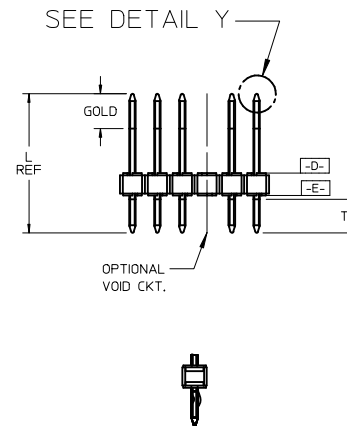
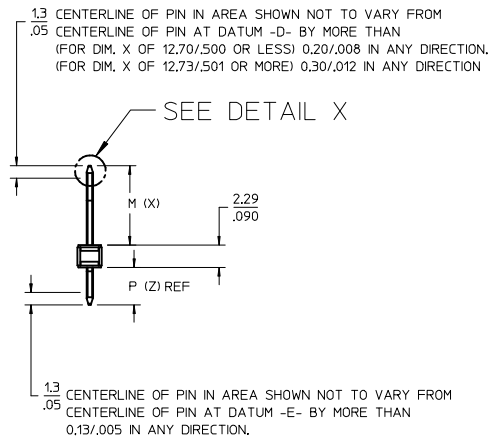
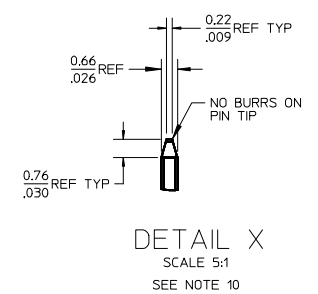
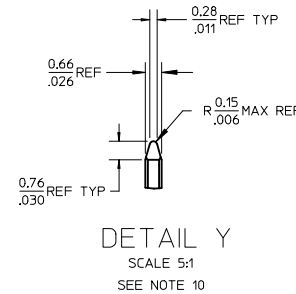
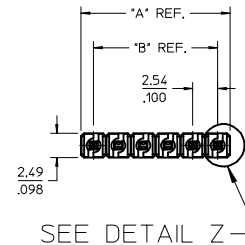
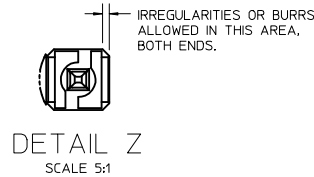
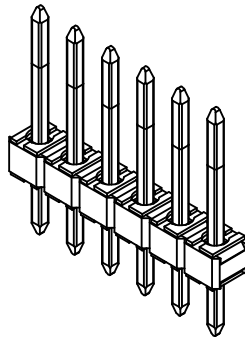
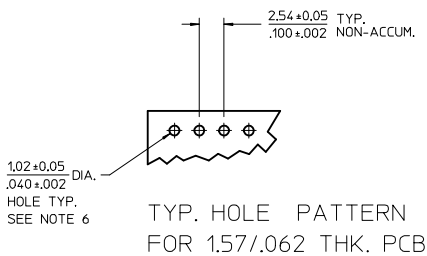


NO. CKTS	DIM. A	DIM. B
2	5.08	2.54
3	7.62	5.08
4	10.16	7.62
5	12.70	10.16
6	15.24	12.70
7	17.78	15.24
8	20.32	17.78
9	22.86	20.32
10	25.40	22.86
11	27.94	25.40
12	30.48	27.94
13	33.02	30.48
14	35.56	33.02
15	38.10	35.56
16	40.64	38.10
17	43.18	40.64
18	45.72	43.18
19	48.26	45.72
20	50.80	48.26
21	53.34	50.80
22	55.88	53.34
23	58.42	55.88
24	60.96	58.42
25	63.50	60.96
26	66.04	63.50
27	68.58	66.04
28	71.12	68.58
29	73.66	71.12
30	76.20	73.66
31	78.74	76.20
32	81.28	78.74
33	83.82	81.28
34	86.36	83.82
35	88.90	86.36
36	91.44	88.90
	3.60	3.50



- NOTES:
- MATERIAL: GLASS FILLED NYLON
UL. 94V-0, COLOR: BLACK
 - FINISH:
(197) OVERALL REFLOWED MATTE TIN: 0.00152/.000060 MIN.
OVER 0.00127/.000050 MIN. NICKEL OVERALL.
(222) OVERALL MATTE TIN: 0.00254/.000100 MIN.
OVER 0.00127/.000050 MIN. NICKEL OVERALL.
 - PRODUCT SPECIFICATION PS 10-07.
 - PACKAGING INFORMATION: SEE TABLES
 - SOLDERABILITY PER SMES-152.
 - KINK PIN OPTION NOT RECOMMENDED FOR 2 CIRCUIT PARTS.
HOLE SIZE MAY NEED TO BE ADJUSTED FOR 2 CIRCUIT PARTS WITH KINK OPTION FOR PROPER INSERTION INTO THE PCB.
SEE SMES-42003 FOR ADDITIONAL INFORMATION ON KINK PIN DIRECTION AND PLACEMENT.
 - HEADERS ARE NOT STACKABLE ON 2.54/.100 CENTERS.
 - PIN PUSH OUT FORCE: 3 LBS. MIN
 - THIS PART CONFORMS TO CLASS B REQUIREMENTS OF COSMETIC SPECIFICATION PS-45499-002.
 - PIN TIP DIMENSIONS ARE SHOWN FOR REFERENCE ONLY.
DIMENSIONS APPLY PRIOR TO PLATING OR ASSEMBLY.
 - PARTS ARE CAPABLE OF 260°C WAVE SOLDER PROCESS.
PARTS ARE CAPABLE OF 260°C REFLOW SOLDER PROCESS.
BUT MAY REQUIRE DRYING PRIOR TO SOLDERING.




ADD 42375-4523 EC NO: UCP2016-1167 DRWN:MKIPPER 2015/09/15 CHKD:JFOX 2016/05/11 APPR:FSMITH 2016/05/13	QUALITY SYMBOLS ▽=0 ▽=0 ▽=0	GENERAL TOLERANCES (UNLESS SPECIFIED)		DIMENSION STYLE	SCALE	DESIGN UNITS	THIRD ANGLE PROJECTION		
				MM/IN	2:1	INCH			
		4 PLACES ± --- ± ---		mm	INCH	DRAWN BY	DATE	TITLE	
		3 PLACES ± --- ± .010				DATE	KK 100 HEADER ASSY FLAT VERTICAL BREAKAWAY		
2 PLACES ± 0.25 ± .015				CHECKED BY	DATE				
1 PLACE ± 0.38 ± ---				BANDERSON	2011/06/28				
0 PLACE ± ±				APPROVED BY	DATE				
				FSMITH	2012/04/25				
		ANGULAR ±1/2° DRAFT WHERE APPLICABLE MUST REMAIN WITHIN DIMENSIONS		MATERIAL NO.	DOCUMENT NO.	SHEET NO.			
A4				SEE CHART	SD-42375-003	1 OF 2			
				SIZE B	THIS DRAWING CONTAINS INFORMATION THAT IS PROPRIETARY TO MOLEX INCORPORATED AND SHOULD NOT BE USED WITHOUT WRITTEN PERMISSION				

10 9 8 7 6 5 4 3 2 1

A-42375-4268/4275	
FINISH:	197
MATING LENGTH: M	10.95/.431
GOLD POINT: G	N/A
PC TAIL LENGTH: P	3.15/.124
TIN: T	OVERALL
CIRCUITS:	2-36
KINKS:	NONE
VOIDED CKTS:	NONE
PACKAGING:	BULK PK-40873-0041
CKTS	MATERIAL NUMBER
02	
03	42375-4268
04	42375-4269
05	
06	
07	
08	
09	
10	42375-4275

A-42375-4380	
FINISH:	197
MATING LENGTH: M	15.24/.600
GOLD POINT: G	N/A
PC TAIL LENGTH: P	3.05/.120
TIN: T	OVERALL
CIRCUITS:	2-36
KINKS:	NONE
VOIDED CKTS:	NONE
PACKAGING:	BULK PK-40873-0041
CKTS	MATERIAL NUMBER
02	
03	
04	
05	
06	
07	
08	
09	
10	42375-4380

A-42375-4523	
FINISH:	222
MATING LENGTH: M	5.26/.207
GOLD POINT: G	N/A
PC TAIL LENGTH: P	4.01/.158
TIN: T	OVERALL
CIRCUITS:	2-36
KINKS:	NONE
VOIDED CKTS:	NONE
PACKAGING:	BULK PK-40873-0041
CKTS	MATERIAL NUMBER
12	42375-4523

SEE SHEET 1 EC NO: UCP2016-1167 DRW:MKIPPER 2015/09/15 CHKD:JFOX 2016/05/11 APPR:FSMITH 2016/05/13	DESCRIPTION REV	QUALITY SYMBOLS	GENERAL TOLERANCES (UNLESS SPECIFIED)	DIMENSION STYLE	SCALE	DESIGN UNITS	THIRD ANGLE PROJECTION
		$\nabla = 0$ $\nabla = 0$ $\nabla = 0$	mm INCH 4 PLACES ± --- ± --- 3 PLACES ± --- ± .010 2 PLACES ± 0.25 ± .015 1 PLACE ± 0.38 ± --- 0 PLACE ± ±	MM/IN	2:1	INCH	KK 100 HEADER ASSY FLAT VERTICAL BREAKAWAY 
		ANGULAR ±1/2° DRAFT WHERE APPLICABLE MUST REMAIN WITHIN DIMENSIONS	DRAWN BY DATE MKIPPER 2011/06/27 CHECKED BY DATE BANDERSON 2011/06/28 APPROVED BY DATE FSMITH 2012/04/25	MATERIAL NO. SEE CHART	DOCUMENT NO. SD-42375-003		
		A4		SIZE B	THIS DRAWING CONTAINS INFORMATION THAT IS PROPRIETARY TO MOLEX INCORPORATED AND SHOULD NOT BE USED WITHOUT WRITTEN PERMISSION	SHEET NO. 2 OF 2	

9 8 7 6 5 4 3 2 1

X-ON Electronics

Largest Supplier of Electrical and Electronic Components

Click to view similar products for [Headers & Wire Housings](#) category:

Click to view products by [MOLEX](#) manufacturer:

Other Similar products are found below :

[892-18-020-10-001101](#) [58102-G61-06LF](#) [582553-1](#) [0009485154](#) [009176003701906](#) [0050291907](#) [LY20-4P-DT1-P1E-BR](#) [02.125.8002.8](#)
[609-3404](#) [61062-3](#) [622-0430](#) [622-3653LF](#) [63453-116](#) [636-1030](#) [636-1427](#) [636-3427](#) [636-4007](#) [641938-9](#) [641991-4](#) [644827-2](#) [65817-010LF](#)
[65817-015LF](#) [65863-015LF](#) [66207-023LF](#) [67095-007LF](#) [67601157](#) [68648-049](#) [70.362.1628.0](#) [70-4210](#) [70-4226B](#) [70-4853B](#) [707-5020](#) [707-5028](#) [71.350.2428.0](#) [71918-208LF](#) [71961-016LF](#) [733-134](#) [733-162](#) [754199-000](#) [760-3052](#) [787-8014-00](#) [79531-3000](#) [FCN-360C032-B](#) [FCN-367T-T012/H](#) [FCN-723D010/2](#) [80.063.4001.1](#) [800-90-001-10-001000](#) [800-90-010-10-002000](#) [801-43-002-10-013000](#) [801-43-006-10-002000](#)