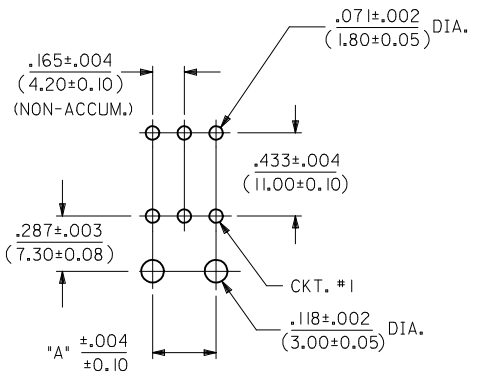
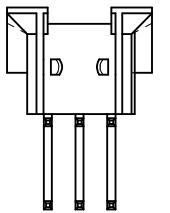
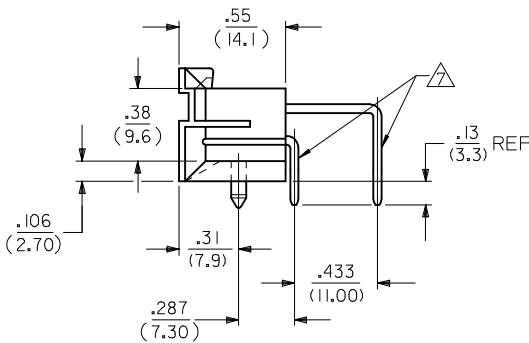
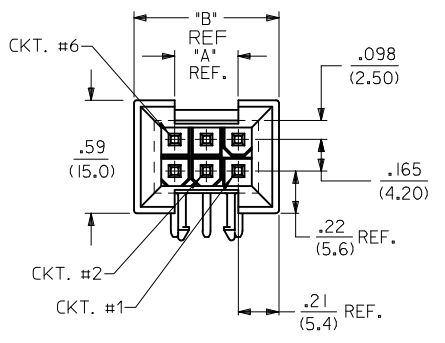


CIRCUIT SIZE	DIM. "A"	DIM. "B"
6	.331 (8.40)	.76 (19.2)

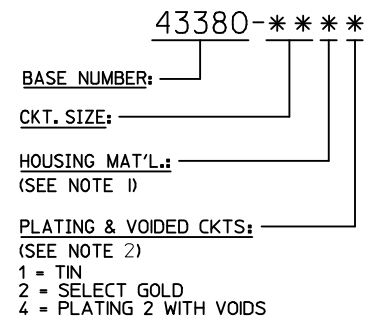
**NOTES:**

- HOUSING MATERIAL: "1" = NYLON UL 94V-2  
COLOR: NATURAL  
"4" = NYLON UL 94V-0  
COLOR: BLACK  
TERMINAL MATERIAL: BRASS ALLOY
- TERMINAL PLATING:  
1 = .000100/(.00254) MIN. MATTE TIN OVER  
.000050/(.00127) MIN. NICKEL.  
2 = .000030/(0.00076) MIN. SELECT GOLD AND  
.000100/(0.00254) MIN. SELECT MATTE TIN  
OVER .000050/(0.00127) MIN. NICKEL OVERALL
- PRODUCT SPECIFICATION: PS-5556-002
- PACKAGING SPECIFICATION: BULK
- THIS PART MATES WITH MINI-FIT JR. RECEPTACLES #5557, #42385, #42474, AND #44516 AND MINI-TWIST RECEPTACLE #43348.
- CONNECTOR ASSEMBLIES ARE NOT TO BE MATED OR UNMATED WHILE CIRCUITS ARE LIVE.
- FORMING MARKS ARE ACCEPTABLE
- DISCOLORATION IN THE BANDOLIER CARRIER AREA OF THE PIN IS INHERENT TO THE PLATING PROCESS AND IS DUE TO THE MASKING EFFECT OF THE CARRIER. THIS DISCOLORATION IS IN A NON-FUNCTIONAL AREA OF THE PIN AND WILL NOT AFFECT THE PERFORMANCE OF THE HEADER ASSEMBLY.
- PART CONFORMS TO CLASS "B" REQUIREMENTS OF COSMETIC SPECIFICATION PS-45499-002.
- PARTS ARE NOT DESIGNED FOR CURRENT SHARING.
- CONNECTORS ARE NOT TO BE MATED AND UNMATED WHILE CIRCUITS ARE LIVE.



RECOMMENDED HOLE LAYOUT FOR  
.070/(1.78) MAX. THICK P.C. BOARD

**LEGEND:**



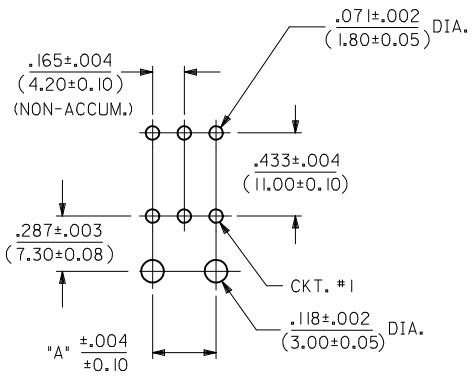
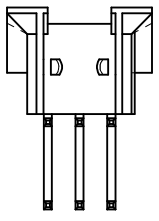
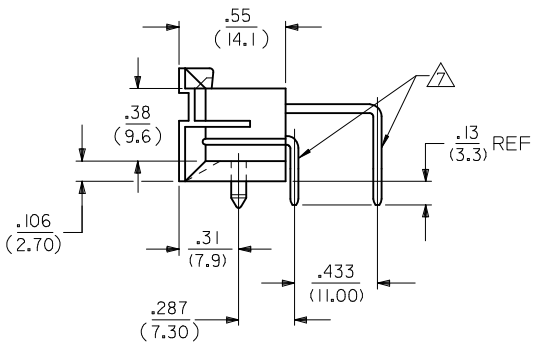
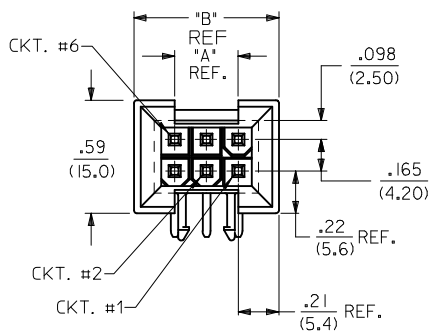
43380-0644	94V-0.BLACK	SELECT GOLD	3 AND 4
43380-0642	94V-0.BLACK	SELECT GOLD	NONE
43380-0612	94V-2	SELECT GOLD	NONE
ITEM NUMBER	HSG. MAT'L.	PLATING	VOIDED CIRCUITS

<b>ADD REF TO 'B' DIM</b> EC NO: UCP2017-0130 DRWN:CSLAFTER 2016/07/15 CHKD:JBELL 2016/07/15 APPR:FSMITH 2016/07/19	QUALITY SYMBOLS ▽=0 ▽=0 ▽=0	GENERAL TOLERANCES (UNLESS SPECIFIED)		DIMENSION STYLE IN/MM		SCALE 2:1	DESIGN UNITS METRIC	THIRD ANGLE PROJECTION	
		4 PLACES ± --- ± ---	DRAWN BY NNGUYEN	DATE 2012/01/20	TITLE MINIFIT B.M.I. RIGHT ANGLE HEADER ASSY.				
		3 PLACES ± --- ± .010	CHECKED BY RJF	DATE	DOCUMENT NO. SDA-43380-****				
		2 PLACES ± .25 ± .015	APPROVED BY FSMITH	DATE 2012/02/02	SHEET NO. 1 OF 1				
1 PLACE ± .38 ± ---	MATERIAL NO. SEE CHART		THIS DRAWING CONTAINS INFORMATION THAT IS PROPRIETARY TO MOLEX INCORPORATED AND SHOULD NOT BE USED WITHOUT WRITTEN PERMISSION						
0 PLACE ± ±	ANGULAR ±1/2°								
DRAFT WHERE APPLICABLE MUST REMAIN WITHIN DIMENSIONS									

CIRCUIT SIZE	DIM. "A"	DIM. "B"
6	.331 (8.40)	.76 (19.2)

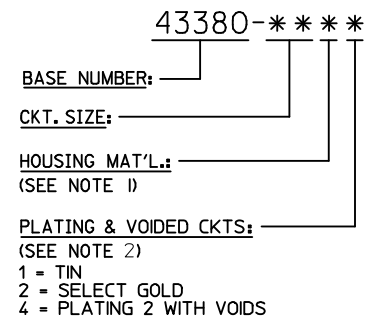
**NOTES:**

- HOUSING MATERIAL: "1" = NYLON UL 94V-2  
COLOR: NATURAL  
"4" = NYLON UL 94V-0  
COLOR: BLACK  
TERMINAL MATERIAL: BRASS ALLOY
- TERMINAL PLATING:  
1 = .000100/(.00254) MIN. MATTE TIN OVER  
.000050/(.00127) MIN. NICKEL.  
2 = .000030/(0.00076) MIN. SELECT GOLD AND  
.000100/(0.00254) MIN. SELECT MATTE TIN  
OVER .000050/(0.00127) MIN. NICKEL OVERALL
- PRODUCT SPECIFICATION: PS-5556-002
- PACKAGING SPECIFICATION: BULK
- THIS PART MATES WITH MINI-FIT JR. RECEPTACLES #5557, #42385, #42474, AND #44516 AND MINI-TWIST RECEPTACLE #43348.
- CONNECTOR ASSEMBLIES ARE NOT TO BE MATED OR UNMATED WHILE CIRCUITS ARE LIVE.
- FORMING MARKS ARE ACCEPTABLE
- DISCOLORATION IN THE BANDOLIER CARRIER AREA OF THE PIN IS INHERENT TO THE PLATING PROCESS AND IS DUE TO THE MASKING EFFECT OF THE CARRIER. THIS DISCOLORATION IS IN A NON-FUNCTIONAL AREA OF THE PIN AND WILL NOT AFFECT THE PERFORMANCE OF THE HEADER ASSEMBLY.
- PART CONFORMS TO CLASS "B" REQUIREMENTS OF COSMETIC SPECIFICATION PS-45499-002.
- PARTS ARE NOT DESIGNED FOR CURRENT SHARING.
- CONNECTORS ARE NOT TO BE MATED AND UNMATED WHILE CIRCUITS ARE LIVE.



RECOMMENDED HOLE LAYOUT FOR  
.070/(1.78) MAX. THICK P.C. BOARD

**LEGEND:**



43380-0644	94V-0.BLACK	SELECT GOLD	3 AND 4
43380-0642	94V-0.BLACK	SELECT GOLD	NONE
43380-0612	94V-2	SELECT GOLD	NONE
ITEM NUMBER	HSG. MAT'L.	PLATING	VOIDED CIRCUITS

<b>ADD REF TO 'B' DIM</b> EC NO: UCP2017-0130 DRWN:CSLAFTER 2016/07/15 CHKD:JBELL 2016/07/15 APPR:FSMITH 2016/07/19 REV: D3	QUALITY SYMBOLS 	GENERAL TOLERANCES (UNLESS SPECIFIED)		DIMENSION STYLE <b>IN/MM</b>		SCALE <b>2:1</b>	DESIGN UNITS <b>METRIC</b>	THIRD ANGLE PROJECTION			
		4 PLACES ± --- ± ---	3 PLACES ± --- ± .010	2 PLACES ± .25 ± .015	1 PLACE ± .38 ± ---	0 PLACE ± ±	DRAWN BY NGUYEN	DATE 2012/01/20	TITLE <b>MINIFIT B.M.I. RIGHT ANGLE HEADER ASSY.</b>		
		ANGULAR ±1/2°					CHECKED BY RJF	DATE 2012/02/02			
		DRAFT WHERE APPLICABLE MUST REMAIN WITHIN DIMENSIONS					APPROVED BY FSMITH	DATE 2012/02/02	MATERIAL NO. <b>SEE CHART</b>	DOCUMENT NO. <b>SDA-43380-****</b>	SHEET NO. <b>1 OF 1</b>

THIS DRAWING CONTAINS INFORMATION THAT IS PROPRIETARY TO MOLEX INCORPORATED AND SHOULD NOT BE USED WITHOUT WRITTEN PERMISSION

## X-ON Electronics

Largest Supplier of Electrical and Electronic Components

*Click to view similar products for [Headers & Wire Housings](#) category:*

*Click to view products by [Molex](#) manufacturer:*

Other Similar products are found below :

[892-18-020-10-001101](#) [58102-G61-06LF](#) [582553-1](#) [0009485154](#) [009176003701906](#) [0050291907](#) [LY20-4P-DT1-P1E-BR](#) [02.125.8002.8](#)  
[609-3404](#) [61062-3](#) [622-0430](#) [622-3653LF](#) [63453-116](#) [636-1030](#) [636-1427](#) [636-3427](#) [636-4007](#) [641938-9](#) [641991-4](#) [644827-2](#) [65817-010LF](#)  
[65817-015LF](#) [65863-015LF](#) [66207-023LF](#) [67095-007LF](#) [67601157](#) [68648-049](#) [70.362.1628.0](#) [70-4210](#) [70-4226B](#) [70-4853B](#) [707-5020](#) [707-5028](#) [71.350.2428.0](#) [71918-208LF](#) [71961-016LF](#) [733-134](#) [733-162](#) [754199-000](#) [760-3052](#) [787-8014-00](#) [79531-3000](#) [FCN-360C032-B](#) [FCN-367T-T012/H](#) [FCN-723D010/2](#) [80.063.4001.1](#) [800-90-001-10-001000](#) [800-90-010-10-002000](#) [801-43-002-10-013000](#) [801-43-006-10-002000](#)