

PLEASE CHECK WWW.MOLEX.COM FOR LATEST PART INFORMATION

Part Number:

0436500822

Status:

Active

Overview:

Micro-Fit Connector System

Description:

Micro-Fit 3.0 Vertical Header, 3.00mm Pitch, Single Row, 8 Circuits, with PCB Press-fit Metal Retention Clip, Gold, Glow-Wire Capable, Black, Tape and Reel

- Documents:
- 3D Model (PDF)

3D Model

Drawing (PDF)

Product Specification 436500001-PS-JA-000 (PDF)

Product Specification 436500001-PS-KO-000 (PDF)

Product Specification 436500001-PS-SP-000 (PDF)

Product Specification PS-43650-001 (PDF)

Packaging Specification 436500002-PK-000 (PDF)

Packaging Specification 708730000-PK-000 (PDF)

Test Summary 430450006-TS-000 (PDF)

Test Summary TS-43045-001-001 (PDF)

Test Summary TS-43045-002-001 (PDF)

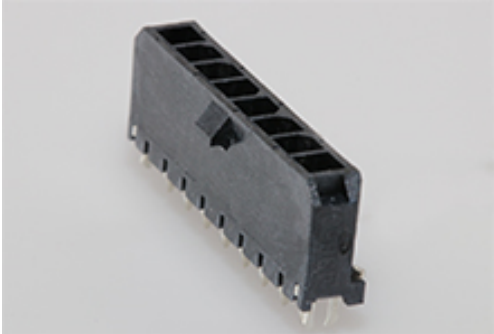
Test Summary TS-46235-001-001 (PDF)

Datasheet (PDF)

Symbol Footprint Data SYM-43650-0821-001 (PDF)

RoHS Certificate of Compliance (PDF)

Agency Certification	
CSA	LR19980
UL	E29179
General	
Product Family	PCB Headers
Series	43650
Application	Power, Wire-to-Board
Comments	High Temperature Square Pin<P><P>This Molex product is manufactured from material that has the following ratings, tested by independent agencies:. a) A Glow Wire Ignition Temperature (GWIT) of at least 775 deg C per IEC 60695-2-13.. b) A Glow Wire Flammability Index (GWFI) above 850 deg C per IEC 60695-2-12.and hence complies with the requirements set out in the International Standard IEC 60335-1 5th edition - household and similar electrical appliances - safety, section 30 Resistance to heat and fire. <P><P> The customers using this product must determine its suitability for use in their particular application through testing or other acceptable means as described in end-product glow-wire flammability test standard IEC 60695-2-11 and any applicable product end-use standard(s). <P> If it is determined during the customer's evaluation of suitability, that higher performance is required, please contact Molex for possible product options. High Temperature
Overview	Micro-Fit Connector System
Product Name	Micro-Fit 3.0
UPC	800754831550
Physical	
Breakaway	No
Circuits (Loaded)	8
Circuits (maximum)	8
Color - Resin	Black
Durability (mating cycles max)	30
Flammability	94V-0
Glow-Wire Capable	Yes
Mated Height	17.27mm
Material - Metal	Brass



Series image - Reference only

EU ELV

Not Relevant

EU RoHS

Compliant

REACH SVHC

Not Contained Per - D(2021)4569-DC (8 July 2021)

Halogen-Free

Status

Low-Halogen

For more information, please visit [Contact US](#)

China RoHS

Green Image

ELV

Not Relevant

RoHS Phthalates

Not Contained

Search Parts in this Series

43650 Series

- Mates With
- Micro-Fit 3.0 Receptacle Housing 43645
- Micro-Fit 3.0 TPA Receptacle Housing 171850
- Micro-Fit 3.0 Cable Assembly 2147502081 , 2147502082 , 2147502083 , 2147512081 , 2147512082 , 2147512083

Material - Plating Mating	Gold
Material - Plating Termination	Tin
Material - Resin	High Temperature Thermoplastic
Net Weight	1.500/g
Number of Rows	1
Orientation	Vertical
PCB Locator	Yes
PCB Retention	Yes
PCB Thickness - Recommended	1.60mm
Packaging Type	Embossed Tape on Reel
Pitch - Mating Interface	3.00mm
Plating min - Mating	0.381µm
Plating min - Termination	2.540µm
Polarized to PCB	Yes
Shrouded	Fully
Stackable	No
Temperature Range - Operating	-40° to +125°C
Termination Interface: Style	Surface Mount
<b>Electrical</b>	
Current - Maximum per Contact	8.5A
Voltage - Maximum	600V
<b>Solder Process Data</b>	
Duration at Max. Process Temperature (seconds)	030
Lead-freeProcess Capability	REFLOW
Max. Cycles at Max. Process Temperature	003
Process Temperature max. C	260
<b>Material Info</b>	
<b>Reference - Drawing Numbers</b>	
Packaging Specification	436500002-PK-000, 708730000-PK-000
Product Specification	436500001-PS-JA-000, 436500001-PS-KO-000, 436500001-PS-SP-000, PS-43650-001
Sales Drawing	SD-43650-008-001
Symbol/Footprint Data	SYM-43650-0821-001
Test Summary	430450006-TS-000, TS-43045-001-001, TS-43045-002-001, TS-46235-001-001

This document was generated on 01/03/2022

PLEASE CHECK [WWW.MOLEX.COM](http://WWW.MOLEX.COM) FOR LATEST PART INFORMATION

## X-ON Electronics

Largest Supplier of Electrical and Electronic Components

*Click to view similar products for [Headers & Wire Housings](#) category:*

*Click to view products by [Molex](#) manufacturer:*

Other Similar products are found below :

[892-18-020-10-001101](#) [58102-G61-06LF](#) [582553-1](#) [0009485154](#) [009176003701906](#) [0050291907](#) [LY20-4P-DT1-P1E-BR](#) [02.125.8002.8](#)  
[609-3404](#) [61062-3](#) [622-0430](#) [622-3653LF](#) [63453-116](#) [636-1030](#) [636-1427](#) [636-3427](#) [636-4007](#) [641938-9](#) [641991-4](#) [644827-2](#) [65817-010LF](#)  
[65817-015LF](#) [65863-015LF](#) [66207-023LF](#) [67095-007LF](#) [67601157](#) [68648-049](#) [70.362.1628.0](#) [70-4210](#) [70-4226B](#) [70-4853B](#) [707-5020](#) [707-](#)  
[5028](#) [71.350.2428.0](#) [71918-208LF](#) [71961-016LF](#) [733-134](#) [733-162](#) [754199-000](#) [760-3052](#) [787-8014-00](#) [79531-3000](#) [FCN-360C032-B](#) [FCN-](#)  
[367T-T012/H](#) [FCN-723D010/2](#) [80.063.4001.1](#) [800-90-001-10-001000](#) [800-90-010-10-002000](#) [801-43-002-10-013000](#) [801-43-006-10-002000](#)