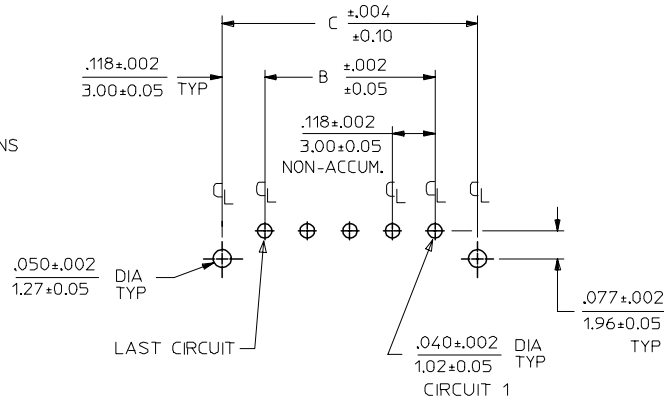
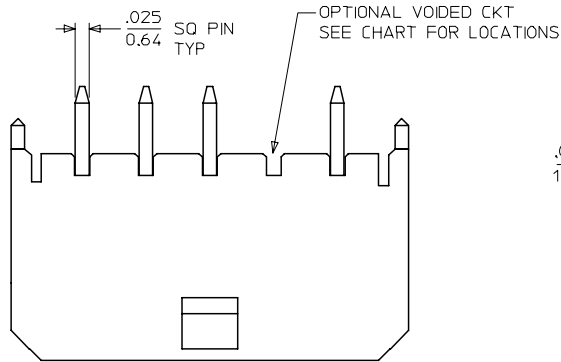
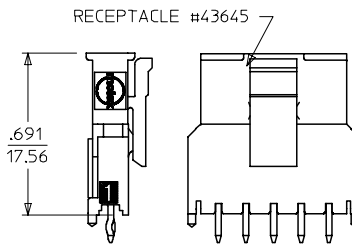
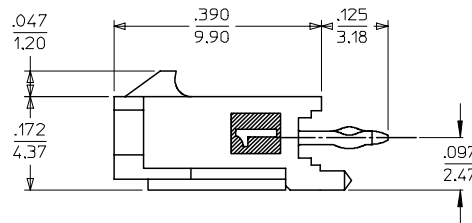
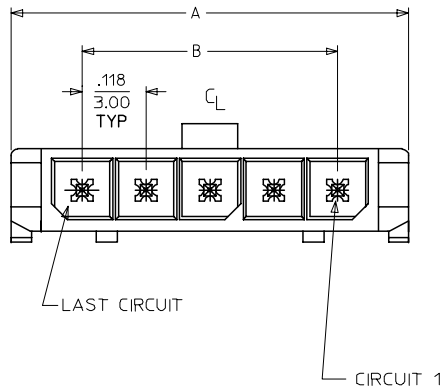
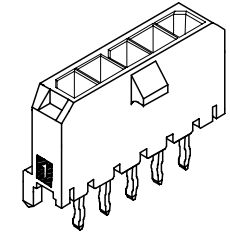


13 12 11 10 9 8 7 6 5 4 3 2 1



PCB LAYOUT: COMPONENT SIDE  
RECOMMENDED PCB THICKNESS: .062/1.57

CKTS	A	B	C
02	$\frac{.380}{9.65}$	$\frac{.118}{3.00}$	$\frac{.354}{9.00}$
03	$\frac{.498}{12.65}$	$\frac{.236}{6.00}$	$\frac{.472}{12.00}$
04	$\frac{.616}{15.65}$	$\frac{.354}{9.00}$	$\frac{.591}{15.00}$
06	$\frac{.852}{21.64}$	$\frac{.591}{15.00}$	$\frac{.827}{21.00}$
08	$\frac{1.088}{27.64}$	$\frac{.827}{21.00}$	$\frac{1.063}{27.00}$
10	$\frac{1.325}{33.66}$	$\frac{1.063}{27.00}$	$\frac{1.299}{33.00}$
12	$\frac{1.561}{39.65}$	$\frac{1.299}{33.00}$	$\frac{1.535}{39.00}$



MATED MICRO FIT CONNECTORS

NOTES:

- HOUSING MATERIAL: LIQUID CRYSTAL POLYMER, GLASS FILLED, UL94V-0, COLOR: BLACK  
TERMINAL MATERIAL: BRASS ALLOY
- FINISH:  
A = .000100/(0.00254) MIN. BRIGHT TIN OVER  
.000050/(0.00127) MIN. NICKEL  
B = .000030/(0.00076) MIN. SELECT GOLD IN CONTACT AREA  
.000100/(0.00254) MIN. SELECT MATTE TIN ON SOLDER TAILS  
BOTH OVER .000050/(0.00127) NICKEL OVERALL
- PRODUCT SPECIFICATION: PS-43650
- TRAY PACKAGED : SEE MOLEX DRAWING PK-70873-0811
- MATES WITH MICRO FIT (3.0) RECEPTACLE SERIES 43645
- THE PRIMARY SHIPPING CARTON WILL BE LABELED, 'COMPLIANT TO RoHS DIRECTIVE 2002/95/EC AND ELV ANNEX II OF DIRECTIVE 2000/53/EC.' ASSEMBLIES WILL BE COMPLIANT TO THE RoHS AND ELV (LEAD-FREE) DIRECTIVES.
- A HIGHER TEMPERATURE GRADE MATERIAL (260C MAX. REFLOW TEMPERATURE) IS BEING PHASED-IN BEGINNING AUGUST 2007. PARTS WILL BE TEMPORARILY IDENTIFIED WITH A BLUE DOT ON THE PRIMARY SHIPPING CARTON LABEL UNTIL ALL CIRCUIT SIZES ARE CONVERTED. AT WHICH TIME A FULL-CONVERSION DATE WILL BE IDENTIFIED IN PS-43650.

	FINISH A	FINISH B
CKTS	MATERIAL NO:	CKTS MATERIAL NO:
02	43650-5215	02 43650-5217
		03 43650-5317
04	43650-5415	04 43650-5417
		06 43650-5617
10	43650-6015	08 43650-5817
		12 43650-6217

691 DIM. ADD NOTE 7 EC NO: UCP2008-0037 DRAWN:KIPER 2007/09/06 CHKD:SSOUSEK 2007/09/11 APPR:FSM TH 2007/09/12 REV DESCRIPTION	QUALITY SYMBOLS $\nabla=0$ $\nabla=0$	GENERAL TOLERANCES (UNLESS SPECIFIED) <table border="1"> <tr> <th></th> <th>mm</th> <th>INCH</th> </tr> <tr> <td>4 PLACES</td> <td><math>\pm .010</math></td> <td><math>\pm .0004</math></td> </tr> <tr> <td>3 PLACES</td> <td><math>\pm .015</math></td> <td><math>\pm .0006</math></td> </tr> <tr> <td>2 PLACES</td> <td><math>\pm 0.25</math></td> <td><math>\pm .010</math></td> </tr> <tr> <td>1 PLACE</td> <td><math>\pm 0.36</math></td> <td><math>\pm .014</math></td> </tr> </table>		mm	INCH	4 PLACES	$\pm .010$	$\pm .0004$	3 PLACES	$\pm .015$	$\pm .0006$	2 PLACES	$\pm 0.25$	$\pm .010$	1 PLACE	$\pm 0.36$	$\pm .014$	DIMENSION STYLE IN/MM	SCALE NONE DESIGN UNITS METRIC	THIRD ANGLE PROJECTION
		mm	INCH																	
	4 PLACES	$\pm .010$	$\pm .0004$																	
	3 PLACES	$\pm .015$	$\pm .0006$																	
2 PLACES	$\pm 0.25$	$\pm .010$																		
1 PLACE	$\pm 0.36$	$\pm .014$																		
		DRAWN BY RHLTS CHECKED BY SCHMIDT APPROVED BY FSMITH MATERIAL NO.	DATE 2004/07/22 DATE 2004/07/22 DATE 2004/07/22	TITLE MICRO-FIT (3.0), SINGLE ROW/VERTICAL THRU HOLE PEGS/TRAY, LEAD-FREE	SHEET NO. 1 OF 1															
	DRAFT WHERE APPLICABLE MUST REMAIN WITHIN DIMENSIONS	SEE CHART	MOLEX INCORPORATED DOCUMENT NO. SD-43650-014																	
		THIS DRAWING CONTAINS INFORMATION THAT IS PROPRIETARY TO MOLEX INCORPORATED AND SHOULD NOT BE USED WITHOUT WRITTEN PERMISSION																		

12 11 10 9 8 7 6 5 4 3 2 1

## X-ON Electronics

Largest Supplier of Electrical and Electronic Components

*Click to view similar products for [Headers & Wire Housings](#) category:*

*Click to view products by [Molex](#) manufacturer:*

Other Similar products are found below :

[892-18-020-10-001101](#) [58102-G61-06LF](#) [582553-1](#) [0009485154](#) [009176003701906](#) [0050291907](#) [LY20-4P-DT1-P1E-BR](#) [02.125.8002.8](#)  
[609-3404](#) [61062-3](#) [61082-181009](#) [622-3653LF](#) [63453-116](#) [636-1030](#) [636-1427](#) [636-3427](#) [636-4007](#) [641938-9](#) [641991-4](#) [644827-2](#) [65817-](#)  
[010LF](#) [65817-015LF](#) [65863-015LF](#) [66207-023LF](#) [67095-007LF](#) [67601157](#) [68648-049](#) [70.362.1628.0](#) [70-4210](#) [70-4226B](#) [70-4853B](#) [707-](#)  
[5020](#) [707-5028](#) [71.350.2428.0](#) [71918-208LF](#) [71961-016LF](#) [733-134](#) [733-162](#) [754199-000](#) [760-3052](#) [787-8014-00](#) [79531-3000](#) [FCN-](#)  
[360C032-B](#) [FCN-367T-T012/H](#) [FCN-723D010/2](#) [80.063.4001.1](#) [800-90-001-10-001000](#) [800-90-010-10-002000](#) [801-43-002-10-013000](#)  
[801-43-006-10-002000](#)