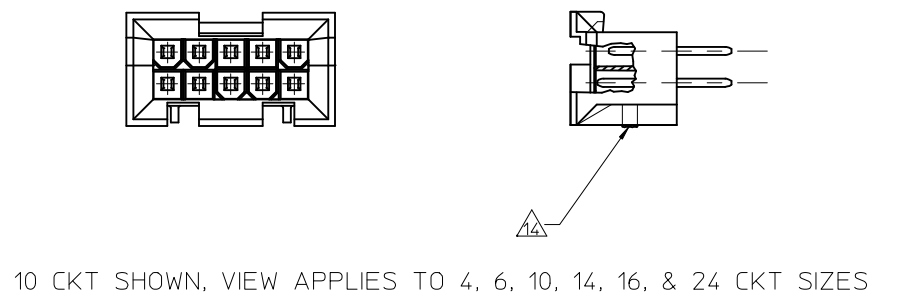
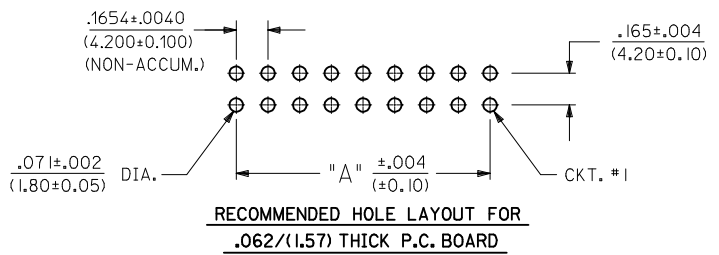


18 CKT PART SHOWN

- NOTES:**
- HOUSING MATERIAL: A = NYLON 6/6. U.L. 94V-2. COLOR: NATURAL.  
B = NYLON 6/6. U.L. 94V-0. COLOR: NATURAL.  
C = PBT POLYESTER 94V-0 COLOR: BLACK
  - TERMINAL MATERIAL: BRASS ALLOY
  - TERMINAL PLATING  
A = .000100/(.00254) MIN. MATTE TIN OVER  
.000050/(.00127) MIN. NICKEL.  
C = .000030/(0.00076) MIN. SELECT GOLD AND  
.000100/(0.00254) MIN. SELECT MATTE TIN  
OVER .000050/(0.00127) MIN. NICKEL OVERALL  
D = .000060/(0.00152) MIN REFLOWED MATTE TIN OVER  
.000050/(0.00127) MIN. NICKEL OVERALL.
  - PRODUCT SPECIFICATION: PS-5556-002
  - PACKAGING IN TRAYS PER PK-42404-002 EXCEPT 43693-0024 PACKAGED BULK
  - PART MATES WITH MINI-FIT JR. RECEPTACLES 5557, 42385, 42474 AND 44516.
  - PART ALLOWS FOR UP TO .100(2.54) MISALIGNMENT WITH MATING RECEPTACLE IN ANY DIRECTION. SEE MATING CONNECTOR DRAWINGS FOR SPECIFIC ALLOWANCE.
  - PARTS ARE NOT DESIGNED FOR CURRENT SHARING.
  - CONNECTORS ASSEMBLIES ARE NOT TO BE MATED OR UNMATED WHILE CIRCUITS ARE LIVE.
  - SEE CHART ON SHEET 2 FOR STANDARD, MAKE-FIRST/BREAK-LAST AND PLATING LOCATIONS.
  - ITEM NUMBERS PRECEDED BY AN "X" IN THE CHART ARE NOT AVAILABLE.
  - REFERENCE DIMENSION "C" NOT TO EXCEED .283(7.20) NOMINAL.
  - DISCOLORATION IN THE BANDOLIER CARRIER AREA OF THE PIN IS INHERENT TO THE PLATING PROCESS AND IS DUE TO THE MASKING EFFECT OF THE CARRIER. THIS DISCOLORATION IS IN A NON-FUNCTIONAL AREA OF THE PIN AND WILL NOT AFFECT THE PERFORMANCE OF THE HEADER ASSEMBLY.
  - PART CONFORMS TO CLASS "B" REQUIREMENTS OF COSMETIC SPECIFICATION PS-45499-002, EXCEPT CLASS "C" ON BOTH SIDE RIBS.
  - CUT OFF PEGS NOT TO PROTRUDE MORE THAN .030(0.76) ON ALL CIRCUIT SIZES EXCEPT 18 CIRCUIT PARTS WILL NOT HAVE CUT OFF PEGS.

|           |                  |                  |
|-----------|------------------|------------------|
| 36        | 2.811<br>(71.40) | 3.236<br>(82.20) |
| 24        | 1.819<br>(46.20) | 2.244<br>(57.00) |
| 22        | 1.654<br>(42.00) | 2.079<br>(52.80) |
| 20        | 1.488<br>(37.80) | 1.913<br>(48.60) |
| 18        | 1.323<br>(33.60) | 1.748<br>(44.40) |
| 16        | 1.157<br>(29.40) | 1.583<br>(40.20) |
| 14        | .992<br>(25.20)  | 1.417<br>(36.00) |
| 12        | .827<br>(21.00)  | 1.252<br>(31.80) |
| 10        | .661<br>(16.80)  | 1.087<br>(27.60) |
| 8         | .496<br>(12.60)  | .921<br>(23.40)  |
| 6         | .331<br>(8.40)   | .756<br>(19.20)  |
| 4         | .165<br>(4.20)   | .590<br>(15.00)  |
| 2         | —                | .425<br>(10.80)  |
| CKT. SIZE | DIM. "A"         | DIM. "B"         |



|  |  |                    |                                      |
|--|--|--------------------|--------------------------------------|
| UPDATE NOTE 14<br>EC NO: UCP2015-4258<br>DRWN: JONT<br>CHKD: JBELL<br>APPR: FSMITH | 2015/06/25<br>2015/06/25<br>2015/07/10 | DESCRIPTION<br>REV | QUALITY SYMBOLS<br>▽=0<br>▽=0<br>▽=0 |
|--|--|--------------------|--------------------------------------|

|   |                          |                                |                 |                        |  |
|---|--------------------------|--------------------------------|-----------------|------------------------|--|
| GENERAL TOLERANCES (UNLESS SPECIFIED)   | DIMENSION STYLE<br>IN/MM |                                | SCALE<br>2:1    | DESIGN UNITS<br>METRIC | THIRD ANGLE PROJECTION   |
|   | mm                       | INCH                           | DRAWN BY<br>GEP | DATE<br>3/11/96        | TITLE<br>VERT. HEADER ASSY WITH<br>MAKE-FIRST/BREAK-LAST<br>MINI-FIT B.M.I. SERIES |
| 4 PLACES ± ---  | ± ---                    | CHECKED BY<br>RFJ              | DATE<br>3/11/96 | APPROVED BY<br>RFJ     | DATE<br>3/11/96  |
| 3 PLACES ± ---  | ± .015                   | MATERIAL NO.<br>SEE CHART      |                 |                        |  |
| 2 PLACES ± 0.38   | ± ---                    | DOCUMENT NO.<br>SDA-43693-**** |                 |                        |  |
| 1 PLACE ± ---   | ± ---                    | SHEET NO.<br>1 OF 2            |                 |                        |  |
| DRAFT WHERE APPLICABLE MUST REMAIN WITHIN DIMENSIONS  |                          |                                |                 |                        |  |
| THIS DRAWING CONTAINS INFORMATION THAT IS PROPRIETARY TO MOLEX INCORPORATED AND SHOULD NOT BE USED WITHOUT WRITTEN PERMISSION |                          |                                |                 |                        |  |

| ITEM NO.   | CHARACTERISTIC DESCRIPTION | CKT. SIZE | TERMINAL VERSION REQUIRED AT EACH CIRCUIT LOCATION: *S* = STD. LENGTH *M* = MAKE-FIRST/BREAK-LAST *V* = VOIDED CIRCUIT |    |    |    |    |    |    |    |    |    |    |    |    |    |    |    | DIM "C" REF. |    |    |    |    |    |    |    |    |    |    |    |    |    |    |    |    |                 |                 |                 |
|------------|----------------------------|-----------|--|----|----|----|----|----|----|----|----|----|----|----|----|----|----|----|--------------|----|----|----|----|----|----|----|----|----|----|----|----|----|----|----|----|-----------------|-----------------|-----------------|
|            |                            |           | 1  | 2  | 3  | 4  | 5  | 6  | 7  | 8  | 9  | 10 | 11 | 12 | 13 | 14 | 15 | 16 |              | 17 | 18 | 19 | 20 | 21 | 22 | 23 | 24 | 25 | 26 | 27 | 28 | 29 | 30 | 31 | 32 | 33              | 34              | 35              |
| 43693-0001 | IOAC                       | 10        | CS   | CS | CM | CS | CS | CS | CS | CM | CS | CS | -  | -  | -  | -  | -  | -  | -            | -  | -  | -  | -  | -  | -  | -  | -  | -  | -  | -  | -  | -  | -  | -  | -  | -               | -.283<br>(7.20) |                 |
| 43693-0002 | 24BA                       | 24        | AM   | AM | AM | AM | AM | AM | AM | AM | AM | AM | AM | AM | AM | AM | AM | AM | AS           | AM | AM | AM | AM | AM | AM | -  | -  | -  | -  | -  | -  | -  | -  | -  | -  | -               | -.154<br>(3.91) |                 |
| 43693-0005 | I6BA                       | 16        | AS   | AS | AS | AS | AS | AS | AS | AS | AS | AS | AS | AS | AS | AS | AS | -  | -            | -  | -  | -  | -  | -  | -  | -  | -  | -  | -  | -  | -  | -  | -  | -  | -  | -.150<br>(3.81) |                 |                 |
| 43693-0020 | I8BA                       | 18        | AS   | AS | AS | AS | AS | AS | AS | AS | AS | AS | AS | AS | AS | AS | AS | AS | AS           | -  | -  | -  | -  | -  | -  | -  | -  | -  | -  | -  | -  | -  | -  | -  | -  | -.209<br>(5.31) |                 |                 |
| 43693-0022 | IOBA                       | 10        | AS   | AM | AM | AM | AM | AM | AM | AM | AM | AM | -  | -  | -  | -  | -  | -  | -            | -  | -  | -  | -  | -  | -  | -  | -  | -  | -  | -  | -  | -  | -  | -  | -  | -.321<br>(8.15) |                 |                 |
| 43693-0024 | 10BC                       | 10        | CS   | CS | CM | CS | CS | CM | CM | CM | CS | CS | -  | -  | -  | -  | -  | -  | -            | -  | -  | -  | -  | -  | -  | -  | -  | -  | -  | -  | -  | -  | -  | -  | -  | -.258<br>(6.55) |                 |                 |
| 43693-0027 | I8BA                       | 18        | AS   | AM | AM | AM | AM | AM | AM | AM | AM | AM | AM | AM | AM | AM | AM | AM | AM           | -  | -  | -  | -  | -  | -  | -  | -  | -  | -  | -  | -  | -  | -  | -  | -  | -               | -.283<br>(7.20) |                 |
| 43693-0030 | I8BA                       | 18        | AS   | AS | AS | AS | AS | AS | AS | AS | AS | AS | AS | AS | AS | AS | AS | AS | AS           | -  | -  | -  | -  | -  | -  | -  | -  | -  | -  | -  | -  | -  | -  | -  | -  | -               | -.154<br>(3.91) |                 |
| 43693-0031 | I8BA                       | 18        | AM   | AM | AM | AM | AM | AM | AM | AM | AM | AM | AM | AM | AM | AM | AM | AM | AM           | -  | -  | -  | -  | -  | -  | -  | -  | -  | -  | -  | -  | -  | -  | -  | -  | -               | -               | -.154<br>(3.91) |
| 43693-0037 | 18BD                       | 18        | DS   | DM | DM | DM | DM | DM | DM | DM | DM | DM | DM | DM | DM | DM | DM | DM | DM           | -  | -  | -  | -  | -  | -  | -  | -  | -  | -  | -  | -  | -  | -  | -  | -  | -               | -.258<br>(6.55) |                 |

X = NOT AVAILABLE SEE NOTE 10

|   |  |  |  |  |  |  |  |  |  |  |  |  |  |  |  |  |  |  |  |  |  |  |  |  |  |  |  |  |  |  |  |  |  |  |  |
|---|--|--|--|--|--|--|--|--|--|--|--|--|--|--|--|--|--|--|--|--|--|--|--|--|--|--|--|--|--|--|--|--|--|--|--|
| H |  |  |  |  |  |  |  |  |  |  |  |  |  |  |  |  |  |  |  |  |  |  |  |  |  |  |  |  |  |  |  |  |  |  |  |
| G |  |  |  |  |  |  |  |  |  |  |  |  |  |  |  |  |  |  |  |  |  |  |  |  |  |  |  |  |  |  |  |  |  |  |  |
| F |  |  |  |  |  |  |  |  |  |  |  |  |  |  |  |  |  |  |  |  |  |  |  |  |  |  |  |  |  |  |  |  |  |  |  |
| E |  |  |  |  |  |  |  |  |  |  |  |  |  |  |  |  |  |  |  |  |  |  |  |  |  |  |  |  |  |  |  |  |  |  |  |
| D |  |  |  |  |  |  |  |  |  |  |  |  |  |  |  |  |  |  |  |  |  |  |  |  |  |  |  |  |  |  |  |  |  |  |  |
| C |  |  |  |  |  |  |  |  |  |  |  |  |  |  |  |  |  |  |  |  |  |  |  |  |  |  |  |  |  |  |  |  |  |  |  |
| B |  |  |  |  |  |  |  |  |  |  |  |  |  |  |  |  |  |  |  |  |  |  |  |  |  |  |  |  |  |  |  |  |  |  |  |
| A |  |  |  |  |  |  |  |  |  |  |  |  |  |  |  |  |  |  |  |  |  |  |  |  |  |  |  |  |  |  |  |  |  |  |  |

**CHARACTERISTICS LEGEND:**



HOUSING MAT'L. (SEE NOTE 1)

- \*A\* = NYLON 6/6, U.L. 94V-2, COLOR: NATURAL
- \*B\* = NYLON 6/6, U.L. 94V-0, COLOR: NATURAL
- \*C\* = PBT POLYESTER 94V-0, COLOR: BLACK

**TERMINAL PLATING (SEE NOTE 2)**

- A = MATTE TIN
- C = SELECT GOLD
- D = REFLOW MATTE TIN

**SEE SHEET 1**  
 EC NO: UCP2015-4258  
 DRWN: MONT 2015/06/25  
 CHKD: JBEL 2015/06/25  
 APPR: FSMITH 2015/07/10

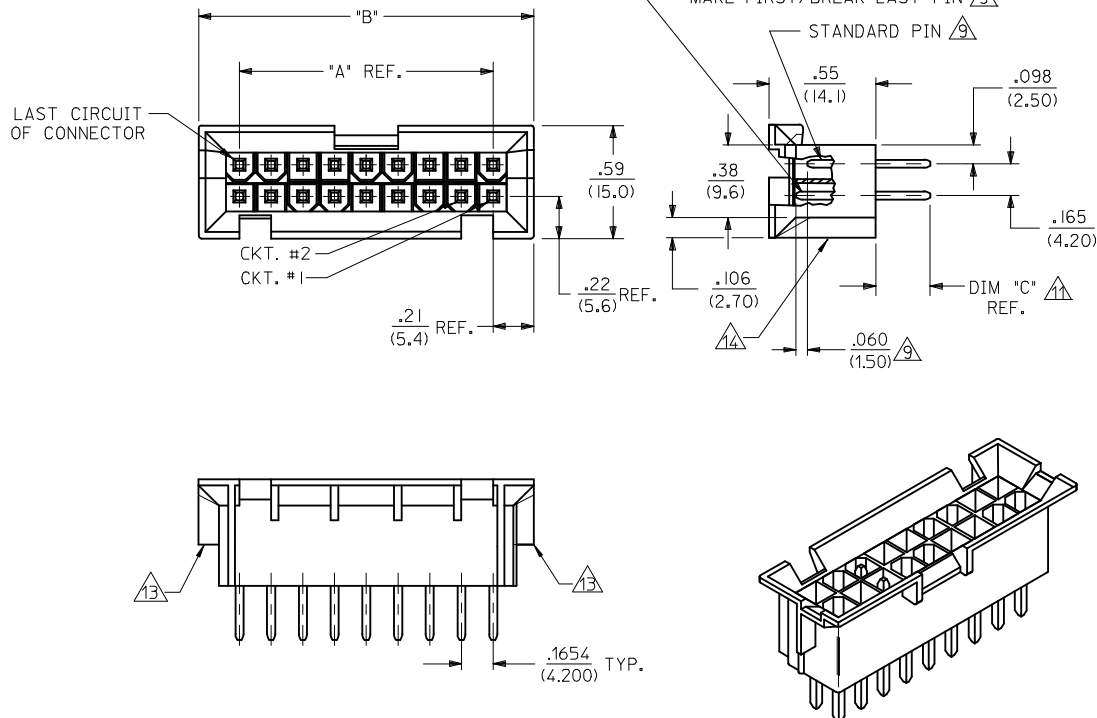
|     |             |
|-----|-------------|
| REV | DESCRIPTION |
| D2  |             |

QUALITY SYMBOLS:  
 = 0  
 = 0  
 = 0

|   |                |                          |      |                    |                        |                        |
|---|----------------|--------------------------|------|--------------------|------------------------|------------------------|
| GENERAL TOLERANCES (UNLESS SPECIFIED)   |                | DIMENSION STYLE<br>IN/MM |      | SCALE              | DESIGN UNITS<br>METRIC | THIRD ANGLE PROJECTION |
| 4 PLACES  | ± --- ± ---    | mm                       | INCH | DRAWN BY<br>GEP    | DATE<br>3/11/96        |                        |
| 3 PLACES  | ± --- ± .015   |                          |      | CHECKED BY<br>RFJ  | DATE<br>3/11/96        |                        |
| 2 PLACES  | ± 0.38 ± ---   |                          |      | APPROVED BY<br>RFJ | DATE<br>3/11/96        |                        |
| 1 PLACE   | ± --- ± ---    |                          |      |                    |                        |                        |
|   | ANGULAR ± 1/2° |                          |      | MATERIAL NO.       | DOCUMENT NO.           | SHEET NO.              |
| DRAFT WHERE APPLICABLE MUST REMAIN WITHIN DIMENSIONS  |                | <b>SEE CHART</b>         |      | SDA-43693-****     |                        | 2 OF 2                 |
| THIS DRAWING CONTAINS INFORMATION THAT IS PROPRIETARY TO MOLEX INCORPORATED AND SHOULD NOT BE USED WITHOUT WRITTEN PERMISSION |                |                          |      |                    |                        |                        |

VERT. HEADER ASSY WITH MAKE-FIRST/BREAK-LAST MINI-FIT B.M.I. SERIES

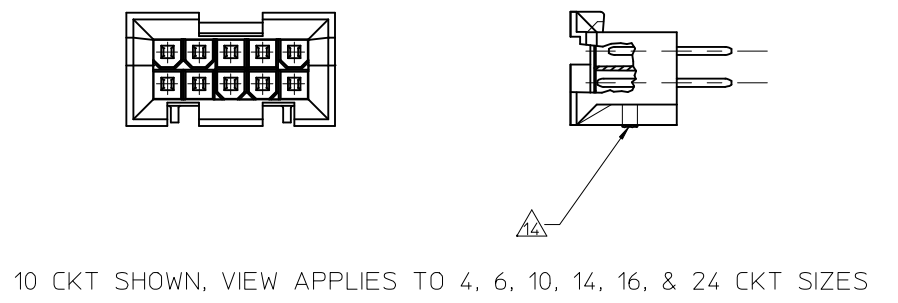
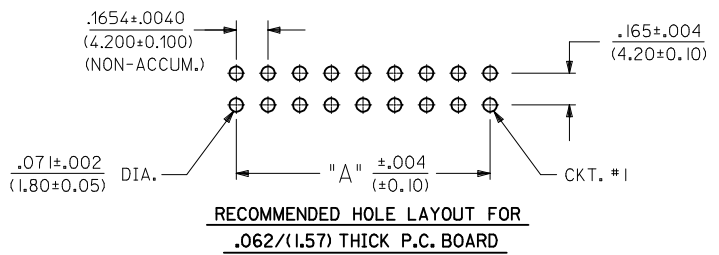
**molex** MOLEX INCORPORATED



18 CKT PART SHOWN

- NOTES:**
- HOUSING MATERIAL: A = NYLON 6/6. U.L. 94V-2. COLOR: NATURAL.  
B = NYLON 6/6. U.L. 94V-0. COLOR: NATURAL.  
C = PBT POLYESTER 94V-0 COLOR: BLACK
  - TERMINAL MATERIAL: BRASS ALLOY
  - TERMINAL PLATING  
A = .000100/(.00254) MIN. MATTE TIN OVER  
.000050/(.00127) MIN. NICKEL.  
C = .000030/(0.00076) MIN. SELECT GOLD AND  
.000100/(0.00254) MIN. SELECT MATTE TIN  
OVER .000050/(0.00127) MIN. NICKEL OVERALL  
D = .000060/(0.00152) MIN REFLOWED MATTE TIN OVER  
.000050/(0.00127) MIN. NICKEL OVERALL.
  - PRODUCT SPECIFICATION: PS-5556-002
  - PACKAGING IN TRAYS PER PK-42404-002 EXCEPT 43693-0024 PACKAGED BULK
  - PART MATES WITH MINI-FIT JR. RECEPTACLES 5557, 42385, 42474 AND 44516.
  - PART ALLOWS FOR UP TO .100(2.54) MISALIGNMENT WITH MATING RECEPTACLE IN ANY DIRECTION. SEE MATING CONNECTOR DRAWINGS FOR SPECIFIC ALLOWANCE.
  - PARTS ARE NOT DESIGNED FOR CURRENT SHARING.
  - CONNECTORS ASSEMBLIES ARE NOT TO BE MATED OR UNMATED WHILE CIRCUITS ARE LIVE.
  - SEE CHART ON SHEET 2 FOR STANDARD, MAKE-FIRST/BREAK-LAST AND PLATING LOCATIONS.
  - ITEM NUMBERS PRECEDED BY AN "X" IN THE CHART ARE NOT AVAILABLE.
  - REFERENCE DIMENSION "C" NOT TO EXCEED .283(7.20) NOMINAL.
  - DISCOLORATION IN THE BANDOLIER CARRIER AREA OF THE PIN IS INHERENT TO THE PLATING PROCESS AND IS DUE TO THE MASKING EFFECT OF THE CARRIER. THIS DISCOLORATION IS IN A NON-FUNCTIONAL AREA OF THE PIN AND WILL NOT AFFECT THE PERFORMANCE OF THE HEADER ASSEMBLY.
  - PART CONFORMS TO CLASS "B" REQUIREMENTS OF COSMETIC SPECIFICATION PS-45499-002, EXCEPT CLASS "C" ON BOTH SIDE RIBS.
  - CUT OFF PEGS NOT TO PROTRUDE MORE THAN .030(0.76) ON ALL CIRCUIT SIZES EXCEPT 18 CIRCUIT PARTS WILL NOT HAVE CUT OFF PEGS.

|           |                  |                  |
|-----------|------------------|------------------|
| 36        | 2.811<br>(71.40) | 3.236<br>(82.20) |
| 24        | 1.819<br>(46.20) | 2.244<br>(57.00) |
| 22        | 1.654<br>(42.00) | 2.079<br>(52.80) |
| 20        | 1.488<br>(37.80) | 1.913<br>(48.60) |
| 18        | 1.323<br>(33.60) | 1.748<br>(44.40) |
| 16        | 1.157<br>(29.40) | 1.583<br>(40.20) |
| 14        | .992<br>(25.20)  | 1.417<br>(36.00) |
| 12        | .827<br>(21.00)  | 1.252<br>(31.80) |
| 10        | .661<br>(16.80)  | 1.087<br>(27.60) |
| 8         | .496<br>(12.60)  | .921<br>(23.40)  |
| 6         | .331<br>(8.40)   | .756<br>(19.20)  |
| 4         | .165<br>(4.20)   | .590<br>(15.00)  |
| 2         | —                | .425<br>(10.80)  |
| CKT. SIZE | DIM. "A"         | DIM. "B"         |



|                         |                 |
|-------------------------|-----------------|
| UPDATE NOTE 14          | QUALITY SYMBOLS |
| EC NO: UCP2015-4258     | ▽=0             |
| DRWN: JONT 2015/06/25   | ▽=0             |
| CHKD: JBELL 2015/06/25  | ▽=0             |
| APPR: FSMITH 2015/07/10 |                 |
| REV                     | DESCRIPTION     |
| D2                      |                 |

|   |                       |  |                             |                     |   |
|---|-----------------------|--|-----------------------------|---------------------|---|
| GENERAL TOLERANCES (UNLESS SPECIFIED)   | DIMENSION STYLE IN/MM |  | SCALE 2:1                   | DESIGN UNITS METRIC | THIRD ANGLE PROJECTION  |
|   | mm                    | INCH   | DRAWN BY GEP                | DATE 3/11/96        | TITLE   |
| 4 PLACES ±---   | ±---                  | ±---   | CHECKED BY RFJ              | DATE 3/11/96        | VERT. HEADER ASSY WITH MAKE-FIRST/BREAK-LAST MINI-FIT B.M.I. SERIES |
| 3 PLACES ±---   | ±.015                 | ±---   | APPROVED BY RFJ             | DATE 3/11/96        |   |
| 2 PLACES ±0.38  | ±---                  | ±---   | MATERIAL NO. SEE CHART      |                     | MOLEX INCORPORATED  |
| 1 PLACE ±---  | ±---                  | ±---   | DOCUMENT NO. SDA-43693-**** |                     |   |
| ANGULAR ±1/2°   |                       | DRAFT WHERE APPLICABLE MUST REMAIN WITHIN DIMENSIONS |                             | SHEET NO. 1 OF 2    |   |
| THIS DRAWING CONTAINS INFORMATION THAT IS PROPRIETARY TO MOLEX INCORPORATED AND SHOULD NOT BE USED WITHOUT WRITTEN PERMISSION |                       |  |                             |                     |   |

| 13         |                            | 12        |  | 11 |    |    | 10 |    |    | 9  |    |    | 8  |    |    | 7  |              |    | 6  |    |    | 5  |    |    | 4  |    |    | 3  |    |    | 2  |    |    | 1  |                |                | DIM "C" REF.   |
|------------|----------------------------|-----------|--|----|----|----|----|----|----|----|----|----|----|----|----|----|--------------|----|----|----|----|----|----|----|----|----|----|----|----|----|----|----|----|----|----------------|----------------|----------------|
| ITEM NO.   | CHARACTERISTIC DESCRIPTION | CKT. SIZE | TERMINAL VERSION REQUIRED AT EACH CIRCUIT LOCATION: 'S' = STD. LENGTH 'M' = MAKE-FIRST/BREAK-LAST 'V' = VOIDED CIRCUIT |    |    |    |    |    |    |    |    |    |    |    |    |    | DIM "C" REF. |    |    |    |    |    |    |    |    |    |    |    |    |    |    |    |    |    |                |                |                |
|            |                            |           | 1  | 2  | 3  | 4  | 5  | 6  | 7  | 8  | 9  | 10 | 11 | 12 | 13 | 14 |              | 15 | 16 | 17 | 18 | 19 | 20 | 21 | 22 | 23 | 24 | 25 | 26 | 27 | 28 | 29 | 30 | 31 | 32             | 33             | 34             |
| 43693-0001 | IOAC                       | 10        | CS   | CS | CM | CS | CS | CS | CS | CM | CS | CS | -  | -  | -  | -  | -            | -  | -  | -  | -  | -  | -  | -  | -  | -  | -  | -  | -  | -  | -  | -  | -  | -  | -              | .283<br>(7.20) |                |
| 43693-0002 | 24BA                       | 24        | AM   | AM | AM | AM | AM | AM | AM | AM | AM | AM | AM | AM | AM | AM | AM           | AS | AM | AM | AM | AM | AM | AM | AM | -  | -  | -  | -  | -  | -  | -  | -  | -  | -              | .154<br>(3.91) |                |
| 43693-0005 | I6BA                       | 16        | AS   | AS | AS | AS | AS | AS | AS | AS | AS | AS | AS | AS | AS | AS | -            | -  | -  | -  | -  | -  | -  | -  | -  | -  | -  | -  | -  | -  | -  | -  | -  | -  | .150<br>(3.81) |                |                |
| 43693-0020 | I8BA                       | 18        | AS   | AS | AS | AS | AS | AS | AS | AS | AS | AS | AS | AS | AS | AS | AS           | AS | AS | -  | -  | -  | -  | -  | -  | -  | -  | -  | -  | -  | -  | -  | -  | -  | .209<br>(5.31) |                |                |
| 43693-0022 | IOBA                       | 10        | AS   | AM | AM | AM | AM | AM | AM | AM | AM | AM | -  | -  | -  | -  | -            | -  | -  | -  | -  | -  | -  | -  | -  | -  | -  | -  | -  | -  | -  | -  | -  | -  | .321<br>(8.15) |                |                |
| 43693-0024 | 10BC                       | 10        | CS   | CS | CM | CS | CS | CM | CM | CM | CS | CS | -  | -  | -  | -  | -            | -  | -  | -  | -  | -  | -  | -  | -  | -  | -  | -  | -  | -  | -  | -  | -  | -  | .258<br>(6.55) |                |                |
| 43693-0027 | I8BA                       | 18        | AS   | AM | AM | AM | AM | AM | AM | AM | AM | AM | AM | AM | AM | AM | AM           | AM | AM | AS | -  | -  | -  | -  | -  | -  | -  | -  | -  | -  | -  | -  | -  | -  | -              | .283<br>(7.20) |                |
| 43693-0030 | I8BA                       | 18        | AS   | AS | AS | AS | AS | AS | AS | AS | AS | AS | AS | AS | AS | AS | AS           | AS | AS | AS | -  | -  | -  | -  | -  | -  | -  | -  | -  | -  | -  | -  | -  | -  | -              | .154<br>(3.91) |                |
| 43693-0031 | I8BA                       | 18        | AM   | AM | AM | AM | AM | AM | AM | AM | AM | AM | AM | AM | AM | AM | AM           | AM | AM | AM | -  | -  | -  | -  | -  | -  | -  | -  | -  | -  | -  | -  | -  | -  | -              | -              | .154<br>(3.91) |
| 43693-0037 | 18BD                       | 18        | DS   | DM | DM | DM | DM | DM | DM | DM | DM | DM | DM | DM | DM | DM | DM           | DM | DM | -  | -  | -  | -  | -  | -  | -  | -  | -  | -  | -  | -  | -  | -  | -  | -              | .258<br>(6.55) |                |

X = NOT AVAILABLE SEE NOTE 10

**CHARACTERISTICS LEGEND:**

CIRCUIT SIZE (02-24 & 36)

HOUSING MAT'L. (SEE NOTE 1)  
 \*A\* = NYLON 6/6, U.L. 94V-2, COLOR: NATURAL  
 \*B\* = NYLON 6/6, U.L. 94V-0, COLOR: NATURAL  
 \*C\* = PBT POLYESTER 94V-0, COLOR: BLACK

**TERMINAL PLATING (SEE NOTE 2)**  
 A = MATTE TIN  
 C = SELECT GOLD  
 D = REFLOW MATTE TIN

| <b>SEE SHEET 1</b><br>EC NO: UCP2015-4258<br>DRWN: MONTI 2015/06/25<br>CHKD: JEBELL 2015/06/25<br>APPR: FSMITH 2015/07/10 | QUALITY SYMBOLS                  | GENERAL TOLERANCES (UNLESS SPECIFIED)  | DIMENSION STYLE            | SCALE | DESIGN UNITS   | THIRD ANGLE PROJECTION |                |        |                 |       |               |       |   |       |          |      |  |     |         |            |      |  |     |         |  |             |      |  |     |         |  |       |        |  |
|---|----------------------------------|--|----------------------------|-------|----------------|------------------------|----------------|--------|-----------------|-------|---------------|-------|---|-------|----------|------|--|-----|---------|------------|------|--|-----|---------|--|-------------|------|--|-----|---------|--|-------|--------|--|
|   | ▽=0<br>▽=0<br>▽=0                | <table border="1"> <tr><th>mm</th><th>INCH</th></tr> <tr><td>4 PLACES ± ---</td><td>± ---</td></tr> <tr><td>3 PLACES ± ---</td><td>± .015</td></tr> <tr><td>2 PLACES ± 0.38</td><td>± ---</td></tr> <tr><td>1 PLACE ± ---</td><td>± ---</td></tr> </table> | mm                         | INCH  | 4 PLACES ± --- | ± ---                  | 3 PLACES ± --- | ± .015 | 2 PLACES ± 0.38 | ± --- | 1 PLACE ± --- | ± --- | <table border="1"> <tr><th>IN/MM</th><th>DRAWN BY</th><th>DATE</th></tr> <tr><td></td><td>GEP</td><td>3/11/96</td></tr> <tr><th>CHECKED BY</th><th>DATE</th><td></td></tr> <tr><td>RFJ</td><td>3/11/96</td><td></td></tr> <tr><th>APPROVED BY</th><th>DATE</th><td></td></tr> <tr><td>RFJ</td><td>3/11/96</td><td></td></tr> </table> | IN/MM | DRAWN BY | DATE |  | GEP | 3/11/96 | CHECKED BY | DATE |  | RFJ | 3/11/96 |  | APPROVED BY | DATE |  | RFJ | 3/11/96 |  | TITLE | METRIC |  |
|   | mm                               | INCH   |                            |       |                |                        |                |        |                 |       |               |       |   |       |          |      |  |     |         |            |      |  |     |         |  |             |      |  |     |         |  |       |        |  |
| 4 PLACES ± ---  | ± ---                            |  |                            |       |                |                        |                |        |                 |       |               |       |   |       |          |      |  |     |         |            |      |  |     |         |  |             |      |  |     |         |  |       |        |  |
| 3 PLACES ± ---  | ± .015                           |  |                            |       |                |                        |                |        |                 |       |               |       |   |       |          |      |  |     |         |            |      |  |     |         |  |             |      |  |     |         |  |       |        |  |
| 2 PLACES ± 0.38   | ± ---                            |  |                            |       |                |                        |                |        |                 |       |               |       |   |       |          |      |  |     |         |            |      |  |     |         |  |             |      |  |     |         |  |       |        |  |
| 1 PLACE ± ---   | ± ---                            |  |                            |       |                |                        |                |        |                 |       |               |       |   |       |          |      |  |     |         |            |      |  |     |         |  |             |      |  |     |         |  |       |        |  |
| IN/MM   | DRAWN BY                         | DATE   |                            |       |                |                        |                |        |                 |       |               |       |   |       |          |      |  |     |         |            |      |  |     |         |  |             |      |  |     |         |  |       |        |  |
|   | GEP                              | 3/11/96  |                            |       |                |                        |                |        |                 |       |               |       |   |       |          |      |  |     |         |            |      |  |     |         |  |             |      |  |     |         |  |       |        |  |
| CHECKED BY  | DATE                             |  |                            |       |                |                        |                |        |                 |       |               |       |   |       |          |      |  |     |         |            |      |  |     |         |  |             |      |  |     |         |  |       |        |  |
| RFJ   | 3/11/96                          |  |                            |       |                |                        |                |        |                 |       |               |       |   |       |          |      |  |     |         |            |      |  |     |         |  |             |      |  |     |         |  |       |        |  |
| APPROVED BY   | DATE                             |  |                            |       |                |                        |                |        |                 |       |               |       |   |       |          |      |  |     |         |            |      |  |     |         |  |             |      |  |     |         |  |       |        |  |
| RFJ   | 3/11/96                          |  |                            |       |                |                        |                |        |                 |       |               |       |   |       |          |      |  |     |         |            |      |  |     |         |  |             |      |  |     |         |  |       |        |  |
| <b>DRAFT WHERE APPLICABLE MUST REMAIN WITHIN DIMENSIONS</b>   | MATERIAL NO.<br><b>SEE CHART</b> | DOCUMENT NO.<br><b>SDA-43693-****</b>  | SHEET NO.<br><b>2 OF 2</b> |       |                |                        |                |        |                 |       |               |       |   |       |          |      |  |     |         |            |      |  |     |         |  |             |      |  |     |         |  |       |        |  |

THIS DRAWING CONTAINS INFORMATION THAT IS PROPRIETARY TO MOLEX INCORPORATED AND SHOULD NOT BE USED WITHOUT WRITTEN PERMISSION

## X-ON Electronics

Largest Supplier of Electrical and Electronic Components

*Click to view similar products for [Headers & Wire Housings](#) category:*

*Click to view products by [Molex](#) manufacturer:*

Other Similar products are found below :

[892-18-020-10-001101](#) [58102-G61-06LF](#) [582553-1](#) [0009485154](#) [009176003701906](#) [0050291907](#) [LY20-4P-DT1-P1E-BR](#) [02.125.8002.8](#)  
[609-3404](#) [61062-3](#) [622-0430](#) [622-3653LF](#) [63453-116](#) [636-1030](#) [636-1427](#) [636-3427](#) [636-4007](#) [641938-9](#) [641991-4](#) [644827-2](#) [65817-010LF](#)  
[65817-015LF](#) [65863-015LF](#) [66207-023LF](#) [67095-007LF](#) [67601157](#) [68648-049](#) [70.362.1628.0](#) [70-4210](#) [70-4226B](#) [70-4853B](#) [707-5020](#) [707-5028](#) [71.350.2428.0](#) [71918-208LF](#) [71961-016LF](#) [733-134](#) [733-162](#) [754199-000](#) [760-3052](#) [787-8014-00](#) [79531-3000](#) [FCN-360C032-B](#) [FCN-367T-T012/H](#) [FCN-723D010/2](#) [80.063.4001.1](#) [800-90-001-10-001000](#) [800-90-010-10-002000](#) [801-43-002-10-013000](#) [801-43-006-10-002000](#)