

PLEASE CHECK WWW.MOLEX.COM FOR LATEST PART INFORMATION

Part Number: [1301280116](#)
Status: **Active**
Overview: [Outlet Boxes](#)
Description: Woodhead FD Yellow Glass-Filled Polyester Box, Corrosion -resistant (2) 19.05mm (.750") Threaded Knock-out Openings

Documents:

[Drawing \(PDF\)](#)
[Brochure \(PDF\)](#)

[RoHS Certificate of Compliance \(PDF\)](#)

Agency Certification

UL E117594

General

Product Family Power Distribution
 Series [130128](#)
 Enclosure Rating N/A
 GFCI Reset N/A
 Mounting Style Permanent
 Open Neutral Relay N/A
 Overview [Outlet Boxes](#)
 Product Name Woodhead
 Receptacle Type N/A
 Type FD Box - Wet Location
 UPC 78678877953

Physical

Cord Diameter N/A
 Cord Grip Body Size N/A
 Cord Length N/A
 Feed-Thru Yes
 Flip Lid No
 Material - Housing PBT Glass-Filled
 Net Weight 449.056/g
 Number of Receptacles 0
 Packaging Type Carton

Electrical

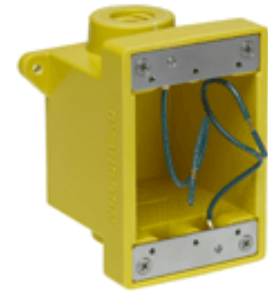
Cord Type N/A
 Current - Maximum per Contact N/A
 GFCI No
 Ground Continuity Monitor No
 NEMA Configuration N/A
 Voltage - Maximum N/A

Material Info

Engineering Number 453CR

Reference - Drawing Numbers

Sales Drawing 1301280113-000



Series image - Reference only

EU ELV

Not Relevant

EU RoHS

Not Reviewed

REACH SVHC

Not Reviewed

Halogen-Free

Status

Not Reviewed

For more information, please visit [Contact US](#)

China ROHS

Not Reviewed

ELV

Not Relevant

RoHS Phthalates

Not Reviewed

Search Parts in this Series

[130128 Series](#)

X-ON Electronics

Largest Supplier of Electrical and Electronic Components

Click to view similar products for [Gate Drivers](#) category:

Click to view products by [Molex](#) manufacturer:

Other Similar products are found below :

[00053P0231](#) [8967380000](#) [56956](#) [CR7E-30DB-3.96E\(72\)](#) [57.404.7355.5](#) [LT4936](#) [57.904.0755.0](#) [5803-0901](#) [58410](#) [5882900001](#) [00600P0005](#)
[00-9050-LRPP](#) [00-9090-RDPP](#) [5951900000](#) [01-1003W-10/32-15](#) [LTLA6E-1S-WH-RC-FN12VXCR1](#) [0131700000](#) [00-2240](#) [LTP70N06](#)
[LVP640](#) [0158-624-00](#) [5J0-1000LG-SIL](#) [020017-13](#) [LY1D-2-5S-AC120](#) [LY2-0-US-AC120](#) [LY2-US-AC240](#) [LY3-UA-DC24](#) [00-5150](#)
[00576P0020](#) [00600P0010](#) [LZNQ2M-US-DC5](#) [LZNQ2-US-DC12](#) [LZP40N10](#) [00-8196-RDPP](#) [00-8274-RDPP](#) [00-8275-RDNP](#) [00-8609-](#)
[RDPP](#) [00-8722-RDPP](#) [00-8728-WHPP](#) [00-8869-RDPP](#) [00-9051-RDPP](#) [00-9091-LRPP](#) [00-9291-RDPP](#) [0207100000](#) [0207400000](#) [60100564](#)
[01312](#) [0134220000](#) [6035](#) [M15730061](#)