

PLEASE CHECK WWW.MOLEX.COM FOR LATEST PART INFORMATION

Part Number: [0464379204](#)
Status: **Active**
Overview: [EXTreme Ten60Power High-Current Connector](#)
Description: EXTreme Ten60Power Right-Angle Plug without Guides, 4 DC Power Circuits, Press Fit Tail

Documents:

3D Model	Packaging Specification PK-46437-001-000 (PDF)
3D Model (PDF)	Test Summary 464361000-TS-000 (PDF)
Drawing (PDF)	Datasheet (PDF)
Product Specification PS-46436-100-001 (PDF)	RoHS Certificate of Compliance (PDF)
Application Specification AS-46436-100-001 (PDF)	

Agency Certification

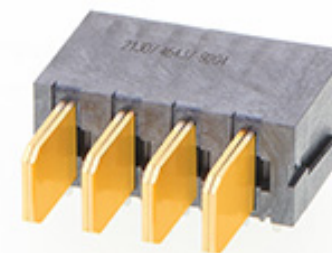
CSA	LR19980
UL	E29179

General

Product Family	PCB Headers
Series	46437
Application	Board-to-Board, Power
Comments	See Product Specification for details
Overview	EXTreme Ten60Power High-Current Connector
Product Name	EXTreme Ten60Power
UPC	193264043941

Physical

(p)ower-(s)ignal Configuration	4p - 0s
Breakaway	No
Circuits (Loaded)	4
Circuits (maximum)	4
Color - Resin	Black
Durability (mating cycles max)	200
First Mate / Last Break	No
Flammability	94V-0
Glow-Wire Capable	No
Guide to Mating Part	No
Keying to Mating Part	None
Lock to Mating Part	No
Mated Height	10.00mm
Material - Metal	Copper Alloy
Material - Plating Mating	Gold
Material - Plating Termination	Matte Tin
Material - Resin	Liquid Crystal Polymer
Net Weight	11.969/g
Number of Rows	1
Orientation	Right Angle
PC Tail Length	3.28mm
PCB Locator	No
PCB Retention	Yes
PCB Thickness - Recommended	1.58mm
Packaging Type	Tray
Pitch - Mating Interface	5.50mm
Plating min - Mating	0.762µm
Plating min - Termination	2.540µm
Polarized to Mating Part	Yes
Polarized to PCB	Yes



Series image - Reference only

EU ELV

Not Relevant

EU RoHS

Compliant

REACH SVHC

Not Contained Per -
D(2021)4569-DC (8
July 2021)

Halogen-Free

Status

Low-Halogen

For more information, please visit [Contact US](#)

China ROHS

ELV

RoHS Phthalates

Green Image

Not Relevant

Not Contained

Search Parts in this Series

[46437 Series](#)

Mates With

EXTreme Ten60Power Right-Angle Receptacle [464369204](#) . EXTreme Ten60Power Vertical Receptacle [465629204](#)

Stackable	No
Surface Mount Compatible (SMC)	No
Temperature Range - Operating	-40° to +105°C
Termination Interface: Style	Through Hole - Compliant Pin

Electrical

Current - Maximum per Contact	60.0A
Voltage - Maximum	600V AC / 250V DC

Material Info

Reference - Drawing Numbers

Application Specification	AS-46436-100-001
Packaging Specification	PK-46437-001-000
Product Specification	PS-46436-100-001
Sales Drawing	SD-46437-9000-001
Test Summary	464361000-TS-000

This document was generated on 02/01/2022

PLEASE CHECK WWW.MOLEX.COM FOR LATEST PART INFORMATION

X-ON Electronics

Largest Supplier of Electrical and Electronic Components

Click to view similar products for [Power to the Board](#) category:

Click to view products by [Molex](#) manufacturer:

Other Similar products are found below :

[6450552-7](#) [6643429-1](#) [6646040-2](#) [6766604-1](#) [120959-1](#) [1393557-2](#) [1393532-2](#) [1393532-3](#) [1393532-4](#) [1393557-1](#) [1744132-7](#) [1766250-1](#)
[1892109-1](#) [1-6450850-6](#) [1-6450869-6](#) [1645526-2](#) [2005243-2](#) [377-0020-11130](#) [MC116N](#) [TE34-12-16P-F0](#) [51700-10201602AALF](#) [51970-004](#) [5-6450830-6](#) [4-6600333-3](#) [10125416-4050LF](#) [10130248-005LF](#) [6600320-3](#) [IPBT-103-H1-T-S-RA](#) [1888123-2](#) [6766605-1](#) [701-15-02109](#)
[6450810-7](#) [46437-1112](#) [6450813-2](#) [6450842-4](#) [10108877-R24403SLF](#) [1645523-1](#) [PSS-06-01-T-S](#) [FWS-03-04-T-S](#) [51760-10301603ABLF](#)
[MDF6-TA2022HC](#) [FWS-05-01-T-S](#) [51720-10206002AALF](#) [QE-POL-KEY](#) [FWS-08-01-T-S](#) [698-0075-04](#) [6651670-1](#) [MC120N](#) [2-1600788-6](#)
[1761385-3](#)