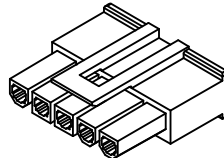
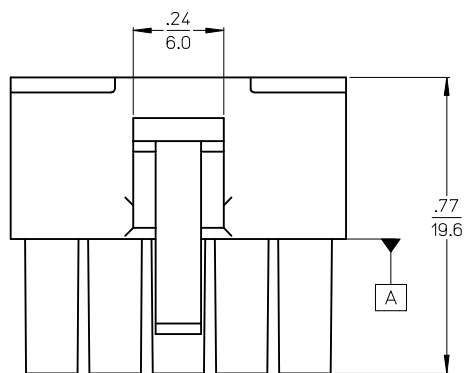


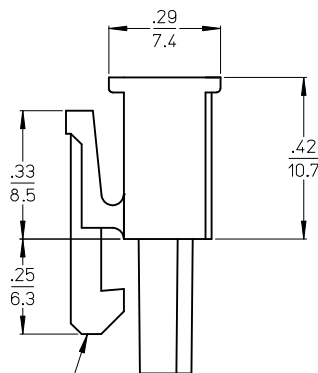
POSITIVE LATCH
SCALE 2:1



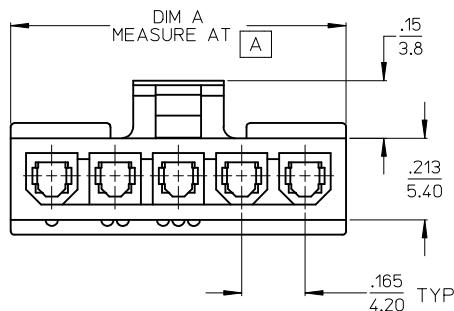
PASSIVE LATCH
SCALE 2:1



POSITIVE LATCH



PASSIVE LATCH

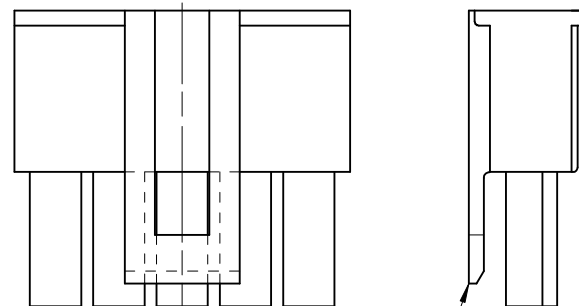


LEGEND:

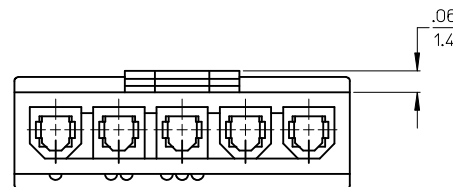
| | | |
|---------------|-------------------------------|------------------------------|
| | 46994-* | * * * |
| CIRCUIT SIZE | | |
| MATERIAL | SEE NOTE 1 | |
| CONFIGURATION | 2= SINGLE ROW, POSITIVE LATCH | 4= SINGLE ROW, PASSIVE LATCH |

- NOTES:
- MATERIAL:
 - 0 = NYLON, UL94V-2, COLOR: NATURAL, (BEIGE); IEC 60335-1, 5th EDITION GLOW WIRE CAPABLE.
 - 1 = NYLON, UL94V-2, COLOR: BLACK; IEC 60335-1, 5th EDITION GLOW WIRE CAPABLE.
 - FINISH: NOT APPLICABLE
 - PRODUCT SPECIFICATION: PS-5556-001
 - PACKAGING: PK-5557-002
 - PART MATES WITH MOLEX PLUG #172646 AND HEADERS #172647 AND #172648.
 - PART TO BE USED WITH MOLEX FEMALE TERMINAL #5556.
 - PART IS NOT DESIGNED FOR CURRENT SHARING.
 - CONNECTORS ARE NOT TO BE MATED OR UNMATED WHILE CIRCUITS ARE LIVE.
 - WIRES ARE TO BE DRESSED IN SUCH A MANNER TO ALLOW THE TERMINALS TO FLOAT FREELY IN THE POCKET.
 - PART CONFORMS TO CLASS "B" REQUIREMENTS OF COSMETIC SPECIFICATION PS-45499-002 WITH THE EXCEPTION OF DISCOLORATION, FLASH AND SINK MEET CLASS "C" REQUIREMENTS.
 - TEXT ON PART IS FOR REFERENCE ONLY. TEXT AND TEXT LOCATION MAY VARY DEPENDING ON PART NUMBER AND/OR TOOL.

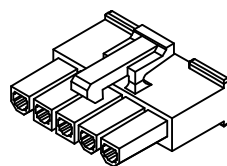
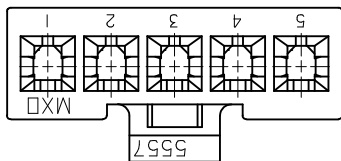
| MATERIAL NUMBER | MATERIAL/COLOR | TOOL STATUS | CKT SIZE | LATCH STYLE | DIM A |
|-----------------|--------------------|-------------|----------|-------------|---------------|
| 46994-0212 | V-2/BLACK | TOOLED | 2 | POSITIVE | .378/(9.60) |
| 46994-0412 | V-2/BLACK | TOOLED | 4 | POSITIVE | .709/(18.00) |
| 46994-0512 | V-2/BLACK | TOOLED | 5 | POSITIVE | .874/(22.20) |
| 46994-0612 | V-2/BLACK | TOOLED | 6 | POSITIVE | 1.039/(26.40) |
| 46994-0712 | V-2/BLACK | NOT TOOLED | 7 | POSITIVE | 1.205/(30.60) |
| 46994-0514 | V-2/BLACK | NOT TOOLED | 5 | PASSIVE | .874/(22.20) |
| 46994-0202 | V-2/NATURAL(BEIGE) | TOOLED | 2 | POSITIVE | .378/(9.60) |
| 46994-0402 | V-2/NATURAL(BEIGE) | TOOLED | 4 | POSITIVE | .709/(18.00) |
| 46994-0502 | V-2/NATURAL(BEIGE) | TOOLED | 5 | POSITIVE | .874/(22.20) |
| 46994-0602 | V-2/NATURAL(BEIGE) | TOOLED | 6 | POSITIVE | 1.039/(26.40) |



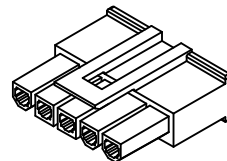
PASSIVE LATCH



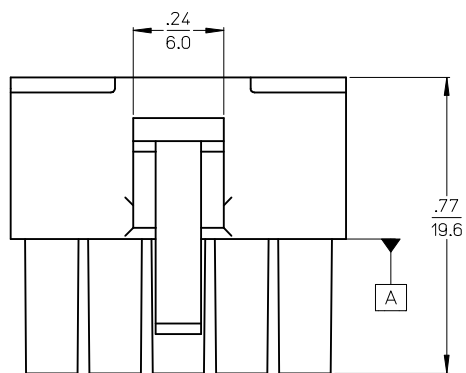
| ADD NOTE 11 IEC NO: UCP2017-2790 DRW: ZHARPER 2017/06/26 CHKD: APPR: FSMITH 2017/06/28 | QUALITY SYMBOLS | GENERAL TOLERANCES (UNLESS SPECIFIED) <table border="1"> <thead> <tr> <th></th> <th>mm</th> <th>INCH</th> </tr> </thead> <tbody> <tr> <td>4 PLACES</td> <td>± .005</td> <td>± .0005</td> </tr> <tr> <td>3 PLACES</td> <td>± .005</td> <td>± .010</td> </tr> <tr> <td>2 PLACES</td> <td>± .025</td> <td>± .015</td> </tr> <tr> <td>1 PLACE</td> <td>± .38</td> <td>± .015</td> </tr> <tr> <td>0 PLACE</td> <td>±</td> <td>±</td> </tr> </tbody> </table> | | mm | INCH | 4 PLACES | ± .005 | ± .0005 | 3 PLACES | ± .005 | ± .010 | 2 PLACES | ± .025 | ± .015 | 1 PLACE | ± .38 | ± .015 | 0 PLACE | ± | ± | DIMENSION STYLE IN/MM | SCALE DESIGN UNITS METRIC | THIRD ANGLE PROJECTION |
|--|---------------------|--|---------|--------------------------------------|------|----------|--------|---------|----------|--------|--------|----------|--------|--------|---------|-------|--------|---------|---|---|---------------------------------|--|------------------------|
| | | mm | INCH | | | | | | | | | | | | | | | | | | | | |
| | 4 PLACES | ± .005 | ± .0005 | | | | | | | | | | | | | | | | | | | | |
| | 3 PLACES | ± .005 | ± .010 | | | | | | | | | | | | | | | | | | | | |
| 2 PLACES | ± .025 | ± .015 | | | | | | | | | | | | | | | | | | | | | |
| 1 PLACE | ± .38 | ± .015 | | | | | | | | | | | | | | | | | | | | | |
| 0 PLACE | ± | ± | | | | | | | | | | | | | | | | | | | | | |
| DRAWN BY: NNGUYEN DATE: 2013/04/15 CHECKED BY: JBELL DATE: 2013/04/15 APPROVED BY: FSMITH DATE: 2014/05/16 | | TITLE MINI-FIT JR. RECEPTACLE SINGLE ROW GLOW WIRE | | | | | | | | | | | | | | | | | | | | | |
| ANGULAR ±1/2° DRAFT WHERE APPLICABLE MUST REMAIN WITHIN DIMENSIONS | | MATERIAL NO. SEE CHART | | DOCUMENT NO. SD-46994-0000 | | | | | | | | | | | | | | | | | | | |
| SIZE C | | THIS DRAWING CONTAINS INFORMATION THAT IS PROPRIETARY TO MOLEX. INCORPORATED AND SHOULD NOT BE USED WITHOUT WRITTEN PERMISSION | | | | | | | | | | | | | | | | | | | | | |



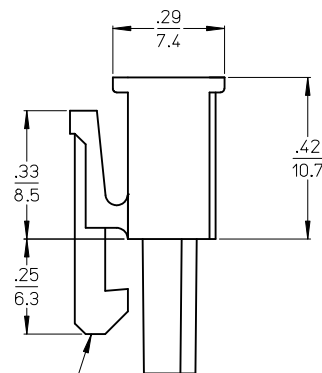
POSITIVE LATCH
SCALE 2:1



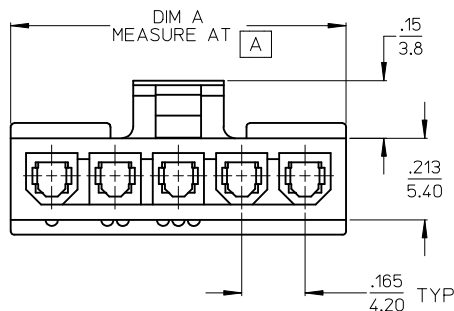
PASSIVE LATCH
SCALE 2:1



POSITIVE LATCH



PASSIVE LATCH

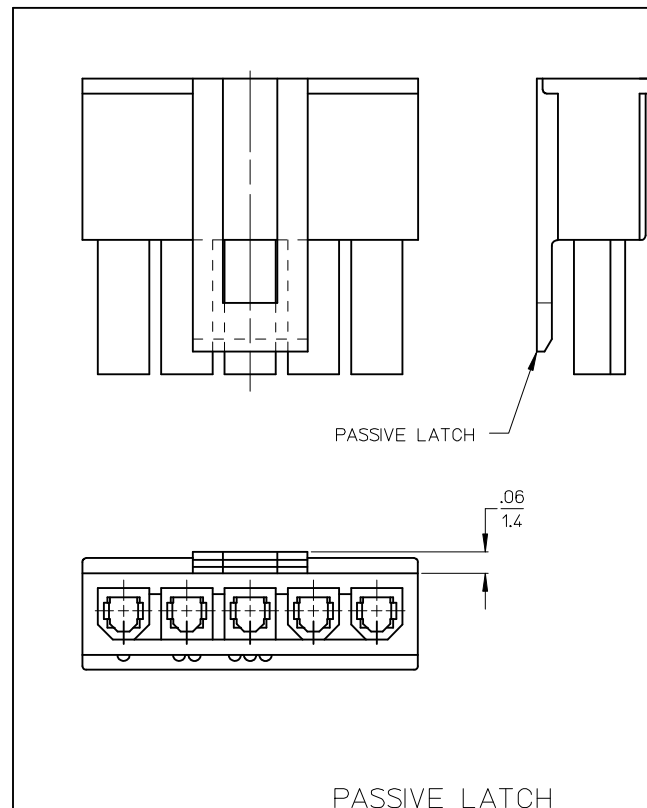


LEGEND:

| | |
|---------------|---|
| CIRCUIT SIZE | 46994-*** |
| MATERIAL | SEE NOTE 1 |
| CONFIGURATION | 2=SINGLE ROW, POSITIVE LATCH 4=SINGLE ROW, PASSIVE LATCH |

- NOTES:
- MATERIAL:
0 = NYLON, UL94V-2, COLOR: NATURAL, (BEIGE); IEC 60335-1, 5th EDITION GLOW WIRE CAPABLE.
1 = NYLON, UL94V-2, COLOR: BLACK; IEC 60335-1, 5th EDITION GLOW WIRE CAPABLE.
 - FINISH: NOT APPLICABLE
 - PRODUCT SPECIFICATION: PS-5556-001
 - PACKAGING: PK-5557-002
 - PART MATES WITH MOLEX PLUG #172646 AND HEADERS #172647 AND #172648.
 - PART TO BE USED WITH MOLEX FEMALE TERMINAL #5556.
 - PART IS NOT DESIGNED FOR CURRENT SHARING.
 - CONNECTORS ARE NOT TO BE MATED OR UNMATED WHILE CIRCUITS ARE LIVE.
 - WIRES ARE TO BE DRESSED IN SUCH A MANNER TO ALLOW THE TERMINALS TO FLOAT FREELY IN THE POCKET.
 - PART CONFORMS TO CLASS "B" REQUIREMENTS OF COSMETIC SPECIFICATION PS-45499-002 WITH THE EXCEPTION OF DISCOLORATION, FLASH AND SINK MEET CLASS "C" REQUIREMENTS.
 - TEXT ON PART IS FOR REFERENCE ONLY. TEXT AND TEXT LOCATION MAY VARY DEPENDING ON PART NUMBER AND/OR TOOL.

| MATERIAL NUMBER | MATERIAL/COLOR | TOOL STATUS | CKT SIZE | LATCH STYLE | DIM A |
|-----------------|--------------------|-------------|----------|-------------|---------------|
| 46994-0212 | V-2/BLACK | TOOLED | 2 | POSITIVE | .378/(9.60) |
| 46994-0412 | V-2/BLACK | TOOLED | 4 | POSITIVE | .709/(18.00) |
| 46994-0512 | V-2/BLACK | TOOLED | 5 | POSITIVE | .874/(22.20) |
| 46994-0612 | V-2/BLACK | TOOLED | 6 | POSITIVE | 1.039/(26.40) |
| 46994-0712 | V-2/BLACK | NOT TOOLED | 7 | POSITIVE | 1.205/(30.60) |
| 46994-0514 | V-2/BLACK | NOT TOOLED | 5 | PASSIVE | .874/(22.20) |
| 46994-0202 | V-2/NATURAL(BEIGE) | TOOLED | 2 | POSITIVE | .378/(9.60) |
| 46994-0402 | V-2/NATURAL(BEIGE) | TOOLED | 4 | POSITIVE | .709/(18.00) |
| 46994-0502 | V-2/NATURAL(BEIGE) | TOOLED | 5 | POSITIVE | .874/(22.20) |
| 46994-0602 | V-2/NATURAL(BEIGE) | TOOLED | 6 | POSITIVE | 1.039/(26.40) |



PASSIVE LATCH

| ADD NOTE 11 IEC NO: UCP2017-2790 DRW:ZHARPER 2017/06/26 CHKD: APPR:FSMITH 2017/06/28 | QUALITY SYMBOLS | GENERAL TOLERANCES (UNLESS SPECIFIED) <table border="1"> <thead> <tr> <th></th> <th>mm</th> <th>INCH</th> </tr> </thead> <tbody> <tr> <td>4 PLACES</td> <td>± .010</td> <td>± .0004</td> </tr> <tr> <td>3 PLACES</td> <td>± .010</td> <td>± .0004</td> </tr> <tr> <td>2 PLACES</td> <td>± .015</td> <td>± .0006</td> </tr> <tr> <td>1 PLACE</td> <td>± .025</td> <td>± .0010</td> </tr> <tr> <td>0 PLACE</td> <td>± .038</td> <td>± .0015</td> </tr> </tbody> </table> | | mm | INCH | 4 PLACES | ± .010 | ± .0004 | 3 PLACES | ± .010 | ± .0004 | 2 PLACES | ± .015 | ± .0006 | 1 PLACE | ± .025 | ± .0010 | 0 PLACE | ± .038 | ± .0015 | DIMENSION STYLE IN/MM | SCALE DESIGN UNITS METRIC | THIRD ANGLE PROJECTION |
|--|---------------------|---|---|---|--|----------|--------|---------|----------|--------|---------|----------|--------|---------|---------|--------|---------|---------|--------|---------|---------------------------------|--|------------------------|
| | | mm | INCH | | | | | | | | | | | | | | | | | | | | |
| | 4 PLACES | ± .010 | ± .0004 | | | | | | | | | | | | | | | | | | | | |
| | 3 PLACES | ± .010 | ± .0004 | | | | | | | | | | | | | | | | | | | | |
| 2 PLACES | ± .015 | ± .0006 | | | | | | | | | | | | | | | | | | | | | |
| 1 PLACE | ± .025 | ± .0010 | | | | | | | | | | | | | | | | | | | | | |
| 0 PLACE | ± .038 | ± .0015 | | | | | | | | | | | | | | | | | | | | | |
| DRAFT WHERE APPLICABLE MUST REMAIN WITHIN DIMENSIONS | | ANGULAR ±1/2° | DRAWN BY NGUYEN DATE 2013/04/15 | CHECKED BY JBELL DATE 2013/04/15 | TITLE MINI-FIT JR. RECEPTACLE SINGLE ROW GLOW WIRE | | | | | | | | | | | | | | | | | | |
| A3 | | MATERIAL NO. SEE CHART | APPROVED BY FSMITH DATE 2014/05/16 | DOCUMENT NO. SD-46994-0000 | SHEET NO. 1 OF 1 | | | | | | | | | | | | | | | | | | |
| THIS DRAWING CONTAINS INFORMATION THAT IS PROPRIETARY TO MOLEX. INCORPORATED AND SHOULD NOT BE USED WITHOUT WRITTEN PERMISSION | | | | | | | | | | | | | | | | | | | | | | | |

X-ON Electronics

Largest Supplier of Electrical and Electronic Components

Click to view similar products for [Headers & Wire Housings](#) category:

Click to view products by [Molex](#) manufacturer:

Other Similar products are found below :

[892-18-020-10-001101](#) [58102-G61-06LF](#) [582553-1](#) [0009485154](#) [009176003701906](#) [0050291907](#) [LY20-4P-DT1-P1E-BR](#) [02.125.8002.8](#)
[609-3404](#) [61062-3](#) [622-0430](#) [622-3653LF](#) [63453-116](#) [636-1030](#) [636-1427](#) [636-3427](#) [636-4007](#) [641938-9](#) [641991-4](#) [644827-2](#) [65817-010LF](#)
[65817-015LF](#) [65863-015LF](#) [66207-023LF](#) [67095-007LF](#) [67601157](#) [68648-049](#) [70.362.1628.0](#) [70-4210](#) [70-4226B](#) [70-4853B](#) [707-5020](#) [707-](#)
[5028](#) [71.350.2428.0](#) [71918-208LF](#) [71961-016LF](#) [733-134](#) [733-162](#) [754199-000](#) [760-3052](#) [787-8014-00](#) [79531-3000](#) [FCN-360C032-B](#) [FCN-](#)
[367T-T012/H](#) [FCN-723D010/2](#) [80.063.4001.1](#) [800-90-001-10-001000](#) [800-90-010-10-002000](#) [801-43-002-10-013000](#) [801-43-006-10-002000](#)