

PLEASE CHECK WWW.MOLEX.COM FOR LATEST PART INFORMATION

**Part Number:** 5025780700

**Status:** Active

**Overview:** CLIK-Mate Wire-to-Board Connectors

**Description:** 1.50mm Pitch, CLIK-Mate Plug Crimp Housing, Single Row, Positive Lock, 7 Circuits, Beige

**Documents:**

<a href="#">3D Model (PDF)</a>	<a href="#">Product Specification 5025781000-PS-000 (PDF)</a>
<a href="#">Drawing (PDF)</a>	<a href="#">Product Specification 5025781002-PS-000 (PDF)</a>
<a href="#">3D Model</a>	<a href="#">Product Specification 5025781003-PS-000 (PDF)</a>
<a href="#">Product Specification 5025780000-PS-000 (PDF)</a>	<a href="#">Product Specification 5025781004-PS-000 (PDF)</a>
<a href="#">Product Specification 5025780001-PS-000 (PDF)</a>	<a href="#">Application Specification AS-502578-001-001 (PDF)</a>
<a href="#">Product Specification 5025780002-PS-000 (PDF)</a>	<a href="#">Application Specification AS-503395-001-001 (PDF)</a>
<a href="#">Product Specification 5025780003-PS-000 (PDF)</a>	<a href="#">Packaging Specification SPK-502578-001-001 (PDF)</a>
<a href="#">Product Specification 5025780004-PS-000 (PDF)</a>	<a href="#">RoHS Certificate of Compliance (PDF)</a>

**Agency Certification**

UL E29179

**General**

Product Family	Crimp Housings
Series	502578
Application	Signal, Wire-to-Board
Overview	CLIK-Mate Wire-to-Board Connectors
Product Name	CLIK-Mate
UPC	800756700328

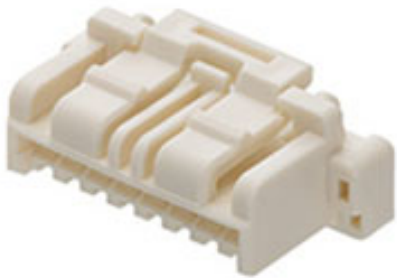
**Physical**

Circuits (maximum)	7
Color - Resin	Beige
Flammability	SC-0
Gender	Plug
Glow-Wire Capable	No
Keying to Mating Part	None
Lock to Mating Part	Yes
Material - Resin	PBT
Net Weight	365.400/mg
Number of Rows	1
Packaging Type	Bag
Panel Mount	No
Pitch - Mating Interface	1.50mm
Pitch - Termination Interface	1.50mm
Polarized to Mating Part	Yes
Stackable	No
Temperature Range - Operating	-40° to +105°C

**Material Info**

**Reference - Drawing Numbers**

Application Specification	AS-502578-001-001, AS-503395-001-001
Packaging Specification	SPK-502578-001-001
Product Specification	5025780000-PS-000, 5025780001-PS-000, 5025780002-PS-000, 5025780003-PS-000, 5025780004-PS-000, 5025781000-PS-000, 5025781002-PS-000, 5025781003-PS-000, 5025781004-PS-000
Sales Drawing	5025780000-SD-000



Series image - Reference only

**EU ELV**

Not Relevant

**EU RoHS**

Compliant

**REACH SVHC**

Not Contained Per -  
D(2021)4569-DC (8  
July 2021)

**Halogen-Free**

**Status**

Not Low-Halogen

For more information, please visit [Contact US](#)

**China RoHS**

China ROHS	Green Image
ELV	Not Relevant
RoHS Phthalates	Not Contained

**Search Parts in this Series**

502578 Series

**Mates With**

CLIK-Mate Bottom-Entry Receptacle [503395](#)  
. CLIK-Mate Right Angle Receptacles  
[503175](#) , [502585](#) , [213226](#) . CLIK-Mate  
Vertical Receptacles [503159](#) , [502584](#) ,  
[213225](#)

**Use With**

CLIK-Mate Tin Terminals [502579](#) , [503429](#)  
<br> CLIK-Mate Gold Terminals [213028](#) ,  
[213029](#) <br> CLIK-Mate Pre-Crimped Lead  
[797581011](#) , [215710](#) , [215711](#)

This document was generated on 09/01/2021

**PLEASE CHECK [WWW.MOLEX.COM](http://WWW.MOLEX.COM) FOR LATEST PART INFORMATION**

## X-ON Electronics

Largest Supplier of Electrical and Electronic Components

*Click to view similar products for [Headers & Wire Housings](#) category:*

*Click to view products by [Molex](#) manufacturer:*

Other Similar products are found below :

[892-18-020-10-001101](#) [58102-G61-06LF](#) [582553-1](#) [0009485154](#) [009176003701906](#) [0050291907](#) [LY20-4P-DT1-P1E-BR](#) [02.125.8002.8](#)  
[609-3404](#) [61062-3](#) [622-0430](#) [622-3653LF](#) [63453-116](#) [636-1030](#) [636-1427](#) [636-3427](#) [636-4007](#) [641938-9](#) [641991-4](#) [644827-2](#) [65817-010LF](#)  
[65817-015LF](#) [65863-015LF](#) [66207-023LF](#) [67095-007LF](#) [67601157](#) [68648-049](#) [70.362.1628.0](#) [70-4210](#) [70-4226B](#) [70-4853B](#) [707-5020](#) [707-](#)  
[5028](#) [71.350.2428.0](#) [71918-208LF](#) [71961-016LF](#) [733-134](#) [733-162](#) [754199-000](#) [760-3052](#) [787-8014-00](#) [79531-3000](#) [FCN-360C032-B](#) [FCN-](#)  
[367T-T012/H](#) [FCN-723D010/2](#) [80.063.4001.1](#) [800-90-001-10-001000](#) [800-90-010-10-002000](#) [801-43-002-10-013000](#) [801-43-006-10-002000](#)