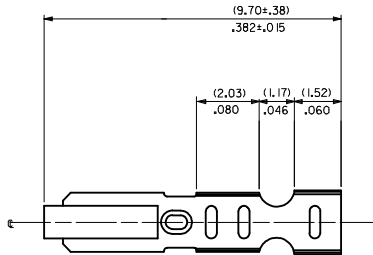
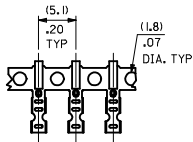
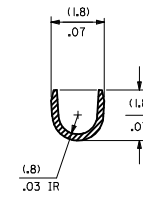
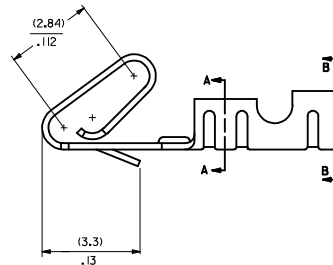
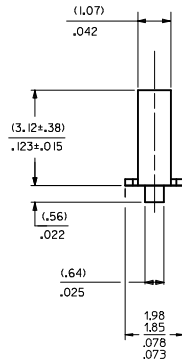


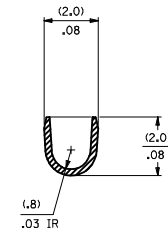
CARRIER VIEW



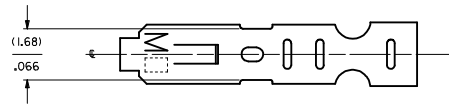
- NOTES:
1. MATERIAL: 10.203±0.010/.0080±.0004 THICK BRASS
 2. FINISH: P909 - OVERALL HOT TIN DIP: (0.00254)/.000100 MIN.
 3. PRODUCT SPEC: PS-10-07
 4. PACKAGING SPECIFICATION: LOOSE FORM TERMINALS: PER PK-2759-001
CHAIN FORM TERMINALS: PER PK-2759-002
 5. CRIMP IS FOR 22-30 GA WIRE WITH (1.57)/.062 DIA INSULATION MAX.
 6. INSERTION FORCE OF TERMINAL INTO (2.54)/.100 CENTERLINE CONNECTOR IS 2.5 LBS. MAX
 7. TERMINAL RETENTION IN HOUSING IS 26.7N / 6 LBS MIN. WHEN PULLED AT THE RATE OF 25.4MM / 1 INCH PER MINUTE.
 8. DIMENSIONS GIVEN ACROSS CENTERLINES ARE SYMMETRICAL ABOUT THOSE CENTERLINES WITHIN HALF THE TOTAL TOLERANCE.
 9. THIS PART CONFORMS TO CLASS B REQUIREMENTS OF COSMETIC SPECIFICATION PS-45499-002.



SECTION A-A
BACKGROUND OMITTED

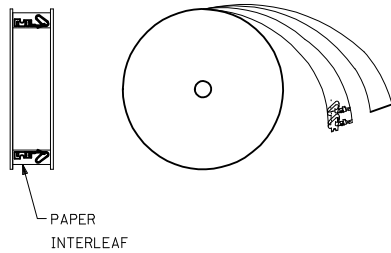


SECTION B-B
BACKGROUND OMITTED

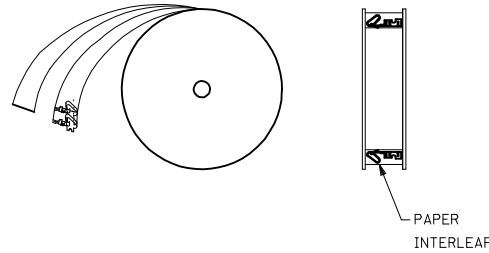


2759-(***)*	
PART NUMBER	ENGINEERING NUMBER
50-29-1638	2759-(P909)L
50-29-1757	2759-(P909)B

WINDING DETAIL "A"



WINDING DETAIL "B"



2759-(***)*

FORM
L=LOOSE
A=CHAIN, PER WINDING DETAIL 'A'
B=CHAIN, PER WINDING DETAIL 'B'

PLATING
SEE NOTE 2

ADD WINDING DETAIL EDC NO: UCF2014-4131 DRAWN/KIPPER 2014/04/08 CHK/DANGUEN 2014/04/08 APPR/FSM/TH 2014/04/21	QUALITY SYMBOLS	GENERAL TOLERANCES (UNLESS SPECIFIED)	DIMENSION STYLE	SCALE	DESIGN UNITS	THIRD ANGLE PROJECTION	
	▽=0 ▽=0 ▽=0	mm INCH 4 PLACES ± --- ± --- 3 PLACES ± --- ± .010 2 PLACES ± 0.25 ± .014 1 PLACE ± 0.36 ± --- 0 PLACE ± ±	MM/IN	---	INCH	DRAWN BY DATE JJS 07/29/104 CHECKED BY DATE KSS 07/29/104 APPROVED BY DATE YM 07/29/104	TITLE CRIMP TERMINAL 22-30 GA WIRE
	ANGULAR ±1/2° DRAFT WHERE APPLICABLE MUST REMAIN WITHIN DIMENSIONS	MATERIAL NO. SEE CHART	DOCUMENT NO. SD-2759-001	SHEET NO. 1 OF 1			
	THIS DRAWING CONTAINS INFORMATION THAT IS PROPRIETARY TO MOLEX INCORPORATED AND SHOULD NOT BE USED WITHOUT WRITTEN PERMISSION						

X-ON Electronics

Largest Supplier of Electrical and Electronic Components

Click to view similar products for [Headers & Wire Housings](#) category:

Click to view products by [Molex](#) manufacturer:

Other Similar products are found below :

[892-18-020-10-001101](#) [58102-G61-06LF](#) [582553-1](#) [0009485154](#) [009176003701906](#) [0050291907](#) [LY20-4P-DT1-P1E-BR](#) [02.125.8002.8](#)
[609-3404](#) [61062-3](#) [622-0430](#) [622-3653LF](#) [63453-116](#) [636-1030](#) [636-1427](#) [636-3427](#) [636-4007](#) [641938-9](#) [641991-4](#) [644827-2](#) [65817-010LF](#)
[65817-015LF](#) [65863-015LF](#) [66207-023LF](#) [67095-007LF](#) [67601157](#) [68648-049](#) [70.362.1628.0](#) [70-4210](#) [70-4226B](#) [70-4853B](#) [707-5020](#) [707-](#)
[5028](#) [71.350.2428.0](#) [71918-208LF](#) [71961-016LF](#) [733-134](#) [733-162](#) [754199-000](#) [760-3052](#) [787-8014-00](#) [79531-3000](#) [FCN-360C032-B](#) [FCN-](#)
[367T-T012/H](#) [FCN-723D010/2](#) [80.063.4001.1](#) [800-90-001-10-001000](#) [800-90-010-10-002000](#) [801-43-002-10-013000](#) [801-43-006-10-002000](#)