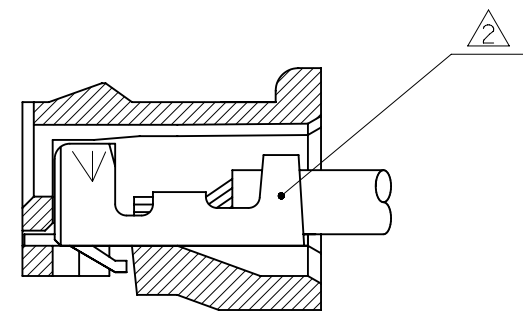
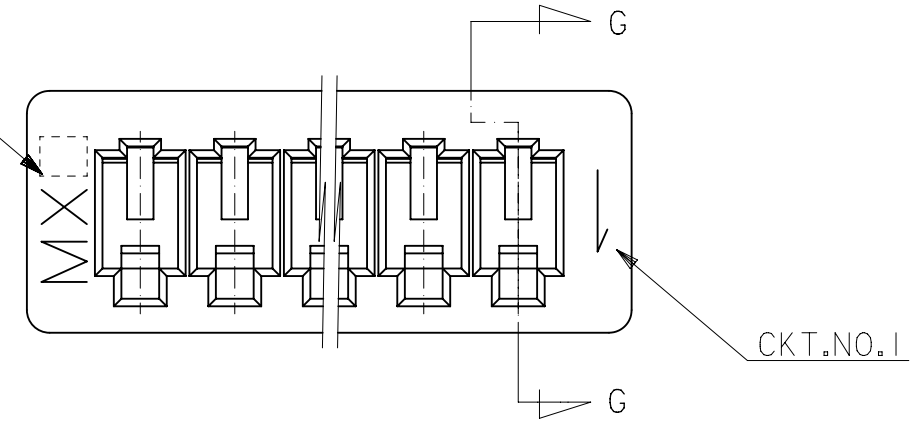


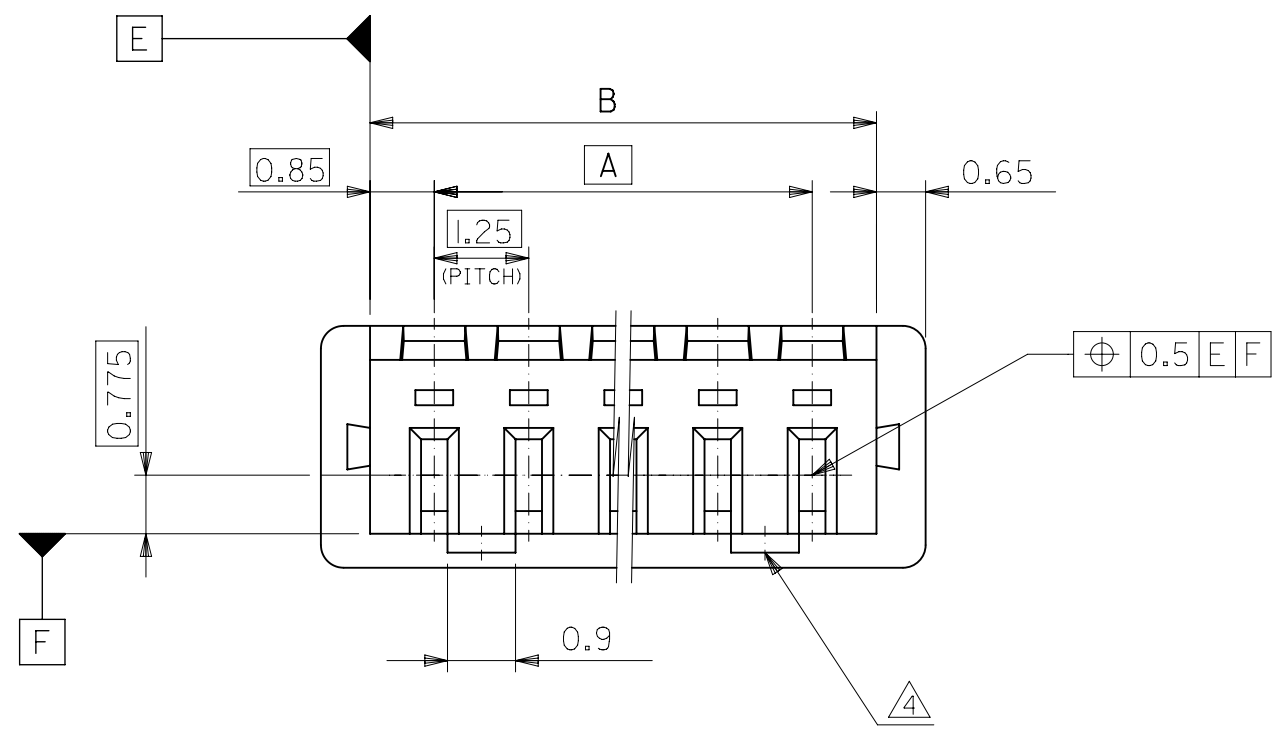
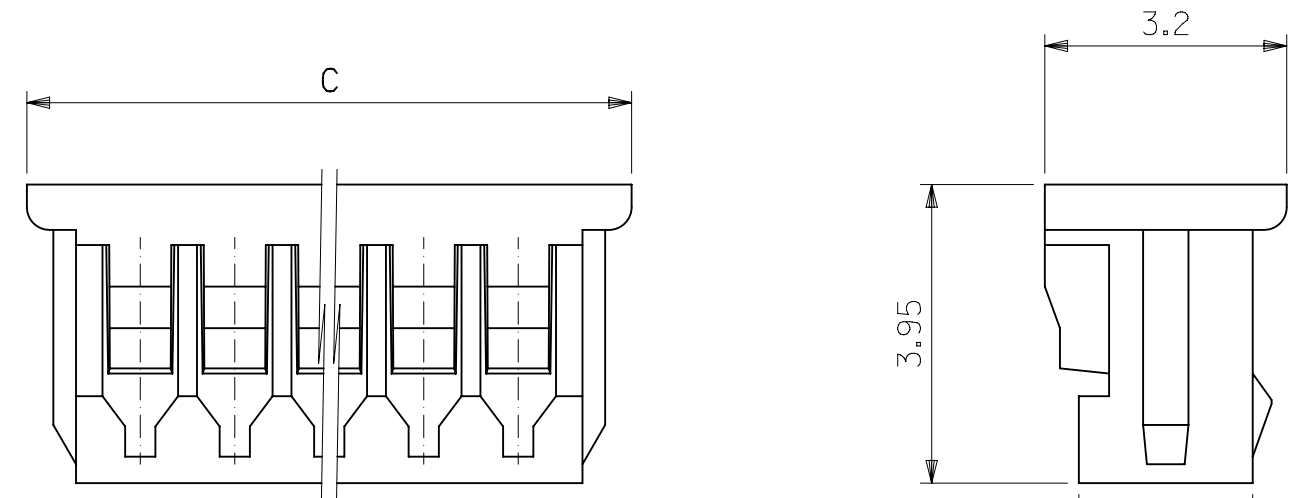
TRADE MARK



SECT. G-G

NOTES

- 1. MATERIAL : POLYBUTYLENE, UL94V-0, NON-GRASS FILLED.
- 2. APPLICABLE TERMINAL : 50058 SERIES
- 3. MATE WITH : 53047, 53048, 53261, 53398 SERIES
- 4. LOCKING WINDOW : ONE PLACE FOR 2 & 3 CKT. AND TWO PLACES FOR MORE THAN 3 CKT.



19.25	17.95	16.25	↑ 1430	↑ -1430	14
11.75	10.45	8.75	↑ 0830	↑ -0830	8
9.25	7.95	6.25	↑ 0630	↑ -0630	6
8.00	6.70	5.00	↓ 0530	↓ -0530	5
5.50	4.20	2.50	510210330	51021-0330	3
C	B	A	EDP NO.	ENG. NO.	CKTS.

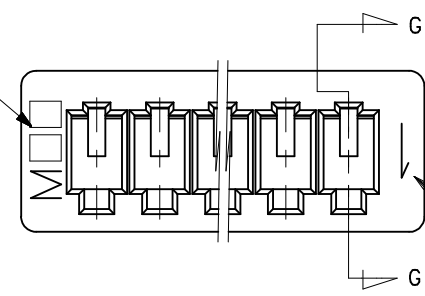
THIS DRAWING CONTAINS INFORMATION THAT IS PROPRIETARY TO MOLEX ELECTRONIC TECHNOLOGIES, LLC AND SHOULD NOT BE USED WITHOUT WRITTEN PERMISSION

DIMENSION UNITS	SCALE	CURRENT REV DESC: OBSOLETE PART NUMBERS AS PER PCN#509983	molex		
MM	10:1	AS PER PCN#509983			
GENERAL TOLERANCES (UNLESS SPECIFIED)			1.25 W/B CONN. HOUSING		
ANGLE	±3°	4 PLACES ±	PRODUCT CUSTOMER DRAWING		
30 OVER	±0.3	3 PLACES ±	DOCUMENT NUMBER		
10 OVER 30 UNDER	±0.25	2 PLACES ±	SD-51021-001		
10 UNDER	±0.2	1 PLACE ±	DOC TYPE DOC PART REVISION		
GENERAL TOLERANCES		0 PLACES ±	PSD 001 B1		
		ANGULAR TOL ± 0.5	MATERIAL NUMBER CUSTOMER SHEET NUMBER		
		DRAFT WHERE APPLICABLE MUST REMAIN WITHIN DIMENSIONS	SEE TABLE	GENERAL MARKET	1 OF 1

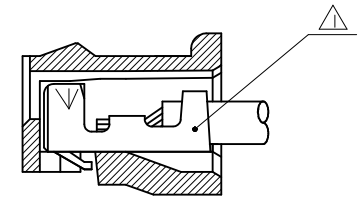
EC NO: 663026
 DRWN: SKANDB 2021/04/07
 CHK'D: GGA 2021/05/13
 APPR: GGA 2021/05/13
 INITIAL REVISION: 2003/08/06
 DRWN: KSKIM
 APPR: CWLEE

10 9 8 7 6 5 4 3 2 1

トレードマーク
TRADE MARK



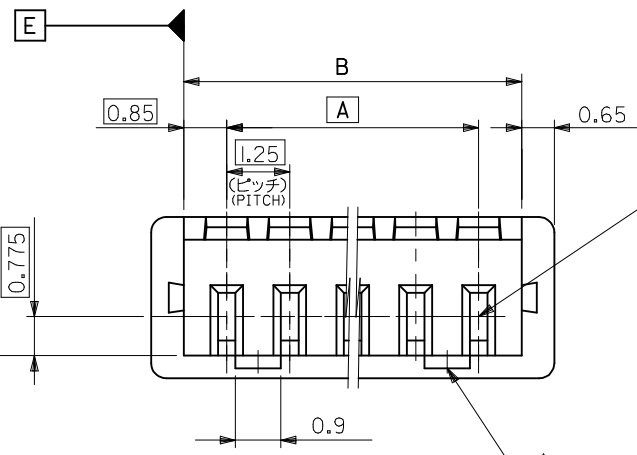
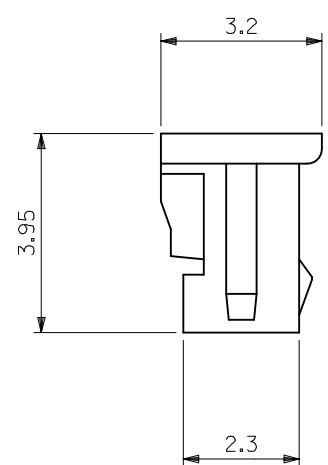
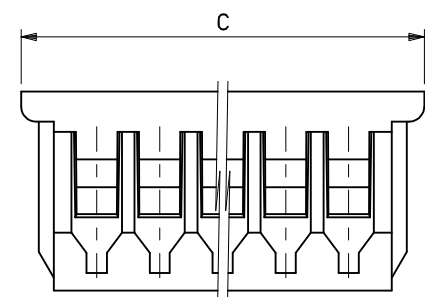
CKT.NO.1



SECT. G-G

注記 NOTES

- △ 適合ターミナル : 50058, 50079 シリーズ
APPLICABLE TERMINAL : 50058, 50079 SERIES
- 2 嵌合相手 : 53047, 53048, 53261, 53398 シリーズ
MATE WITH : 53047, 53048, 53261, 53398 SERIES
- △ ロックは、2, 3極は1ヶ, 4極以上は2ヶとする。
LOCKING WINDOW : ONE PLACE FOR 2 & 3 CKT.
AND TWO PLACES FOR MORE THAN 3 CKT.



⊕ 0.5 E F

MATERIAL
PBTP UL94V-0

20.5	19.2	17.5	51021-1500	15
19.25	17.95	16.25	-1400	14
18	16.7	15	-1300	13
16.75	15.45	13.75	-1200	12
15.5	14.2	12.5	-1100	11
14.25	12.95	11.25	-1000	10
13	11.7	10	-0900	9
11.75	10.45	8.75	-0800	8
10.5	9.2	7.5	-0700	7
9.25	7.95	6.25	-0600	6
8	6.7	5	-0500	5
6.75	5.45	3.75	-0400	4
5.5	4.2	2.5	-0300	3
4.25	2.95	1.25	51021-0200	2
C	B	A	ENG.NO.	極数 CKTS.

REVISED EC NO: J2014-1074 DRAWN: TYAJIMA01 2014/01/28 CHKD: KASAKAWA 2014/01/29 APPR: NUKITA 2014/01/30	GENERAL TOLERANCES (UNLESS SPECIFIED)		DIMENSION STYLE	SCALE	DESIGN UNITS	THIRD ANGLE PROJECTION
			MM ONLY	10:1	METRIC	
	DESCRIPTION	TITLE	1.25 W/B CONN. REC. HOUSING			
	10 UNDER ±0.20	TYAJIMA01 2014/01/28	molex			
10 OVER 30 UNDER ±0.25	CHECKED BY KASAKAWA 2014/01/29					
30 OVER ±0.30	APPROVED BY NUKITA 2014/01/30	MATERIAL NO.	DOCUMENT NO.	SHEET NO.		
ANGULAR ±3°		SEE TABLE	SD-51021-005	1 OF 1		
DRAFT WHERE APPLICABLE MUST REMAIN WITHIN DIMENSIONS	SIZE A3	THIS DRAWING CONTAINS INFORMATION THAT IS PROPRIETARY TO MOLEX INCORPORATED AND SHOULD NOT BE USED WITHOUT WRITTEN PERMISSION				

9 8 7 6 5 4 3 2 1

X-ON Electronics

Largest Supplier of Electrical and Electronic Components

Click to view similar products for [Headers & Wire Housings](#) category:

Click to view products by [Molex](#) manufacturer:

Other Similar products are found below :

[892-18-020-10-001101](#) [58102-G61-06LF](#) [582553-1](#) [0009485154](#) [009176003701906](#) [0050291907](#) [LY20-4P-DT1-P1E-BR](#) [02.125.8002.8](#)
[609-3404](#) [61062-3](#) [622-0430](#) [622-3653LF](#) [63453-116](#) [636-1030](#) [636-1427](#) [636-3427](#) [636-4007](#) [641938-9](#) [641991-4](#) [644827-2](#) [65817-010LF](#)
[65817-015LF](#) [65863-015LF](#) [66207-023LF](#) [67095-007LF](#) [67601157](#) [68648-049](#) [70.362.1628.0](#) [70-4210](#) [70-4226B](#) [70-4853B](#) [707-5020](#) [707-5028](#) [71.350.2428.0](#) [71918-208LF](#) [71961-016LF](#) [733-134](#) [733-162](#) [754199-000](#) [760-3052](#) [787-8014-00](#) [79531-3000](#) [FCN-360C032-B](#) [FCN-367T-T012/H](#) [FCN-723D010/2](#) [80.063.4001.1](#) [800-90-001-10-001000](#) [800-90-010-10-002000](#) [801-43-002-10-013000](#) [801-43-006-10-002000](#)