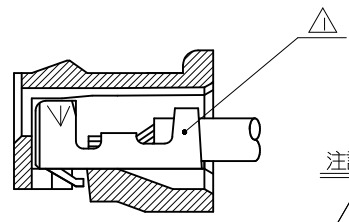
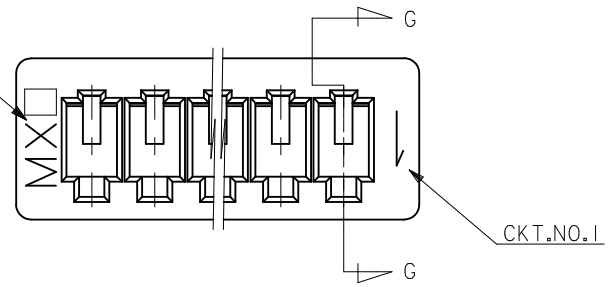


53261-****	WAFER ASSY	MODEL NO./MATERIAL NO.
50079-****	TERMINAL	
51021-****	HOUSING	

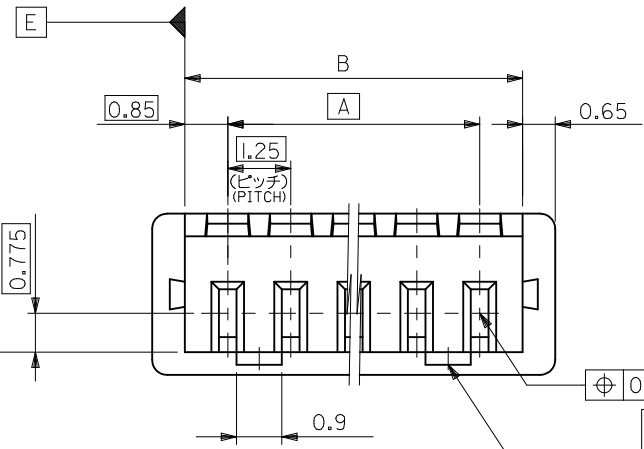
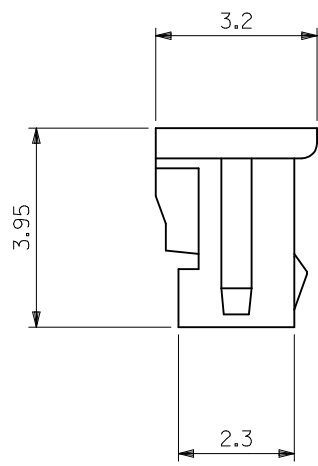
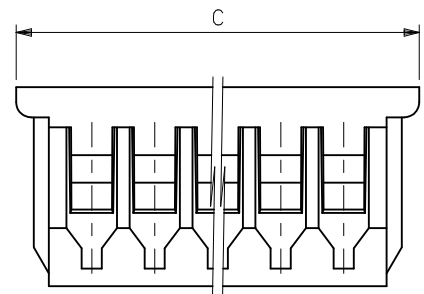
RELEASED EC NO: J2006-2426 DRWN: YA0YAGI CHKD: YMAEDA APPR: NUKITA 2006/02/07 2006/02/03 2006/02/03	DESCRIPTION	GENERAL TOLERANCES (UNLESS SPECIFIED)	DIMENSION STYLE	SCALE	DESIGN UNITS	THIRD ANGLE PROJECTION	
	REV		MM ONLY	---	METRIC	☉	
	0		10 UNDER ± ---	DRAWN BY	DATE	TITLE	
			10 OVER 30 UNDER ± ---	Y. A0YAGI	2006/01/30	1.25 W-T0-B CONN. 51021,53261 MATING CROSS SECTION	
			30 OVER ± ---	Y. MAEDA	2006/01/30		
		ANGULAR ± --- °	APPROVED BY	DATE	MOLEX INCORPORATED		
		DRAFT WHERE APPLICABLE MUST REMAIN WITHIN DIMENSIONS	N. UKITA	2006/01/30			
			MATERIAL NO.	DOCUMENT NO.	SHEET NO.		
			SEE CHART	SD-51021-002	1 OF 1		
			SIZE A3	THIS DRAWING CONTAINS INFORMATION THAT IS PROPRIETARY TO MOLEX INCORPORATED AND SHOULD NOT BE USED WITHOUT WRITTEN PERMISSION			

トレードマーク  
TRADE MARK



注記 NOTES

- △ 適合ターミナル : 50058, 50079 シリーズ  
APPLICABLE TERMINAL : 50058, 50079 SERIES
- 2 嵌合相手 : 53047, 53048, 53261, 53398 シリーズ  
MATE WITH : 53047, 53048, 53261, 53398 SERIES
- △ 3 ロックは、2, 3極は1ヶ, 4極以上は2ヶとする。  
LOCKING WINDOW : ONE PLACE FOR 2 & 3 CKT.  
AND TWO PLACES FOR MORE THAN 3 CKT.
- △ 4 ウエハーの色 COLOR OF WAFER  
ENG. NO. の下1桁に対応する。  
CORRESPONS TO LAST DIGIT OF ENG.NO.  
黒 BLACK : 51021-\*\*01  
赤 RED : 51021-\*\*02  
黄 YELLOW : 51021-\*\*03  
青 BLUE : 51021-\*\*04



23	21.7	20	51021 -170*	17
20.5	19.2	17.5	-150*	15
19.25	17.95	16.25	-140*	14
18	16.7	15	-130*	13
16.75	15.45	13.75	-120*	12
15.5	14.2	12.5	-110*	11
14.25	12.95	11.25	-100*	10
13	11.7	10	-090*	9
11.75	10.45	8.75	-080*	8
10.5	9.2	7.5	-070*	7
9.25	7.95	6.25	-060*	6
8	6.7	5	-050*	5
6.75	5.45	3.75	-040*	4
5.5	4.2	2.5	-030*	3
4.25	2.95	1.25	51021 -020*	2
C	B	A	ENG.NO. △	極数 CKTS.

MATERIAL  
PBTP UL94V-0

REVISED EC NO. : J2011-1763 2011/06/17 DRAWN:HORI 2011/06/29 CHKD:KASAKAWA 2011/06/30 APPR:NUKITA	DESCRIPTION REV	GENERAL TOLERANCES (UNLESS SPECIFIED)		DIMENSION STYLE MM ONLY		SCALE 10:1	DESIGN UNITS METRIC	THIRD ANGLE PROJECTION	
		10 UNDER	±0.2	DRAWN BY TASAKAWA	DATE '95/05/31	TITLE 1.25 W/ B CONN.REC.HS'G (DYED COLOR)			
		10 OVER 30 UNDER	±0.25	CHECKED BY HHIRAMOTO	DATE '95/05/31	APPROVED BY MFUKUSHIMA			
		30 OVER	±0.3	MATERIAL NO. SEE TABLE		DOCUMENT NO. SD-51021-004		SHEET NO. 1 OF 1	
		ANGULAR ±3 °		SIZE A3		THIS DRAWING CONTAINS INFORMATION THAT IS PROPRIETARY TO MOLEX INCORPORATED AND SHOULD NOT BE USED WITHOUT WRITTEN PERMISSION			
		DRAFT WHERE APPLICABLE MUST REMAIN WITHIN DIMENSIONS							

## X-ON Electronics

Largest Supplier of Electrical and Electronic Components

*Click to view similar products for [Headers & Wire Housings](#) category:*

*Click to view products by [Molex](#) manufacturer:*

Other Similar products are found below :

[892-18-020-10-001101](#) [58102-G61-06LF](#) [582553-1](#) [0009485154](#) [009176003701906](#) [0050291907](#) [LY20-4P-DT1-P1E-BR](#) [02.125.8002.8](#)  
[609-3404](#) [61062-3](#) [622-0430](#) [622-3653LF](#) [63453-116](#) [636-1030](#) [636-1427](#) [636-3427](#) [636-4007](#) [641938-9](#) [641991-4](#) [644827-2](#) [65817-010LF](#)  
[65817-015LF](#) [65863-015LF](#) [66207-023LF](#) [67095-007LF](#) [67601157](#) [68648-049](#) [70.362.1628.0](#) [70-4210](#) [70-4226B](#) [70-4853B](#) [707-5020](#) [707-5028](#) [71.350.2428.0](#) [71918-208LF](#) [71961-016LF](#) [733-134](#) [733-162](#) [754199-000](#) [760-3052](#) [787-8014-00](#) [79531-3000](#) [FCN-360C032-B](#) [FCN-367T-T012/H](#) [FCN-723D010/2](#) [80.063.4001.1](#) [800-90-001-10-001000](#) [800-90-010-10-002000](#) [801-43-002-10-013000](#) [801-43-006-10-002000](#)