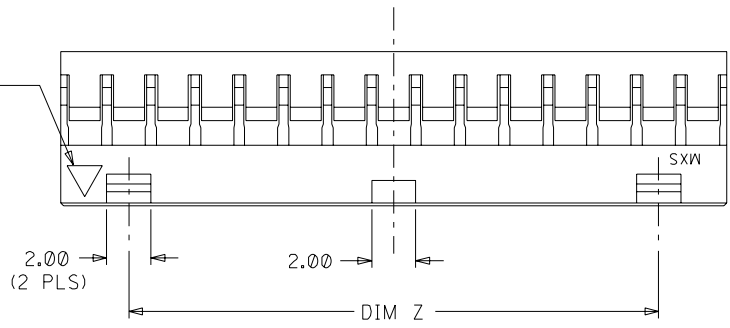


PART NO.	CKT SIZE	DIM X
51110-045*	4	2.00
51110-065*	6	4.00
51110-085*	8	6.00
51110-105*	10	8.00
51110-125*	12	10.00
51110-145*	14	12.00
51110-165*	16	14.00
51110-185*	18	16.00
51110-205*	20	18.00
51110-225*	22	20.00
51110-245*	24	22.00
51110-265*	26	24.00
51110-285*	28	26.00
51110-305*	30	28.00
51110-325*	32	30.00

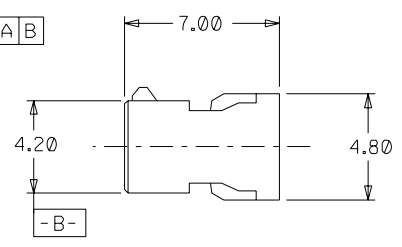
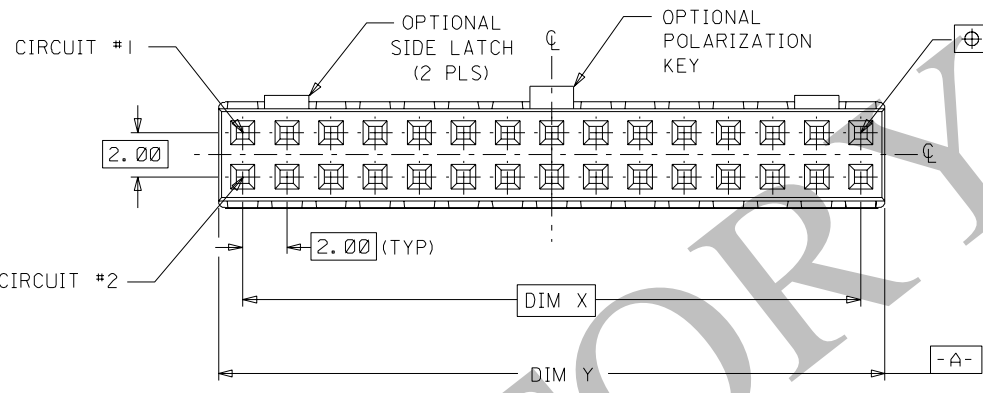
PLS REFER TO PART 51110-**60 FOR CENTER LATCH OPTION.

IST CIRCUIT IDENTIFICATION



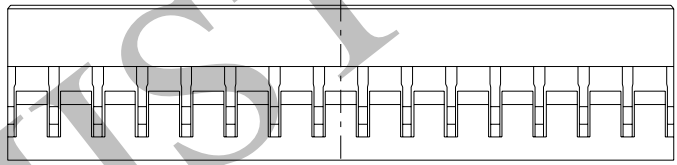
NOTES:

1. MATERIAL: GLASS-FILLED POLYESTER UL RATED 94V-0 COLOR: BLACK.
2. PART TO BE USED WITH CRIMP TERMINAL PART NUMBER 50394-8***.
3. APPLICABLE WIRE RANGE : AWG #24 - #30.
4. WIRE INSULATION RANGE : DIAMETER 1.40MM MAXIMUM.
5. 30 CKT SHOWN FOR ILLUSTRATION ONLY.



PART NUMBER LEGEND:

51110- * * 5 *
 CIRCUIT SIZE 0 - WITHOUT CENTER POLARIZATION KEY AND SIDE LATCH.
 1 - WITH CENTER POLARIZATION KEY AND SIDE LATCH.
 (14 TO 32 CIRCUITS ONLY)
 WITH CENTER POLAR. KEY ONLY.
 (8 TO 12 CIRCUITS ONLY)



EC NO. S2001-0365 DRWN: G.R. XIE 010613 CHK: APPR:	DESCRIPTION	MAJOR	QUALITY SYMBOLS	GENERAL TOLERANCES: (UNLESS SPECIFIED)	SCALE NTS	DESIGN UNITS <input checked="" type="checkbox"/> mm <input type="checkbox"/> INCH	THIRD ANGLE PROJECTION	DIMENSIONS:	
		CRITICAL	MAJOR					<input type="checkbox"/> mm <input type="checkbox"/> INCH	<input type="checkbox"/> mm <input type="checkbox"/> INCH
B3	REV	▽ = 0	▽ = 0	4 PLACES ±0.-- ±.	mm	INCH	DRAWN BY & DATE S.K.TOH 931026	TITLE: 2 MM GRID, WIRE-TO-BO CONNECTOR, CRIMP RECP HOUSING	
		▽ = 0	▽ = 0	3 PLACES ±0.-- ±.	mm	INCH			
				2 PLACES ±0.20 ±.			APPROVED BY & DATE JM CHAN 931026	MATERIAL NO. SEE NOTES	
				1 PLACE ±0.-- ±.			CAD FILENAME		
ANGULAR: ± 3 °									
THIS DRAWING CONTAINS INFORMATION THAT IS PROPRIETARY TO MOLEX INCORPORATED AND SHOULD NOT BE USED WITHOUT WRITTEN PERMISSION									

X-ON Electronics

Largest Supplier of Electrical and Electronic Components

Click to view similar products for [Headers & Wire Housings](#) category:

Click to view products by [Molex](#) manufacturer:

Other Similar products are found below :

[892-18-020-10-001101](#) [58102-G61-06LF](#) [582553-1](#) [0009485154](#) [009176003701906](#) [0050291907](#) [LY20-4P-DT1-P1E-BR](#) [02.125.8002.8](#)
[609-3404](#) [61062-3](#) [622-0430](#) [622-3653LF](#) [63453-116](#) [636-1030](#) [636-1427](#) [636-3427](#) [636-4007](#) [641938-9](#) [641991-4](#) [644827-2](#) [65817-010LF](#)
[65817-015LF](#) [65863-015LF](#) [66207-023LF](#) [67095-007LF](#) [67601157](#) [68648-049](#) [70.362.1628.0](#) [70-4210](#) [70-4226B](#) [70-4853B](#) [707-5020](#) [707-](#)
[5028](#) [71.350.2428.0](#) [71918-208LF](#) [71961-016LF](#) [733-134](#) [733-162](#) [754199-000](#) [760-3052](#) [787-8014-00](#) [79531-3000](#) [FCN-360C032-B](#) [FCN-](#)
[367T-T012/H](#) [FCN-723D010/2](#) [80.063.4001.1](#) [800-90-001-10-001000](#) [800-90-010-10-002000](#) [801-43-002-10-013000](#) [801-43-006-10-002000](#)