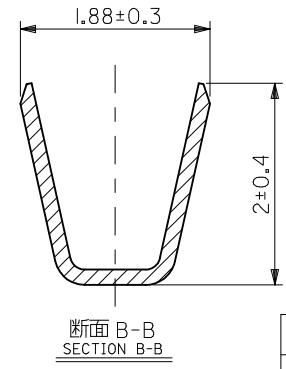
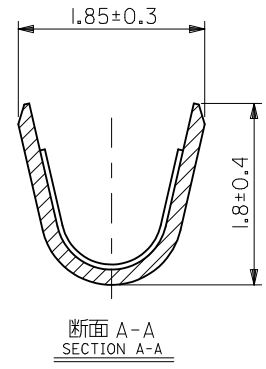
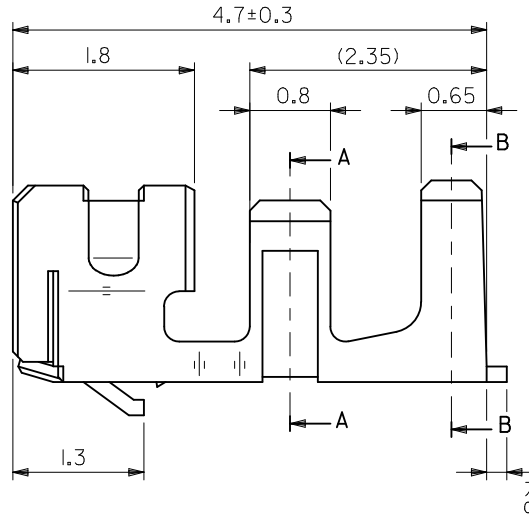
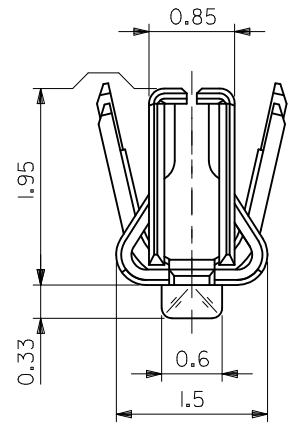


注記  
NOTES

1. 材質：リン青銅、t = 0.152  
MATERIAL : PHOSPHOR BRONZE, t = 0.152
2. メッキ仕様  
PLATING  
金メッキ : 0.1µm MIN.  
GOLD : 0.1µm MIN.  
ニッケルメッキ : 1.5µm MIN. (下地メッキ)  
NICKEL : 1.5µm MIN. (UNDER PLATING)
3. 適用ハウジング : 54992-09\*\*, 502351-\*\*00  
APPLICABLE HOUSING : 54992-09\*\*, 502351-\*\*00
4. ELV 及び RoHS 適合品  
ELV AND RoHS COMPLIANT.



バラ状 LOOSE	56161-8181
連鎖状 CHAIN	56161-8081
端子形状 FORM	オーダー番号 ORDER No.

CONNECTOR SERIES No. 56161-8\*81

材料 MATERIAL	注記参照 SEE NOTES
仕上げ FINISH	注記参照 SEE NOTES
適用電線範囲 WIRE RANGE	AWG #22~#26
被服外径範囲 INSURATION RANGE	φ1.4 MAX.

REVISED EC NO.: J2011-0785 DRWK:KAWASHIO 2010/12/08 CHKD:KASAKAWA 2010/12/09 APPR:NUKITA 2010/12/09 A	DESCRIPTION	GENERAL TOLERANCES (UNLESS SPECIFIED)
	REV	10 UNDER ±0.2
		10 OVER 30 UNDER ±0.25
		30 OVER ±0.3
		ANGULAR ±3 °
		DRAFT WHERE APPLICABLE MUST REMAIN WITHIN DIMENSIONS

DIMENSION STYLE MM ONLY	
DRAWN BY KKOBAYASHI	DATE 2001/10/05
CHECKED BY NMATSUURA	DATE 2001/10/05
APPROVED BY YOITO	DATE 2001/10/05
MATERIAL NO. SEE CHART	
SIZE A3	

SCALE 20:1	DESIGN UNITS METRIC	THIRD ANGLE PROJECTION
TITLE SMC (SERVO MOTOR ENCODER CONN.) CRIMP RECEPTACLE		
MOLEX INCORPORATED		
MATERIAL NO. SD-56161-002	DOCUMENT NO.	SHEET NO. 1 OF 1
THIS DRAWING CONTAINS INFORMATION THAT IS PROPRIETARY TO MOLEX INCORPORATED AND SHOULD NOT BE USED WITHOUT WRITTEN PERMISSION		

## X-ON Electronics

Largest Supplier of Electrical and Electronic Components

*Click to view similar products for [Headers & Wire Housings](#) category:*

*Click to view products by [Molex](#) manufacturer:*

Other Similar products are found below :

[95000-104TRLF](#) [10135584-644402LF](#) [DF62W-EP2022PCA](#) [95000-106TRLF](#) [DF62W-2022SCA](#) [DF62W-EP2022PC](#) [2203348](#) [DF62W-2022SC](#) [1084018](#) [1029039](#) [1084017](#) [802-10-012-10-002000](#) [1112640](#) [1112639](#) [891-007-9SS-BST1T](#) [000-34000](#) [0008550134](#) [0009482033](#) [0009507031](#) [57102-F02-18ULF](#) [57102-S06-03LF](#) [57202-S52-04LF](#) [PCN6-15S-2.5E](#) [0039019024](#) [58102-G61-06LF](#) [582553-1](#) [0009485154](#) [0009508121](#) [009176003701906](#) [0022285053](#) [0050291907](#) [018731A](#) [LY20-4P-DT1-P1E-BR](#) [02.125.8002.8](#) [60101931](#) [60598-1 \(Cut Strip\)](#) [M1625-3R/100](#) [61062-3](#) [61082-181009](#) [CSU011177004](#) [636-1427](#) [638009-1](#) [641938-9](#) [641991-4](#) [644168-1](#) [644827-2](#) [647662-1](#) [65039-019ELF](#) [65692-001LF](#) [65781-018](#)