

PLEASE CHECK WWW.MOLEX.COM FOR LATEST PART INFORMATION

Part Number: [0622030140](#)
Status: **Active**
Overview: [Application Tooling](#)
Description: Insertion Tool

Documents:

[RoHS Certificate of Compliance \(PDF\)](#)

General

Product Family	Application Tooling
Series	207123
Comments	Used with medium connectors
Function	Insertion
Geographic Area	Global
Level of Automation	Manual
More Detailed Tech Information	applicationtooling@molex.com
Overview	Application Tooling
Product Name	N/A
Tool Type	Press-Fit Insertion Tool
UPC	884982354821
Warranty Disclaimer	CAUTION: Molex tooling crimp specifications are valid only when used with Molex terminals and tooling manufactured by Molex and sold by Molex or authorized distributors ("Molex Tooling"). When using tooling other than Molex Tooling with Molex specific connector systems listed in our ATS documents, the Molex tooling qualification does not apply and the responsibility for full qualification of the connector system is that of the customer. Molex accepts no liability for connector performance or tooling support where tooling other than Molex Tooling is used or where Molex Tooling is modified.

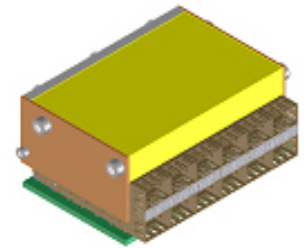
Physical

Net Weight 159.810/g

Material Info

Reference - Drawing Numbers

Application Tooling Documents [ATS-622030140](#)



Series image - Reference only

EU ELV

Not Relevant

EU RoHS

Not Reviewed

REACH SVHC

Not Reviewed

Halogen-Free

Status

Not Relevant

For more information, please visit [Contact US](#)

China ROHS

Not Relevant

ELV

Not Relevant

RoHS Phthalates

Not Reviewed

Search Parts in this Series

[207123 Series](#)

Application Tooling | **FAQ**
Description | **Product #**

zSFP+ Stacked Ganged Assembly with Elastomeric Gasket, 2-by-1 No Light Pipes, 40 Circuits	1700711001
zSFP+ Stacked Ganged Assembly with Elastomeric Gasket, 2-by-1 With 4 Light Pipes, 40 Circuits	1700711011
zSFP+ Stacked Ganged Assembly with Elastomeric Gasket, 2-by-1 with Inner Light Pipes, 40 Circuits	1700711012
zSFP+ Stacked Ganged Assembly with Elastomeric Gasket, 2-by-1 with	1700711013

Outer Down/Up Light
Pipes, 40 Circuits

Small Form-factor 754625001
Pluggable (SFP)

Stacked 2-by-1 Multi-
Port Connector with
Press-fit PC Tails, 40
Circuits, Lead-Free

Small Form-factor 756405001
Pluggable (SFP)

Stacked 2-by-1 Multi-
Port Connector with
4 Lightpipes, with
Press-fit PC Tails, 40
Circuits, Lead-Free

Small Form-factor 756405002
Pluggable (SFP)

Stacked 2-by-1 Multi-
Port Connector with
2 Inner Lightpipes,
with Press-fit PC
Tails, 40 Circuits,
Lead-Free

Small Form-factor 756405003
Pluggable (SFP)

Stacked 2-by-1 Multi-
Port Connector with
2 Outer Lightpipes,
with Press-fit PC
Tails, 40 Circuits,
Lead-Free

Small Form-factor 760445001
Pluggable Plus (SFP

+) Stacked 2-by-1
Multi-Port Connector
with 4 Lightpipe
Ports, EMI Metal
Gasket, 40 Circuits,
Tin (Sn) Tails

Small Form-factor 760445002
Pluggable Plus (SFP

+) Stacked 2-by-1
Multi-Port Connector
with 2 Inner Lightpipe
Ports, EMI Metal
Gasket, 40 Circuits,
Tin (Sn) Tails

Small Form-factor 760445003
Pluggable Plus

(SFP+) Stacked
2-by-1 Multi-Port
Connector with 2
Outer Lightpipe
Ports, EMI Metal
Gasket, 40 Circuits,
Tin (Sn) Tails

Small Form-factor 760645001
Pluggable Plus (SFP

+) Stacked 2-by-1
Multi-Port Press Fit
Connector without
Lightpipe Ports, EMI
Metal Gasket, 40
Circuits, Tin (Sn)
Tails

Small Form-factor 760905001
Pluggable Plus (SFP
+) Stacked 2-by-1
Multi-Port Connector
with 4 Lightpipe
Ports, Elastomeric
Gasket, 40 Circuits,
Tin (Sn) Tails

Small Form-factor 760905002
Pluggable Plus (SFP
+) Stacked 2-by-1
Multi-Port Connector
with 2 Inner Lightpipe
Ports, Elastomeric
Gasket, 40 Circuits,
Tin (Sn) Tails

Small Form-factor 760905003
Pluggable Plus (SFP
+) Stacked 2-by-1
Multi-Port Press Fit
Connector with Outer
2 Lightpipe Ports,
Elastomeric Gasket,
40 Circuits, Tin (Sn)
Tails

This document was generated on 02/26/2021

PLEASE CHECK WWW.MOLEX.COM FOR LATEST PART INFORMATION

X-ON Electronics

Largest Supplier of Electrical and Electronic Components

Click to view similar products for [Other Tools](#) category:

Click to view products by [Molex](#) manufacturer:

Other Similar products are found below :

[CR-0AFL4--332K](#) [568681-1](#) [5800-0090](#) [58061-1](#) [59065-5](#) [59085](#) [00-8273-RDPP](#) [00-8729-WHPP](#) [593033](#) [593072](#) [593564100](#) [593575](#)
[593593](#) [011349-000](#) [CRCW08052740FRT1](#) [LUC-012S070DSM](#) [LUC-018S070DSP](#) [LUC-024S105DSP](#) [599-2021-3-NME](#) [599-JJ-2021-03](#)
[00-5080-YWPP](#) [00-9089-RDPP](#) [00-9300-RDPP](#) [CRCW2010331JR02](#) [601-JJ-06](#) [601-SPB](#) [601YSY](#) [602-JJ-03](#) [602SPB](#) [603-JJ-07-FP](#) [603-](#)
[JJY-04](#) [M15570-25](#) [CRTN1013](#) [CS16](#) [6-1579014-0](#) [CSB3](#) [6203](#) [62200-5709](#) [6240-1](#) [M43435](#) [TY 2](#) [SZ 3](#) [FIN B](#) [BLK](#) [M-5Z](#) [M6816](#) [M7298](#)
[M7456](#) [M7976](#) [660-29ABT1](#) [662508-1](#) [CVHD-950X-93.333](#) [CW104-01X](#) [671-GP-04-KT39-73207](#)