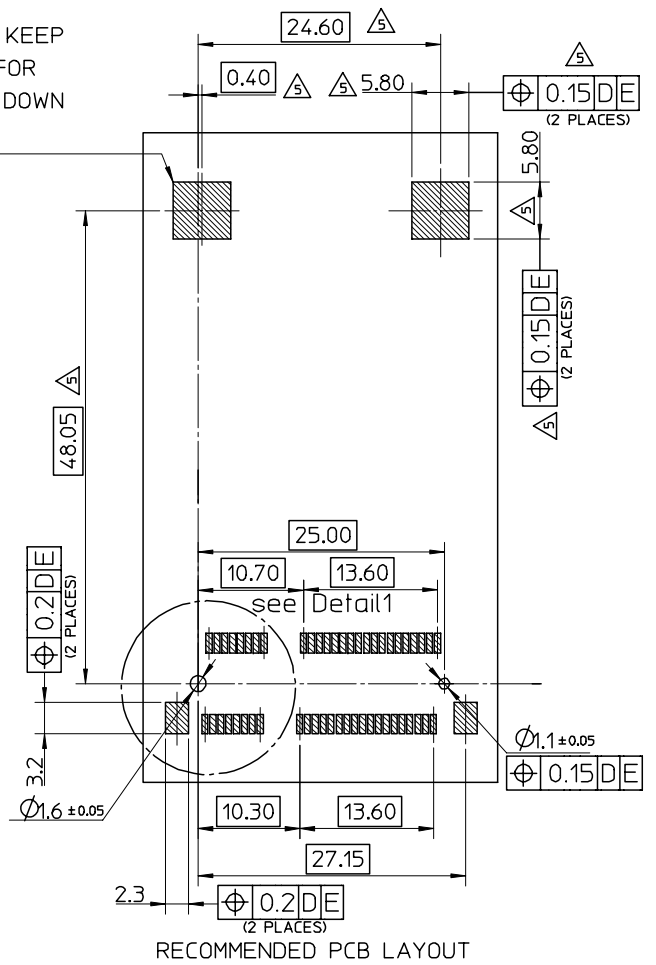
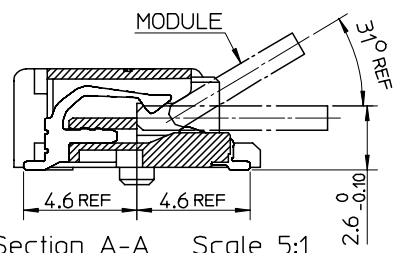


COMPONENT KEEP OUT AREA FOR CARD HOLD DOWN SOLUTION



- NOTES:
- MATERIALS:  
HOUSING:LCP,COLOR:BLACK, UL94V-0.  
CONTACT: PHOSPHOR BRONZE NAIL:BRASS
  - FINISH  
CONTACT:SELECTIVE GOLD IN CONTACT AND SOLDER AREA.  
UNDERPLATED:NICKEL OVERALL  
NAIL:TIN IN SOLDER AREA.  
UNDERPLATED:NICKEL OVERALL.
  - THE MODULE CARD REFERENCE MINI PCI EXPRESS CARD ELECTROMECHANICAL SPECIFICATION.
  - DATUM D IS THE TOP SURFACE OF PCB.
  - IF THE CONNECTOR USED WITH 48099-00\*\*,LATCH SIDE RECOMMENDED PCB LAYOUT REFERS TO SD-48099-0\*\*.
  - PART 67910\*\*\*\* COMPLIANT TO ROHS DIRECTIVE 2002/95/EC AND ELV DIRECTIVE 2000/53/EC.

679100002	10 MICROINCH GOLD
679101002	GOLD FLASH



RELEASED EC NO: SH2007-0020 2006/08/02 DRWN:DHU CHKD:HARVEY APPR: JNCHEN 2006/08/02 2006/08/09	DESCRIPTION	QUALITY SYMBOLS	GENERAL TOLERANCES (UNLESS SPECIFIED)	DIMENSION STYLE	SCALE	DESIGN UNITS	THIRD ANGLE PROJECTION													
		$\nabla=0$ $\triangle=0$	<table border="1"> <tr> <th></th> <th>mm</th> <th>INCH</th> </tr> <tr> <td>4 PLACES</td> <td>± ---</td> <td>± ---</td> </tr> <tr> <td>3 PLACES</td> <td>± ---</td> <td>± ---</td> </tr> <tr> <td>2 PLACES</td> <td>± 0.25</td> <td>± ---</td> </tr> <tr> <td>1 PLACE</td> <td>± 0.25</td> <td>± ---</td> </tr> </table>		mm	INCH	4 PLACES	± ---	± ---	3 PLACES	± ---	± ---	2 PLACES	± 0.25	± ---	1 PLACE	± 0.25	± ---	MM ONLY	2:1
	mm	INCH																		
4 PLACES	± ---	± ---																		
3 PLACES	± ---	± ---																		
2 PLACES	± 0.25	± ---																		
1 PLACE	± 0.25	± ---																		
			ANGULAR ± 3°	DRAWN BY J. CHIANG 2003/02/25	DATE	TITLE														
				CHECKED BY C. WILSON 2003/03/06	DATE	MINI PCI EXPRESS CONN. 0.8 MM PITCH 52CIRCUIT 4.0MM H														
				APPROVED BY L. ERICK 2003/03/06	DATE	MOLEX INCORPORATED														
				MATERIAL NO.	DOCUMENT NO.	SD-67910-001	SHEET NO. 1 OF 2													
			DRAFT WHERE APPLICABLE MUST REMAIN WITHIN DIMENSIONS	SEE TABLE																

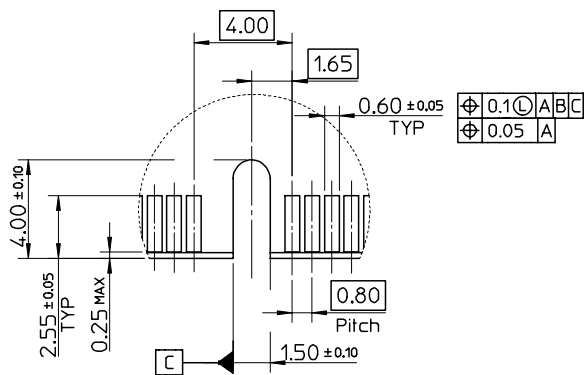
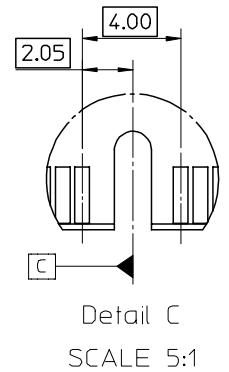
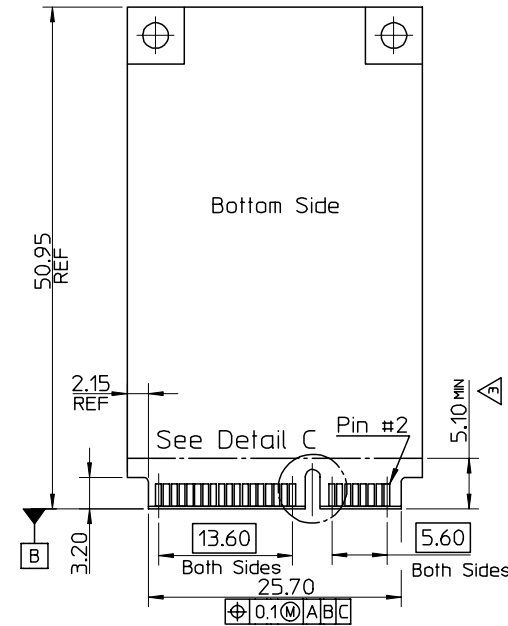
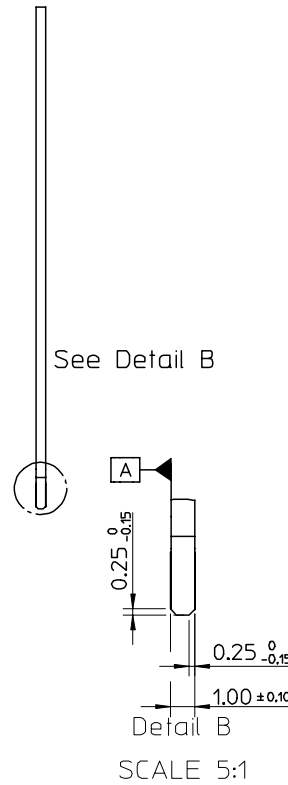
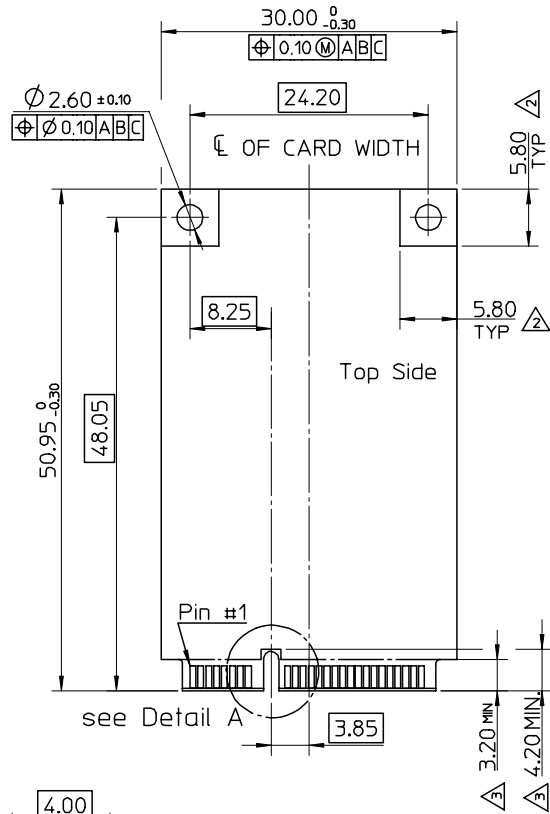
10 9 8 7 6 5 4 3 2 1

NOTES;

1. PIN NUMBERING REFERENCE:

ODD PINS - TOP SIDE  
EVEN PINS - BOTTOM SIDE

- △ COMPONENT AND ROUTING (ALL LAYERS)  
KEEP OUT AREA FOR HOLD DOWN SOLUTIONS.
- △ COMPONENT KEEP OUT AREA FOR CONNECTOR.



Detail A  
Scale 5:1

RELEASED EC NO: SH2007-0020 2006/08/02 DRWN:DHU CHKD:HARVEY 2006/08/02 APPR: JNCHEM 2006/08/09	QUALITY SYMBOLS ▽=0 △=0	GENERAL TOLERANCES (UNLESS SPECIFIED)		DIMENSION STYLE MM ONLY	SCALE 1:1	DESIGN UNITS METRIC	THIRD ANGLE PROJECTION
		4 PLACES ± --- ± ---	3 PLACES ± --- ± ---	2 PLACES ± 0.25 ± ---	1 PLACE ± 0.25 ± ---	ANGULAR ± 3 °	DRAWN BY J. CHIANG 2003/02/25
REV C	DESCRIPTION	DRAFT WHERE APPLICABLE MUST REMAIN WITHIN DIMENSIONS		SEE TABLE	APPROVED BY L. ERICK 2003/03/06	DATE 2003/03/06	MOLEX INCORPORATED
		SIZE A3	THIS DRAWING CONTAINS INFORMATION THAT IS PROPRIETARY TO MOLEX INCORPORATED AND SHOULD NOT BE USED WITHOUT WRITTEN PERMISSION		MATERIAL NO.	DOCUMENT NO. SD-67910-001	SHEET NO. 2 OF 2

9 8 7 6 5 4 3 2 1

## X-ON Electronics

Largest Supplier of Electrical and Electronic Components

*Click to view similar products for [PCI Express/PCI Connectors](#) category:*

*Click to view products by [Molex](#) manufacturer:*

Other Similar products are found below :

[UEX220-3U](#) [UEX220-6U](#) [0877159203](#) [10039755-10110TLF](#) [10039755-10211TLF](#) [10025026-10003PLF](#) [10125756-A41010LF](#) [10125756-980000LF](#) [1-1871239-2](#) [2170560-2](#) [10082378-11003TLF](#) [10125756-980000LF](#) [1775861-2](#) [10039755-10111TLF](#) [EB220-3U](#)  
[WD2M144WB2R300](#) [10061913-120PLF](#) [10108777-10002WLF](#) [GPCP146400111HR](#) [10144667-112Y0LF](#) [10144667-113Y0LF](#) [205058-1001](#)  
[GPCP446200120HR](#) [GPCP245400111HR](#) [10061913-102PLF](#) [10082378-10000TLF](#) [10082378-10001TLF](#) [87715-9256](#) [MDT580M03001](#)  
[0877159107](#) [205058-1003](#) [MDT580M01001](#) [10018783-11000MLF](#) [10061913-103BLF](#) [10145445-10003MLF](#) [PSASF2130311TR](#) [10147430-113T0LF](#) [10146070-113Y0LF](#) [MDT670M01005](#) [10108777-10200MLF](#) [MDT420M01002](#) [PSASF3130211TR](#) [PSASF4130051TR](#)  
[PSASM2130412TR](#) [PSASM2130391TR](#) [10139595-111T0LF](#) [10139595-110T0LF](#) [PSASF3130131TR](#) [0745400501](#) [7-1734774-7](#)