

PLEASE CHECK WWW.MOLEX.COM FOR LATEST PART INFORMATION

Part Number: [0730993012](#)
Status: **Active**
Overview: CyClone Panel-to-Panel Connector System
Description: 2.54mm CyClone Drawer Connector, Blind Mating, Hermaphroditic, 12 Circuits

Documents:

| | |
|---|---|
| 3D Model | Packaging Specification PK-70873-1000 (PDF) |
| Drawing (PDF) | Test Summary TS-73099-0001-001 (PDF) |
| Product Specification PS-73099-9999-001 (PDF) | RoHS Certificate of Compliance (PDF) |

Agency Certification

| | |
|-----|---------|
| CSA | LR19980 |
| UL | E29179 |

General

| | |
|----------------|---|
| Product Family | Accessories |
| Series | 73099 |
| Comments | 10,000 mating cycles max., 10,000 mating cycles max. |
| Component Type | Adapter, Drawer Connector |
| Overview | CyClone Panel-to-Panel Connector System |
| Product Name | CyClone, SL |
| UPC | 889056294133 |

Physical

| | |
|--------------------------------|------------------|
| Circuits (Loaded) | 12 |
| Circuits (maximum) | 12 |
| Color - Resin | Black |
| Flammability | 94V-0 |
| Gender | Hermaphroditic |
| Lock to Mating Part | Yes |
| Material - Metal | Beryllium Copper |
| Material - Plating Mating | Gold |
| Material - Plating Termination | Gold |
| Material - Resin | Polyester |
| Net Weight | 9.132/g |
| Number of Rows | 1 |
| Packaging Type | Tray |
| Plating min - Mating | 1.270µm |
| Plating min - Termination | 0.381µm |
| Polarized to Mating Part | Yes |
| Temperature Range - Operating | -40° to +105°C |

Electrical

| | |
|-------------------------------|------|
| Current - Maximum per Contact | 2.0A |
|-------------------------------|------|

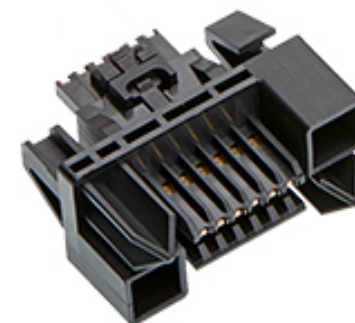
Solder Process Data

| | |
|-----------------------------|-----|
| Lead-freeProcess Capability | N/A |
|-----------------------------|-----|

Material Info

Reference - Drawing Numbers

| | |
|-------------------------|-------------------|
| Packaging Specification | PK-70873-1000 |
| Product Specification | PS-73099-9999-001 |
| Sales Drawing | SD-73099-3000-000 |
| Test Summary | TS-73099-0001-001 |



Series image - Reference only

EU ELV

Not Relevant

EU RoHS

Compliant

REACH SVHC

Not Contained Per -
ED/71/2019 (16 July
2019)

Halogen-Free

Status

Not Low-Halogen

For more information, please visit [Contact US](#)

China ROHS

ELV

RoHS Phthalates

China RoHS

Green Image

Not Relevant

Not Contained

Search Parts in this Series

[73099 Series](#)

Use With

[70400](#) Version G Connector, [70066](#) Version G Housing, [70430](#) Version G Receptacle

PLEASE CHECK WWW.MOLEX.COM FOR LATEST PART INFORMATION

X-ON Electronics

Largest Supplier of Electrical and Electronic Components

Click to view similar products for [Headers & Wire Housings](#) category:

Click to view products by [Molex](#) manufacturer:

Other Similar products are found below :

[892-18-020-10-001101](#) [58102-G61-06LF](#) [582553-1](#) [0009485154](#) [009176003701906](#) [0050291907](#) [LY20-4P-DT1-P1E-BR](#) [02.125.8002.8](#)
[609-3404](#) [61062-3](#) [622-0430](#) [622-3653LF](#) [63453-116](#) [636-1030](#) [636-1427](#) [636-3427](#) [636-4007](#) [641938-9](#) [641991-4](#) [644827-2](#) [65817-010LF](#)
[65817-015LF](#) [65863-015LF](#) [66207-023LF](#) [67095-007LF](#) [67601157](#) [68648-049](#) [70.362.1628.0](#) [70-4210](#) [70-4226B](#) [70-4853B](#) [707-5020](#) [707-5028](#) [71.350.2428.0](#) [71918-208LF](#) [71961-016LF](#) [733-134](#) [733-162](#) [754199-000](#) [760-3052](#) [787-8014-00](#) [79531-3000](#) [FCN-360C032-B](#) [FCN-367T-T012/H](#) [FCN-723D010/2](#) [80.063.4001.1](#) [800-90-001-10-001000](#) [800-90-010-10-002000](#) [801-43-002-10-013000](#) [801-43-006-10-002000](#)