

FEATURES AND SPECIFICATIONS

Features and Benefits

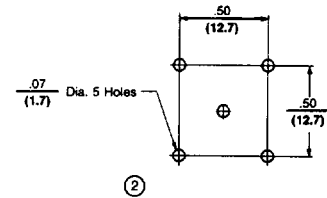
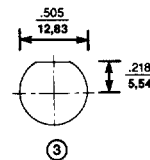
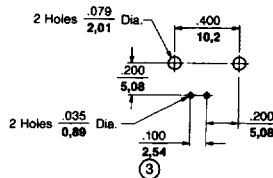
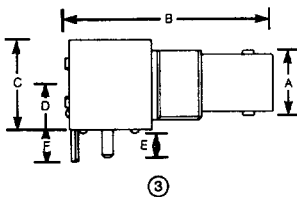
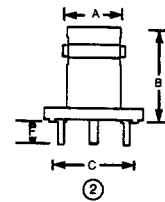
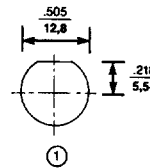
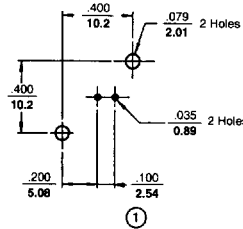
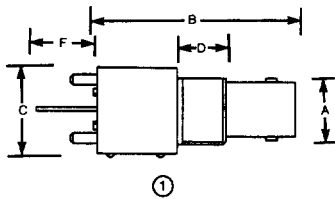
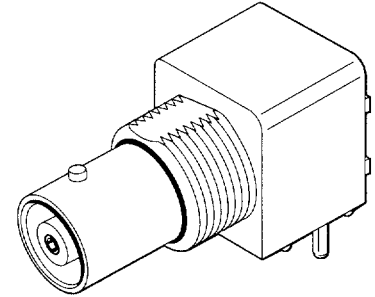
- MIL-C-39012 compatible
- Quick connect-disconnect
- 50 and 75Ω versions available

See BNC and TNC Specifications Table on Page R-2
For More Information

molex® RF Coaxial Connectors BNC Series

73131/73133/73137/ 73138

PCB Jack Receptacle Vertical and Right Angle



ORDERING INFORMATION AND DIMENSIONS

Order No.	Contact Plating	Diagram	Style	Dimension						Features	Dielectric Materials
				A	B	C	D	E	F		
73131-5003	Gold	1	Vertical	11.00 (.433)	35.44 (1.395)	15.90 (.625)	8.64 (.340)	4.10 (.161)	10.30 (.405)	Black Molded Body	Polypropylene
73131-5005	Tin	1	Vertical	11.00 (.433)	35.44 (1.395)	15.90 (.625)	8.64 (.340)	4.10 (.161)	10.30 (.405)	Black Molded Body	Polypropylene
73133-5001	Silver	2	Vertical	11.00 (.433)	16.80 (.661)	17.40 (.677)			3.90 (.154)	Brass Body	Teflon*
73133-5003	Gold	2	Vertical	11.10 (.437)	16.80 (.661)	17.40 (.677)			3.90 (.154)	Brass Body	Teflon
73137-5003	Gold	3	Right Angle	11.00 (.433)	35.18 (1.385)	13.20 (.519)	6.91 (.272)	4.10 (.161)	4.75 (.187)	Black Molded Body Low Profile	Polypropylene
73137-5005	Tin	3	Right Angle	11.00 (.433)	35.18 (1.385)	13.20 (.519)	6.91 (.272)	4.10 (.161)	4.75 (.187)	Black Molded Body Low Profile	Polypropylene
73137-5013	Gold	3	Right Angle	11.00 (.433)	35.18 (1.385)	13.20 (.519)	6.91 (.272)	4.10 (.161)	4.75 (.187)	White Molded Body Low Profile	Polypropylene
73137-5015	Tin	3	Right Angle	11.00 (.433)	35.18 (1.385)	13.20 (.519)	6.91 (.272)	4.10 (.161)	4.75 (.187)	White Molded Body Low Profile	Polypropylene
73138-5003	Gold	3	Right Angle	11.00 (.433)	35.44 (1.395)	15.90 (.625)	8.59 (.338)	4.10 (.161)	4.75 (.187)	Black Molded Body	Polypropylene
73138-5005	Tin	3	Right Angle	11.00 (.433)	35.44 (1.395)	15.90 (.625)	8.59 (.338)	4.10 (.161)	4.75 (.187)	Black Molded Body	Polypropylene
73138-5013	Gold	3	Right Angle	11.00 (.433)	35.44 (1.395)	15.90 (.625)	8.59 (.338)	4.10 (.161)	4.75 (.187)	White Molded Body	Polypropylene
73138-5015	Tin	3	Right Angle	11.00 (.433)	35.44 (1.395)	15.90 (.625)	8.59 (.338)	4.10 (.161)	4.75 (.187)	White Molded Body	Polypropylene
73138-5033	Gold	3	Right Angle	11.00 (.433)	35.44 (1.395)	15.90 (.625)	8.59 (.338)	4.10 (.161)	4.75 (.187)	All Die-Cast Body	Polypropylene

* Teflon is a registered trademark of E.I. DuPont de Nemours and Company

Note: Nut and washer are included with each connector

X-ON Electronics

Largest Supplier of Electrical and Electronic Components

Click to view similar products for [RF Connectors](#) / [Coaxial Connectors](#) category:

Click to view products by [Molex](#) manufacturer:

Other Similar products are found below :

[8915-1511-000](#) [89674-0827](#) [6001-7071-019](#) [6002-7051-003](#) [6002-7551-202](#) [6059674-1](#) [619550-1](#) [630059-000](#) [M39030/3-01N](#) [6500-7071-046](#) [6769](#) [CX050L2AQ](#) [7002-1542-011](#) [7004-1512-000](#) [7009-1511-004](#) [7010-1511-000](#) [7029-1511-060](#) [7101-1541-010](#) [7101-1571-002](#) [7105-1521-002](#) [7145-1521-002](#) [7203-1571-003](#) [7209-1511-011](#) [7210-1511-015](#) [7210-1511-019](#) [73137-5015](#) [73216-2241](#) [73404-2300](#) [7405-1521-005](#) [7405-1521-802](#) [8527](#) [8547](#) [FS11V](#) [8808-1511-001](#) [9049-9513-000](#) [9074-9513-000](#) [9101-9573-002](#) [910A205F](#) [9130-9573-002](#) [PL11SC-026](#) [PL375-33](#) [PL40-5](#) [PL74C-221](#) [PL75MC-217](#) [PL803-7](#) [980-8666-005](#) [1200690078](#) [1-201144-1](#) [R107003010W](#) [R110A172100](#)