

MATERIALS AND FINISHES

BODY, COUPLING NUT SEE TABLE
PLATED SEE TABLE

CONTACT BERYLLIUM COPPER
PLATED GOLD

INSULATOR TEFLON

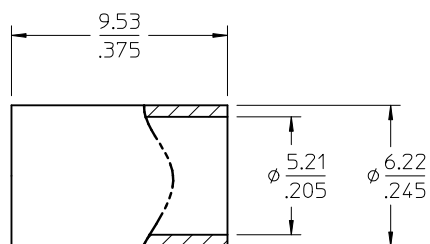
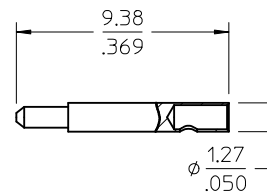
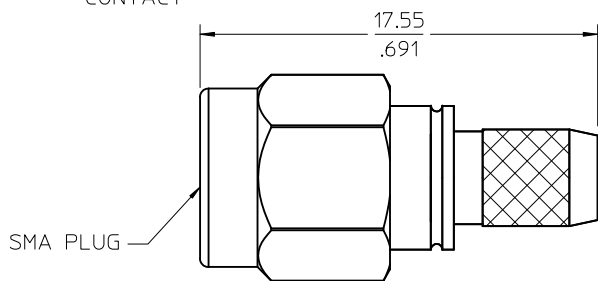
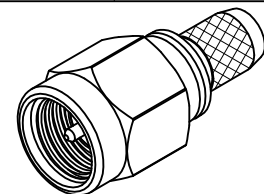
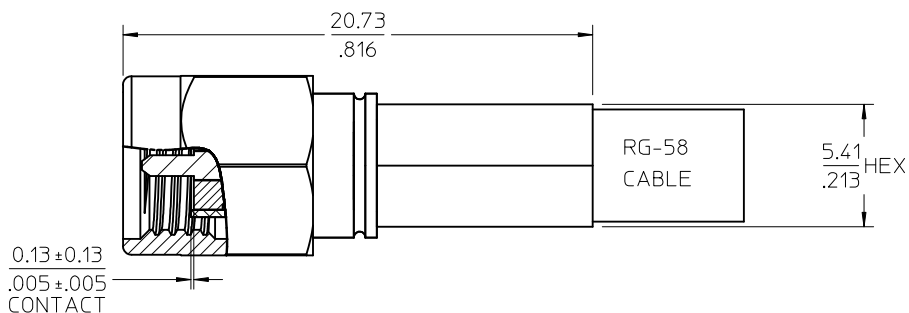
GASKET SILICONE RUBBER

C RING BERYLLIUM COPPER

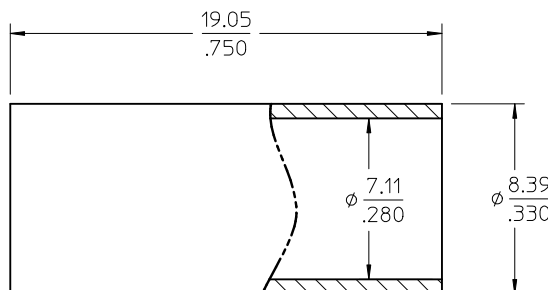
CRIMP TUBE BRASS
PLATED NICKEL

SHRINK TUBE
VERSAFIT 1/4

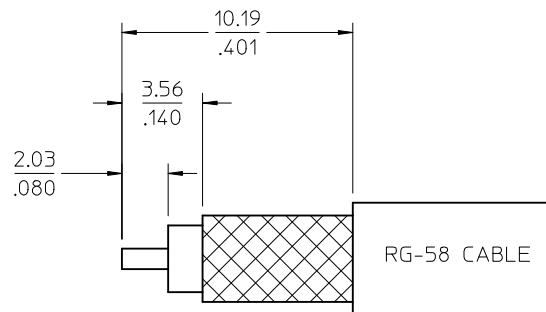
UL FILE E107635



CRIMP TUBE



SHRINK TUBE



RECOMMENDED CABLE STRIP

PS-89675-3460	ELECTRICAL/MECHANICAL
MIL-STD-348A, FIG. 310.1	INTERFACE
SPECIFICATION	DESCRIPTION

73251-0134	73251-0132 ONE PER BAG
73251-0133	STAINLESS STEEL / PASSIVATE (20 CAVITY TRAY)
73251-0132	BRASS / NICKEL PLATE (BULK PACK)
73251-0131	STAINLESS STEEL / PASSIVATE (BULK PACK)
PART NO.	DESCRIPTION

CHG: 73251-0134
ADD: 73251-0134
PS WAS 89675-1160

EC NO: URF2012-0421
DRWN: WIENER 2012/01/25
CHKD: SSS 2012/01/25
APPR: WIENER 2012/01/27

DESCRIPTION
REV: A5

QUALITY SYMBOLS ▽=0 ▽=0	GENERAL TOLERANCES (UNLESS SPECIFIED)	DIMENSION STYLE MM/IN	SCALE	DESIGN UNITS METRIC	THIRD ANGLE PROJECTION	
	4 PLACES ± --- ± --- 3 PLACES ± --- ± --- 2 PLACES ± --- ± --- 1 PLACE ± --- ± ---	DRAWN BY SSS DATE 2000/01/04	CHECKED BY SSS DATE 2000/01/04	APPROVED BY GMH DATE 2000/01/04	TITLE SMA PLUG, STR 50 OHMS, RG 58 SMA-PC	
DRAFT WHERE APPLICABLE MUST REMAIN WITHIN DIMENSIONS		MATERIAL NO. SEE TABLE	DOCUMENT NO. SD-73251-013	MOLEX INCORPORATED		
SIZE C		THIS DRAWING CONTAINS INFORMATION THAT IS PROPRIETARY TO MOLEX INCORPORATED AND SHOULD NOT BE USED WITHOUT WRITTEN PERMISSION			SHEET NO. 1 OF 1	

X-ON Electronics

Largest Supplier of Electrical and Electronic Components

Click to view similar products for [RF Connectors / Coaxial Connectors](#) category:

Click to view products by [Molex](#) manufacturer:

Other Similar products are found below :

[8915-1511-000](#) [89674-0827](#) [6001-7071-019](#) [6002-7051-003](#) [6002-7551-202](#) [6059674-1](#) [619550-1](#) [630059-000](#) [M39030/3-01N](#) [6500-7071-046](#) [6769](#) [CX050L2AQ](#) [7002-1542-011](#) [7004-1512-000](#) [7009-1511-004](#) [7010-1511-000](#) [7029-1511-060](#) [7101-1541-010](#) [7101-1571-002](#) [7105-1521-002](#) [7145-1521-002](#) [7203-1571-003](#) [7209-1511-011](#) [7210-1511-015](#) [7210-1511-019](#) [73137-5015](#) [73216-2241](#) [73404-2300](#) [7405-1521-005](#) [7405-1521-802](#) [8527](#) [8547](#) [FS11V](#) [8808-1511-001](#) [9049-9513-000](#) [9074-9513-000](#) [9101-9573-002](#) [910A205F](#) [9130-9573-002](#) [PL11SC-026](#) [PL375-33](#) [PL40-5](#) [PL74C-221](#) [PL75MC-217](#) [PL803-7](#) [980-8666-005](#) [1200690078](#) [1-201144-1](#) [R107003010W](#) [R110A172100](#)