

MATERIALS AND FINISHES

BODY, CAP SEE TABLE  
PLATED GOLD

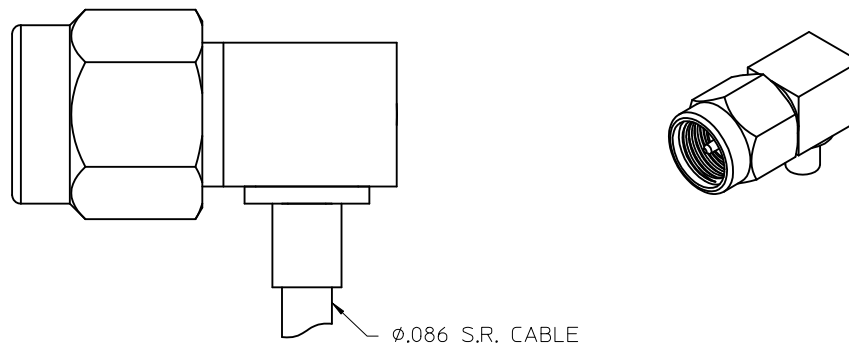
COUPLING NUT SEE TABLE  
PLATED GOLD

CENTER CONTACT SEE TABLE  
PLATED GOLD

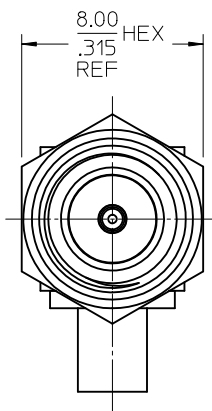
INSULATOR TEFLON

RETAINING RING BERYLLIUM COPPER

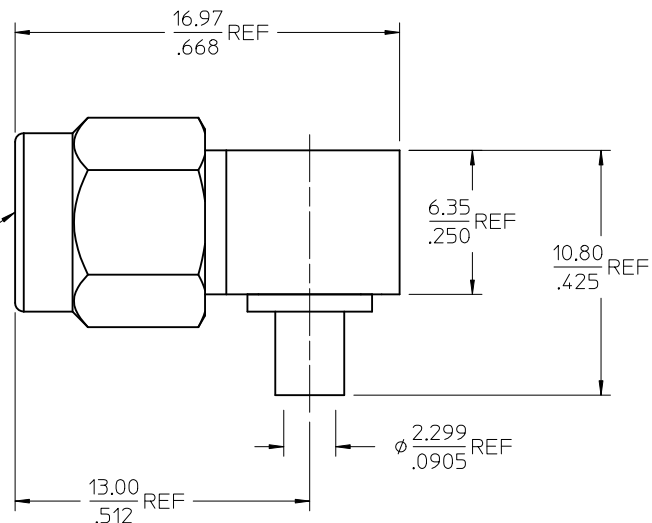
GASKET SILICONE RUBBER



∅.086 S.R. CABLE



8.00  
.315  
REF  
HEX



SMA PLUG  
INTERFACE

16.97  
.668  
REF

6.35  
.250  
REF

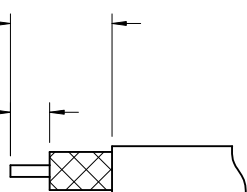
10.80  
.425  
REF

∅ 2.299  
.0905  
REF

13.00  
.512  
REF

4.48  
.176  
REF  
JACKET

1.73  
.068  
REF  
DIELECTRIC



RECOMMENDED STRIPPING DIMENSIONS  
RG405 WITH JACKET SHOWN

73251-0654	BRASS	BRASS	BRASS	BRASS	BULK
73251-0653	BRASS	BRASS	BRASS	BRASS	SINGLE BAG
73251-0652	STAINLESS STEEL	BERYLLIUM COPPER	STAINLESS STEEL	STAINLESS STEEL	BULK
73251-0651	BRASS	BRASS	BRASS	BRASS	BULK
73251-0650	BRASS	BRASS	STAINLESS STEEL	BRASS	BULK
PART NO.	BODY	CONTACT	COUPLING NUT	CAP	PACKAGING

CHG: UPDATE VIEW	EC NO: URF2013-0460 2013/02/08 DRWN: JWIENER 2013/02/08 CHKD: SSS 2013/02/08 APPR: JWIENER 2013/02/11	QUALITY SYMBOLS ▽=0 ▽=0 ▽=0	GENERAL TOLERANCES (UNLESS SPECIFIED)		DIMENSION STYLE	SCALE	DESIGN UNITS	THIRD ANGLE PROJECTION
			mm	INCH	MM/IN	INCH	INCH	
A5	REV	DESCRIPTION	4 PLACES	± ---	± ---	DRAWN BY	DATE	TITLE
			3 PLACES	± ---	± ---	TEF	2002/04/01	SMA PLUG, R/A, SR .086 50 OHMS, EWR-1632 SMA-PC/RA
			2 PLACES	± ---	± ---	CHECKED BY	DATE	
			1 PLACE	± ---	± ---	SSS	2002/04/01	
			0 PLACE	±	±	APPROVED BY	DATE	
						GMH	2002/04/01	
			ANGULAR ± 2 °		MATERIAL NO.	DOCUMENT NO.		SHEET NO.
			DRAFT WHERE APPLICABLE MUST REMAIN WITHIN DIMENSIONS		SEE TABLE	SD-73251-065		1 OF 1
THIS DRAWING CONTAINS INFORMATION THAT IS PROPRIETARY TO MOLEX INCORPORATED AND SHOULD NOT BE USED WITHOUT WRITTEN PERMISSION								

## X-ON Electronics

Largest Supplier of Electrical and Electronic Components

*Click to view similar products for [RF Connectors](#) / [Coaxial Connectors](#) category:*

*Click to view products by [Molex](#) manufacturer:*

Other Similar products are found below :

[8915-1511-000](#) [89674-0827](#) [6001-7071-019](#) [6002-7051-003](#) [6002-7551-202](#) [6059674-1](#) [619550-1](#) [630059-000](#) [M39030/3-01N](#) [6500-7071-046](#) [6769](#) [CX050L2AQ](#) [7002-1542-011](#) [7004-1512-000](#) [7009-1511-004](#) [7010-1511-000](#) [7029-1511-060](#) [7101-1541-010](#) [7101-1571-002](#) [7105-1521-002](#) [7145-1521-002](#) [7203-1571-003](#) [7209-1511-011](#) [7210-1511-015](#) [7210-1511-019](#) [73137-5015](#) [73216-2241](#) [73404-2300](#) [7405-1521-005](#) [7405-1521-802](#) [8527](#) [8547](#) [FS11V](#) [8808-1511-001](#) [9049-9513-000](#) [9074-9513-000](#) [9101-9573-002](#) [910A205F](#) [9130-9573-002](#) [PL11SC-026](#) [PL375-33](#) [PL40-5](#) [PL74C-221](#) [PL75MC-217](#) [PL803-7](#) [980-8666-005](#) [1200690078](#) [1-201144-1](#) [R107003010W](#) [R110A172100](#)