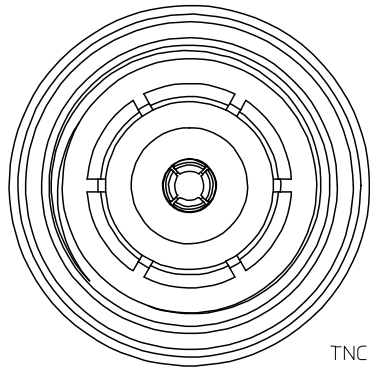
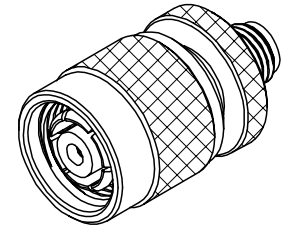


MATERIALS AND FINISHES

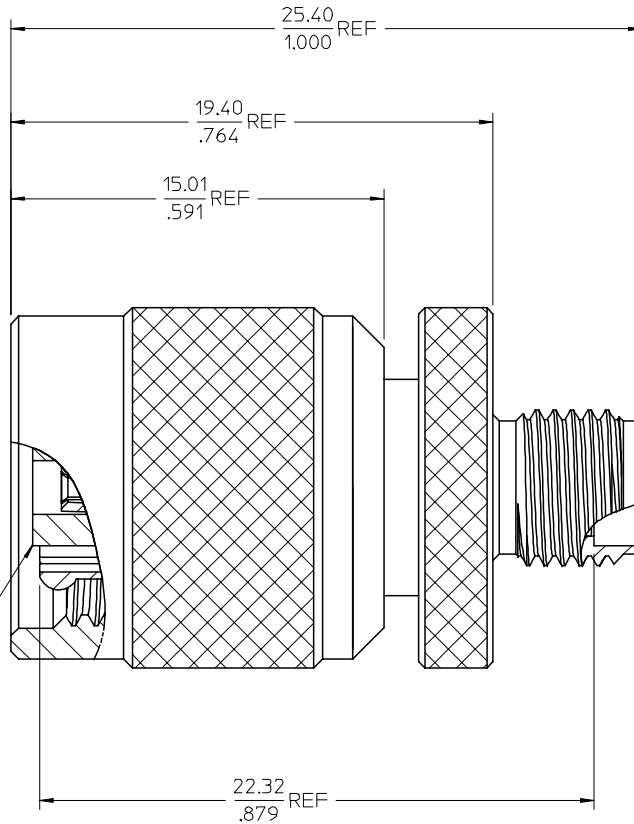
BODY, COUPLING NUT: BRASS  
PLATED NICKEL

CONTACT: PHOSPHOR BRONZE  
PLATED GOLD

INSULATOR: TEFLON

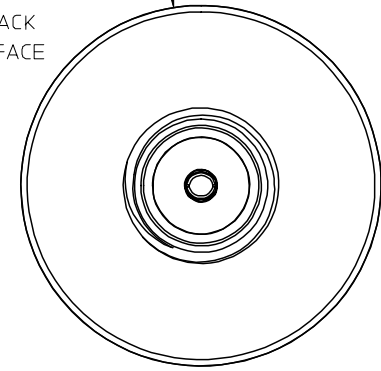


TNC PLUG  
POLARIZED  
INTERFACE



Ø 14.50 REF  
.571

SMA JACK  
INTERFACE



MIL-STD-348A, FIG. 310.2

INTERFACE SMA

SPECIFICATION

DESCRIPTION

CHG: RELEASE  
DRAWING.

FC NO: URF2008-0094  
DRAWN: ARROBERTSON 2007/08/13  
CHKD: 2007/08/13  
APPR: JIM ENEER 2007/08/13

QUALITY SYMBOLS  
▽=0  
▽=0

GENERAL TOLERANCES (UNLESS SPECIFIED)

	mm	INCH
4 PLACES	± .004	± .0005
3 PLACES	± .005	± .0008
2 PLACES	± .008	± .0012
1 PLACE	± .010	± .0015

ANGULAR ± 2 °

DRAFT WHERE APPLICABLE  
MUST REMAIN  
WITHIN DIMENSIONS

DIMENSION STYLE  
MM/IN

DRAWN BY DATE  
AZR 2008/08/08  
CHECKED BY DATE  
SSS 2008/08/08  
APPROVED BY DATE  
JDW 2008/08/08

SCALE

DESIGN UNITS  
METRIC

THIRD ANGLE PROJECTION

BSA, TNC PLUG POLARIZED  
TO SMA JACK 50 OHMS  
BSA-TNC/SMA, EWR-3415

MOLEX MOLEX INCORPORATED

MATERIAL NO.  
733861250

DOCUMENT NO.  
SD-73386-125

SHEET NO.  
1 OF 1

THIS DRAWING CONTAINS INFORMATION THAT IS PROPRIETARY TO MOLEX  
INCORPORATED AND SHOULD NOT BE USED WITHOUT WRITTEN PERMISSION

## X-ON Electronics

Largest Supplier of Electrical and Electronic Components

*Click to view similar products for [RF Adapters - Between Series](#) category:*

*Click to view products by [Molex](#) manufacturer:*

Other Similar products are found below :

[5945-9503-000](#) [MCX/F-SMA/M](#) [R192417010](#) [ADBJ20-E1-BJ379](#) [ADM2](#) [ADPL75-A1-PL75](#) [242191](#) [9317505](#) [29-3835P](#) [AD130](#) [ADBJ20-E1-PL74](#) [ADBJ77-A1PL3155](#) [ADBJ77-E1-UPL20](#) [ADRMF370](#) [242215](#) [242228](#) [R125680000W](#) [R192430000](#) [UAD95](#) [1057367-1](#) [8311505](#) [R114704000](#) [R451034500](#) [R451030500](#) [R451543000](#) [HDVDPN](#) [ADBJ20-K1-PL20](#) [R451570000](#) [R192419000](#) [R451034000](#) [J9](#) [J3WE-5](#) [R451032500](#) [242201RP](#) [17K132-K00S5](#) [03K719-S22S3](#) [AD-RSMAF-RTNC](#) [53K156-K00N5](#) [53K160-KIMN1](#) [02K119-K00E3](#) [29S132-K01N5](#) [53S156-K00N5](#) [02S119-S00E3](#) [28K132-K00N5](#) [02S109-K00S3](#) [27-8200TP](#) [242235](#) [ADBJ20-E1-BJ89](#) [ADP-SMAF-MMCXM](#) [000-2900](#)