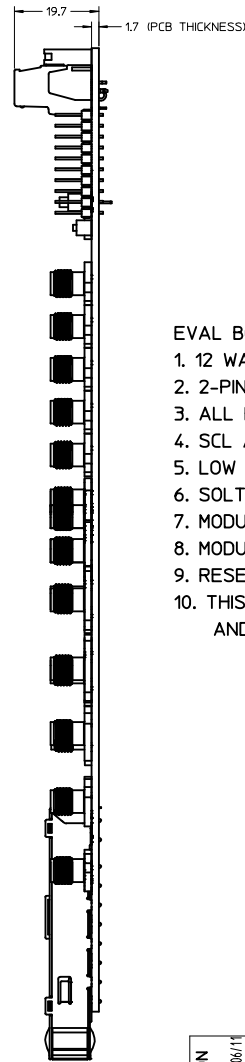
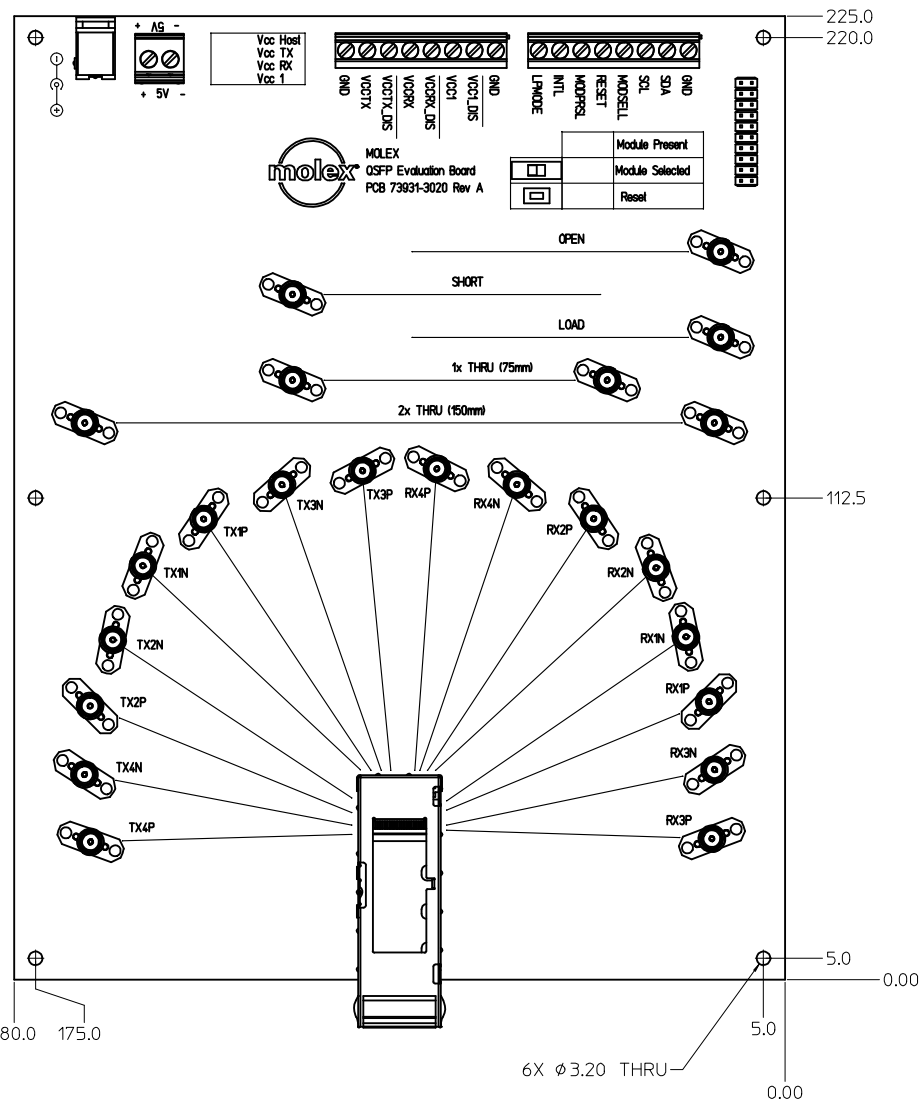


EVAL BOARD FEATURES:

1. 12 WATT, 5V WALL TRANSFORMER INCLUDED WITH EVAL BOARD
2. 2-PIN TERMINAL BLOCK AVAILABLE FOR BENCH TOP POWER SUPPLY CONNECTION
3. ALL HIGH SPEED PAIRS LENGTH MATCHED.
4. SCL AND SDA TERMINAL BLOCK CONNECTIONS FOR I2C CONTROL
5. LOW SPEED SIGNAL AND POWER TERMINAL CONNECTIONS FOR EASY ACCESSIBILITY.
6. SOLT CAL STRUCTURES (SHORT, OPEN, LOAD, 1X THRU, AND 2X THRU)
7. MODULE PRESENT LED INDICATOR
8. MODULE SELECT SWITCH
9. RESET SWITCH
10. THIS PRODUCT MEETS THE RESTRICTION OF HAZARDOUS SUBSTANCES IN ELECTRICAL AND ELECTRONIC EQUIPMENT (RoHS) DIRECTIVE (2002/95/EC).

ENTER DESCRIPTION IEC NO: USY2009-0558 DRAWN BY: CHRISCHY 2009/06/11 CHECKED BY: CHYDRAHMOOD 2009/06/22 APPR: RAHMOOD 2009/06/23	QUALITY SYMBOLS ▽=0 ▽=0	GENERAL TOLERANCES (UNLESS SPECIFIED)		DIMENSION STYLE MM ONLY	SCALE 1.75:1	DESIGN UNITS METRIC	THIRD ANGLE PROJECTION		
		4 PLACES ±--- ±---	3 PLACES ±--- ±---	2 PLACES ±0.13 ±---	1 PLACE ±0.25 ±---	ANGULAR ± 1°	DRAFT WHERE APPLICABLE MUST REMAIN WITHIN DIMENSIONS	DRAWN BY: CHRISCHY 2009/06/10 CHECKED BY: DATE GBWALZ 2009/06/10 APPROVED BY: DATE RAHMOOD 2009/06/10	TITLE OSFP EVALUATION BOARD
		MATERIAL NO.		DOCUMENT NO.		SHEET NO.		MOLEX INCORPORATED	
		739313022		SD-73931-3022		1 OF 1		THIS DRAWING CONTAINS INFORMATION THAT IS PROPRIETARY TO MOLEX INCORPORATED AND SHOULD NOT BE USED WITHOUT WRITTEN PERMISSION	



EVAL BOARD FEATURES:

1. 12 WATT, 5V WALL TRANSFORMER INCLUDED WITH EVAL BOARD
2. 2-PIN TERMINAL BLOCK AVAILABLE FOR BENCH TOP POWER SUPPLY CONNECTION
3. ALL HIGH SPEED PAIRS LENGTH MATCHED.
4. SCL AND SDA TERMINAL BLOCK CONNECTIONS FOR I2C CONTROL
5. LOW SPEED SIGNAL AND POWER TERMINAL CONNECTIONS FOR EASY ACCESSIBILITY.
6. SOLT CAL STRUCTURES (SHORT, OPEN, LOAD, 1X THRU, AND 2X THRU)
7. MODULE PRESENT LED INDICATOR
8. MODULE SELECT SWITCH
9. RESET SWITCH
10. THIS PRODUCT MEETS THE RESTRICTION OF HAZARDOUS SUBSTANCES IN ELECTRICAL AND ELECTRONIC EQUIPMENT (RoHS) DIRECTIVE (2002/95/EC).

ENTER DESCRIPTION IEC NO: USY2009-0558 DRAWN BY: CHRISCHY 2009/06/11 CHECKED BY: CHYKORAHMOOD 2009/06/22 APPR: RAHMOOD 2009/06/23	QUALITY SYMBOLS ▽=0 ▽=0	GENERAL TOLERANCES (UNLESS SPECIFIED)		DIMENSION STYLE MM ONLY	SCALE 1.75:1	DESIGN UNITS METRIC	THIRD ANGLE PROJECTION			
		4 PLACES ±--- ±---	3 PLACES ±--- ±---	2 PLACES ±0.13 ±---	1 PLACE ±0.25 ±---	ANGULAR ± 1°	DRAFT WHERE APPLICABLE MUST REMAIN WITHIN DIMENSIONS	DRAWN BY: CHRISCHY 2009/06/10 CHECKED BY: GBWALZ 2009/06/10 APPROVED BY: RAHMOOD 2009/06/10	DATE:	TITLE:
		MATERIAL NO:			DOCUMENT NO:		SHEET NO:			
		739313022			SD-73931-3022		1 OF 1			

X-ON Electronics

Largest Supplier of Electrical and Electronic Components

Click to view similar products for [Interface Development Tools](#) category:

Click to view products by [Molex](#) manufacturer:

Other Similar products are found below :

[DP130SSEVM](#) [ISO3086TEVM-436](#) [ADP5585CP-EVALZ](#) [CHA2066-99F](#) [AS8650-DB](#) [MLX80104 TESTINTERFACE](#) [I2C-CPEV/NOPB](#)
[ISO35TEVM-434](#) [416100120-3](#) [XR18910ILEVB](#) [XR21B1421IL28-0A-EVB](#) [TW-DONGLE-USB](#) [EVAL-ADM2491EEBZ](#)
[MAXREFDES23DB#](#) [MAX9286COAXEVKIT#](#) [MAX3100EVKIT](#) [MAX13235EEVKIT](#) [XR21B1424IV64-0A-EVB](#) [CMOD232+](#)
[MAX13042EEVKIT+](#) [MAX14838EVKIT#](#) [MAXCAM705OV635AAA#](#) [DS100BR111AEVK/NOPB](#) [DC241C](#) [MAX9286RCARH3DB#](#)
[DC1794A](#) [SN65HVS885EVM](#) [DFR0257](#) [XR22404CG28EVB](#) [ZLR964122L](#) [ZLR88822L](#) [EVK-U23-01S](#) [EVK-W262U-00](#) [DC327A](#)
[PIM511](#) [PIM536](#) [PIM517](#) [DEV-17512](#) [STR-FUSB3307MPX-PPS-GEVK](#) [MAXREFDES177#](#) [EVAL-ADM2567EEBZ](#) [ZSSC3240KIT](#)
[P0551](#) [MAX9121EVKIT](#) [PIM532](#) [ZSC31010KITV2P1](#) [UMFT4233HPEV](#) [LVDS-18B-EVK](#) [XR20M1170G16-0A-EB](#) [XR20M1170G16-0B-](#)
[EB](#)