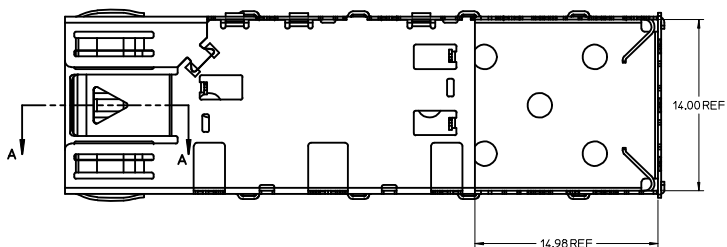


PART NO. AND WEEK/YEAR DATE CODE TO BE PRINTED/STAMPED ON THE SIDE OF COMPLETED CAGE ASSEMBLY APPROXIMATELY AS SHOWN.

WEEK/YEAR DATE CODE TABLE	
WK	01 THRU 52 OR 53 EXAMPLE : 01-FIRST WEEK OF YEAR 52-LAST WEEK OF YEAR
YR	13,14,15 ETC. EXAMPLE : YEAR 2015 = 15

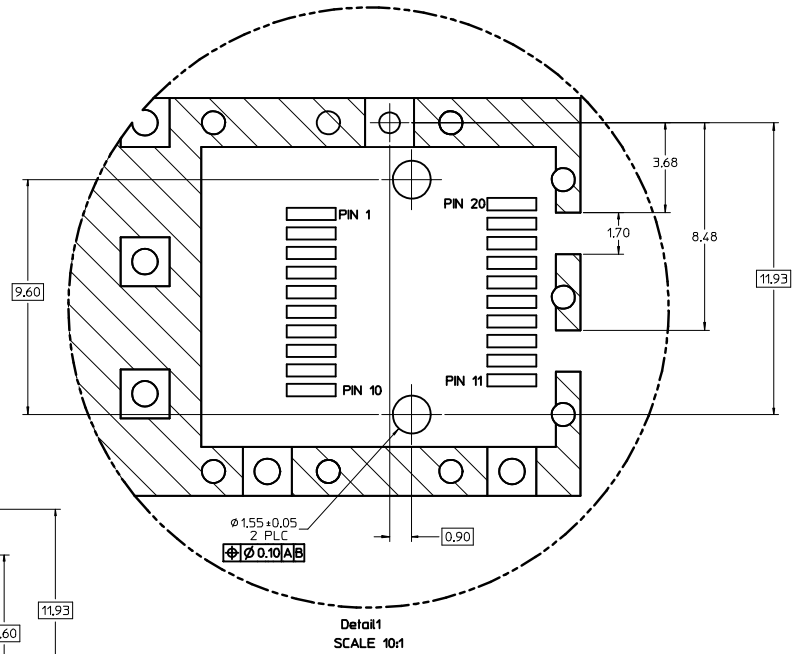
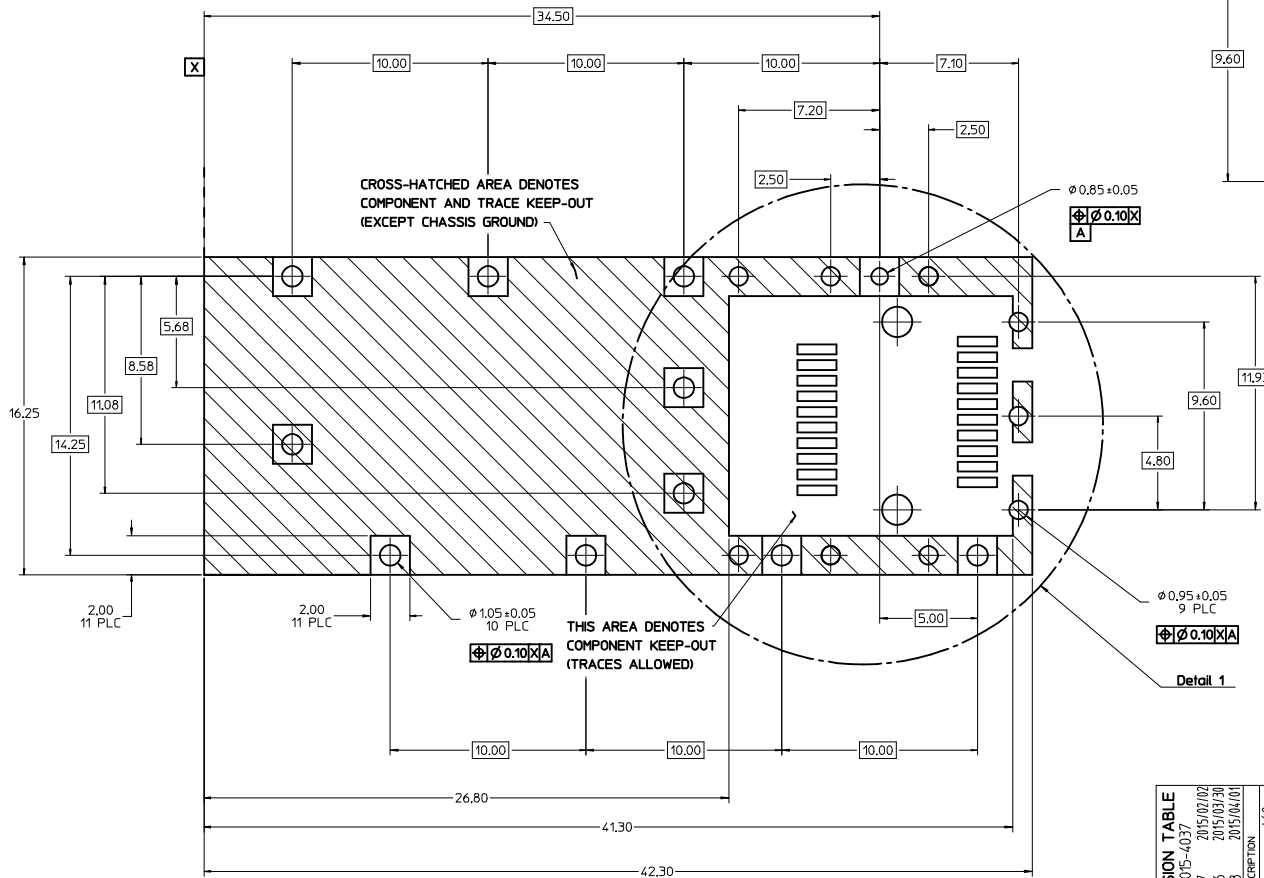


**NOTES:**

1. PRESS FIT LEGS, 3.05mm LONG.
2. THIS CAGE IS FOR SINGLE SIDED USE ONLY.
3. CAN BE USED WITH THE FOLLOWING LIGHT PIPE PART NUMBERS:  
747260001 - LIGHT PIPE FROM BACK TO TOP (REFER TO DOCUMENT SD-74726-001)  
747260002 - LIGHT PIPE FROM SIDE TO TOP (REFER TO DOCUMENT SD-74726-002)
4. MATERIAL : STAINLESS STEEL.
5. FINISH : ULTRASONIC CLEANING.
6. NO RoHS EXEMPTIONS.

SEE REVISION TABLE EC NO: CPG2015-4037 DRAWN BY: CHYKSYANG16 CHECKED BY: APPR:RCHEN08 REV	QUALITY SYMBOLS ▽=0 ▽=0 ▽=0	GENERAL TOLERANCES (UNLESS SPECIFIED)		DIMENSION STYLE	SCALE	DESIGN UNITS	THIRD ANGLE PROJECTION
		mm	INCH	MM ONLY	5:1	METRIC	
		4 PLACES	± ---	± ---			
		3 PLACES	± 0.13	± ---			
		2 PLACES	± 0.25	± ---			
		1 PLACE	± ---	± ---			
		0 PLACE	± ---	± ---			
		ANGULAR ±1/2°					
		DRAFT WHERE APPLICABLE MUST REMAIN WITHIN DIMENSIONS					
		MATERIAL NO.	747370041	DOCUMENT NO.	SD-74737-0041	SHEET NO.	1 OF 4
		THIS DRAWING CONTAINS INFORMATION THAT IS PROPRIETARY TO MOLEX INCORPORATED AND SHOULD NOT BE USED WITHOUT WRITTEN PERMISSION					

- PADS AND VIAS ARE CHASSIS GROUND.
- HOLE LAYOUT SHOWN IS FOR SINGLE SIDED MOUNTING ONLY.
- 1.57 MINIMUM PCB THICKNESS.
- CONNECTOR PAD LAYOUT PER SFP MSA, WILL ACCOMODATE MOLEX CONNECTOR SERIES 74441 OR EQUIVALENT.



Detail 1  
SCALE 10:1

REV	DESCRIPTION	QUALITY SYMBOLS		GENERAL TOLERANCES (UNLESS SPECIFIED)		DIMENSION STYLE		SCALE	DESIGN UNITS	THIRD ANGLE PROJECTION
		mm	INCH	mm	INCH	MM ONLY	8:1	METRIC	☉	
1	4 PLACES	±0.13	±---	±0.13	±---	mm	mm	8:1	METRIC	☉
2	3 PLACES	±0.25	±---	±0.25	±---	mm	mm	8:1	METRIC	☉
3	2 PLACES	±0.50	±---	±0.50	±---	mm	mm	8:1	METRIC	☉
4	1 PLACE	±1.00	±---	±1.00	±---	mm	mm	8:1	METRIC	☉
5	0 PLACES	±---	±---	±---	±---	mm	mm	8:1	METRIC	☉

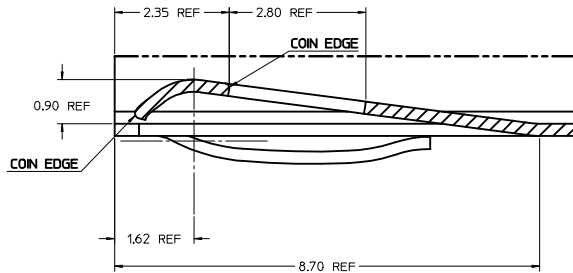
  

SEE REVISION TABLE	DATE	DESCRIPTION	MATERIAL NO.	DOCUMENT NO.	SHEET NO.
EC NO: CPG2015-4037	2015/02/02	DRW:EWANG07	747370041	SD-74737-0041	2 OF 4
CHKD:SYANG16	2015/03/30	CHEKED BY: SYANG16			
APPR:RCHEN08	2015/04/01	APPROVED BY: RCHEN08			

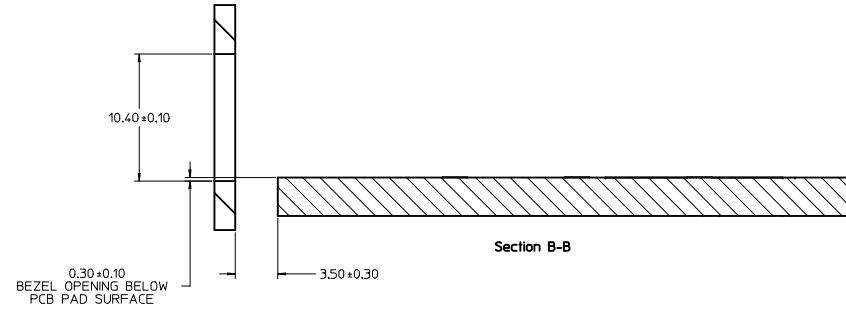
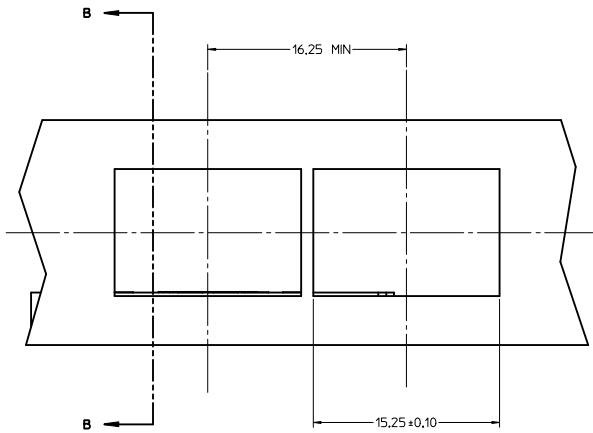
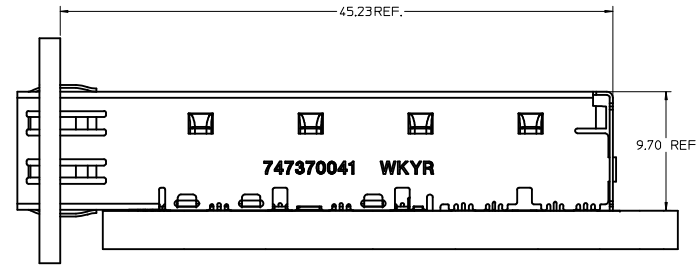
TITLE: SFP ONE PIECE CAGE PRESS-FIT (3.05 LEGS) W/ MODIFIED LATCH TANG



THIS DRAWING CONTAINS INFORMATION THAT IS PROPRIETARY TO MOLEX INCORPORATED AND SHOULD NOT BE USED WITHOUT WRITTEN PERMISSION



PARTIAL OF A-A  
SCALE 20:1



QUALITY SYMBOLS		GENERAL TOLERANCES (UNLESS SPECIFIED)		DIMENSION STYLE		SCALE	DESIGN UNITS	THIRD ANGLE PROJECTION	
		mm	INCH	MM ONLY		5:1	METRIC		
$\nabla=0$	4 PLACES	±---	±---	DRAWN BY	DATE	<b>SFP ONE PIECE CAGE PRESS-FIT (3,05 LEGS) W/ MODIFIED LATCH TANG</b>  <b>molex</b>			
$\nabla=0$	3 PLACES	±---	±---	EWANG07	2014/07/15				
$\nabla=0$	2 PLACES	±0.13	±---	CHECKED BY	DATE				
$\nabla=0$	1 PLACE	±0.25	±---	SYANG16	2014/10/22				
	0 PLACE	±---	±---	APPROVED BY	DATE	<b>SD-74737-0041</b>			
				RCHEN08	2014/11/07	MATERIAL NO. <b>747370041</b>		DOCUMENT NO. <b>SD-74737-0041</b>	
ANGULAR ±1/2° DRAFT WHERE APPLICABLE MUST REMAIN WITHIN DIMENSIONS				SIZE <b>D</b>		THIS DRAWING CONTAINS INFORMATION THAT IS PROPRIETARY TO MOLEX INCORPORATED AND SHOULD NOT BE USED WITHOUT WRITTEN PERMISSION			

20 19 18 17 16 15 14 13 12 11 10 9 8 7 6 5 4 3 2 1

DATE	REV	CHANGES
2014/10/22	A	INITIAL RELEASED
2014/12/29	B	SHEET 1: E10: UPDATED WELD TRACE AT BOTTOM VIEW
2015/03/30	C	SHEET 1: E10: CANCEL WELD TRACE AT BOTTOM VIEW

SEE REVISION TABLE IEC NO: CPG2015-4037 DRAWN BY: EWANG07 CHYKSYANG16 APPROVED BY: RCHEN08	2015/02/02 2015/03/30 2015/04/01	DESCRIPTION QUALITY SYMBOLS	GENERAL TOLERANCES (UNLESS SPECIFIED)	DIMENSION STYLE <b>MM ONLY</b>	SCALE <b>1:1</b>	DESIGN UNITS <b>METRIC</b>	THIRD ANGLE PROJECTION
			4 PLACES ±0.15 3 PLACES ±0.13 2 PLACES ±0.25 0 PLACE ±0.25	mm      INCH	DRAWN BY: EWANG07      DATE: 2014/07/15 CHECKED BY: SYANG16      DATE: 2014/10/22 APPROVED BY: RCHEN08      DATE: 2014/11/07	TITLE <b>SFP ONE PIECE CAGE PRESS-FIT (3.05 LEGS) W/ MODIFIED LATCH TANG</b>	
			ANGULAR ±1/2° DRAFT WHERE APPLICABLE MUST REMAIN WITHIN DIMENSIONS	MATERIAL NO. <b>747370041</b>	DOCUMENT NO. <b>SD-74737-0041</b>	SHEET NO. 4 OF 4	
			THIS DRAWING CONTAINS INFORMATION THAT IS PROPRIETARY TO MOLEX INCORPORATED AND SHOULD NOT BE USED WITHOUT WRITTEN PERMISSION				



19 18 17 16 15 14 13 12 11 10 9 8 7 6 5 4 3 2 1

## X-ON Electronics

Largest Supplier of Electrical and Electronic Components

*Click to view similar products for [I/O Connectors](#) category:*

*Click to view products by [Molex](#) manufacturer:*

Other Similar products are found below :

[571763P](#) [58098-0628](#) [72.250.1628.2](#) [72.250.2428.2](#) [74720-0505](#) [76.350.0729.0](#) [76871-1403](#) [FCN-244F080-G/1](#) [FCN-260A9920](#) [PCR-E36PM](#) [PCS-XE26MA+](#) [G38A71314B](#) [1571250010](#) [157-22500-3](#) [MS3471L14-19P L/C](#) [192991-0703](#) [172501-4002](#) [172501-6002](#) [FCN-260C008-A/L0](#) [FCN-260C024-AL0](#) [FCN-261Z008](#) [2000314-1](#) [200331-1](#) [PCR-E36FC+](#) [PCS-E28FS+](#) [PCS-XE26SLFD+](#) [PCS-XE26SLFDT+](#) [G730VID08BDC24](#) [UE86K842720321](#) [38113800006](#) [DP3AR020WQ1R200](#) [Z4.102.0680.0](#) [500-1040](#) [500-1052](#) [500-1054](#) [ZP-4008-66L](#) [0709821002](#) [DX40-20P\(55\)](#) [5554841-1](#) [MS3474W18-8P-LC\\*](#) [U90B3054061110](#) [U65-E04-4020](#) [ZPF00000000097891](#) [747360449](#) [10099439-003C-TRLF](#) [10137239-0021LF](#) [E9320-001-01](#) [10137239-0011LF](#) [70289-001LF](#) [70.060.1028.0](#)