

PLEASE CHECK WWW.MOLEX.COM FOR LATEST PART INFORMATION

Part Number: **0757051104**
Status: **Active**
Overview: GbX I-Trac Backplane Connector System
Description: GbX I-Trac Vertical Header Module, 1.85mm by 3.70mm Pitch, Unguided, Open Ends, 11 Rows, 10 Columns, 220 Circuits, Mating Pin Length 5.70mm

Documents:

3D Model	Product Specification PS-75710-999-001 (PDF)
Drawing (PDF)	Packaging Specification PK-70873-587 (PDF)
3D Model (PDF)	RoHS Certificate of Compliance (PDF)

Agency Certification

UL E29179

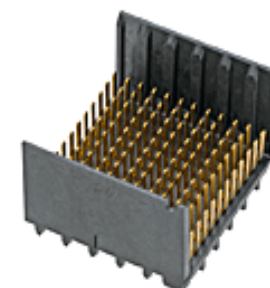
General

Product Family	Backplane Connectors
Series	75705
Application	Backplane, Midplane, Orthogonal
Component Type	PCB Header
Overview	GbX I-Trac Backplane Connector System
Product Name	GbX I-Trac
UPC	822350731836

Physical

Circuits (Loaded)	220
Circuits (maximum)	220
Color - Resin	Black
Durability (mating cycles max)	200
First Mate / Last Break	No
Flammability	94V-0
Guide to Mating Part	No
Keying to Mating Part	None
Material - Metal	High Performance Alloy (HPA)
Material - Plating Mating	Gold
Material - Plating Termination	Tin
Material - Resin	High Temperature Thermoplastic
Net Weight	7.200/g
Number of Columns	10
Number of Pairs	6, Open Pin Field
Number of Rows	11
Orientation	Vertical
PC Tail Length	2.10mm
PCB Locator	No
PCB Retention	None
PCB Thickness - Recommended	1.60mm
Packaging Type	Tray
Pitch - Mating Interface	1.85mm, 3.70mm
Pitch - Termination Interface	1.00mm, 2.70mm
Plating min - Mating	0.762µm
Plating min - Termination	0.762µm
Polarized to PCB	No
Stackable	Yes
Surface Mount Compatible (SMC)	Yes
Temperature Range - Operating	-55° to +80°C
Termination Interface: Style	Through Hole - Compliant Pin

Electrical



Series image - Reference only

EU ELV

Not Relevant

EU RoHS

Compliant

REACH SVHC

Not Contained Per -
D(2020)4578-DC (25
June 2020)

Halogen-Free

Status

Low-Halogen

For more information, please visit [Contact US](#)

China ROHS

ELV

RoHS Phthalates

China RoHS

Green Image

Not Relevant

Not Contained

Search Parts in this Series

[75705](#) Series

Mates With

[75710](#) GbX I-Trac Right Angle Receptacle Module

Use With

[78232](#) GbX I-Trac Vertical Power Receptacle. [75234](#) Backplane Free Standing Guide Pin

Application Tooling | FAQ

Tooling specifications and manuals are found by selecting the products below. Crimp Height Specifications are then contained in the Application Tooling Specification document.

Global

Description

Product #

Backplane Insertion [621005110](#)

Tool for Signal

Contact Insertion

Current - Maximum per Contact	1.0A
Data Rate	12.0 Gbps
Real Signals (per 25mm)	148
Shield Type	N/A
Shielded	No
Voltage - Maximum	120V AC (RMS)/DC

Solder Process Data

Lead-free Process Capability	N/A
------------------------------	-----

Material Info**Reference - Drawing Numbers**

Packaging Specification	PK-70873-587
Product Specification	PS-75710-999-001
Sales Drawing	SD-75705-001

Press-In Tool for <u>622018603</u> Vertical Header 11- Row, 10-Column

This document was generated on 07/27/2020

PLEASE CHECK WWW.MOLEX.COM FOR LATEST PART INFORMATION

X-ON Electronics

Largest Supplier of Electrical and Electronic Components

Click to view similar products for [High Speed/Modular Connectors](#) category:

Click to view products by [Molex](#) manufacturer:

Other Similar products are found below :

[650827-1](#) [74040-1346](#) [1410191-1](#) [1410337-1](#) [1410368-3](#) [1410964-2](#) [1410326-3](#) [1410367-3](#) [1410971-4](#) [1467833-1](#) [2000877-1](#) [2000878-1](#)
[2041314-1](#) [2065387-1](#) [2187307-1](#) [163P](#) [1934290-1](#) [2000875-1](#) [2065917-1](#) [2102736-2](#) [FSR-40](#) [2169868-2](#) [22354-8](#) [437-5040-000](#) [5-](#)
[1393565-0](#) [039-0246-000](#) [0740618502](#) [0761601016](#) [0784461022](#) [10123159-12ELF](#) [030-2415-003/100 PK](#) [030-7380-004](#) [030-2494-001](#)
[532939-1](#) [5532901-3](#) [3-1469268-7](#) [74748-102LF](#) [73670-0247](#) [10041743-101LF](#) [10066670-100002LF](#) [1-533915-1](#) [249-4515-000](#) [7-1469373-](#)
[3](#) [DL2-2J/S](#) [2000713-8](#) [2000713-7](#) [10124313-101LF](#) [3011-21](#) [757105208](#) [EBTF-4-10-2.0-S-RA-1](#)