

**PLEASE CHECK WWW.MOLEX.COM FOR LATEST PART INFORMATION**

**Part Number:** **0760151103**  
**Status:** **Active**  
**Overview:** GbX I-Trac Backplane Connector System  
**Description:** GbX I-Trac Vertical Header Module, 1.85mm by 3.70mm Pitch, Unguided, Open Ends, 7 Rows, 10 Columns, 140 Circuits, Mating Pin Length 4.70mm

**Documents:**

[3D Model](#) [Packaging Specification PK-70873-802-001 \(PDF\)](#)  
[Drawing \(PDF\)](#) [RoHS Certificate of Compliance \(PDF\)](#)  
[Product Specification PS-75710-999-001 \(PDF\)](#)

**Agency Certification**

UL E29179

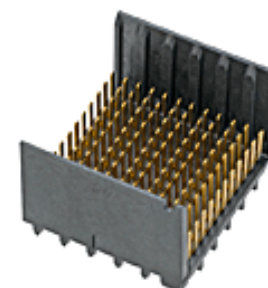
**General**

Product Family Backplane Connectors  
Series [76015](#)  
Application Backplane, Midplane, Orthogonal  
Component Type PCB Header  
Overview [GbX I-Trac Backplane Connector System](#)  
Product Name GbX I-Trac  
UPC 800756824826

**Physical**

Circuits (Loaded) 140  
Circuits (maximum) 140  
Color - Resin Black  
Durability (mating cycles max) 200  
First Mate / Last Break No  
Flammability 94V-0  
Guide to Mating Part No  
Keying to Mating Part None  
Material - Metal High Performance Alloy (HPA)  
Material - Plating Mating Gold  
Material - Plating Termination Tin  
Material - Resin High Temperature Thermoplastic  
Net Weight 4.980/g  
Number of Columns 10  
Number of Pairs 4, Open Pin Field  
Number of Rows 7  
Orientation Vertical  
PC Tail Length 2.10mm  
PCB Locator No  
PCB Retention None  
PCB Thickness - Recommended 1.60mm  
Packaging Type Tray  
Pitch - Mating Interface 1.85mm, 3.70mm  
Pitch - Termination Interface 1.00mm, 2.70mm  
Plating min - Mating 0.762µm  
Plating min - Termination 0.762µm  
Polarized to PCB No  
Stackable Yes  
Surface Mount Compatible (SMC) Yes  
Temperature Range - Operating 85°C  
Termination Interface: Style Through Hole - Compliant Pin

**Electrical**



Series image - Reference only

**EU ELV**

**Not Relevant**

**EU RoHS**

**Compliant**

**REACH SVHC**

Not Contained Per -  
D(2020)9139-DC (19  
Jan 2021)

**Halogen-Free**

**Status**

**Low-Halogen**

For more information, please visit [Contact US](#)

China ROHS

ELV

RoHS Phthalates

**China RoHS**

Green Image

Not Relevant

Not Contained

**Search Parts in this Series**

[76015](#) Series

**Mates With**

[76020](#) GbX I-Trac Right Angle Receptacle Module

**Use With**

[78227](#) GbX I-Trac Vertical Power Receptacle. [75234](#) Backplane Free Standing Guide Pin

Current - Maximum per Contact	1.0A
Data Rate	12.0 Gbps
Shield Type	N/A
Shielded	No
Voltage - Maximum	120V AC (RMS)/DC

**Solder Process Data**

Lead-freeProcess Capability	N/A
-----------------------------	-----

**Material Info****Reference - Drawing Numbers**

Packaging Specification	PK-70873-802-001
Product Specification	PS-75710-999-001
Sales Drawing	SD-76015-001-001

This document was generated on 09/21/2021

**PLEASE CHECK [WWW.MOLEX.COM](http://WWW.MOLEX.COM) FOR LATEST PART INFORMATION**

## X-ON Electronics

Largest Supplier of Electrical and Electronic Components

*Click to view similar products for [High Speed/Modular Connectors](#) category:*

*Click to view products by [Molex](#) manufacturer:*

Other Similar products are found below :

[650827-1](#) [74040-1346](#) [1410191-1](#) [1410337-1](#) [1410368-3](#) [1410964-2](#) [1410326-3](#) [1410367-3](#) [1410971-4](#) [1467833-1](#) [2000877-1](#) [2000878-1](#)  
[2041314-1](#) [2065387-1](#) [2187307-1](#) [163P](#) [1934290-1](#) [2000875-1](#) [2065917-1](#) [2102736-2](#) [FSR-40](#) [2169868-2](#) [22354-8](#) [437-5040-000](#) [5-](#)  
[1393565-0](#) [039-0246-000](#) [0740618502](#) [0761601016](#) [0784461022](#) [10123159-12ELF](#) [030-2415-003/100 PK](#) [030-7380-004](#) [030-2494-001](#)  
[532939-1](#) [5532901-3](#) [3-1469268-7](#) [74748-102LF](#) [73670-0247](#) [10041743-101LF](#) [10066670-100002LF](#) [1-533915-1](#) [249-4515-000](#) [7-1469373-](#)  
[3](#) [DL2-2J/S](#) [2000713-8](#) [2000713-7](#) [10124313-101LF](#) [3011-21](#) [757105208](#) [EBTF-4-10-2.0-S-RA-1](#)