

**PLEASE CHECK WWW.MOLEX.COM FOR LATEST PART INFORMATION**

**Part Number:** [0761605010](#)  
**Status:** **Active**  
**Overview:** [Impact Backplane Connector and Cable Assembly System](#)  
**Description:** Impact 100 Ohm 4 Pair Right-Angle Daughtercard Receptacle, Right Guided, 10 Columns, 120 Circuits, Plated Through Hole Dimension 0.46mm, Lead-Free

**Documents:**

<a href="#">Drawing (PDF)</a>	<a href="#">Application Specification AS-76060-9999-001 (PDF)</a>
<a href="#">3D Model (PDF)</a>	<a href="#">Packaging Specification PK-70873-610-001 (PDF)</a>
<a href="#">3D Model</a>	<a href="#">Test Summary TS-76160-0001-001 (PDF)</a>
<a href="#">Product Specification PS-76060-999-001 (PDF)</a>	<a href="#">Symbol Footprint Data SYM-76160-5010-001 (PDF)</a>
<a href="#">Application Specification AS-76060-990-001 (PDF)</a>	<a href="#">RoHS Certificate of Compliance (PDF)</a>

**Agency Certification**

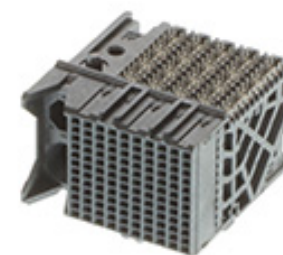
UL E29179

**General**

Product Family	Backplane Connectors
Series	<a href="#">76160</a>
Application	Conventional, Coplanar, Daughtercard
Application Tooling Documents	TM-622018799-001
Component Type	PCB Receptacle
Electrical Model	Yes
Overview	<a href="#">Impact Backplane Connector and Cable Assembly System</a>
Product Name	Impact
UPC	800756929156

**Physical**

Circuits (Loaded)	120
Circuits (maximum)	120
Color - Resin	Black
Durability (mating cycles max)	200
First Mate / Last Break	No
Flammability	94V-0
Guide to Mating Part	Yes
Keying to Mating Part	None
Material - Metal	High Performance Alloy (HPA)
Material - Plating Mating	Gold
Material - Plating Termination	Tin
Material - Resin	High Temperature Thermoplastic
Net Weight	15.548/g
Number of Columns	10
Number of Pairs	4
Number of Rows	12
Orientation	Right Angle
PC Tail Length	1.20mm
PCB Locator	No
PCB Retention	None
PCB Thickness - Recommended	1.00mm
Packaging Type	Tray
Pitch - Mating Interface	1.90mm
Pitch - Termination Interface	1.90mm
Plating min - Mating	0.762µm
Polarized to PCB	Yes
Stackable	No
Temperature Range - Operating	-55° to +85°C



*Series image - Reference only*

**EU ELV**

**Not Relevant**

**EU RoHS**

**Compliant**

**REACH SVHC**

Not Contained Per -  
D(2021)4569-DC (8  
July 2021)

**Halogen-Free**

**Status**

**Low-Halogen**

For more information, please visit [Contact US](#)

China ROHS

ELV

RoHS Phthalates

**China RoHS**

Green Image

Not Relevant

Not Contained

**Search Parts in this Series**

[76160](#) Series

**Mates With**

[76155](#) Impact 100 Ohm Vertical Header,  
[76500](#) Impact 100 Ohm Right Angle Male Header

Termination Interface: Style Through Hole - Compliant Pin

**Electrical**

Current - Maximum per Contact 0.75A  
Data Rate 25.0 Gbps  
Impedance 100Ω  
Shield Type N/A  
Shielded No  
Voltage - Maximum 30V AC (RMS)/DC

**Solder Process Data**

Lead-free Process Capability N/A

**Material Info**

**Reference - Drawing Numbers**

Application Specification AS-76060-990-001, AS-76060-9999-001  
Electrical Model Document EE-76160-003-001  
Packaging Specification PK-70873-610-001  
Product Specification PS-76060-999-001  
S-Parameter Model SP-76160-003-001  
Sales Drawing SD-76160-004-001  
Symbol/Footprint Data SYM-76160-5010-001  
Test Summary TS-76160-0001-001

This document was generated on 10/05/2021

**PLEASE CHECK [WWW.MOLEX.COM](http://WWW.MOLEX.COM) FOR LATEST PART INFORMATION**

## X-ON Electronics

Largest Supplier of Electrical and Electronic Components

*Click to view similar products for [High Speed/Modular Connectors](#) category:*

*Click to view products by [Molex](#) manufacturer:*

Other Similar products are found below :

[650827-1](#) [74040-1346](#) [1410191-1](#) [1410337-1](#) [1410368-3](#) [1410964-2](#) [1410326-3](#) [1410367-3](#) [1410971-4](#) [1467833-1](#) [2000877-1](#) [2000878-1](#)  
[2041314-1](#) [2065387-1](#) [2187307-1](#) [163P](#) [1934290-1](#) [2000875-1](#) [2065917-1](#) [2102736-2](#) [FSR-40](#) [2169868-2](#) [22354-8](#) [437-5040-000](#) [5-](#)  
[1393565-0](#) [039-0246-000](#) [0740618502](#) [0761601016](#) [0784461022](#) [10123159-12ELF](#) [030-2415-003/100 PK](#) [030-7380-004](#) [030-2494-001](#)  
[532939-1](#) [5532901-3](#) [3-1469268-7](#) [74748-102LF](#) [73670-0247](#) [10041743-101LF](#) [10066670-100002LF](#) [1-533915-1](#) [249-4515-000](#) [7-1469373-](#)  
[3](#) [DL2-2J/S](#) [2000713-8](#) [2000713-7](#) [10124313-101LF](#) [3011-21](#) [757105208](#) [EBTF-4-10-2.0-S-RA-1](#)