

PLEASE CHECK WWW.MOLEX.COM FOR LATEST PART INFORMATION

Part Number: [0762901022](#)
Status: **Active**
Overview: [Impact Backplane Connector and Cable Assembly System](#)
Description: Impact 100 Ohm 6 Pair Right-Angle Orthogonal Daughtercard, Unguided, 12 Columns, 216 Circuits, Plated Through Hole Dimension 0.39mm, Lead-Free

Documents:

3D Model	Application Specification AS-76850-990-001 (PDF)
3D Model (PDF)	Packaging Specification PK-70873-589-001 (PDF)
Drawing (PDF)	Symbol Footprint Data SYM-76290-1022-001 (PDF)
Product Specification PS-76060-999-001 (PDF)	RoHS Certificate of Compliance (PDF)
Application Specification AS-76060-9999-001 (PDF)	

Agency Certification

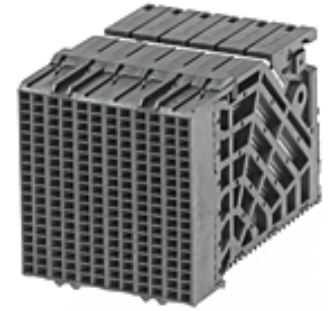
UL E29179

General

Product Family	Backplane Connectors
Series	76290
Application	Daughtercard, Orthogonal, Orthogonal Direct, Orthogonal Midplane
Application Tooling Documents	TM-622018799-001
Component Type	PCB Receptacle
Overview	Impact Backplane Connector and Cable Assembly System
Product Name	Impact
UPC	884982035300

Physical

Circuits (Loaded)	216
Circuits (maximum)	216
Color - Resin	Black
Durability (mating cycles max)	200
First Mate / Last Break	No
Flammability	94V-0
Guide to Mating Part	No
Keying to Mating Part	None
Material - Metal	High Performance Alloy (HPA)
Material - Plating Mating	Gold
Material - Plating Termination	Tin
Material - Resin	High Temperature Thermoplastic
Net Weight	27.803/g
Number of Columns	12
Number of Pairs	6
Number of Rows	18
Orientation	Right Angle
PC Tail Length	1.20mm
PCB Locator	No
PCB Retention	None
PCB Thickness - Recommended	1.00mm
Packaging Type	Tray
Pitch - Mating Interface	1.90mm, 2.15mm
Pitch - Termination Interface	1.90mm, 2.15mm
Plating min - Mating	0.762µm
Polarized to PCB	No
Stackable	No
Surface Mount Compatible (SMC)	No



Series image - Reference only

EU ELV

Not Relevant

EU RoHS

Compliant

REACH SVHC

Not Contained Per - D(2021)4569-DC (8 July 2021)

Halogen-Free

Status

Low-Halogen

For more information, please visit [Contact US](#)

China ROHS

ELV

RoHS Phthalates

China RoHS

Green Image

Not Relevant

Not Contained

Search Parts in this Series

[76290](#) Series

Mates With

[76285](#) Impact 100 Ohm Backplane Header

Temperature Range - Operating -55° to +85°C
Termination Interface: Style Through Hole - Compliant Pin

Electrical

Current - Maximum per Contact 0.75A
Data Rate 25.0 Gbps
Impedance 100Ω
Shield Type N/A
Shielded No
Voltage - Maximum 30V AC (RMS)/DC

Solder Process Data

Lead-free Process Capability N/A

Material Info

Reference - Drawing Numbers

Application Specification AS-76060-9999-001, AS-76850-990-001
Electrical Model Document EE-76290-049-001, EE-76290-055-001
Packaging Specification PK-70873-589-001
Product Specification PS-76060-999-001
S-Parameter Model SP-76290-049-001, SP-76290-055-001
Sales Drawing SD-76290-001-001
Symbol/Footprint Data SYM-76290-1022-001

This document was generated on 10/04/2021

PLEASE CHECK WWW.MOLEX.COM FOR LATEST PART INFORMATION

X-ON Electronics

Largest Supplier of Electrical and Electronic Components

Click to view similar products for [High Speed/Modular Connectors](#) category:

Click to view products by [Molex](#) manufacturer:

Other Similar products are found below :

[650827-1](#) [74040-1346](#) [1410191-1](#) [1410337-1](#) [1410368-3](#) [1410964-2](#) [1410326-3](#) [1410367-3](#) [1410971-4](#) [1467833-1](#) [2000877-1](#) [2000878-1](#)
[2041314-1](#) [2065387-1](#) [2187307-1](#) [163P](#) [1934290-1](#) [2000875-1](#) [2065917-1](#) [2102736-2](#) [FSR-40](#) [2169868-2](#) [22354-8](#) [437-5040-000](#) [5-](#)
[1393565-0](#) [039-0246-000](#) [0761601016](#) [0784461022](#) [10123159-12ELF](#) [030-2415-003/100 PK](#) [030-7380-004](#) [030-2494-001](#) [532939-1](#)
[5532901-3](#) [3-1469268-7](#) [74748-102LF](#) [73670-0247](#) [10041743-101LF](#) [10066670-100002LF](#) [1-533915-1](#) [249-4515-000](#) [7-1469373-3](#) [DL2-](#)
[2J/S](#) [2000713-8](#) [2000713-7](#) [10124313-101LF](#) [3011-21](#) [757105208](#) [EBTF-4-10-2.0-S-RA-1](#) [430305-001](#)