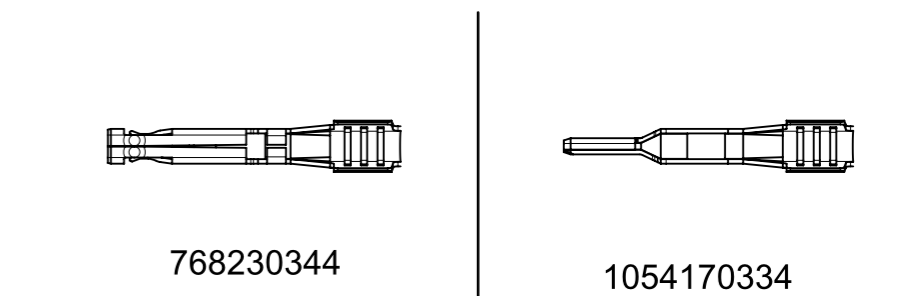
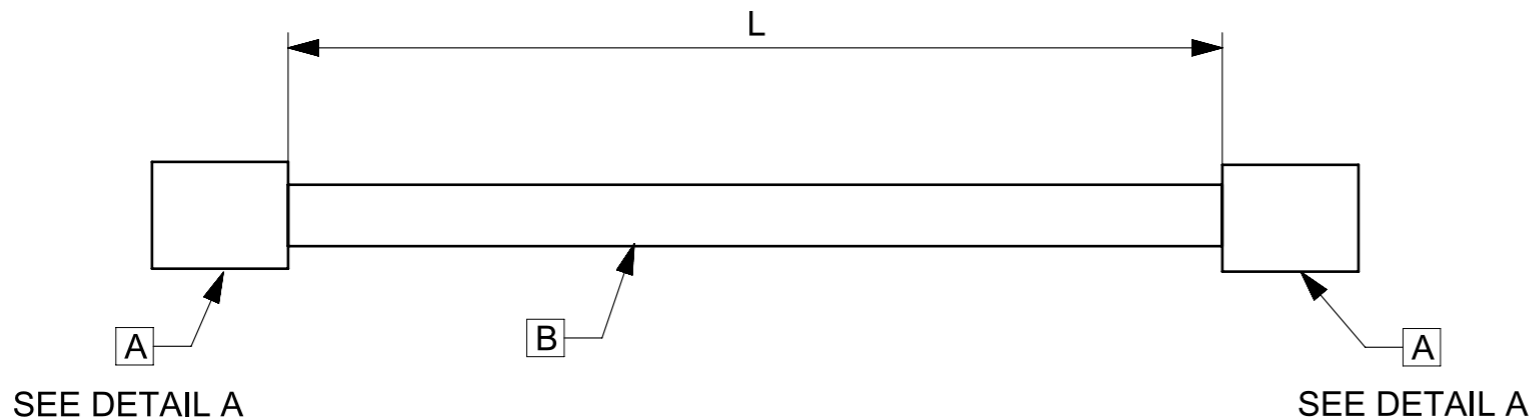


TABLE

PART NUMBER	L(MM)	TITLE	ITEM	DESCRIPTION	Q`TY	PPQ	DU
797583147	300±25	Mega-Fit 300mm	A	Mega-Fit Female Crimp 14AWG TIN 768230344	2	50	1000
			B	14AWG;PLATED;PVC;BK;OD=3.50mm;UL1015	A/R		
797583148	300±25	Mega-Fit 300mm	A	Mega-Fit Female Crimp 16AWG TIN 768230344	2	50	1000
			B	16AWG;PLATED;PVC;BK;OD=3.10mm;UL1015	A/R		
797583149	300±25	Mega-Fit 300mm	A	Mega-Fit Male Crimp 14 AWG TIN 1054170334	2	50	1000
			B	14AWG;PLATED;PVC;BK;OD=3.50mm;UL1015	A/R		
797583150	300±25	Mega-Fit 300mm	A	Mega-Fit Male Crimp 16 AWG TIN 1054170334	2	50	1000
			B	16AWG;PLATED;PVC;BK;OD=3.10mm;UL1015	A/R		



DETAIL A
TERMINAL FIGURE

NOTE:

1. PPQ: THE AMOUNT OF CABLES PER BUNDLE.
2. DU : THE MINIMUM LINE QUANTITY TO BUY.
3. STICK UL LABEL ON THE OUTSIDE CARTON.

PRE-RELEASE
REFERENCE
USE ONLY

THIS DRAWING CONTAINS INFORMATION THAT IS PROPRIETARY TO MOLEX ELECTRONIC TECHNOLOGIES, LLC AND SHOULD NOT BE USED WITHOUT WRITTEN PERMISSION		CURRENT REV DESC:		molex	
DIMENSION UNITS	SCALE				
mm	NTS			MEGA FIT PRE-CRIMPED TIN LEAD 300MM	
GENERAL TOLERANCES (UNLESS SPECIFIED)				PRODUCT CUSTOMER DRAWING	
ANGULAR TOL	± °			DOCUMENT NUMBER	
4 PLACES	±	EC NO:		797580002-SD	DOC TYPE
3 PLACES	±	DRWN: JERRYW8	2023/03/08	PSD	DOC PART
2 PLACES	±	CHK'D:		000	REVISION
1 PLACE	±	APPR:		1	
0 PLACES	±	INITIAL REVISION:			
DRAFT WHERE APPLICABLE MUST REMAIN WITHIN DIMENSIONS		THIRD ANGLE PROJECTION	DRAWING	SERIES	MATERIAL NUMBER
			A3-SIZE	79758	CUSTOMER
					SEE TABLE
					GENERAL MARKET
					SHEET NUMBER
					1 OF 1

DOCUMENT STATUS	RELEASE DATE
-----------------	--------------

X-ON Electronics

Largest Supplier of Electrical and Electronic Components

Click to view similar products for [Terminals](#) category:

Click to view products by [Molex](#) manufacturer:

Other Similar products are found below :

[00-054007-01074-6](#) [00-054007-70206-1](#) [00-054007-70210-8](#) [00-054007-70217-7](#) [00-054007-70228-3](#) [00-054007-70256-6](#) [00-054007-70316-7](#) [00-054007-49560-4](#) [00-054007-70209-2](#) [00-054007-70231-3](#) [00-054007-70241-2](#) [00-054007-70242-9](#) [00-054007-70246-7](#) [00-054007-70263-4](#) [00-054007-70288-7](#) [00-054007-70290-0](#) [00-054007-70300-6](#) [00-054007-70304-4](#) [01-2900-1-04412](#) [00581P0075](#) [600TS-10](#) [605601-1](#) [60598-1-CUT-TAPE](#) [60617-1-C](#) [61314-6-C](#) [61810-3](#) [62149-1](#) [626-0194](#) [63-S](#) [M55155/059I03](#) [M55155/079C01](#) [M55155/099B03](#) [M55155/099H02](#) [M55155/109H01](#) [M55155/12XH05](#) [M55155/29-5S](#) [M55155/29XJ08](#) [M55155/30-6S](#) [M55155/30-9S](#) [M55155/30XI09](#) [M6-14RSX](#) [696683-1](#) [696861-1](#) [696999-1](#) [M86700006](#) [D18-110B-C](#) [D18-110B-M](#) [701-1936](#) [701-1955](#) [701-2003](#)