

PLEASE CHECK WWW.MOLEX.COM FOR LATEST PART INFORMATION

Part Number: [0855437003](#)
Status: **Active**
Overview: Magnetic and Modular Jacks/Plugs
Description: Modular Jack, Cat5e, Right-Angle, Through Hole, 8/8, Shielded, Spring, 13" Reel

Documents:

| | |
|--|--|
| 3D Model | Packaging Specification PK-85542-003-001 (PDF) |
| Drawing (PDF) | Datasheet (PDF) |
| Application Specification AS-85513-001-001 (PDF) | RoHS Certificate of Compliance (PDF) |

Agency Certification

UL E107635

General

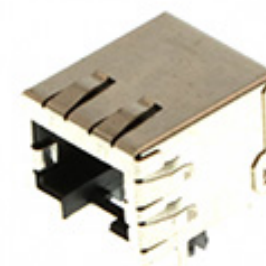
| | |
|---------------------------|--|
| Product Family | Modular Jacks/Plugs |
| Series | 85543 |
| Comments | Reflow Capable, External Shield, PCB Locator |
| Component Type | PCB Jack |
| Magnetic | No |
| Overview | <u>Magnetic and Modular Jacks/Plugs</u> |
| Performance Category | 5e |
| Power over Ethernet (PoE) | N/A |
| Product Name | Modular Jack 8/8, RJ45 |
| UPC | 884982779648 |

Physical

| | |
|--------------------------------|--------------------------------|
| Boot Color | N/A |
| Color - Resin | Black |
| Durability (mating cycles max) | 2500 |
| Flammability | 94V-0 |
| Inverted / Top Latch | No |
| Jack Height | 13.00mm |
| Lightpipes/LEDs | None |
| Material - Metal | Phosphor Bronze |
| Material - Plating Mating | Gold over Palladium Nickel |
| Material - Plating Termination | Tin |
| Material - Resin | High Temperature Thermoplastic |
| Net Weight | 5.314/g |
| Orientation | Right Angle (Side Entry) |
| PCB Retention | Yes |
| PCB Thickness - Recommended | 1.57mm |
| Packaging Type | Embossed Tape on Reel |
| Pitch - Mating Interface | 1.02mm |
| Pitch - Termination Interface | 1.27mm |
| Plating min - Mating | 0.051µm, 0.600µm |
| Plating min - Termination | 1.905µm |
| Port Configuration | 1x1 |
| Positions / Loaded Contacts | 8/8 |
| Surface Mount Compatible (SMC) | No |
| Temperature Range - Operating | -40° to +85°C |
| Termination Interface: Style | Through Hole |
| Waterproof / Dustproof | No |
| Wire/Cable Type | N/A |

Electrical

| | |
|-------------------------------|------|
| Current - Maximum per Contact | 1.5A |
| Grounding to PCB | Yes |



Series image - Reference only

EU ELV

Not Relevant

EU RoHS

Compliant

REACH SVHC

Not Contained Per -
D(2021)4569-DC (8
July 2021)

Halogen-Free

Status

Low-Halogen

For more information, please visit [Contact US](#)

China ROHS

ELV

RoHS Phthalates

China RoHS

Green Image

Not Relevant

Not Contained

Search Parts in this Series

[85543 Series](#)

Mates With

[95043 Modular Plug, Short Body](#)

| | |
|--------------------|---------|
| Grounding to Panel | Yes |
| Shielded | Yes |
| Voltage - Maximum | 125V DC |

Material Info

Reference - Drawing Numbers

| | |
|---------------------------|------------------|
| Application Specification | AS-85513-001-001 |
| Packaging Specification | PK-85542-003-001 |
| Sales Drawing | SD-85543-503-001 |

This document was generated on 10/04/2021

PLEASE CHECK WWW.MOLEX.COM FOR LATEST PART INFORMATION

X-ON Electronics

Largest Supplier of Electrical and Electronic Components

Click to view similar products for [Modular Connectors](#) / [Ethernet Connectors](#) category:

Click to view products by [Molex](#) manufacturer:

Other Similar products are found below :

[8949-H88/06BLKA/SN](#) [74441-0010/BKN](#) [MP1010RX-1000](#) [MP44RX-1000](#) [PHP-6P6C-5](#) [GAX-3-66](#) [GAX-8-62](#) [GDCX-PA-66-50](#) [GDCX-PN-64](#) [GDCX-PN-66](#) [GDCX-PN-66-50](#) [GDLX-A-66](#) [GDLX-N-66](#) [GDLX-S-66](#) [GDLX-S-88K](#) [GDTX-S-88-50](#) [GDX-PA-1010](#) [GLX-N-1010M-BLK](#) [GLX-S-88M-BLK](#) [GMX-N-1010](#) [GMX-S-1010](#) [GMX-S-66](#) [GMX-SMT4-N-88](#) [GPX-2-64](#) [GSGX-N-2-88](#) [GSGX-N-4-88](#) [GSX-NS2-88-3.05](#) [GSX-NS2-88-3.05-50](#) [GSX-NS-88-3.05-50](#) [GSX-NS-88-3.68](#) [PT-108A-8C-UL](#) [PT-J951-8C](#) [PTS-J531-8CS-50UL](#) [1-1775629-2](#) [A-2014-0-4](#) [GWLX-S-88-GR](#) [GWLX-S9-88-YG](#) [DC-1021-8-WH-6](#) [1300530003](#) [1324640-4](#) [RJ11FTVC2G](#) [RJ11FTVC2N](#) [RJFTVX2SA1G](#) [132764-001](#) [1413235](#) [MP88X-1000](#) [MPS88RX-5000](#) [MRJR-5481-0F2](#) [E5288-S000K3-L](#) [E5908-15A242-L](#)