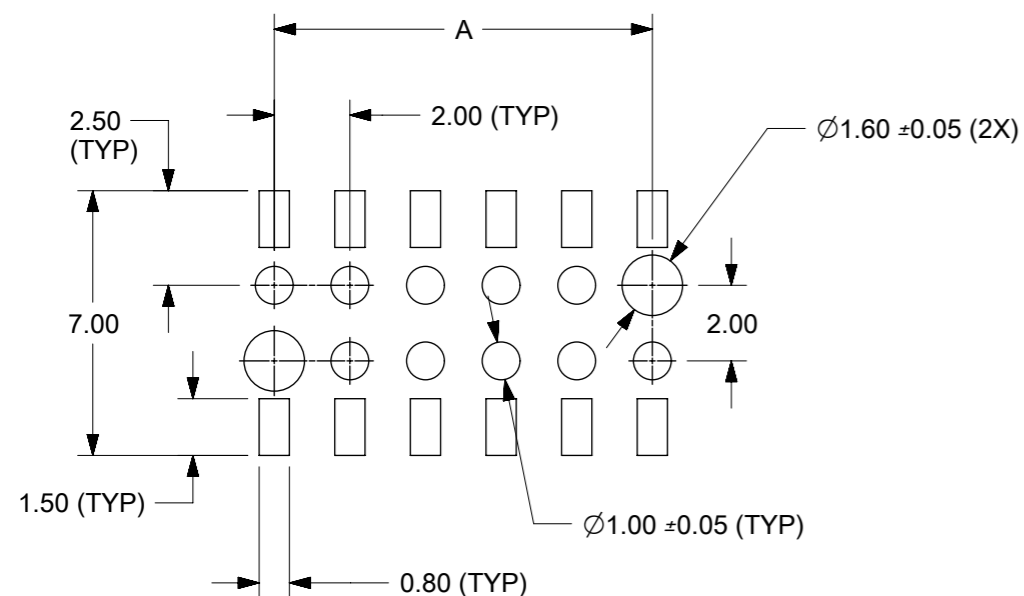


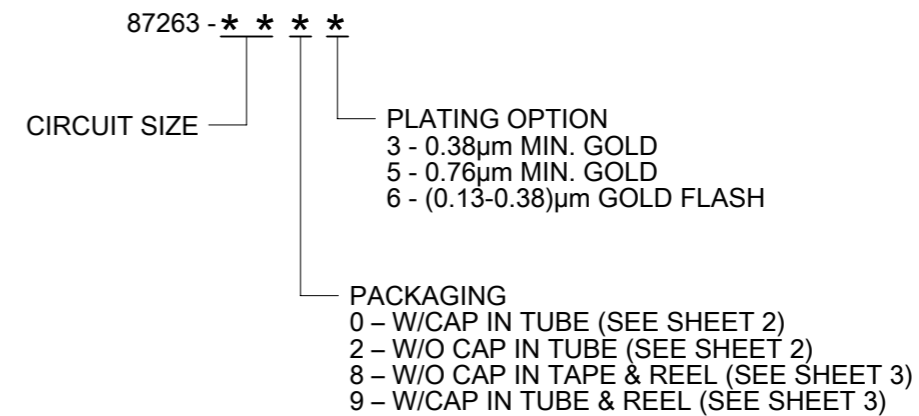
PARTS TO BE PACK WITH CAP (12 CKT SHOWN)



RECOMMENDED SOLDER PAD DESIGN

| CKT. SIZE | DIM. A | DIM. B |
|-----------|--------|--------|
| 4         | 2.00   | 4.00   |
| 6         | 4.00   | 6.00   |
| 8         | 6.00   | 8.00   |
| 10        | 8.00   | 10.00  |
| 12        | 10.00  | 12.00  |
| 14        | 12.00  | 14.00  |
| 16        | 14.00  | 16.00  |
| 18        | 16.00  | 18.00  |
| 20        | 18.00  | 20.00  |
| 22        | 20.00  | 22.00  |
| 24        | 22.00  | 24.00  |
| 26        | 24.00  | 26.00  |
| 28        | 26.00  | 28.00  |
| 30        | 28.00  | 30.00  |
| 32        | 30.00  | 32.00  |
| 34        | 32.00  | 34.00  |
| 36        | 34.00  | 36.00  |
| 38        | 36.00  | 38.00  |
| 40        | 38.00  | 40.00  |
| 42        | 40.00  | 42.00  |
| 44        | 42.00  | 44.00  |

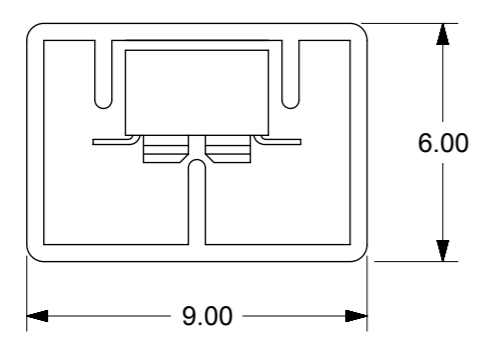
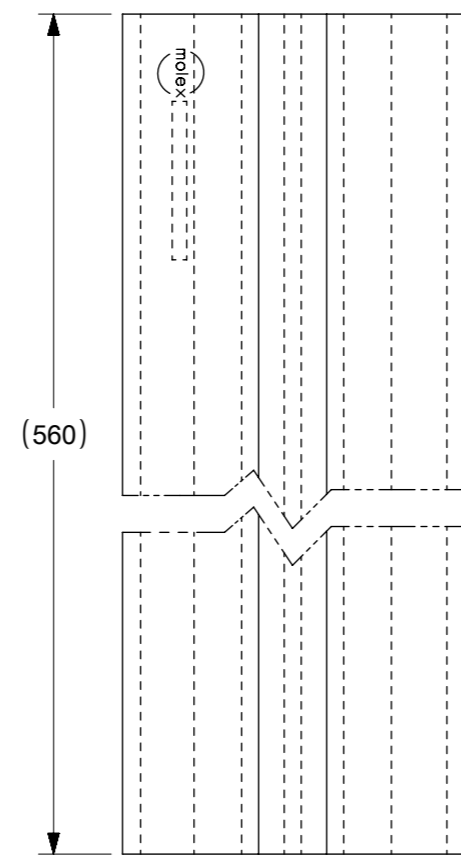
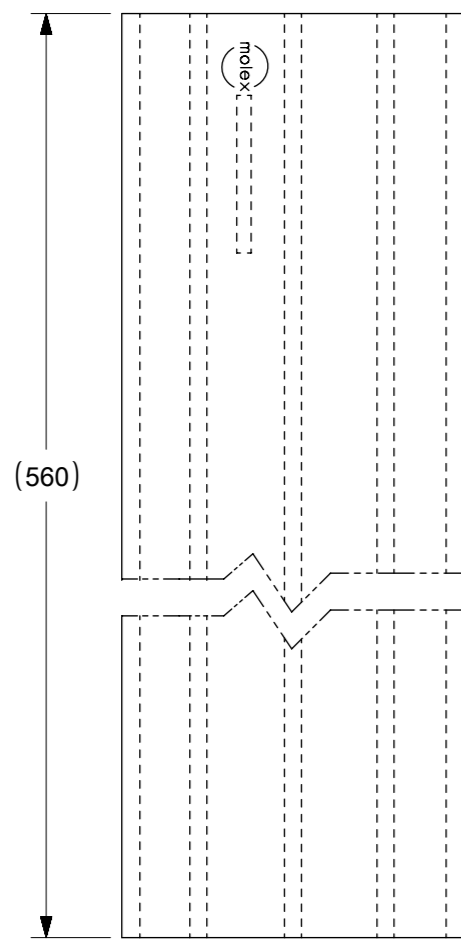
PART NO. LEGEND



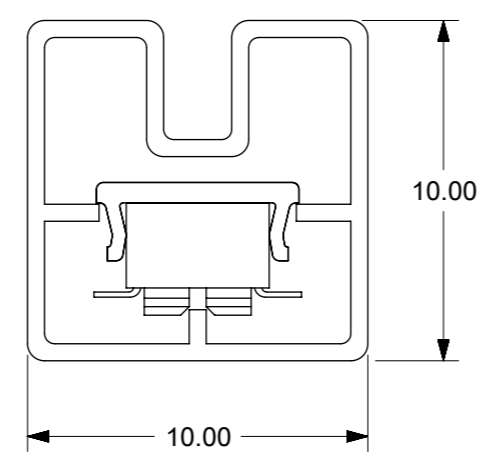
NOTES:

- FOR ILLUSTRATION PURPOSES, DRAWINGS SHOWS PART WITH 12 CIRCUIT SIZE
- PLATING:  
POST PLATING - SELECTIVE GOLD (SEE LEGEND) AT CONTACT AREA, AND 1.27µm MIN. SELECTIVE TIN AT SOLDER AREA BOTH OVER 1.27µm MIN. NICKEL OVERALL
- CO-PLANARITY OF P.C TAIL TO BE MEASURED BY RESTING THE PART ON A FLAT GAGE SURFACE.
- PRODUCT SPECIFICATION PS-87263 APPLIES
- CAP: HIGH TEMPERATURE THERMOPLASTIC, UL RATED 94V-0, SUITABLE FOR SURFACE-MOUNT SOLDERING PROCESS.  
COLOR: BLACK
- POSITION OF CAP TO BE CENTRAL WITH RESPECT TO DIMENSION "A"
- CONTACT FACTORY FOR DETAIL ON THIS PART NO.
- PARTS SHALL BE PACKED IN MOISTURE BARRIER BAG
- P/N 87263-3686 TO BE PACKED IN EMBOSSED TAPE TYPE B1
- PACKAGING SPECIFICATION FOR TAPE AND REEL: PK-87263-300

|   |        |                                    |         |                     |                 |  |              |
|---|--------|------------------------------------|---------|---------------------|-----------------|--|--------------|
| THIS DRAWING CONTAINS INFORMATION THAT IS PROPRIETARY TO MOLEX ELECTRONIC TECHNOLOGIES, LLC AND SHOULD NOT BE USED WITHOUT WRITTEN PERMISSION |        | CURRENT REV DESC: MIGRATED TO ECTR |         | <b>molex</b>        |                 |  |              |
| GENERAL TOLERANCES (UNLESS SPECIFIED)   |        | EC NO: 605777                      |         |                     |                 | MGRID, B/ENTRY RECEIPT.<br>2.80MM HT. W/LOC. PEGS W/CAP, SMT |              |
| 4 PLACES  | ±      | MM                                 | INCH    | DRWN: RMV02         | 2018/02/02      |  |              |
| 3 PLACES  | ±      |                                    |         | CHK'D: GJEEVANSURES | 2018/10/11      |  |              |
| 2 PLACES  | ± 0.2  |                                    |         | APPR: ISHWARG       | 2018/10/11      |  |              |
| 1 PLACE   | ±      |                                    |         | INITIAL REVISION:   |                 |  |              |
| 0 PLACES  | ±      |                                    |         | DRWN: JDK           | 1991/01/11      |  |              |
| ANGULAR TOL   | ± 3.0° |                                    |         | APPR: MLONG         | 2010/03/19      |  |              |
| DRAFT WHERE APPLICABLE MUST REMAIN WITHIN DIMENSIONS  |        | THIRD ANGLE PROJECTION             | DRAWING | SERIES              | MATERIAL NUMBER | CUSTOMER   | SHEET NUMBER |
|   |        |                                    | A3-SIZE | 87263               | SEE TABLE       | GENERAL MARKET   | 1 OF 4       |



P/N 87263-\*\*-2 \*

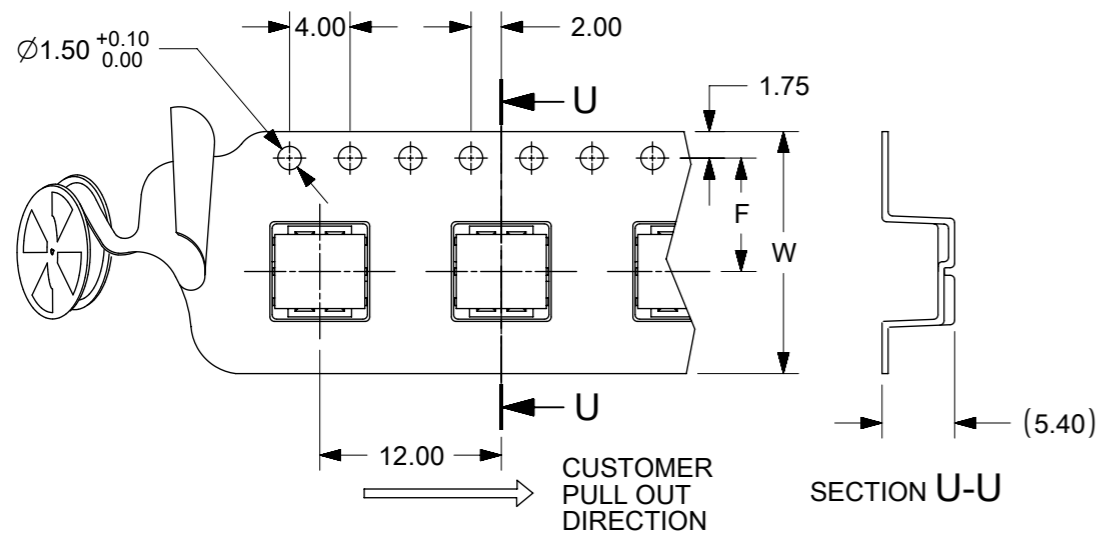


P/N 87263-\*\*-0 \*

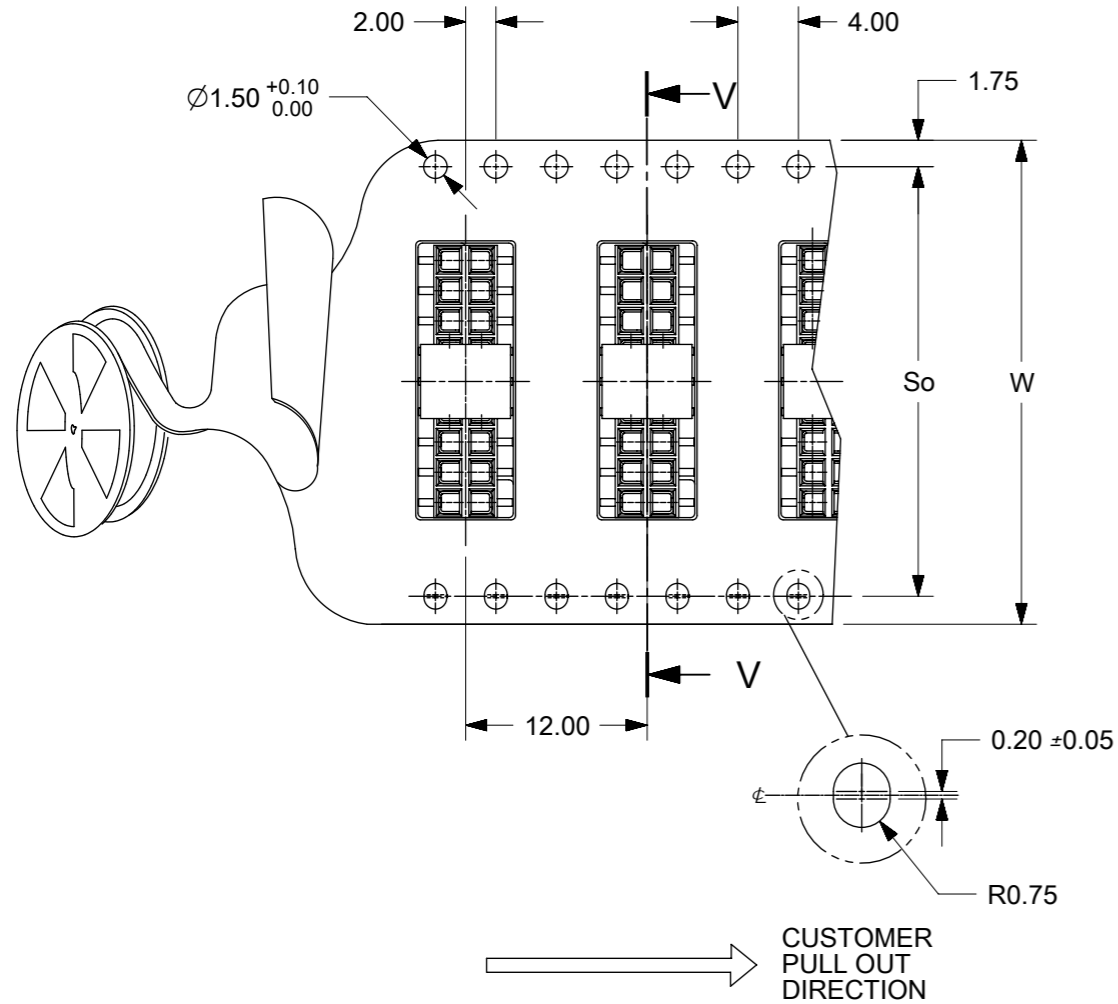
| CKT. SIZE | PART NO. FOR PARTS WITHOUT CAP | PART NO. FOR PARTS WITH CAP |
|-----------|--------------------------------|-----------------------------|
| 4         | 87263-042*                     | 87263-040*                  |
| 6         | 87263-062*                     | 87263-060*                  |
| 8         | 87263-082*                     | 87263-080*                  |
| 10        | 87263-102*                     | 87263-100*                  |
| 12        | 87263-122*                     | 87263-120*                  |
| 14        | 87263-142*                     | 87263-140*                  |
| 16        | 87263-162*                     | 87263-160*                  |
| 18        | 87263-182*                     | 87263-180*                  |
| 20        | 87263-202*                     | 87263-200*                  |
| 22        | 87263-222*                     | 87263-220*                  |
| 24        | 87263-242*                     | 87263-240*                  |
| 26        | 87263-262*                     | 87263-260*                  |
| 28        | 87263-282*                     | 87263-280*                  |
| 30        | 87263-302*                     | 87263-300*                  |
| 32        | 87263-322*                     | 87263-320*                  |
| 34        | 87263-342*                     | 87263-340*                  |
| 36        | 87263-362*                     | 87263-360*                  |
| 38        | 87263-382*                     | 87263-380*                  |
| 40        | 87263-402*                     | 87263-400*                  |
| 42        | 87263-422*                     | 87263-420*                  |
| 44        | △ 87263-442*                   | 87263-440*                  |

THIS DRAWING CONTAINS INFORMATION THAT IS PROPRIETARY TO MOLEX ELECTRONIC TECHNOLOGIES, LLC AND SHOULD NOT BE USED WITHOUT WRITTEN PERMISSION

|  |   |        |      |                                    |  |         |        |   |                |              |  |
|--|---|--------|------|------------------------------------|--|---------|--------|---|----------------|--------------|--|
| DIMENSION UNITS                                      |   | SCALE  |      | CURRENT REV DESC: MIGRATED TO ECTR |  |         |        |   |                |              |  |
| mm   |   | NTS    |      |                                    |  |         |        |   |                |              |  |
| GENERAL TOLERANCES (UNLESS SPECIFIED)                |   |        |      |                                    |  |         |        | <b>EC NO: 605777</b><br><b>DRWN: RMV02</b> 2018/02/02<br><b>CHK'D: GJEEVANSURES</b> 2018/10/11<br><b>APPR: ISHWARG</b> 2018/10/11 |                |              |  |
|  |   | MM     | INCH |                                    |  |         |        |   |                |              |  |
| 4 PLACES   | ± |        | ±    |                                    |  |         |        | <b>PRODUCT CUSTOMER DRAWING</b><br>MGRID, B/ENTRY RECEPT.<br>2.80MM HT. W/LOC. PEGS W/CAP, SMT                                    |                |              |  |
| 3 PLACES   | ± |        | ±    |                                    |  |         |        |   |                |              |  |
| 2 PLACES   | ± | 0.2    | ±    |                                    |  |         |        | DOCUMENT NUMBER: <b>SD-87263-XX2X</b><br>DOC TYPE: PSD<br>DOC PART: 001<br>REVISION: J12  |                |              |  |
| 1 PLACE  | ± |        | ±    |                                    |  |         |        |   |                |              |  |
| 0 PLACES   | ± |        | ±    |                                    |  |         |        |   |                |              |  |
| ANGULAR TOL  |   | ± 3.0° |      |                                    |  |         |        |   |                |              |  |
| DRAFT WHERE APPLICABLE MUST REMAIN WITHIN DIMENSIONS |   |        |      | THIRD ANGLE PROJECTION             |  | DRAWING | SERIES | MATERIAL NUMBER   | CUSTOMER       | SHEET NUMBER |  |
|  |   |        |      |                                    |  | A3-SIZE | 87263  | SEE TABLE   | GENERAL MARKET | 2 OF 4       |  |



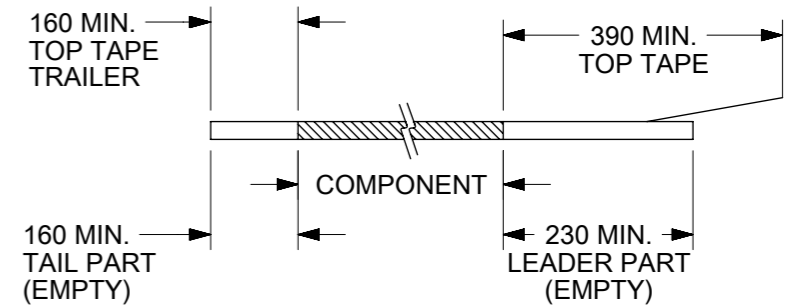
PART NO. 87263-\*\*9\* (CKTS 04 TO 16)  
SINGLE SPROCKET HOLE T/REEL - TYPE A



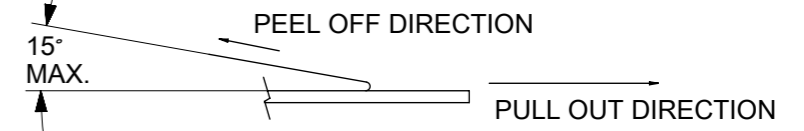
PART NO. 87263-\*\*9\* (CKTS 18 TO 40)  
DOUBLE SPROCKET HOLE T/REEL - TYPE B

| PART NO. FOR PARTS WITHOUT CAP IN T/REEL | PART NO. FOR PARTS WITH CAP IN T/REEL | CKT. SIZE | F    | So   | W    | T/REEL TYPE |   |
|--|---------------------------------------|-----------|------|------|------|-------------|---|
| 87263-048*                               | 87263-049*                            | 4         | 11.5 | ---- | 24   | A           |   |
| 87263-068*                               | 87263-069*                            | 6         | 11.5 | ---- | 24   |             |   |
| 87263-088*                               | 87263-089*                            | 8         | 11.5 | ---- | 24   |             |   |
| 87263-108*                               | 87263-109*                            | 10        | 11.5 | ---- | 24   |             |   |
| 87263-128*                               | 87263-129*                            | 12        | 11.5 | ---- | 24   |             |   |
| 87263-148*                               | 87263-149*                            | 14        | 11.5 | ---- | 24   |             |   |
| 87263-168*                               | 87263-169*                            | 16        | 11.5 | ---- | 24   |             |   |
| 87263-188*                               | 87263-189*                            | 18        | 14.2 | 28.4 | 32   |             | B |
| 87263-208*                               | 87263-209*                            | 20        | 20.2 | 40.4 | 44   |             |   |
| 87263-228*                               | 87263-229*                            | 22        | 20.2 | 40.4 | 44   |             |   |
| 87263-248*                               | 87263-249*                            | 24        | 20.2 | 40.4 | 44   |             |   |
| 87263-268*                               | 87263-269*                            | 26        | 20.2 | 40.4 | 44   |             |   |
| 87263-288*                               | 87263-289*                            | 28        | 20.2 | 40.4 | 44   |             |   |
| 87263-308*                               | 87263-309*                            | 30        | 20.2 | 40.4 | 44   |             |   |
| 87263-328*                               | 87263-329*                            | 32        | 26.2 | 52.4 | 56   |             |   |
| 87263-348*                               | 87263-349*                            | 34        | ---- | ---- | ---- |             |   |
| △ <sub>9</sub> 87263-368*                | 87263-369*                            | 36        | 26.2 | 52.4 | 56   |             |   |
| 87263-388*                               | 87263-389*                            | 38        | ---- | ---- | ---- |             |   |
| 87263-408*                               | 87263-409*                            | 40        | ---- | ---- | ---- |             |   |
| △ <sub>9</sub> 87263-3686                | ----                                  | 36        | 26.2 | 52.4 | 56   | B1          |   |

NOTES:  
1. LEADER AND TRAILER TAPE



2. PEELING OFF FORCE OF THE TOP TAPE: 20-80gf.  
(PEELING DIRECTION AS SHOWN IN FOLLOWING FIGURE)



3. PACKAGING STANDARD IS AS PER EIA-481.  
4. TAPE & REEL QUANTITY: EMBOSSED TYPE A & B = 1000PCS/REEL  
EMBOSSED TYPE B1 = 900PCS/REEL  
5. THE TAPE IS TREATED FOR ANTI-STATIC.

|   |        |                                    |         |  |                 |
|---|--------|------------------------------------|---------|--|-----------------|
| THIS DRAWING CONTAINS INFORMATION THAT IS PROPRIETARY TO MOLEX ELECTRONIC TECHNOLOGIES, LLC AND SHOULD NOT BE USED WITHOUT WRITTEN PERMISSION |        | CURRENT REV DESC: MIGRATED TO ECTR |         | <b>molex</b>   |                 |
| DIMENSION UNITS   | SCALE  |                                    |         |  |                 |
| mm  | NTS    |                                    |         | MGRID, B/ENTRY RECEIPT.<br>2.80MM HT. W/LOC. PEGS W/CAP, SMT |                 |
| GENERAL TOLERANCES (UNLESS SPECIFIED)   |        |                                    |         | PRODUCT CUSTOMER DRAWING                                     |                 |
| 4 PLACES  | ±      | MM                                 | INCH    | DOCUMENT NUMBER  |                 |
| 3 PLACES  | ±      |                                    |         | DOC TYPE   |                 |
| 2 PLACES  | ± 0.2  |                                    |         | DOC PART   |                 |
| 1 PLACE   | ±      |                                    |         | REVISION   |                 |
| 0 PLACES  | ±      |                                    |         | SD-87263-XX2X  |                 |
| ANGULAR TOL   | ± 3.0° |                                    |         | PSD  | 001             |
| DRAFT WHERE APPLICABLE MUST REMAIN WITHIN DIMENSIONS  |        | THIRD ANGLE PROJECTION             | DRAWING | SERIES   | MATERIAL NUMBER |
|   |        |                                    | A3-SIZE | 87263  | CUSTOMER        |
|   |        |                                    |         |  | GENERAL MARKET  |
|   |        |                                    |         |  | SHEET NUMBER    |
|   |        |                                    |         |  | 3 OF 4          |



## X-ON Electronics

Largest Supplier of Electrical and Electronic Components

*Click to view similar products for [Headers & Wire Housings](#) category:*

*Click to view products by [Molex](#) manufacturer:*

Other Similar products are found below :

[892-18-020-10-001101](#) [58102-G61-06LF](#) [582553-1](#) [0009485154](#) [009176003701906](#) [0050291907](#) [LY20-4P-DT1-P1E-BR](#) [02.125.8002.8](#)  
[609-3404](#) [61062-3](#) [61082-181009](#) [622-3653LF](#) [63453-116](#) [636-1030](#) [636-1427](#) [636-3427](#) [636-4007](#) [641938-9](#) [641991-4](#) [644827-2](#) [65817-](#)  
[010LF](#) [65817-015LF](#) [65863-015LF](#) [66207-023LF](#) [67095-007LF](#) [67601157](#) [68648-049](#) [70.362.1628.0](#) [70-4210](#) [70-4226B](#) [70-4853B](#) [707-](#)  
[5020](#) [707-5028](#) [71.350.2428.0](#) [71918-208LF](#) [71961-016LF](#) [733-134](#) [733-162](#) [754199-000](#) [760-3052](#) [787-8014-00](#) [79531-3000](#) [FCN-](#)  
[360C032-B](#) [FCN-367T-T012/H](#) [FCN-723D010/2](#) [80.063.4001.1](#) [800-90-001-10-001000](#) [800-90-010-10-002000](#) [801-43-002-10-013000](#)  
[801-43-006-10-002000](#)