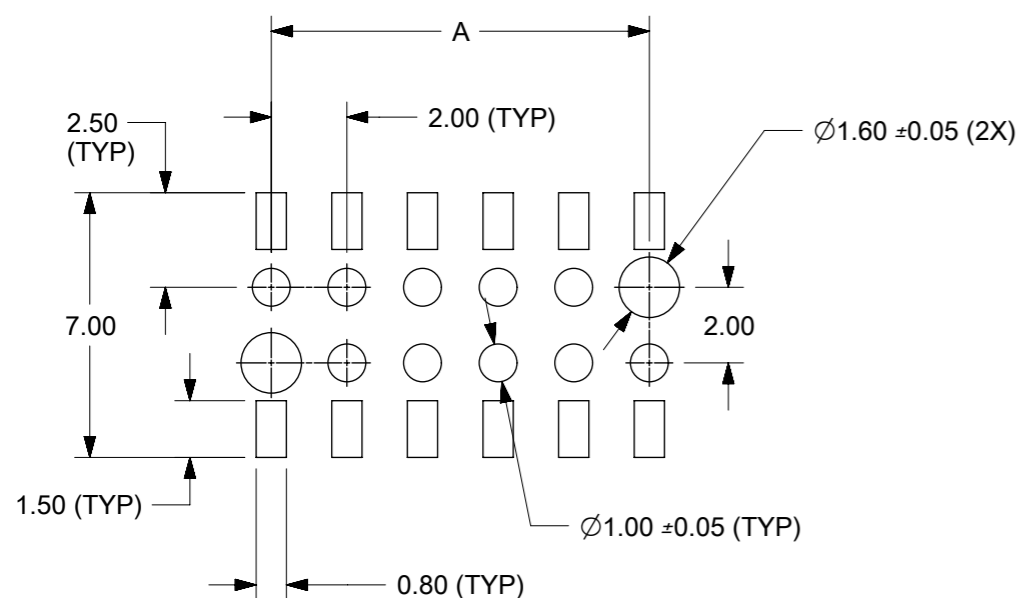


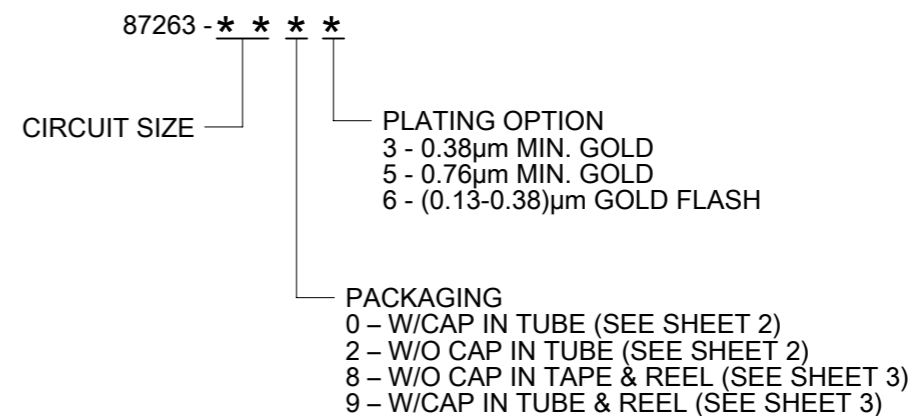
PARTS TO BE PACK WITH CAP (12 CKT SHOWN)



RECOMMENDED SOLDER PAD DESIGN

CKT. SIZE	DIM. A	DIM. B
4	2.00	4.00
6	4.00	6.00
8	6.00	8.00
10	8.00	10.00
12	10.00	12.00
14	12.00	14.00
16	14.00	16.00
18	16.00	18.00
20	18.00	20.00
22	20.00	22.00
24	22.00	24.00
26	24.00	26.00
28	26.00	28.00
30	28.00	30.00
32	30.00	32.00
34	32.00	34.00
36	34.00	36.00
38	36.00	38.00
40	38.00	40.00
42	40.00	42.00
44	42.00	44.00

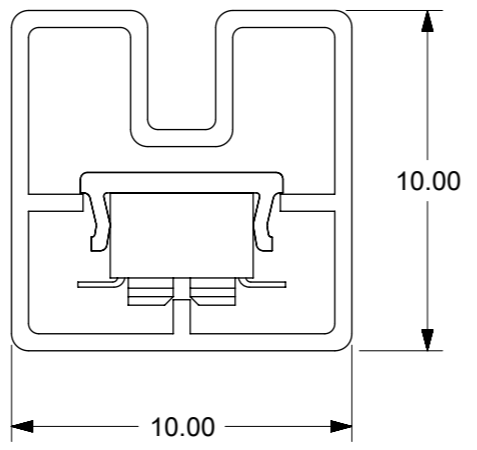
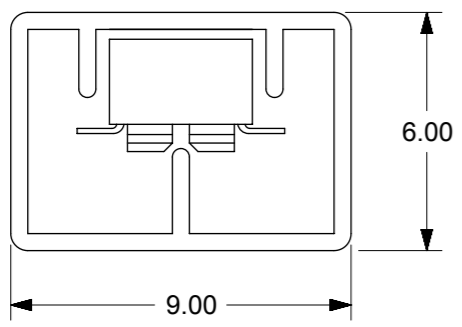
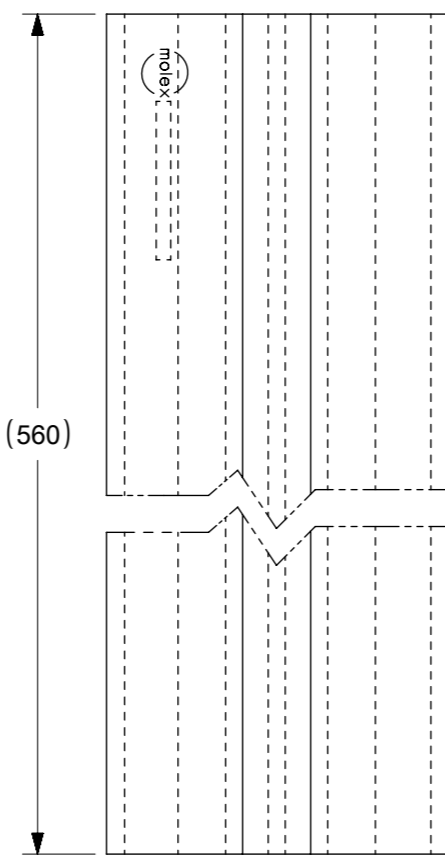
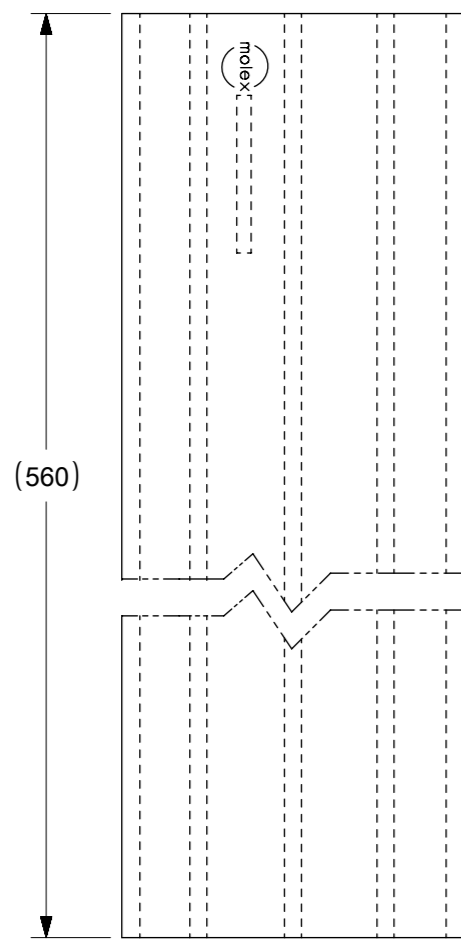
PART NO. LEGEND



NOTES:

- FOR ILLUSTRATION PURPOSES, DRAWINGS SHOWS PART WITH 12 CIRCUIT SIZE
- PLATING:
POST PLATING - SELECTIVE GOLD (SEE LEGEND) AT CONTACT AREA, AND 1.27µm MIN. SELECTIVE TIN AT SOLDER AREA BOTH OVER 1.27µm MIN. NICKEL OVERALL
- CO-PLANARITY OF P.C TAIL TO BE MEASURED BY RESTING THE PART ON A FLAT GAGE SURFACE.
- PRODUCT SPECIFICATION PS-87263 APPLIES
- CAP: HIGH TEMPERATURE THERMOPLASTIC, UL RATED 94V-0, SUITABLE FOR SURFACE-MOUNT SOLDERING PROCESS.
COLOR: BLACK
- POSITION OF CAP TO BE CENTRAL WITH RESPECT TO DIMENSION "A"
- CONTACT FACTORY FOR DETAIL ON THIS PART NO.
- PARTS SHALL BE PACKED IN MOISTURE BARRIER BAG
- P/N 87263-3686 TO BE PACKED IN EMBOSSED TAPE TYPE B1
- PACKAGING SPECIFICATION FOR TAPE AND REEL: PK-87263-300

THIS DRAWING CONTAINS INFORMATION THAT IS PROPRIETARY TO MOLEX ELECTRONIC TECHNOLOGIES, LLC AND SHOULD NOT BE USED WITHOUT WRITTEN PERMISSION		CURRENT REV DESC: MIGRATED TO ECTR		molex	
DIMENSION UNITS: mm NTS		SCALE: NTS			
GENERAL TOLERANCES (UNLESS SPECIFIED)		EC NO: 605777		MGRID, B/ENTRY RECEIPT.	
4 PLACES ±		DRWN: RMV02 2018/02/02		2.80MM HT. W/LOC. PEGS W/CAP, SMT	
3 PLACES ±		CHK'D: GJEEVANSURES 2018/10/11		PRODUCT CUSTOMER DRAWING	
2 PLACES ± 0.2		APPR: ISHWARG 2018/10/11		DOCUMENT NUMBER	
1 PLACE ±		INITIAL REVISION:		SD-87263-XX2X	
0 PLACES ±		DRWN: JDK 1991/01/11		DOC TYPE	
ANGULAR TOL ± 3.0°		APPR: MLONG 2010/03/19		PSD	
DRAFT WHERE APPLICABLE MUST REMAIN WITHIN DIMENSIONS		THIRD ANGLE PROJECTION		DOC PART	
		DRAWING: A3-SIZE		001	
		SERIES: 87263		REVISION: J12	
		MATERIAL NUMBER: SEE TABLE		SHEET NUMBER: 1 OF 4	
		CUSTOMER: GENERAL MARKET			



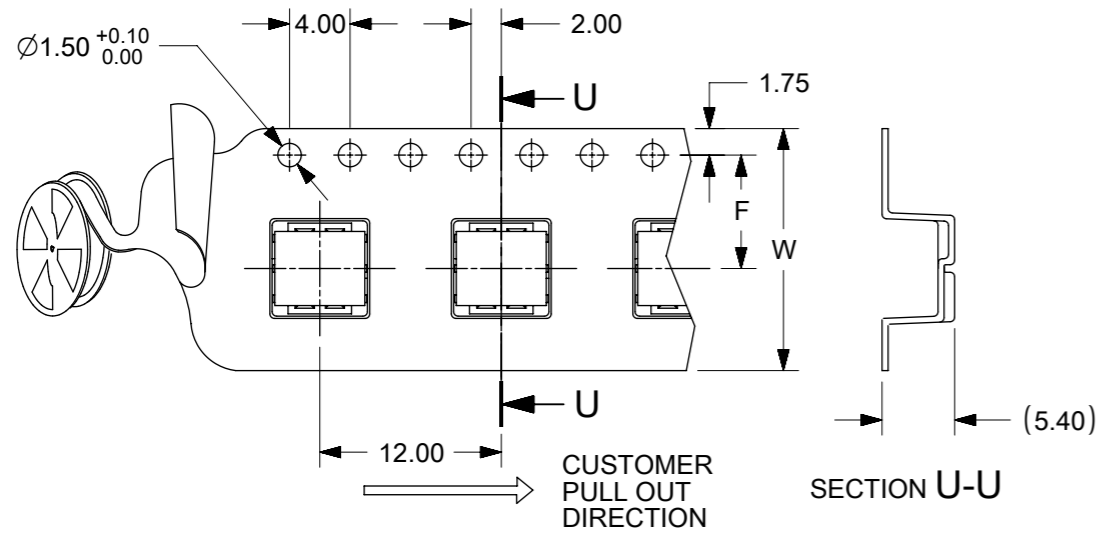
P/N 87263-**-2*

P/N 87263-**-0*

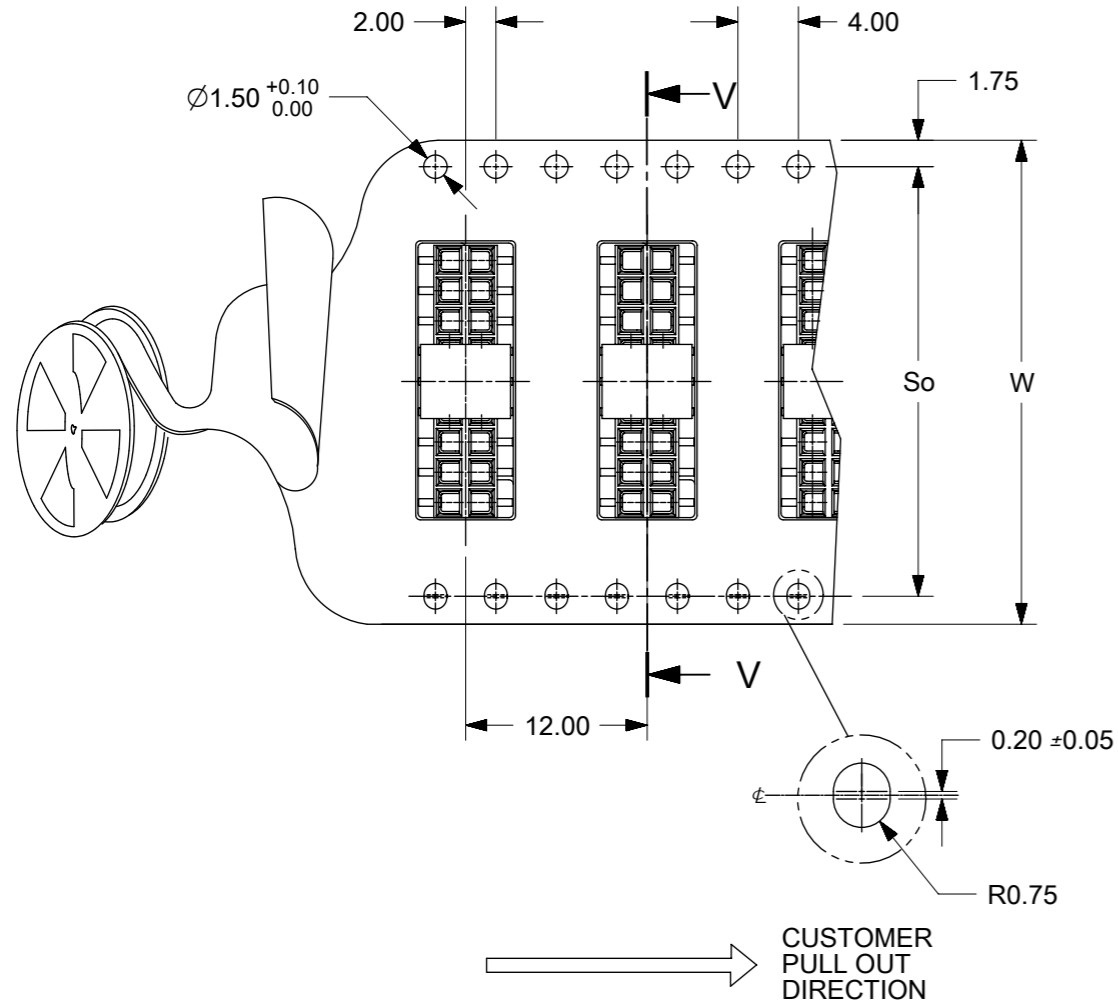
CKT. SIZE	PART NO. FOR PARTS WITHOUT CAP	PART NO. FOR PARTS WITH CAP
4	87263-042*	87263-040*
6	87263-062*	87263-060*
8	87263-082*	87263-080*
10	87263-102*	87263-100*
12	87263-122*	87263-120*
14	87263-142*	87263-140*
16	87263-162*	87263-160*
18	87263-182*	87263-180*
20	87263-202*	87263-200*
22	87263-222*	87263-220*
24	87263-242*	87263-240*
26	87263-262*	87263-260*
28	87263-282*	87263-280*
30	87263-302*	87263-300*
32	87263-322*	87263-320*
34	87263-342*	87263-340*
36	87263-362*	87263-360*
38	87263-382*	87263-380*
40	87263-402*	87263-400*
42	87263-422*	87263-420*
44	\triangle 87263-442*	87263-440*

THIS DRAWING CONTAINS INFORMATION THAT IS PROPRIETARY TO MOLEX ELECTRONIC TECHNOLOGIES, LLC AND SHOULD NOT BE USED WITHOUT WRITTEN PERMISSION

DIMENSION UNITS		SCALE		CURRENT REV DESC: MIGRATED TO ECTR		molex				
mm		NTS								
GENERAL TOLERANCES (UNLESS SPECIFIED)						MGRID, B/ENTRY RECEPT. 2.80MM HT. W/LOC. PEGS W/CAP, SMT				
		MM	INCH							
4 PLACES	±		±	EC NO: 605777		PRODUCT CUSTOMER DRAWING				
3 PLACES	±		±	DRWN: RMV02 2018/02/02						
2 PLACES	±	0.2	±	CHK'D: GJEEVANSURES 2018/10/11						
1 PLACE	±		±	APPR: ISHWARG 2018/10/11		DOCUMENT NUMBER: SD-87263-XX2X				
0 PLACES	±		±	INITIAL REVISION:						
ANGULAR TOL		± 3.0°		DRWN: JDK 1991/01/11		DOC TYPE	DOC PART	REVISION	PSD 001 J12	
DRAFT WHERE APPLICABLE MUST REMAIN WITHIN DIMENSIONS		THIRD ANGLE PROJECTION		DRAWING	SERIES	MATERIAL NUMBER	CUSTOMER	SHEET NUMBER		
				A3-SIZE	87263	SEE TABLE	GENERAL MARKET	2 OF 4		



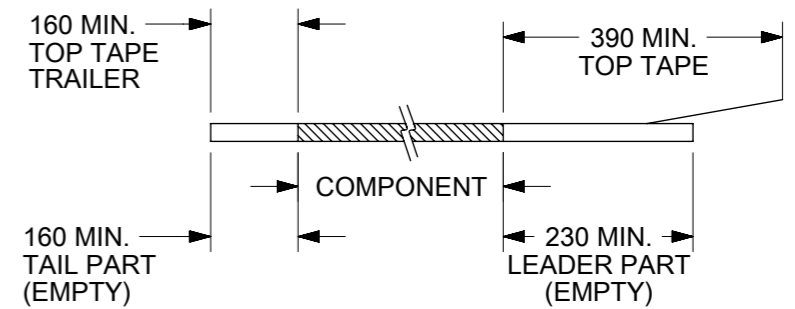
PART NO. 87263-**9* (CKTS 04 TO 16)
SINGLE SPROCKET HOLE T/REEL - TYPE A



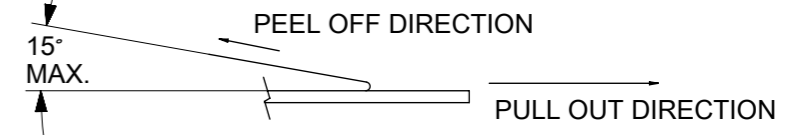
PART NO. 87263-**9* (CKTS 18 TO 40)
DOUBLE SPROCKET HOLE T/REEL - TYPE B

PART NO. FOR PARTS WITHOUT CAP IN T/REEL	PART NO. FOR PARTS WITH CAP IN T/REEL	CKT. SIZE	F	So	W	T/REEL TYPE	
87263-048*	87263-049*	4	11.5	----	24	A	
87263-068*	87263-069*	6	11.5	----	24		
87263-088*	87263-089*	8	11.5	----	24		
87263-108*	87263-109*	10	11.5	----	24		
87263-128*	87263-129*	12	11.5	----	24		
87263-148*	87263-149*	14	11.5	----	24		
87263-168*	87263-169*	16	11.5	----	24		
87263-188*	87263-189*	18	14.2	28.4	32		B
87263-208*	87263-209*	20	20.2	40.4	44		
87263-228*	87263-229*	22	20.2	40.4	44		
87263-248*	87263-249*	24	20.2	40.4	44		
87263-268*	87263-269*	26	20.2	40.4	44		
87263-288*	87263-289*	28	20.2	40.4	44		
87263-308*	87263-309*	30	20.2	40.4	44		
87263-328*	87263-329*	32	26.2	52.4	56		
87263-348*	87263-349*	34	----	----	----		
△ ₉ 87263-368*	87263-369*	36	26.2	52.4	56		
87263-388*	87263-389*	38	----	----	----		
87263-408*	87263-409*	40	----	----	----		
△ ₉ 87263-3686	----	36	26.2	52.4	56	B1	

NOTES:
1. LEADER AND TRAILER TAPE



2. PEELING OFF FORCE OF THE TOP TAPE: 20-80gf.
(PEELING DIRECTION AS SHOWN IN FOLLOWING FIGURE)



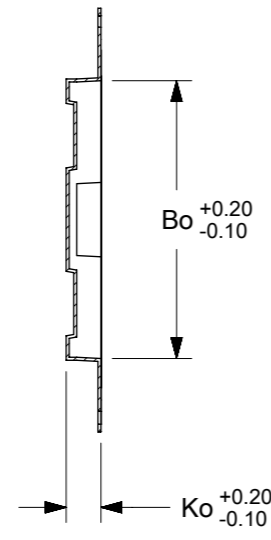
3. PACKAGING STANDARD IS AS PER EIA-481.
4. TAPE & REEL QUANTITY: EMBOSSED TYPE A & B = 1000PCS/REEL
EMBOSSED TYPE B1 = 900PCS/REEL
5. THE TAPE IS TREATED FOR ANTI-STATIC.

THIS DRAWING CONTAINS INFORMATION THAT IS PROPRIETARY TO MOLEX ELECTRONIC TECHNOLOGIES, LLC AND SHOULD NOT BE USED WITHOUT WRITTEN PERMISSION

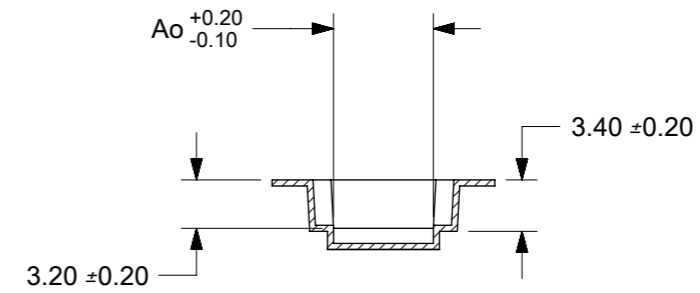
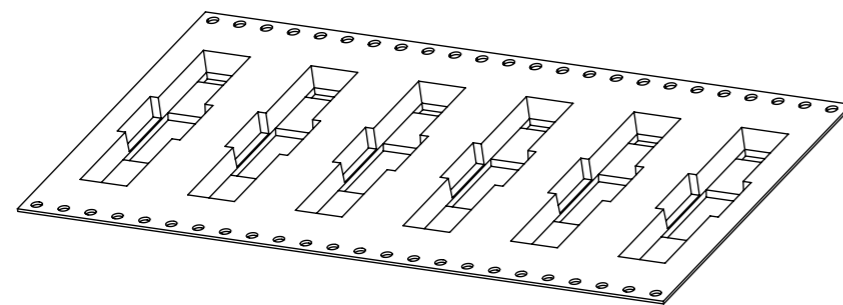
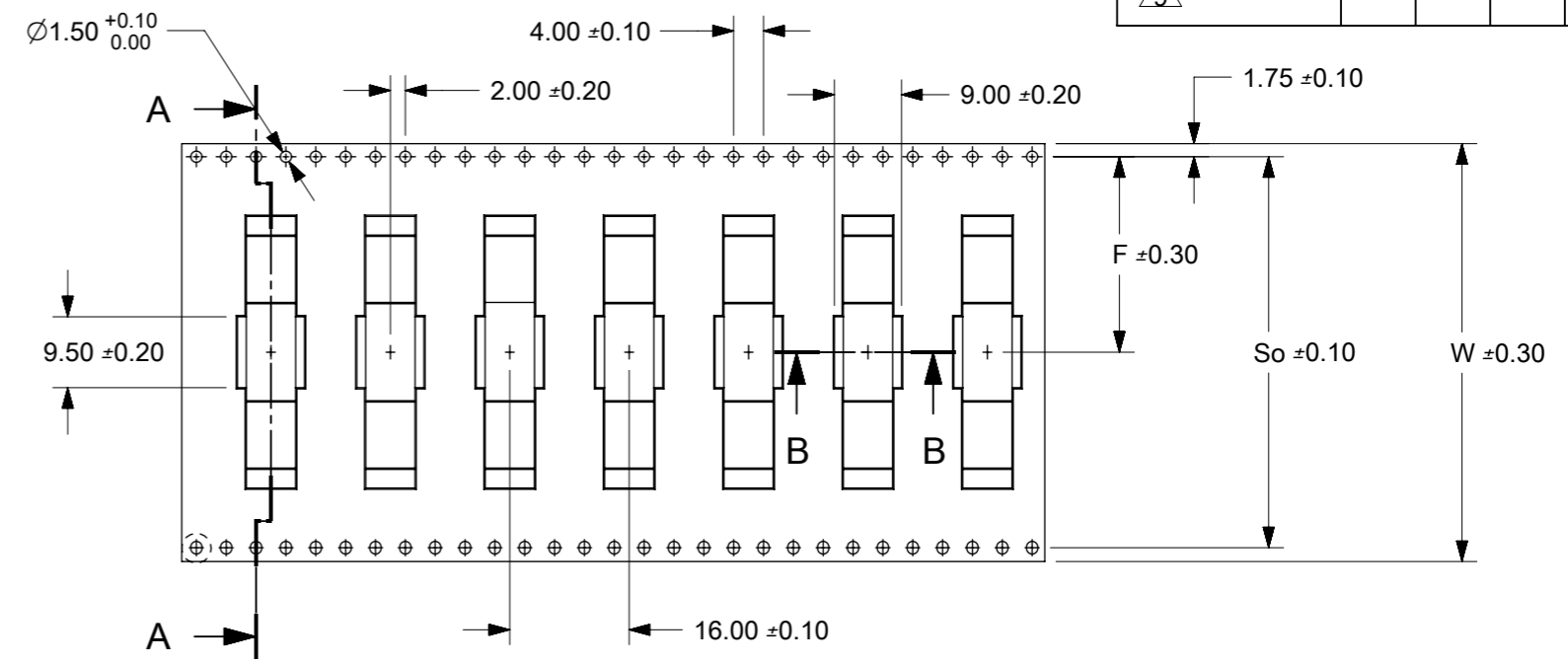
DIMENSION UNITS	SCALE	CURRENT REV DESC: MIGRATED TO ECTR		molex			
mm	NTS						
GENERAL TOLERANCES (UNLESS SPECIFIED)		EC NO: 605777		MGRID, B/ENTRY RECEIPT. 2.80MM HT. W/LOC. PEGS W/CAP, SMT			
4 PLACES	±	DRWN: RMV02	2018/02/02				
3 PLACES	±	CHK'D: GJEEVANSURES	2018/10/11	PRODUCT CUSTOMER DRAWING			
2 PLACES	± 0.2	APPR: ISHWARG	2018/10/11				
1 PLACE	±	INITIAL REVISION:		DOCUMENT NUMBER			
0 PLACES	±	DRWN: JDK	1991/01/11				SD-87263-XX2X
ANGULAR TOL	± 3.0°	APPR: MLONG	2010/03/19	DOC TYPE	DOC PART	REVISION	
DRAFT WHERE APPLICABLE MUST REMAIN WITHIN DIMENSIONS		THIRD ANGLE PROJECTION	DRAWING	SERIES	MATERIAL NUMBER	CUSTOMER	SHEET NUMBER
			A3-SIZE	87263	SEE TABLE	GENERAL MARKET	3 OF 4

T/REEL TYPE B1

PART WITHOUT CAP IN T&R	CKT SIZE	Bo	Ko	Ao
△ 87263-3686	36	36.40	5.00	6.60



SECTION A-A



SECTION B-B

THIS DRAWING CONTAINS INFORMATION THAT IS PROPRIETARY TO MOLEX ELECTRONIC TECHNOLOGIES, LLC AND SHOULD NOT BE USED WITHOUT WRITTEN PERMISSION									
DIMENSION UNITS		SCALE		CURRENT REV DESC: MIGRATED TO ECTR					
mm		NTS		<div style="text-align: center;">molex</div> <p>MGRID, B/ENTRY RECEPT. 2.80MM HT. W/LOC. PEGS W/CAP, SMT</p> <p>PRODUCT CUSTOMER DRAWING</p>					
GENERAL TOLERANCES (UNLESS SPECIFIED)									
	MM	INCH							
4 PLACES	±								
3 PLACES	±								
2 PLACES	±	0.2	±	EC NO: 605777	DRWN: RMV02	2018/02/02			
1 PLACE	±			CHK'D: GJEEVANSURES	2018/10/11				
0 PLACES	±			APPR: ISHWARG	2018/10/11				
ANGULAR TOL ± 3.0°				INITIAL REVISION:					
DRAFT WHERE APPLICABLE MUST REMAIN WITHIN DIMENSIONS				DRWN: JDK		1991/01/11			
				APPR: MLONG		2010/03/19			
THIRD ANGLE PROJECTION		DRAWING		SERIES		MATERIAL NUMBER		CUSTOMER	
		A3-SIZE		87263		SEE TABLE		GENERAL MARKET	
DOCUMENT NUMBER		DOC TYPE		DOC PART		REVISION			
SD-87263-XX2X		PSD		001		J12			
SHEET NUMBER									
4 OF 4									

DOCUMENT STATUS	P1	RELEASE DATE	2018/10/11	12:17:35
-----------------	----	--------------	------------	----------

X-ON Electronics

Largest Supplier of Electrical and Electronic Components

Click to view similar products for [Headers & Wire Housings](#) category:

Click to view products by [Molex](#) manufacturer:

Other Similar products are found below :

[95000-104TRLF](#) [10135584-644402LF](#) [DF62W-EP2022PCA](#) [95000-106TRLF](#) [DF62W-2022SCA](#) [DF62W-EP2022PC](#) [2203348](#) [DF62W-2022SC](#) [1084018](#) [1029039](#) [1084017](#) [802-10-012-10-002000](#) [1112640](#) [1112639](#) [891-007-9SS-BST1T](#) [000-34000](#) [0008550134](#) [0009482033](#) [0009507031](#) [57102-F02-18ULF](#) [57102-S06-03LF](#) [57202-S52-04LF](#) [PCN6-15S-2.5E](#) [0039019024](#) [58102-G61-06LF](#) [582553-1](#) [0009485154](#) [0009508121](#) [0022285053](#) [0050291907](#) [018731A](#) [LY20-4P-DT1-P1E-BR](#) [02.125.8002.8](#) [60101931](#) [60598-1 \(Cut Strip\)](#) [M1625-3R/100](#) [61062-3](#) [61082-181009](#) [CSU011177004](#) [636-1427](#) [638009-1](#) [641938-9](#) [641991-4](#) [644168-1](#) [644827-2](#) [647662-1](#) [65039-019ELF](#) [65692-001LF](#) [65781-018](#) [65781-047](#)