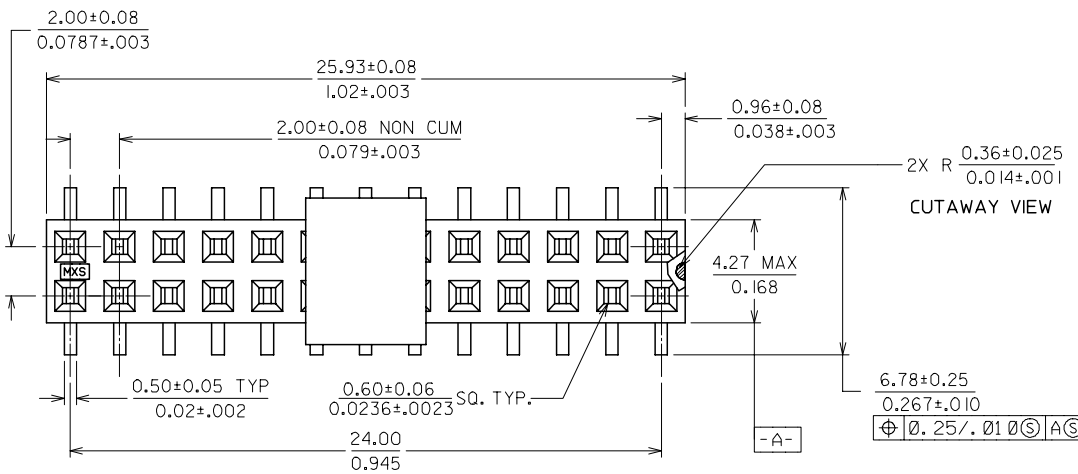
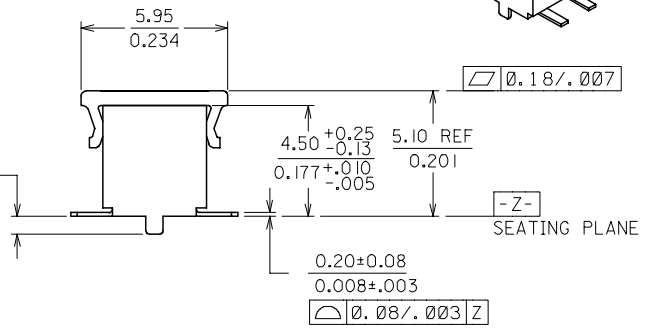
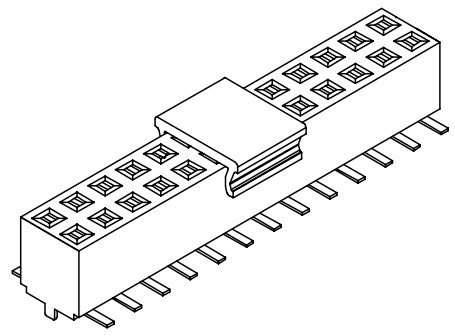


PART NUMBER	COVER	PACKAGING
87381-8207	NO	TUBE
87381-8217	YES	TUBE
87381-8227	YES	T/REEL

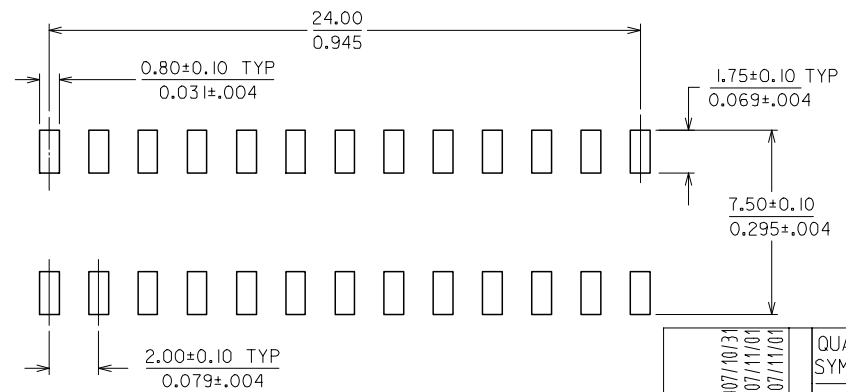


2X R 0.36±0.025
0.014±.001
CUTAWAY VIEW

6.78±0.25
0.267±.010
⊕ 0.25/.01 Ⓢ AⓈ



- NOTES:
- PLATING OPTIONS
0.76um/30uin MIN. GOLD IN CONTACT AREA
2.54um/100uin MIN. TIN IN SOLDER TAIL AREA
BOTH OVER 1.27um/50uin MIN. NICKEL OVERALL
 - PRODUCT SPECIFICATION PS-87380 APPLIES
 - COPLANARITY OF SOLDER TAIL IS TO BE MEASURED BY RESTING THE PART ON A FLAT GAUGE SURFACE
 - SECONDARY DIMENSIONS FOR REFERENCE ONLY
 - PARTS SHALL BE PACKED IN MOISTURE BARRIER BAG.



RECOMMENDED PCB LAYOUT

ADD NOTE 5.

EC NO: S2008-0281	2007/10/31
DRWNS:KANG	2007/11/01
CHKD:ATSEE	2007/11/01
APPR:MLONG	2007/11/01

REV	DESCRIPTION
1	

QUALITY SYMBOLS	
▽=0	
▽=0	

GENERAL TOLERANCES (UNLESS SPECIFIED)	
mm	INCH
4 PLACES ±---	±---
3 PLACES ±---	±.005
2 PLACES ±0.13	±---
1 PLACE ±---	±---
ANGULAR ± 3 °	

DIMENSION STYLE		SCALE	DESIGN UNITS	THIRD ANGLE PROJECTION	
MM/IN		NTS	METRIC		
DRAWN BY	DATE	TITLE			
G0H	1996/04/16	MGRID, TOP ENTRY RECEPT.			
CHECKED BY	DATE	26 CKTS, 4.50MM HT.			
GMS	1996/04/16	WITH PEG, SMT			
APPROVED BY	DATE	MOLEX INCORPORATED			
RWONG	1996/04/16	MOLEX INCORPORATED			
MATERIAL NO.	DOCUMENT NO.	SHEET NO.			
	SD-87381-820*	1 OF 2			
DRAFT WHERE APPLICABLE MUST REMAIN WITHIN DIMENSIONS					
SEE TABLE					
THIS DRAWING CONTAINS INFORMATION THAT IS PROPRIETARY TO MOLEX INCORPORATED AND SHOULD NOT BE USED WITHOUT WRITTEN PERMISSION					

10 9 8 7 6 5 4 3 2 1

F

E

D

C

B

A

F

E

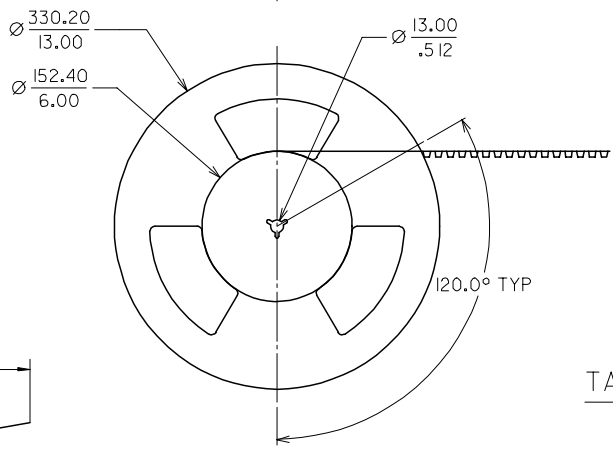
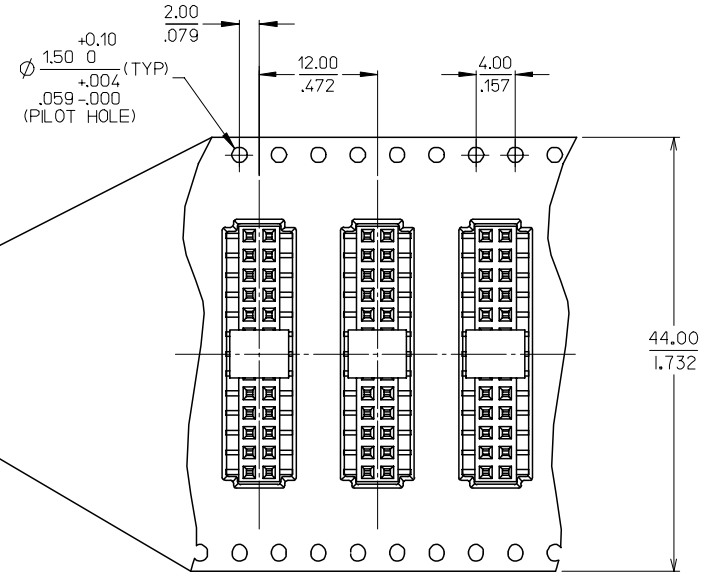
D

C

B

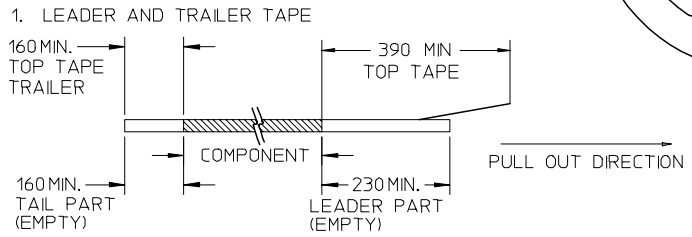
A

CUSTOMER PULL OUT DIRECTION

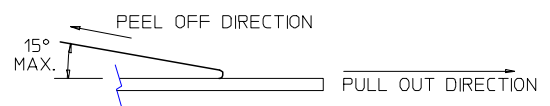


TAPE AND REEL ORIENTATION

NOTES:



2. PEELING OFF FORCE OF THE TOP TAPE: 20-80gf.
(PEELING DIRECTION AS SHOWN IN FOLLOWING FIGURE)



3. PACKAGING STANDARD IS AS PER EIA-481.
4. TAPE & REEL QUANTITY = 1000 PCS/REEL

ADD NOTE 5. EC NO: S2008-0281 DRWNS:KANG CHKD:ATSEE APPR:MLONG	2007/10/31 2007/11/01 2007/11/01	QUALITY SYMBOLS ▽=0 ▽C=0	GENERAL TOLERANCES (UNLESS SPECIFIED)		DIMENSION STYLE MM/IN		SCALE NTS	DESIGN UNITS METRIC	THIRD ANGLE PROJECTION		
				mm	INCH	DRAWN BY GOH	DATE 1996/04/16	TITLE MGRID, TOP ENTRY RECEPT. 26 CKTS, 4.50MM HT. WITH PEG, SMT	MOLEX INCORPORATED		
				4 PLACES ± --- ± ---	3 PLACES ± --- ± .005	CHECKED BY GMS	DATE 1996/04/16				
				2 PLACES ± 0.13 ± ---	1 PLACE ± --- ± ---	APPROVED BY RWONG	DATE 1996/04/16				
			ANGULAR ± 3 °	DRAFT WHERE APPLICABLE MUST REMAIN WITHIN DIMENSIONS		SEE TABLE		MATERIAL NO.	DOCUMENT NO. SD-87381-820*	SHEET NO. 2 OF 2	

9 8 7 6 5 4 3 2 1

X-ON Electronics

Largest Supplier of Electrical and Electronic Components

Click to view similar products for [Headers & Wire Housings](#) category:

Click to view products by [Molex](#) manufacturer:

Other Similar products are found below :

[0009485154](#) [0009624107](#) [0009652039](#) [0010894262](#) [00136](#) [0014563224](#) [0015477550](#) [0015917081](#) [00201300061](#) [0022102161](#) [0022173172](#)
[0022173242](#) [0022283030](#) [0026482241](#) [0026604103](#) [0039026044](#) [0039036124](#) [0050291907](#) [0050304461](#) [0050361796](#) [0050650112](#) [005093X](#)
[005758D](#) [005759B](#) [008263021200000+](#) [008263021200001+](#) [008263031200000+](#) [008263041200000+](#) [008263061200000+](#)
[008283021100000+](#) [008283021200000+](#) [008283041200000+](#) [008283061100000+](#) [008283061200000+](#) [008283081200000+](#)
[008283161310000+](#) [008283161400000+](#) [008370127000800](#) [008370151000800+](#) [008370167001800+](#) [008370217000800+](#) [008380026002010](#)
[008380050002010](#) [008383010000010](#) [008426-000](#) [009021041100339](#) [009021061200339](#) [009021101200339](#) [009021121200339](#)
[009021142200339](#)