

PLEASE CHECK WWW.MOLEX.COM FOR LATEST PART INFORMATION

Part Number: [0988171030](#)
Status: **Active**
Overview: NSCC - New Standard Casing Contact
Description: NSCC Single Part, Unsealed, 1.50mm, Female Housing, 3.33mm Pitch NSCC, Wire-to-Wire, 3 Circuits, White

Documents:

3D Model	Application Specification 988210001-PS-CH-001 (PDF)
Drawing (PDF)	Application Specification AS-98821-001-001 (PDF)
Product Specification PS-98821-001-001 (PDF)	Packaging Specification PK-31301-635-001 (PDF)
Application Specification 988210001-AS-CH-001 (PDF)	RoHS Certificate of Compliance (PDF)

Application tooling part link

Application Tooling Part Link 63813-3800

General

Product Family	Crimp Housings
Series	98817
Application	Power, Wire-to-Wire
Overview	NSCC - New Standard Casing Contact
Product Name	NSCC
UPC	822348760916

Physical

Breakaway	No
Circuits (maximum)	3
Circuits Detail	3 x 1.5mm female terminals
Color - Resin	White
Gender	Receptacle
Glow-Wire Capable	No
Keying to Mating Part	Yes
Lock to Mating Part	Yes
Material - Resin	Polyester
Net Weight	2.150/g
Number of Rows	1
Packaging Type	Carton
Panel Mount	No
Pitch - Mating Interface	3.33mm
Pitch - Termination Interface	3.33mm
Polarized to Mating Part	Yes
Ports	1
Temperature Range - Operating	-40° to +100°C

Electrical

Current - Maximum per Contact 10.0A

Solder Process Data

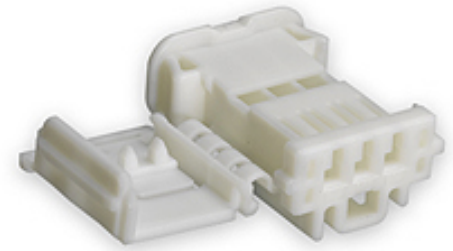
Lead-free Process Capability N/A

Material Info

Engineering Number 010109329

Reference - Drawing Numbers

Application Specification	988210001-AS-CH-001, 988210001-PS-CH-001, AS-98821-001-001
Packaging Specification	PK-31301-635-001



Series image - Reference only

EU ELV

Compliant

EU RoHS

Compliant

REACH SVHC

Not Contained Per -
D(2021)4569-DC (8
July 2021)

Halogen-Free

Status

Low-Halogen

For more information, please visit [Contact US](#)

China ROHS

ELV

RoHS Phthalates

China RoHS

Green Image

Compliant

Not Contained

Search Parts in this Series

[98817 Series](#)

Mates With

[988221030 Male Receptacle Housing](#)

Use With

Female Terminal NSCC [988971109](#) ,
[988971119](#) , [988971129](#) or FCI Female
Terminal 1.5 Sicma 3

Application Tooling | FAQ

Tooling specifications and manuals are found by selecting the products below. Crimp Height Specifications are then contained in the Application Tooling Specification document.

Global

Description

Product #

Extractor Tool for Unsealed Receptacle Connectors	638133800
---------------------------------------------------	---------------------------

This document was generated on 10/07/2021

PLEASE CHECK WWW.MOLEX.COM FOR LATEST PART INFORMATION

X-ON Electronics

Largest Supplier of Electrical and Electronic Components

Click to view similar products for [Automotive Connectors](#) category:

Click to view products by [Molex](#) manufacturer:

Other Similar products are found below :

[003-018-000](#) [60403001](#) [60993906-B](#) [M902-2131](#) [M902-2161](#) [72.330.1035.1](#) [73.353.4028.0](#) [F119300-B](#) [F166900](#) [F258300-B](#) [F358300-B](#)
[F407400](#) [F444110](#) [F487000](#) [F509500B-B](#) [827153-1](#) [8N1515-32-24P](#) [9-1326729-8](#) [925474-1](#) [928905-1](#) [964562-4](#) [968782-1](#) [GT17SA-8DS-](#)
[HU](#) [98891-1012](#) [98947-1016](#) [12004475-L](#) [12010290](#) [12010309-B](#) [12015454](#) [12020219-B](#) [12020308](#) [12041318-B](#) [12052225-L](#) [12052466](#)
[12059125](#) [12064869](#) [12004327-B](#) [12010503-B](#) [12015308](#) [12015384](#) [12015909](#) [1-21030-1](#) [12041254](#) [12041318](#) [12047946-B](#) [12047957](#)
[12047957-L](#) [12059473](#) [12066261](#) [12110546](#)