

**PLEASE CHECK WWW.MOLEX.COM FOR LATEST PART INFORMATION**

**Part Number:** **0988221030**  
**Status:** **Active**  
**Overview:** NSCC - New Standard Casing Contact  
**Description:** NSCC 3.33mm Pitch Male Pin Connector, Non-Sealed, 3 Circuits, White

**Documents:**

<a href="#">3D Model</a>	<a href="#">Application Specification 988210001-PS-CH-001 (PDF)</a>
<a href="#">Drawing (PDF)</a>	<a href="#">Application Specification AS-98821-001-001 (PDF)</a>
<a href="#">Product Specification PS-98821-001-001 (PDF)</a>	<a href="#">Packaging Specification PK-31301-635-001 (PDF)</a>
<a href="#">Application Specification 988210001-AS-CH-001 (PDF)</a>	<a href="#">RoHS Certificate of Compliance (PDF)</a>

**Application tooling part link**

Application Tooling Part Link 63813-3800

**General**

Product Family	Crimp Housings
Series	<a href="#">98822</a>
Application	Wire-to-Wire
Overview	<a href="#">NSCC - New Standard Casing Contact</a>
Product Name	NSCC
UPC	822348816989

**Physical**

Circuits (maximum)	3
Circuits Detail	3
Color - Resin	White
Gender	Plug
Glow-Wire Capable	No
Lock to Mating Part	Yes
Material - Resin	PBT
Net Weight	4.740/g
Number of Rows	1
Packaging Type	Carton
Panel Mount	No
Pitch - Mating Interface	3.33mm
Polarized to Mating Part	Yes
Stackable	No
Temperature Range - Operating	-40° to +85°C

**Electrical**

Current - Maximum per Contact 10.0A

**Solder Process Data**

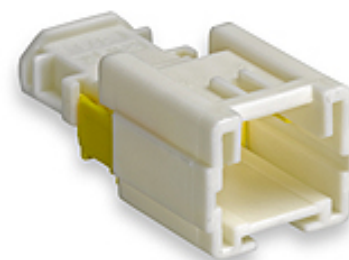
Lead-free Process Capability N/A

**Material Info**

Engineering Number 07619EV3F9

**Reference - Drawing Numbers**

Application Specification	988210001-AS-CH-001, 988210001-PS-CH-001, AS-98821-001-001
Packaging Specification	PK-31301-635-001
Product Specification	PS-98821-001-001
Sales Drawing	SD-98822-003-001



*Series image - Reference only*

**EU ELV**

**Compliant**

**EU RoHS**

**Compliant**

**REACH SVHC**

Not Contained Per - D(2021)4569-DC (8 July 2021)

**Halogen-Free**

**Status**

**Not Relevant**

For more information, please visit [Contact US](#)

China ROHS

ELV

RoHS Phthalates

**China RoHS**

Not Relevant

Compliant

Not Contained

**Search Parts in this Series**

[98822](#) Series

**Mates With**

[98817](#) NSCC 3.33mm Pitch Female Housing

**Use With**

1.50mm Size FCI SICMA Male Terminal

**Application Tooling | [FAQ](#)**

*Tooling specifications and manuals are found by selecting the products below. Crimp Height Specifications are then contained in the Application Tooling Specification document.*

**Global**

<b>Description</b>	<b>Product #</b>
--------------------	------------------

Extractor Tool for Unsealed Receptacle Connectors	<a href="#">638133800</a>
---	---------------------------

This document was generated on 10/04/2021

**PLEASE CHECK [WWW.MOLEX.COM](http://WWW.MOLEX.COM) FOR LATEST PART INFORMATION**

## X-ON Electronics

Largest Supplier of Electrical and Electronic Components

*Click to view similar products for [Automotive Connectors](#) category:*

*Click to view products by [Molex](#) manufacturer:*

Other Similar products are found below :

[003-018-000](#) [60403001](#) [60993906-B](#) [M902-2131](#) [M902-2161](#) [72.330.1035.1](#) [73.353.4028.0](#) [F119300-B](#) [F166900](#) [F258300-B](#) [F358300-B](#)  
[F407400](#) [F444110](#) [F487000](#) [F509500B-B](#) [827153-1](#) [8N1515-32-24P](#) [9-1326729-8](#) [925474-1](#) [928905-1](#) [964562-4](#) [968782-1](#) [GT17SA-8DS-](#)  
[HU](#) [98891-1012](#) [98947-1016](#) [12004475-L](#) [12010290](#) [12010309-B](#) [12015454](#) [12020219-B](#) [12020308](#) [12041318-B](#) [12052225-L](#) [12052466](#)  
[12059125](#) [12064869](#) [12004327-B](#) [12010503-B](#) [12015308](#) [12015384](#) [12015909](#) [1-21030-1](#) [12041254](#) [12041318](#) [12047946-B](#) [12047957](#)  
[12047957-L](#) [12059473](#) [12066261](#) [12110546](#)