

Surface Mount Schottky Barrier rectifiers

Using the Schottky Barrier principle with a Molybdenum barrier meta. These state-of-the-art geometry features epitaxial construction with oxide passivation and metal overlay contact. Ideally suited for low voltage, high frequency rectification, or as free wheeling and polarity protection diodes, in surface mount applications where compact size and weight are critical to the system.

Features

- * Low Forward Voltage.
- * Low Switching noise.
- * High Current Capacity
- * Guarantee Reverse Avalanche.
- * Guard-Ring for Stress Protection.
- * Low Power Loss & High efficiency.
- * 125 Operating Junction Temperature
- * Low Stored Charge Majority Carrier Conduction.
- * Plastic Material used Carries Underwriters Laboratory Flammability Classification 94V-O



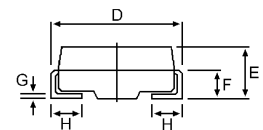
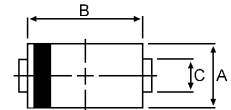
* In compliance with EU RoHs 2002/95/EC directives

SCHOTTKY BARRIER RECTIFIERS

**3.0 AMPERES
20-60 VOLTS**



DO-214AC(SMA)



DIM	MILLIMETERS	
	MIN	MAX
A	2.20	2.80
B	4.10	4.70
C	1.30	1.70
D	4.70	5.30
E	1.90	2.50
F		1.30
G		0.30
H	0.95	1.50

MAXIMUM RATINGS

Characteristic	Symbol	SK32	SK33	SK34	SK35	SK36	Unit
Peak Repetitive Reverse Voltage Working Peak Reverse Voltage DC Blocking Voltage	V_{RRM} V_{RWM} V_R	20	30	40	50	60	V
RMS Reverse Voltage	$V_{R(RMS)}$	14	21	28	35	42	V
Average Rectifier Forward Current	I_o	3.0					A
Non-Repetitive Peak Surge Current (Surge applied at rate load conditions halfwave, single phase, 60Hz)	I_{FSM}	70					A
Operating and Storage Junction Temperature Range	T_J, T_{STG}	-65 to +125					

ELECTRIAL CHARACTERISTICS

Characteristic	Symbol	SK32	SK33	SK34	SK35	SK36	Unit
Maximum Instantaneous Forward Voltage ($I_F = 3$ Amp)	V_F	0.55		0.70			V
Maximum Instantaneous Reverse Current (Rated DC Voltage, $T_C = 25$) (Rated DC Voltage, $T_C = 125$)	I_R			0.5 20			mA
Maximum Thermal Resistance Junction to Lead (Note.1)	R_{thjL}			36			/W
Maximum Thermal Resistance Junction to Ambient	R_{thjA}			60.0			/W
Typical Junction Capacitance (Reverse Voltage of 4 volts & $f=1$ MHz)	C_P	210		180			pF

Note:

1. Mounted 1 inch square PCB

CASE---
Transfer molded
plastic

POLARITY---
Cathode indicated
polarity band

SK32 thru SK36

FIG-1 FORWARD CURRENT DERATING CURVE

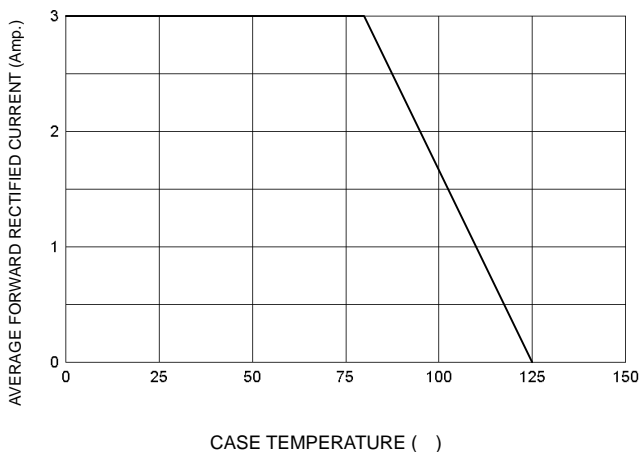


FIG-2 TYPICAL FORWARD CHARACTERISTICS

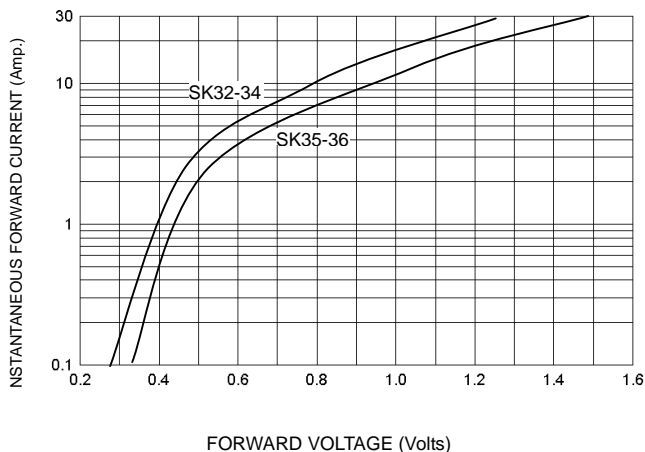


FIG-3 TYPICAL REVERSE CHARACTERISTICS

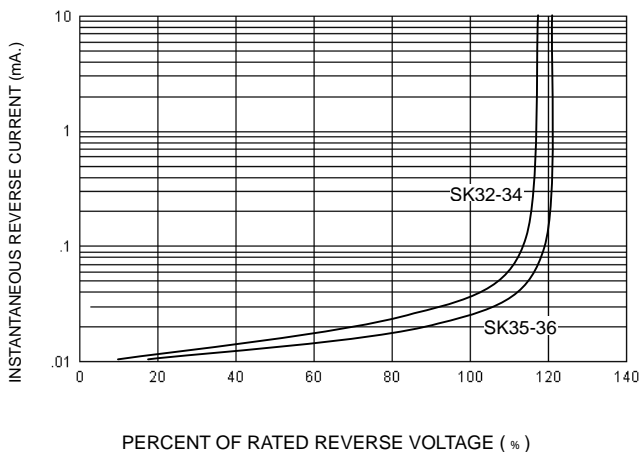


FIG-4 TYPICAL JUNCTION CAPACITANCE

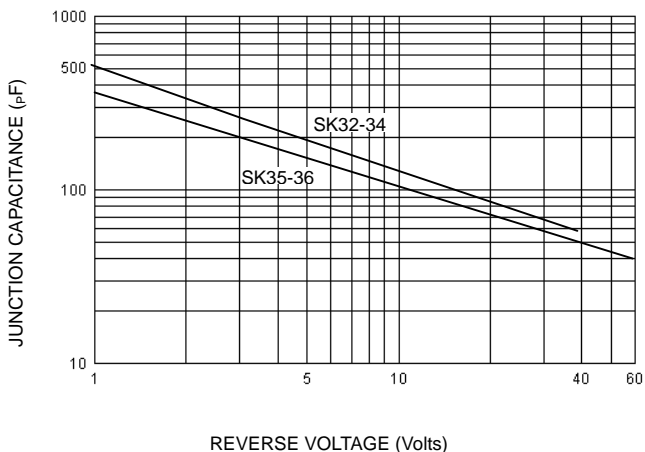
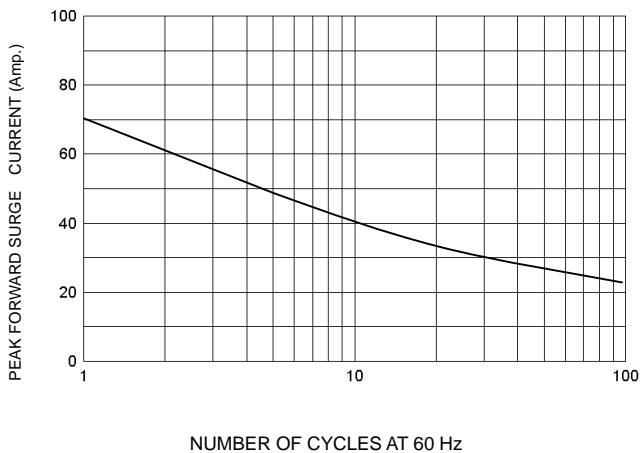


FIG-5 PEAK FORWARD SURGE CURRENT



X-ON Electronics

Largest Supplier of Electrical and Electronic Components

Click to view similar products for [Schottky Diodes & Rectifiers](#) category:

Click to view products by [Mospec](#) manufacturer:

Other Similar products are found below :

[MA4E2039](#) [MMBD301M3T5G](#) [RB160M-50TR](#) [D83C](#) [BAS16E6433HTMA1](#) [BAS 3010S-02LRH E6327](#) [BAT 54-02LRH E6327](#)
[NRVBAF360T3G](#) [NSR05F40QNXT5G](#) [NTE555](#) [JANS1N6640](#) [SS3003CH-TL-E](#) [GA01SHT18](#) [CRS10I30A\(TE85L,QM](#) [MBRA140TRPBF](#)
[MBRB30H30CT-1G](#) [BAT 15-04R E6152](#) [JANTX1N5712-1](#) [DMJ3940-000](#) [SB007-03C-TB-E](#) [NRVBB20100CTT4G](#) [NRVBM120LT1G](#)
[NTSB30U100CT-1G](#) [CRG04\(T5L,TEMQ\)](#) [ACDBA1100LR-HF](#) [ACDBA1200-HF](#) [ACDBA240-HF](#) [ACDBA3100-HF](#) [CDBQC0530L-HF](#)
[ACDBA260LR-HF](#) [ACDBA1100-HF](#) [10BQ015-M3/5BT](#) [NRVBM120ET1G](#) [VSSB410S-M3/5BT](#) [1N5819T-G](#) [PDS1040Q-13](#) [B160BQ-13-F](#)
[SDM05U20CSP-7](#) [BAS 70-07 E6433](#) [B140S1F-7](#) [HSM560Je3/TR13](#) [DDB2265-000](#) [ZHCS506QTA](#) [HSM190Je3/TR13](#) [B330AF-13](#)
[ACDBUC0230-HF](#) [SDM1U100S1F-7](#) [MBR10200CTF-G1](#) [CDLL5712](#) [DMF2822-000](#)