

■ PRODUCT CHARACTERISTICS

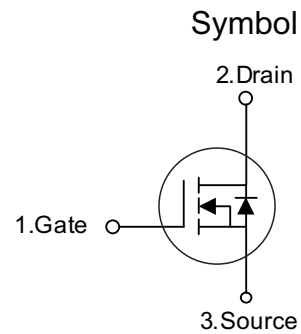
VDSS	700V
$R_{DS(on)typ}(V_{GS}=10V)$	1.38Ω
Qg@type	35nC
ID	7A

■ APPLICATIONS

- High frequency switching mode power supply
- Electronic ballast
- UPS

■ FEATURES

- * Fast Switching
- * With 100% Avalanche Tested



■ ORDER INFORMATION

Order codes		Package	Packing
Halogen-Free	Halogen		
N/A	MOT7N70F	TO-220F	50 pieces/Tube
N/A	MOT7N70A	TO-220	50 pieces/Tube

■ ABSOLUTE MAXIMUM RATINGS ($T_C = 25^\circ\text{C}$, unless otherwise specified)

PARAMETER	SYMBOL	RATINGS	UNIT
Drain-Source Voltage	V_{DSS}	700	V
Gate-Source Voltage	V_{GSS}	±30	V
Drain Current	Continuous	I_D	7
	Pulsed (Note 2)	I_{DM}	14
Avalanche Energy	Single Pulsed (Note 3)	E_{AS}	480
Peak Diode Recovery dv/dt (Note 4)	dv/dt	2.2	V/ns
Power Dissipation	P_D	40	W
Junction Temperature	T_J	+150	°C
Storage Temperature Range	T_{STG}	-55 ~ +150	°C

Notes: 1. Absolute maximum ratings are those values beyond which the device could be permanently damaged.

Absolute maximum ratings are stress ratings only and functional device operation is not implied.

2. Repetitive Rating : Pulse width limited by maximum junction temperature.
3. $L=60\text{mH}$, $I_{AS}=4.0\text{A}$, $V_{DD}=50\text{V}$, $R_G=25\Omega$, Starting $T_J=25^\circ\text{C}$
4. $I_{SD} \leq 7.0\text{A}$, $di/dt \leq 200\text{A}/\mu\text{s}$, $V_{DD} \leq BV_{DSS}$, Starting $T_J=25^\circ\text{C}$

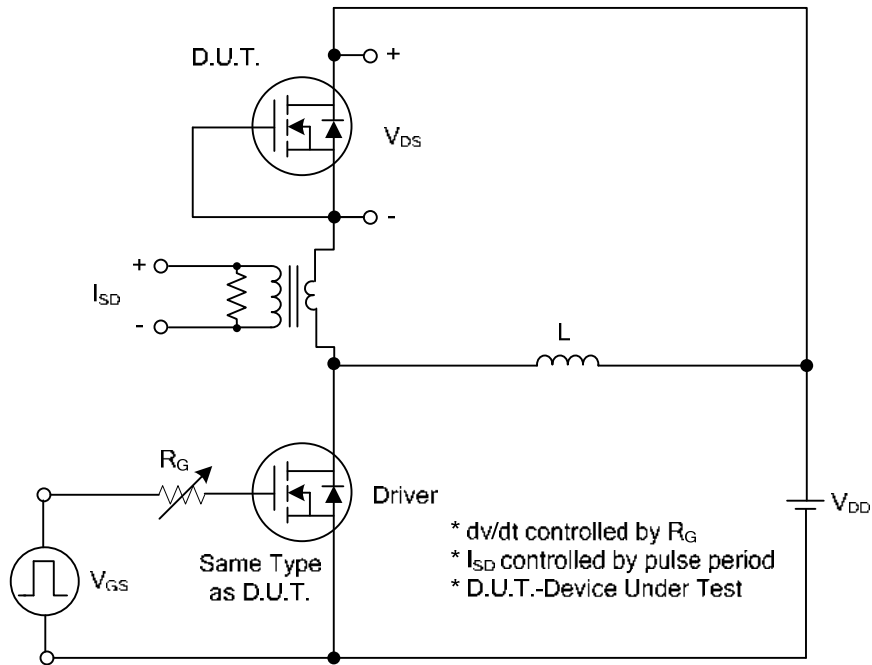
■ ELECTRICAL CHARACTERISTICS ($T_C = 25^\circ\text{C}$, unless otherwise specified)

PARAMETER	SYMBOL	TEST CONDITIONS	MIN	TYP	MAX	UNIT
Off characteristics						
Drain-Source Breakdown Voltage	BV_{DSS}	$V_{GS}=0V, I_D=250\mu A$	700	-	-	V
Drain-Source Leakage Current	I_{DSS}	$V_{DS}=700V, V_{GS}=0V$	-	-	10	μA
Gate-Source Leakage Current	Forward	$V_{DS}=0V, V_{GS}=30V$	-	-	100	nA
	Reverse	$V_{DS}=0V, V_{GS}=-30V$	-	-	-100	nA
On characteristics						
Gate Threshold Voltage	$V_{GS(TH)}$	$V_{DS}=V_{GS}, I_D=250\mu A$	2.0	-	4.0	V
Drain-Source On-State Resistance	$R_{DS(ON)}$	$V_{GS}=10V, I_D=3.5A$	-	1.38	1.5	Ω
Dynamic characteristics						
Input Capacitance	C_{ISS}	$V_{GS}=0V, V_{DS}=25V, f=1.0\text{MHz}$	-	868	-	pF
Output Capacitance	C_{OSS}		-	125	-	pF
Reverse Transfer Capacitance	C_{RSS}		-	30	-	pF
Switching characteristics						
Total Gate Charge (Note 1)	Q_G	$V_{DS}=300V, V_{GS}=10V, I_D=7A, I_G=1\text{mA}$ (Note 1, 2)	-	35	-	nC
Gate to Source Charge	Q_{GS}		-	7.4	-	nC
Gate to Drain Charge	Q_{GD}		-	12.6	-	nC
Turn-ON Delay Time (Note 1)	$t_{D(ON)}$	$V_{DD}=30V, V_{GS}=10V, I_D=0.5A, R_G=25\Omega$ (Note 1, 2)	-	40	-	ns
Rise Time	t_R		-	102	-	ns
Turn-OFF Delay Time	$t_{D(OFF)}$		-	264	-	ns
Fall-Time	t_F		-	172	-	ns
Source-drain diode ratings and characteristics						
Maximum Body-Diode Continuous Current	I_S		-	-	7	A
Maximum Body-Diode Pulsed Current	I_{SM}		-	-	14	A
Drain-Source Diode Forward Voltage (Note 1)	V_{SD}	$I_S=7.0A, V_{GS}=0V$	-	-	1.4	V
Body Diode Reverse Recovery Time (Note 1)	t_{rr}	$I_S=7.0A, V_{GS}=0V,$	-	420	-	ns
Body Diode Reverse Recovery Charge	Q_{rr}	$di_F/dt=100A/\mu s$	-	4	-	μC

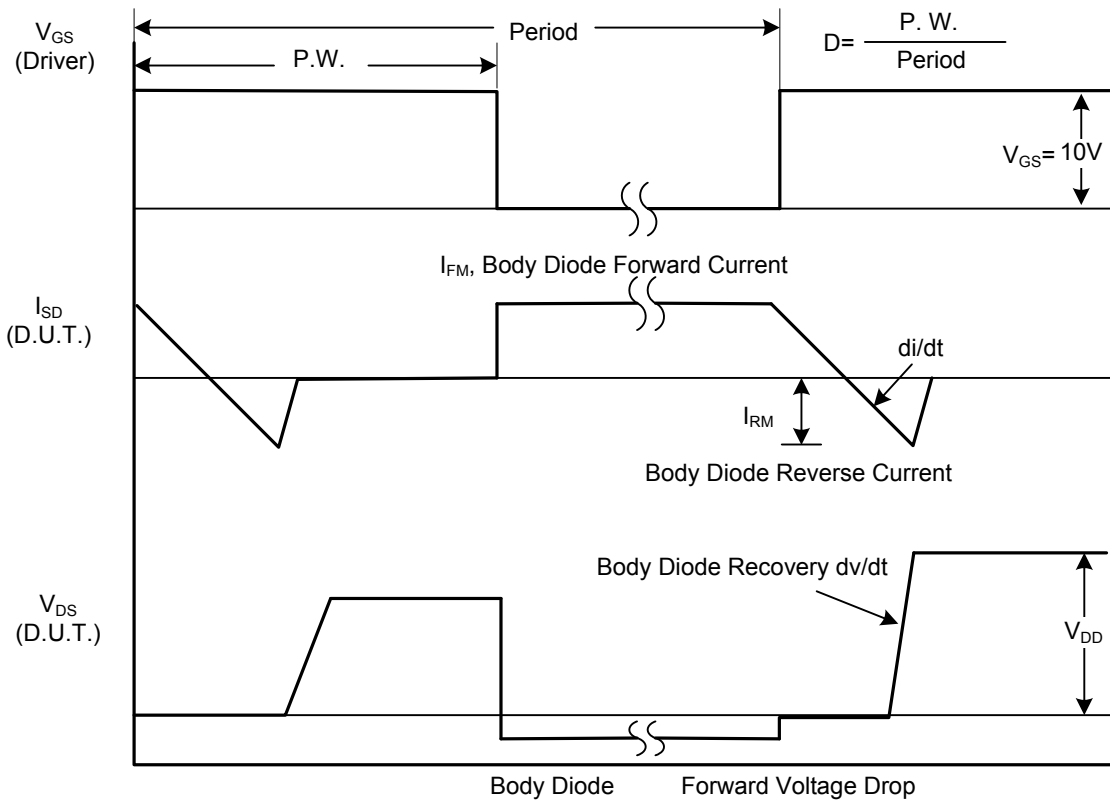
Notes: 1. Pulse Test : Pulse width $\leq 300\mu s$, Duty cycle $\leq 2\%$.

2. Essentially independent of operating temperature.

■ TEST CIRCUITS AND WAVEFORMS

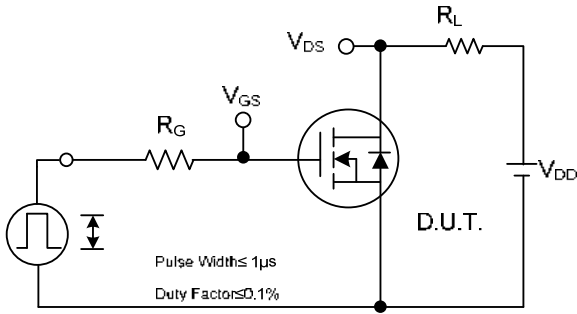


Peak Diode Recovery dv/dt Test Circuit

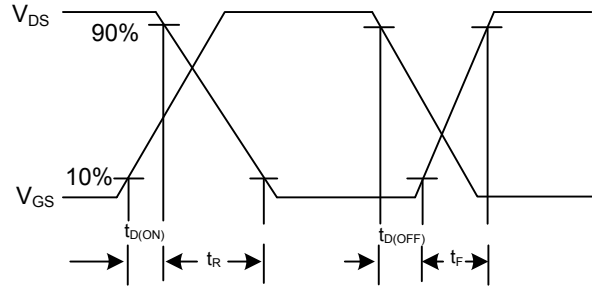


Peak Diode Recovery dv/dt Waveforms

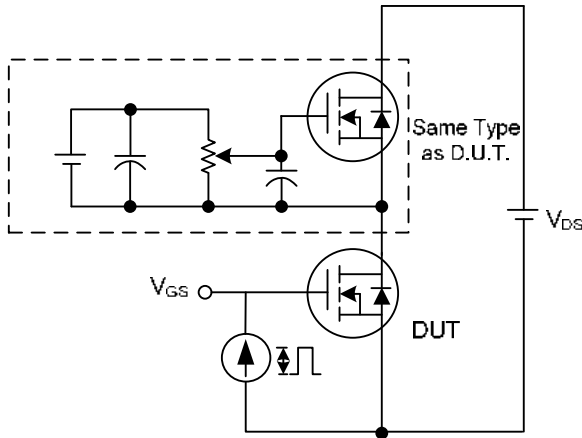
■ TEST CIRCUITS AND WAVEFORMS(Cont.)



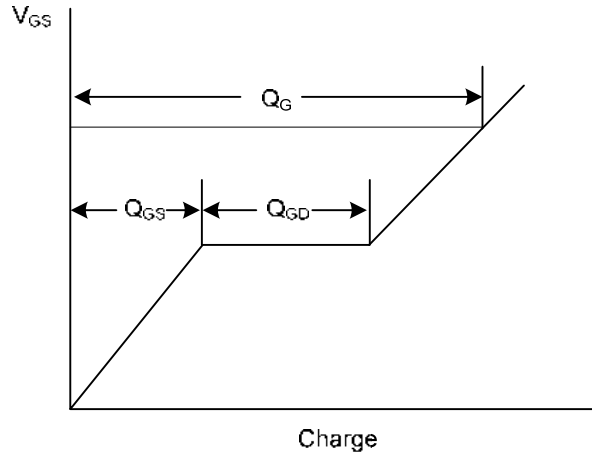
Switching Test Circuit



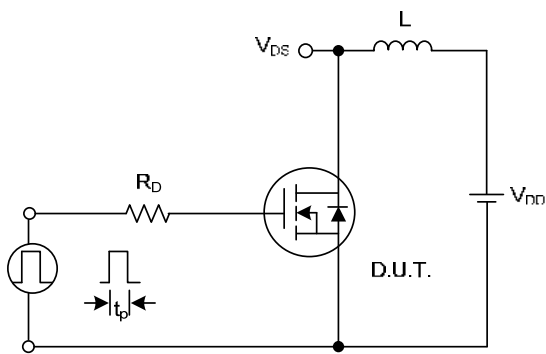
Switching Waveforms



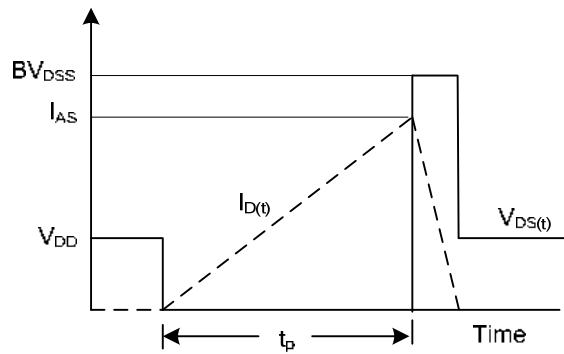
Gate Charge Test Circuit



Gate Charge Waveform

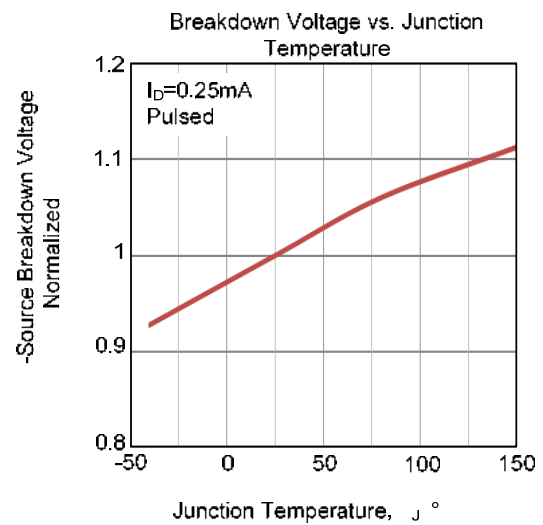
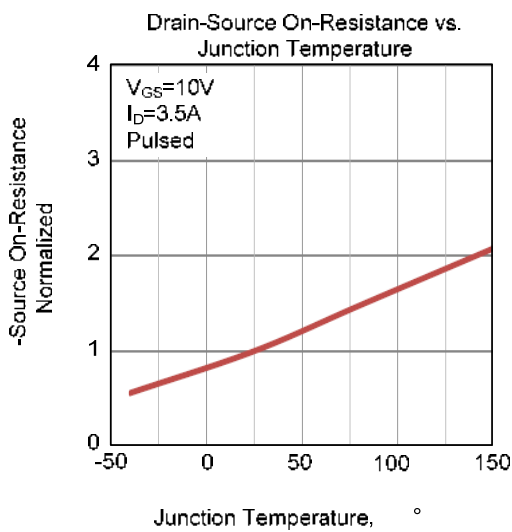
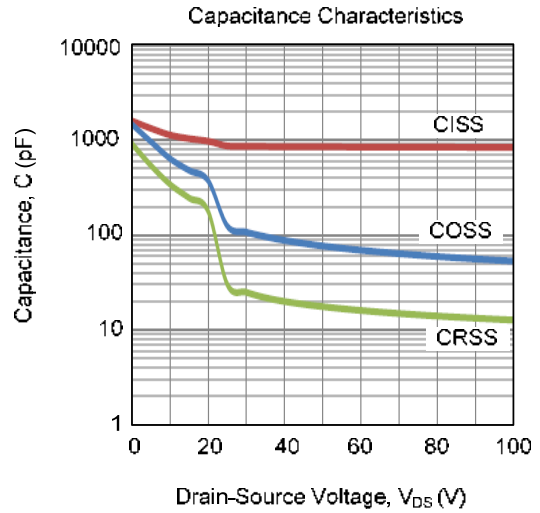
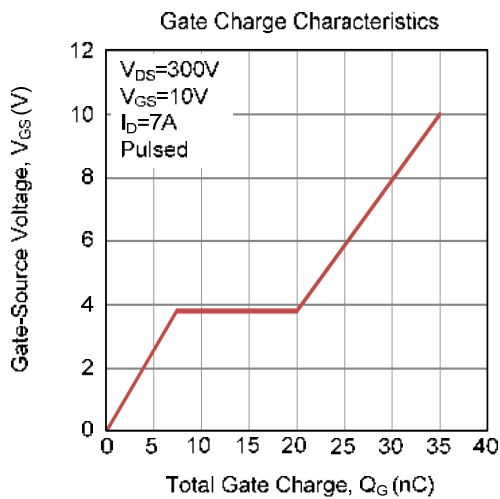
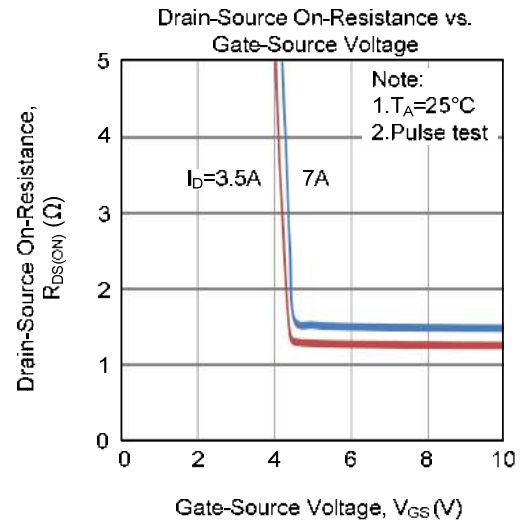
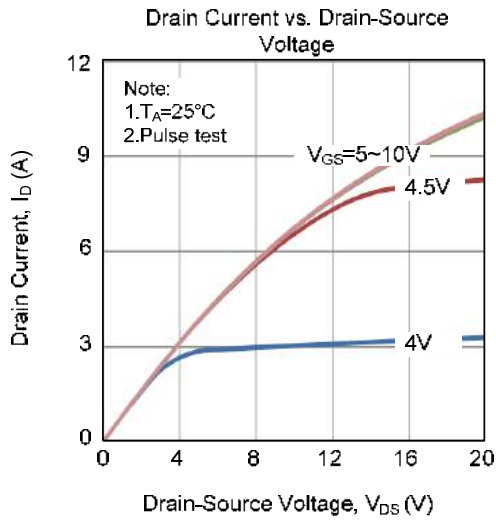


Unclamped Inductive Switching Test Circuit

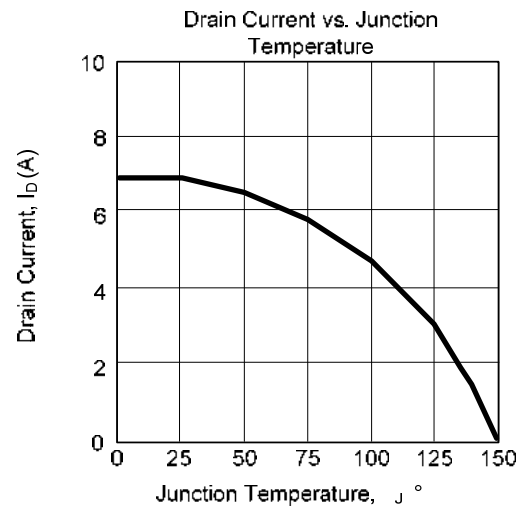
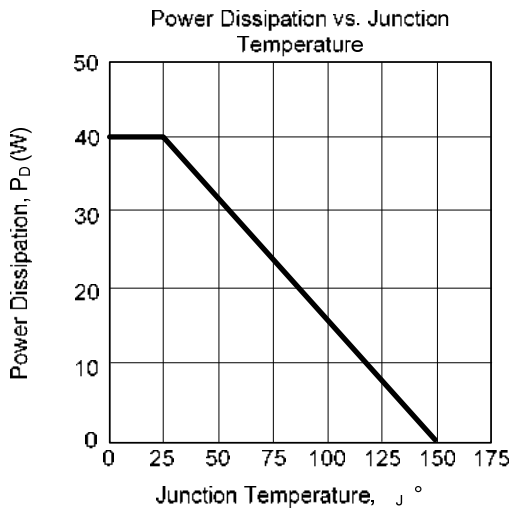
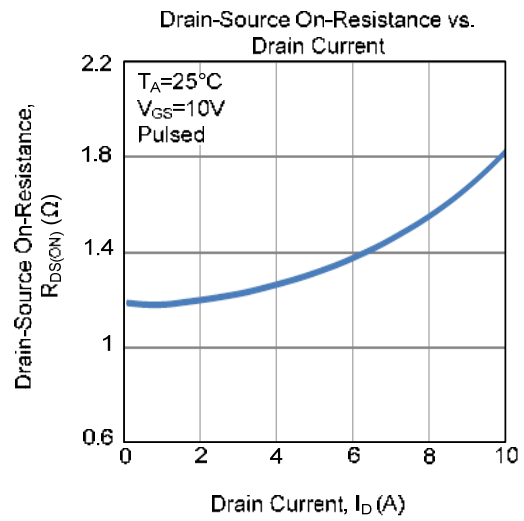
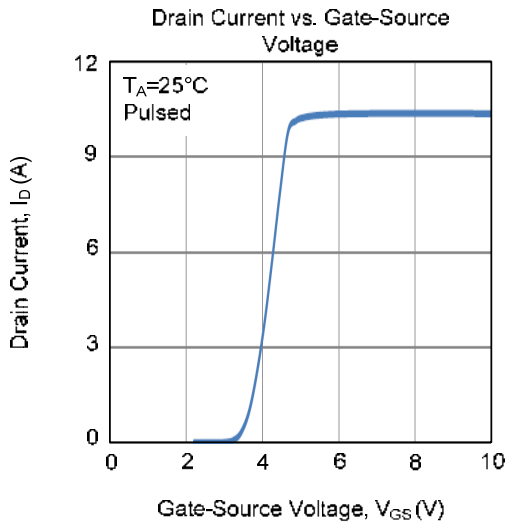
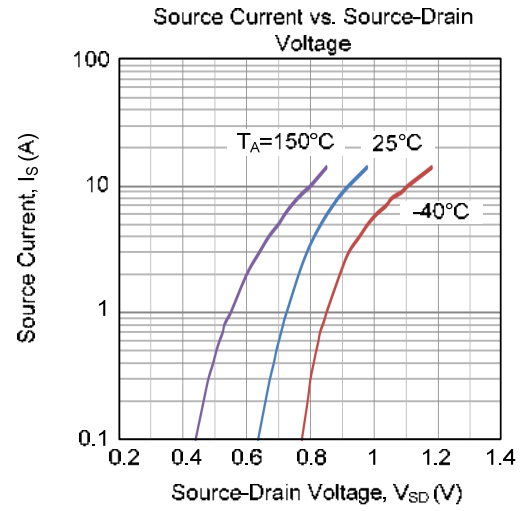
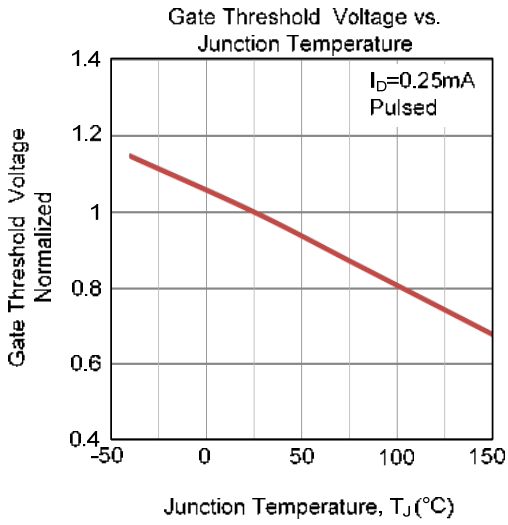


Unclamped Inductive Switching Waveforms

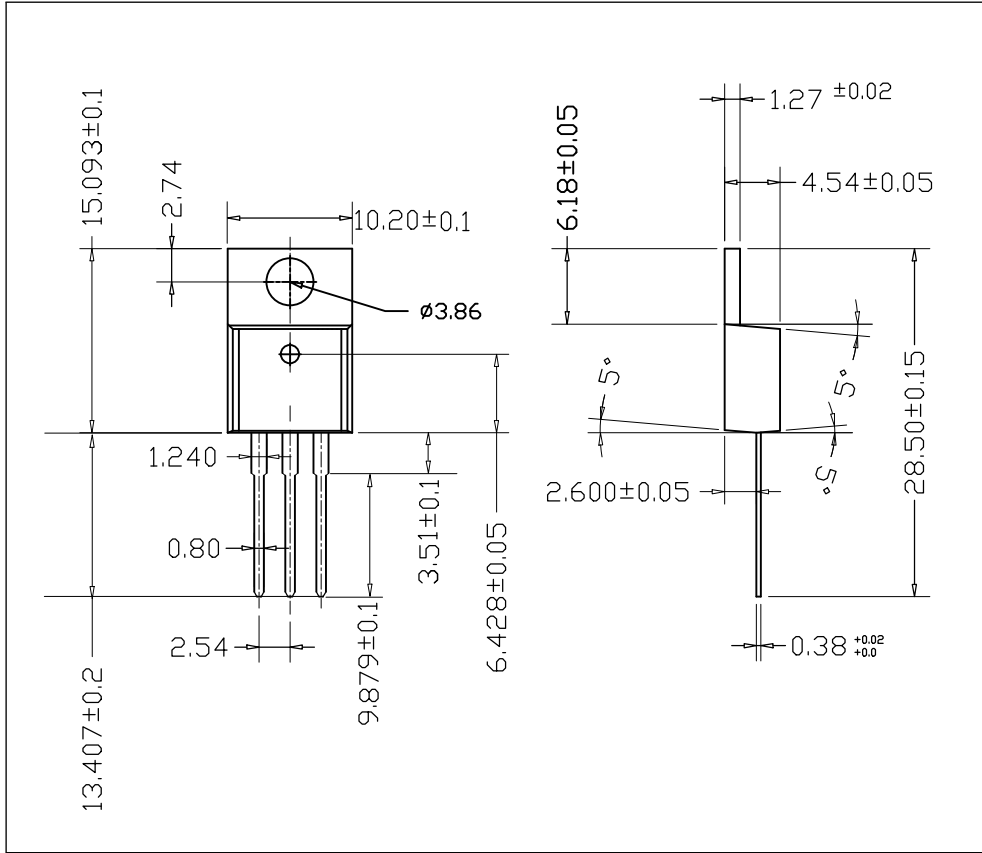
■ TYPICAL CHARACTERISTICS



■ TYPICAL CHARACTERISTICS(Cont.)



■ TO-220-3L PACKAGE OUTLINE DIMENSIONS



X-ON Electronics

Largest Supplier of Electrical and Electronic Components

Click to view similar products for [MOSFET](#) category:

Click to view products by [MOT](#) manufacturer:

Other Similar products are found below :

[IRFD120](#) [JANTX2N5237](#) [BUK455-60A/B](#) [MIC4420CM-TR](#) [VN1206L](#) [NDP4060](#) [SI4482DY](#) [IPS70R2K0CEAKMA1](#) [SQD23N06-31L-GE3](#)
[TK16J60W,S1VQ\(O](#) [2SK2614\(TE16L1,Q\)](#) [DMN1017UCP3-7](#) [DMN1053UCP4-7](#) [SQJ469EP-T1-GE3](#) [NTE2384](#) [DMC2700UDMQ-7](#)
[DMN2080UCB4-7](#) [DMN61D9UWQ-13](#) [US6M2GTR](#) [DMN31D5UDJ-7](#) [DMP22D4UFO-7B](#) [DMN1006UCA6-7](#) [DMN16M9UCA6-7](#)
[STF5N65M6](#) [IRF40H233XTMA1](#) [STU5N65M6](#) [DMN6022SSD-13](#) [DMN13M9UCA6-7](#) [DMTH10H4M6SPS-13](#) [DMN2990UFB-7B](#)
[IPB80P04P405ATMA2](#) [2N7002W-G](#) [MCAC30N06Y-TP](#) [MCQ7328-TP](#) [BXP7N65D](#) [BXP4N65F](#) [AOL1454G](#) [WMJ80N60C4](#) [BXP2N20L](#)
[BXP2N65D](#) [BXT1150N10J](#) [BXT1700P06M](#) [TSM60NB380CP](#) [ROG](#) [RQ7L055BGTCR](#) [DMNH15H110SK3-13](#) [SLF10N65ABV2](#)
[BSO203SP](#) [BSO211P](#) [IPA60R230P6](#) [IPA60R460CE](#)