

Model	Item #	Torque Ranges		Graduation		Square Drive
		American	S.I.	American	S.I.	
EPT250i-D	280033	50 - 250 lbf.in	6.2 - 28.8 N.m	1 lbf.in	0.1 N.m	1/4"
EPT250i-A	280034	50 - 250 lbf.in	6.2 - 28.8 N.m	1 lbf.in	0.1 N.m	3/8"
EPT75F	280035	15 - 75 lbf.ft	23.7 - 105.1 N.m	0.5 lbf.ft	0.5 N.m	3/8"
EPT150F	280036	10 - 150 lbf.ft	20.3 - 210.1 N.m	1 lbf.in	1 N.m	1/2"
EPT250F	280037	30 - 250 lbf.ft	47.4 - 345.7 N.m	2 lbf.ft	2 N.m	1/2"
EPT400F	280038	80 - 400 lbf.ft	142.3 - 559.2 N.m	2.5 lbf.ft	2.5 N.m	3/4"
EPT550F	280039	110 - 550 lbf.ft	183 - 779.5 N.m	2.5 lbf.ft	5 N.m	3/4"
EPT750F	280040	150 - 750 lbf.ft	237.2 - 1050.6 N.m	5 lbf.ft	5 N.m	1"

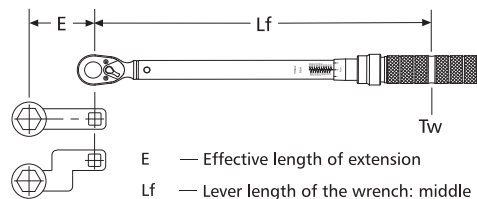
Model	Item #	Graduation	Length (mm)	Width (mm)	Lf (mm)
EPT250i-D	280033	1 lbf.in	245	27.3	195.2
EPT250i-A	280034	1 lbf.in	245	27.3	195.2
EPT75F	280035	0.5 lbf.ft	410	36.4	329.5
EPT150F	280036	1 lbf.ft	520	41	435
EPT250F	280037	2 lbf.ft	610	41	525
EPT400F	280038	2.5 lbf.ft	1012	58	918.8
EPT550F	280039	2.5 lbf.ft	1125	58	1031.8
EPT750F	280040	5 lbf.ft	1225	67	1127.6

Calibration & Maintenance

Torque wrenches go out of calibration with use. A wrench must be properly calibrated and maintained on a preventative maintenance and calibration schedule. In order to maintain accuracy, it is crucial that a wrench be calibrated regularly using a torque tester.

Calculations For Torque Wrench Extensions

When using extensions, the torque applied to the nut is greater than the setting. To ensure that the correct torque is applied when using extensions, keep the extension "in-line" with the axis of the wrench (as shown in diagram). To calculate the increase, use the formula below:

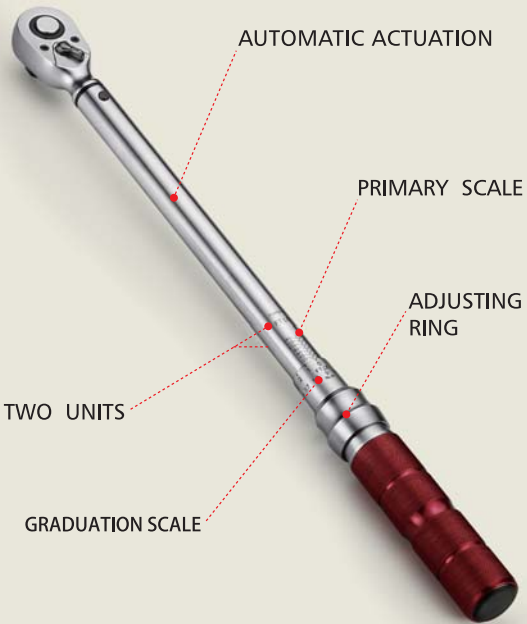


- E — Effective length of extension
 - Lf — Lever length of the wrench: middle of handle to center of square drive
 - Tw — Torque setting on the wrench
 - Ta — Torque applied by the extension to the fastener
- $$Tw \text{ (Torque Setting)} = Ta \times \frac{Lf}{Lf+E}$$

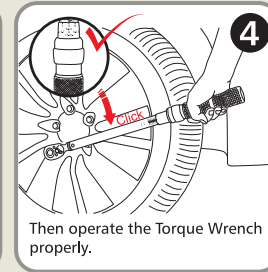
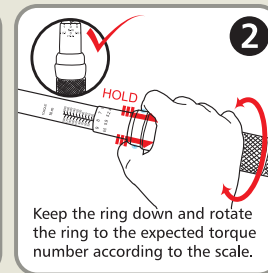
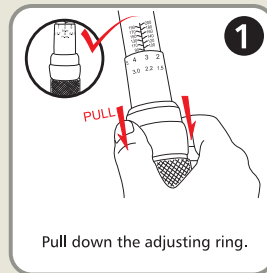
mountz®

FOR INDUSTRIAL ASSEMBLY

EPT TORQUE WRENCH

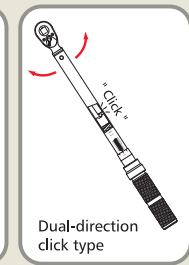
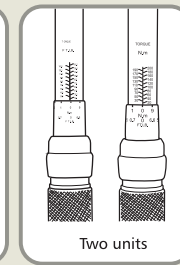
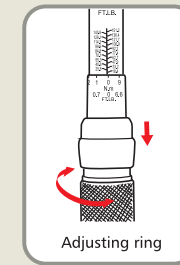


OPERATION MANUAL

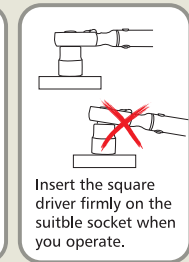
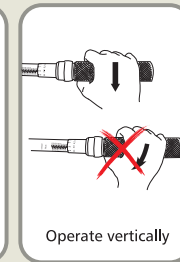
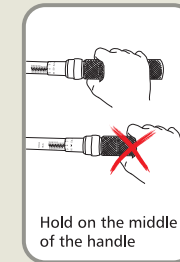


TIPS FOR EPT TORQUE WRENCH

FEATURES



NOTE



X-ON Electronics

Largest Supplier of Electrical and Electronic Components

Click to view similar products for [mountz manufacturer](#):

Other Similar products are found below :

[280041](#) [145866](#) [280034](#) [EPT250I-A](#) [068106](#) [280035](#)