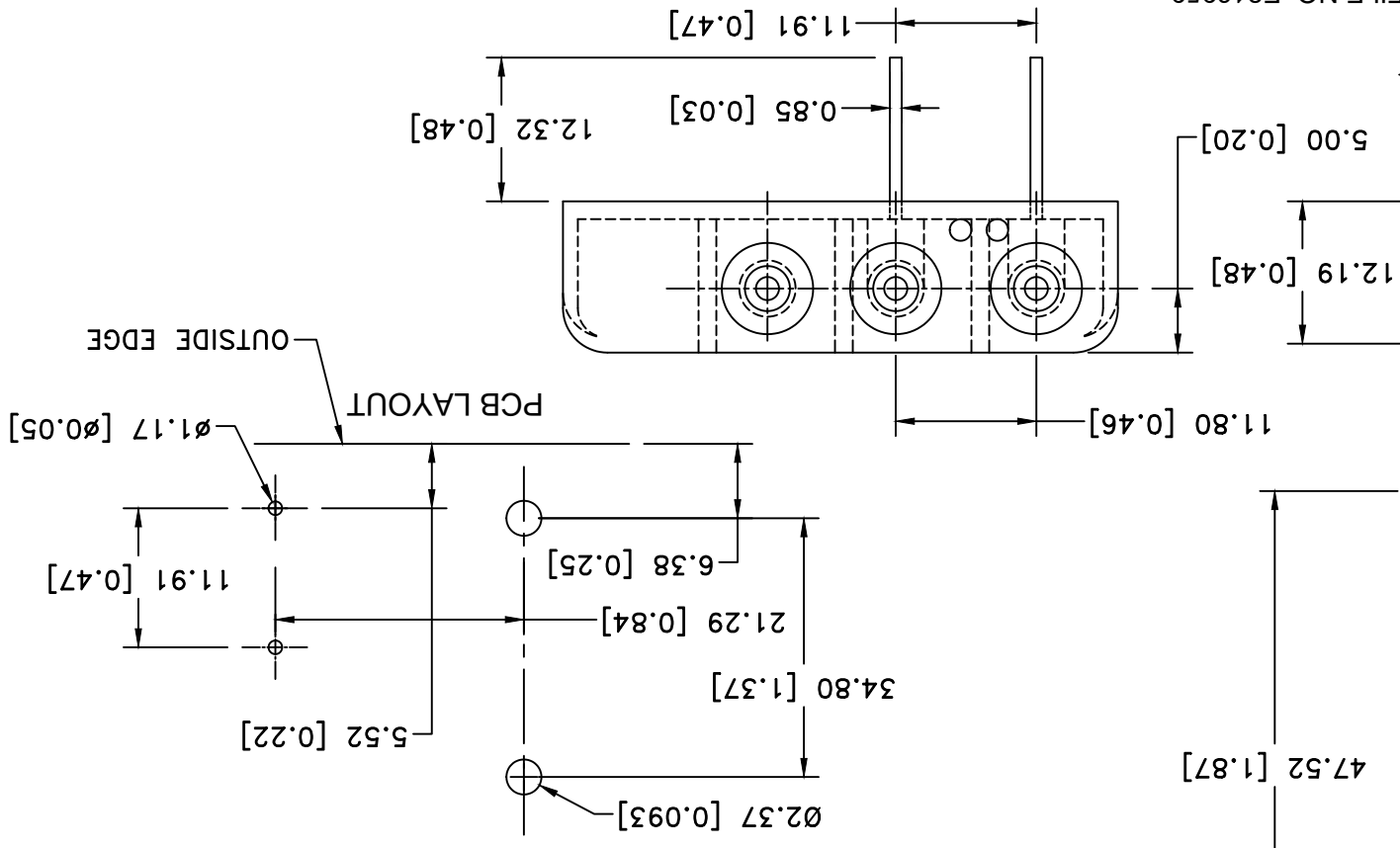
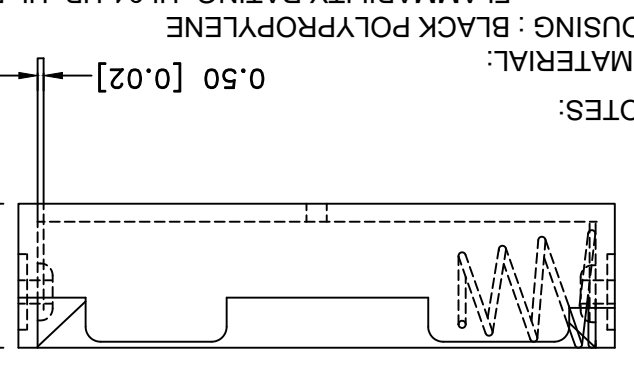
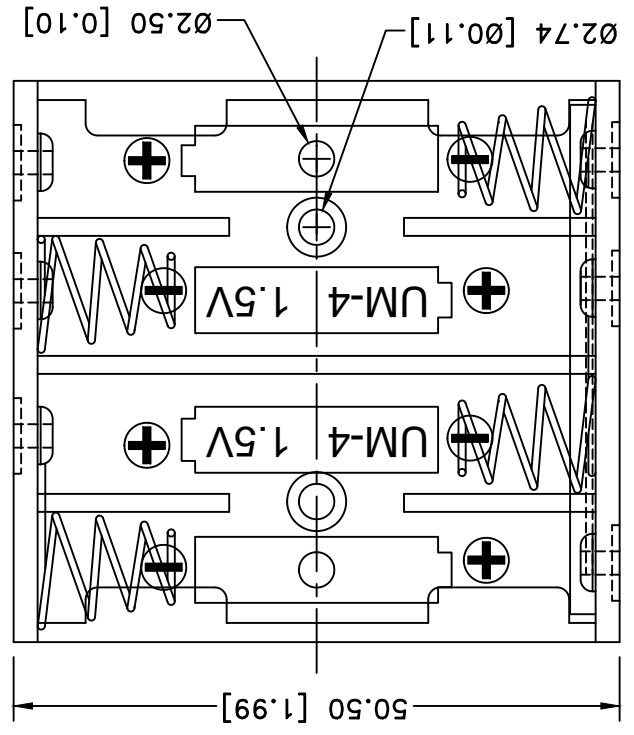


| Date | SYM | REVISION RECORD | AUTH | DR. CK. |
|----------|-----|--|------|---------|
| 06/14/13 | B | UPDATED TITLE | T.B. | B.S. |
| 07/07/17 | C | ADDED DIM. $\varnothing 2.74$ | T.B. | B.S. |
| 07/22/17 | D | DIM. 0.050 WAS 0.051, DIM. 0.85 WAS 1.02 | T.B. | B.S. |
| 03/07/19 | E | UPDATED TO "ROHS COMPLIANT" | T.B. | B.S. |



| | | | | |
|--------------------------------|---|--|---------------|------------------|
| Tolerance (Except as noted) | MPD Memory Protection Devices, Inc 200 Broad Hollow Road, Farmingdale, New York 11735 | Scale | Drawn By B.S. | Approved By T.B. |
| | | Title FOUR "AAA" CELL HOLDER WITH PC PINS | | |
| Fractional $\pm .8 (.030)$ | | | | |
| Angular $\pm 3^\circ$ | Date 03/07/19 | Drawing Number BC4AAAPC | | |



NOTES:
 1. MATERIAL:
 HOUSING : BLACK POLYPROPYLENE
 FLAMMABILITY RATING- UL94-HB, UL FILE NO. E216959
 RIVETS: BRASS, NICKEL PLATED.
 SPRING: SPRING STEEL, NICKEL PLATED.
 PC PINS: SPRING STEEL, NICKEL PLATED.
 TEMPERATURE RANGE: -10°C TO +110°C
 CONTACT RESISTANCE: UNDER 50mΩ FOR +/- CONTACTS PER
 EIA-540J000
 ROHS COMPLIANT

MOUNTING INSTRUCTION:
 USE 2-56 MACHINE SCREWS OR EYELETS 0.089" OD
 BY 0.15" FLANGE STIMPSON GS-3 SERIES OR EQUIVALENT.
 ALSO ADHESIVES AND DOUBLE SIDED TAPES WORK WELL.

X-ON Electronics

Largest Supplier of Electrical and Electronic Components

Click to view similar products for [mpd](#) manufacturer:

Other Similar products are found below :

[AS212-L](#) [BH24AAAL](#) [BC4AAAPC](#) [ZA5075](#) [BC4AAAL](#) [AP-130](#) [BK-5021](#) [ZA5070](#) [BC3AAPC](#) [BH9VL](#) [APP-004](#) [AP-133](#) [BH2/3AC](#)
[413717H](#) [BC22AAL](#) [SBH421AS](#) [BH48DW](#) [AP-124](#) [APP-001](#) [BC-2013](#) [BC3AAAPC](#) [AP-129](#) [ZA5074-B](#) [BS4T-HD](#) [ZA5350](#) [ZA5076](#)
[ABG-43](#) [SBH441AS](#) [ZA1060](#) [AP-131](#) [BH-20H-1T](#) [BE-2AAAA-PC](#) [AS212](#) [BH26AAL](#) [BC2AAAL](#) [BHX1-1225-PC](#) [BH2/3A-SM](#) [BS6T](#)
[BA2032](#) [BH26DL](#) [BH1/2AA-3](#) [ZA5036](#) [BH2DL](#) [BC12AAL](#) [BH24AAAW](#) [BK-5091](#) [BH24AASF](#) [BC3AAL](#) [BH9VW](#) [BK-5003](#)