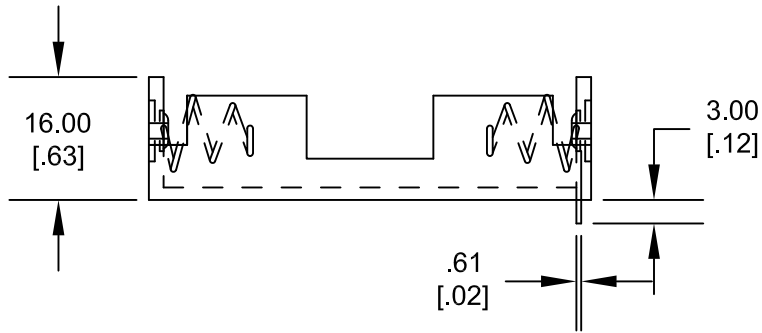
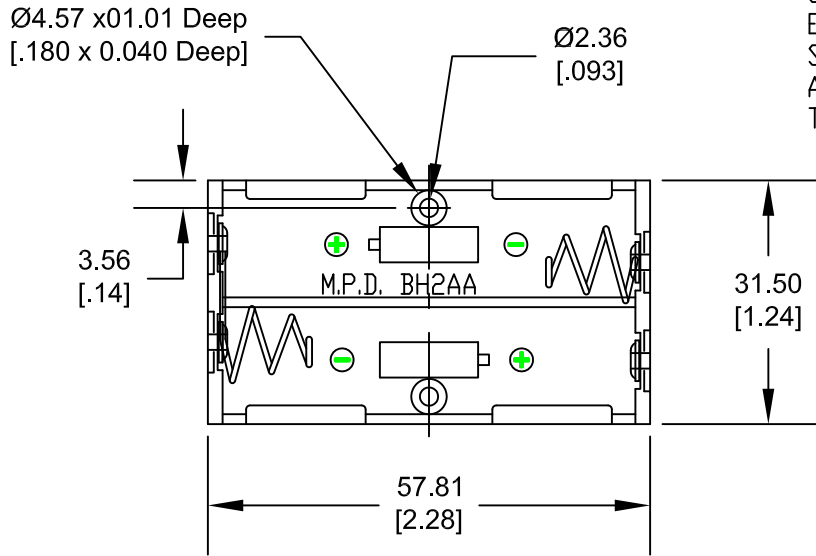
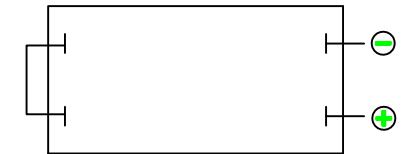
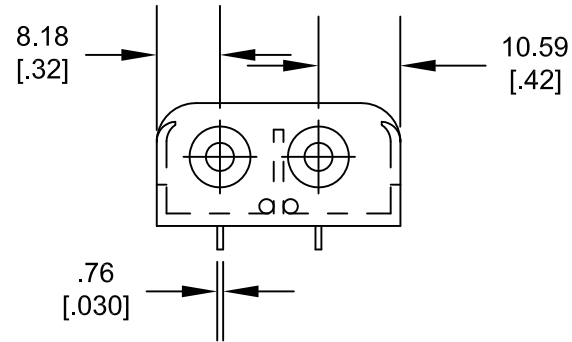
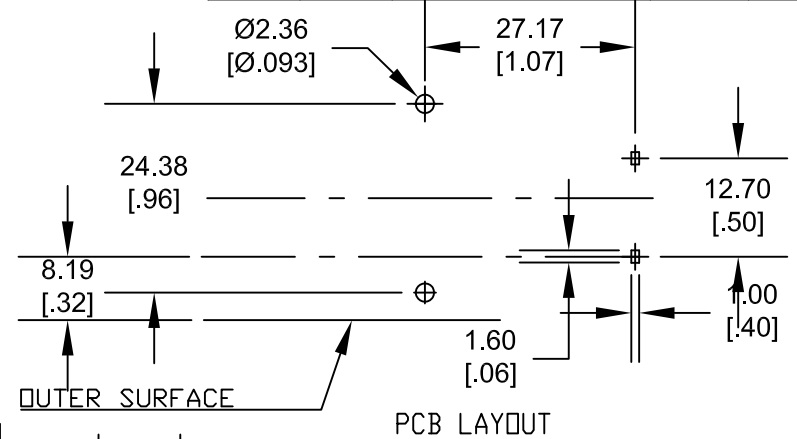


Mounting Instruction:

USE 2-56 MACHINE SCREWS OR
EYELETS 0.089" OD BY 0.15" FLANGE
STIMPSON GS-3 SERIES OR EQUIVALENT
ALSO ADHESIVES AND DOUBLE SIDED
TAPES WORK WELL.



Date	SYM	REVISION RECORD	AUTH	DR.	CK.
1/14/06	B	Added 'ROHS COMPLIANT'	T.B.	B.S.	
10/28/06	C	Added Ø2.36 hole size to PCB layout	T.B.	B.S.	
12/02/11	D	Dim. 57.81 was 57.15 Dim. 3.00 was 12.70 Dim. 16.00 was 15.87	T.B.	B.S.	
10/17/14	E	Updated to ROHS 2 Compliant	T.B.	B.S.	




INTER CONNECTION SCHEMATIC

NOTES:

MATERIAL:

HOUSING: IMPACT RESISTANCE NYLON #6, BLACK, UL 94V-0,
MATERIAL FILE #UL E48285
SPRING: SPRING STEEL, NICKLE PLATED
CONTACTS: SPRING STEEL, NICKLE PLATED
EYELETS: BRASS, NICKLE PLTD.
ROHS 2 COMPLIANT

Tolerance (Inches)	 Memory Protection Devices, Inc 200 Broad Hollow Road, Farmingdale, New York 11735		
Decimal ±.5 (.020)	Scale	Drawn By B.S. Approved By T.B.	
Fractional ± .8 (.030)	Title 2AA BATTERY HOLDER WITH PC PINS		
Angular ± 3°	Date 10/17/14	Drawing Number BH2AA-PC	

X-ON Electronics

Largest Supplier of Electrical and Electronic Components

Click to view similar products for [mpd](#) manufacturer:

Other Similar products are found below :

[AS212-L](#) [BH24AAAL](#) [BC4AAAPC](#) [ZA5075](#) [BC4AAAL](#) [AP-130](#) [BK-5021](#) [ZA5070](#) [BC3AAPC](#) [BH9VL](#) [APP-004](#) [AP-133](#) [BH2/3AC](#)
[413717H](#) [BC22AAL](#) [SBH421AS](#) [BH48DW](#) [AP-124](#) [APP-001](#) [BC-2013](#) [BC3AAAPC](#) [AP-129](#) [ZA5074-B](#) [BS4T-HD](#) [ZA5350](#) [ZA5076](#)
[ABG-43](#) [SBH441AS](#) [ZA1060](#) [AP-131](#) [BH-20H-1T](#) [BE-2AAAA-PC](#) [AS212](#) [BH26AAL](#) [BC2AAAL](#) [BHX1-1225-PC](#) [BH2/3A-SM](#) [BS6T](#)
[BA2032](#) [BH26DL](#) [BH1/2AA-3](#) [ZA5036](#) [BH2DL](#) [BC12AAL](#) [BH24AAAW](#) [BK-5091](#) [BH24AASF](#) [BC3AAL](#) [BH9VW](#) [BK-5003](#)