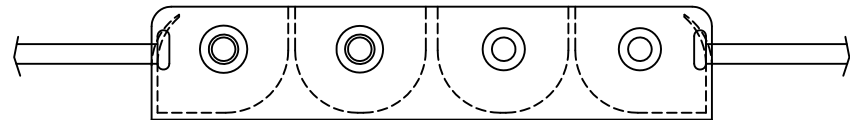
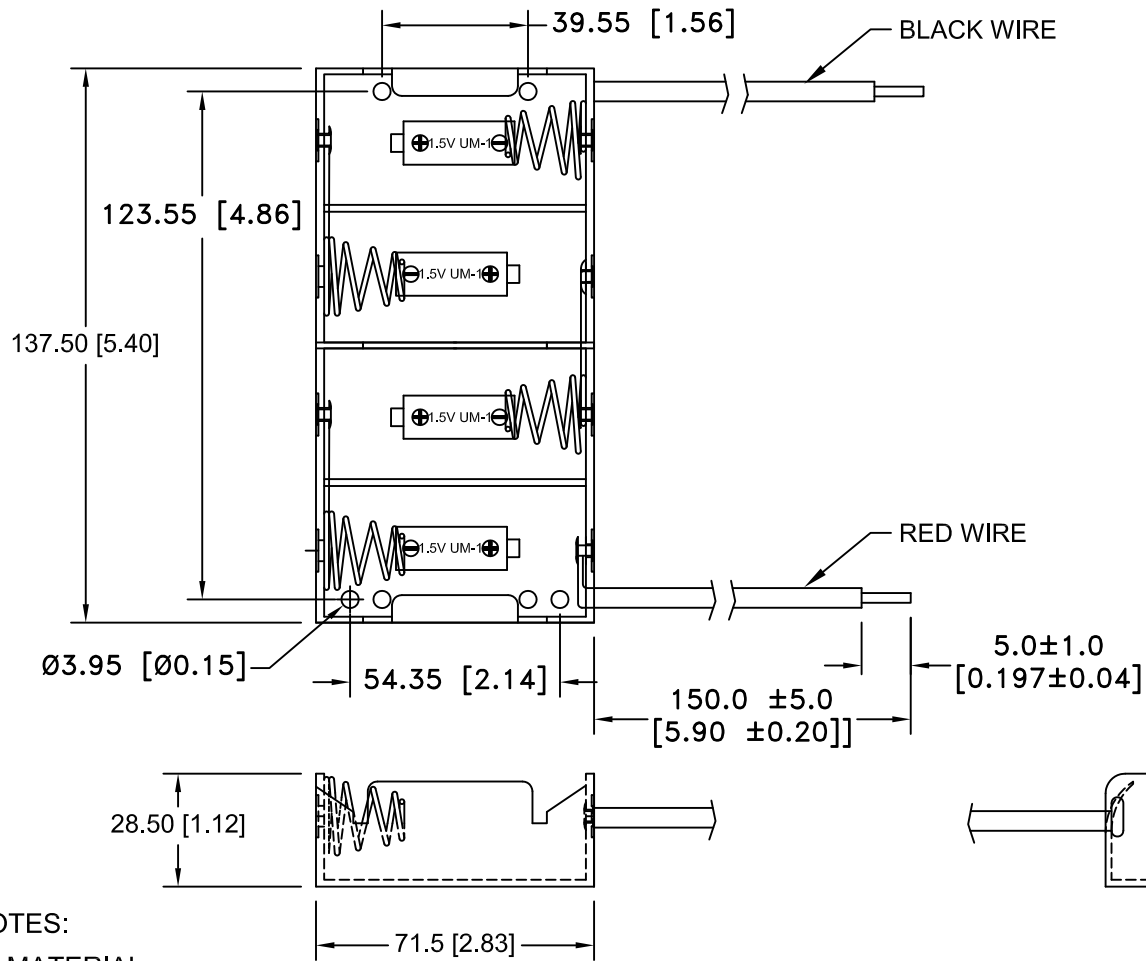


| Date     | SYM | REVISION RECORD                           | AUTH | DR.  | CK. |
|----------|-----|---|------|------|-----|
| 12/05/08 | A   | ADDED ROHS COMPLIANT                      | T.B. | B.S. |     |
| 08/01/14 | B   | UPDATED TO ROHS 2 COMPLIANT               | T.B. | B.S. |     |
| 03/03/17 | C   | DIM. 150.0 WAS 152.4<br>DIM. 5.0 WAS 3.18 | T.B. | B.S. |     |
| 04/07/17 | D   | ADDED MOUNTING HOLES                      | T.B. | B.S. |     |
| 04/29/17 | E   | ADDED WIRES TO SIDE VIEW                  | T.B. | B.S. |     |



**NOTES:**


**1. MATERIAL:**

HOUSING : BLACK POLYPROPYLENE  
 FLAMMABILITY RATING -UL94-HB, UL FILE NO. E216959  
 TEMPERATURE RANGE: -10°C to +100°C  
 WIRES: 26 AWG, UL1007, CSA-TR-64, 300V, 80°C  
 RIVETS: BRASS, NICKEL PLATED.  
 SPRING: SPRING STEEL, NICKEL PLATED.  
 CONTACT RESISTANCE: UNDER 50mΩ FOR +/- CONTACTS PER EIA-540J000

**MOUNTING INSTRUCTION:**

USE 6-32 MACHINE SCREWS.  
 ALSO ADHESIVES AND DOUBLE SIDED TAPES WORK WELL.

ROHS 2 COMPLIANT.

|                                |   |                  |               |
|--------------------------------|---|------------------|---------------|
| Tolerance<br>(Except as noted) |  <b>Memory Protection Devices, Inc</b><br>200 Broad Hollow Road, Farmingdale, New York 11735 |                  |               |
| decimal<br>±.5 (.020)          |   | Scale            | Drawn By B.S. |
| Fractional<br>± .8 (.030)      | Title   | Approved By T.B. |               |
| Angular<br>± 3°                | Date  | Drawing Number   |               |
|                                | 04/29/17  | BH4DW            |               |

## **X-ON Electronics**

Largest Supplier of Electrical and Electronic Components

*Click to view similar products for [mpd](#) manufacturer:*

Other Similar products are found below :

[AS212-L](#) [BH24AAAL](#) [BC4AAAPC](#) [ZA5075](#) [BC4AAAL](#) [AP-130](#) [BK-5021](#) [ZA5070](#) [BC3AAPC](#) [BH9VL](#) [APP-004](#) [AP-133](#) [BH2/3AC](#)  
[413717H](#) [BC22AAL](#) [SBH421AS](#) [BH48DW](#) [AP-124](#) [APP-001](#) [BC-2013](#) [BC3AAAPC](#) [AP-129](#) [ZA5074-B](#) [BS4T-HD](#) [ZA5350](#) [ZA5076](#)  
[ABG-43](#) [SBH441AS](#) [ZA1060](#) [AP-131](#) [BH-20H-1T](#) [BE-2AAAA-PC](#) [AS212](#) [BH26AAL](#) [BC2AAAL](#) [BHX1-1225-PC](#) [BH2/3A-SM](#) [BS6T](#)  
[BA2032](#) [BH26DL](#) [BH1/2AA-3](#) [ZA5036](#) [BH2DL](#) [BC12AAL](#) [BH24AAAW](#) [BK-5091](#) [BH24AASF](#) [BC3AAL](#) [BH9VW](#) [BK-5003](#)