

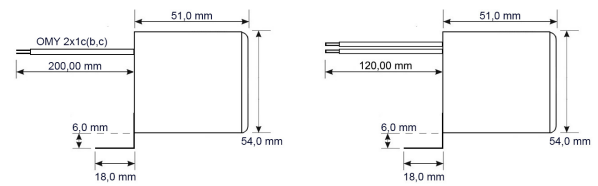
INDUSTRIAL BUZZERS "SPD"

Buzzers produced by our company are used in many branches of industry.

High quality and a wide voltage range enables unlimited use wherever sound signal is necessary.

TECHNICAL SKETCH

Housing



SPD-1

SPD-2

TECHNICAL SKETCH

Housing

	SPD-1A	SPD-1C	SPD-1P	SPD-2A	SPD-2C	SPD-2P
Operating voltage [V]	90-250 V AC	90-250 V AC	90-250 V AC	9-60 V DC	9-60 V DC	9-60 V DC
Operating current [mA]	1	1	1	1	1	1
Signal type	alarm	continous	pulsing	alarm	continous	pulsing
Sound level [dB]	110	110	110	110	110	110
Cable length [mm]	200	200	200	120	120	120
Housing color	black-red	black-white	black	black-red	black-white	black
Housing material	ABS	ABS	ABS	ABS	ABS	ABS
Weight [g]	160	160	160	160	160	160

Other properties

waterproof, filled with epoxy resin



High sound level and small dimensions at the same time.




Protected against **moisture, dirt and vibration** by appropriate use of epoxy resin.



INDUSTRIAL BUZZER SPD-1A

TECHNICAL SPECIFICATIONS

Model SPD-1A

Operating voltage [V AC]	90-250
Operating current [mA]	1
Signal type	alarm
Sound level [dB]	110
Cable length [mm]	200
Housing color	 black-red
Housing material	ABS
Weight [g]	160
Other properties	waterproof*

PRODUCT PHOTO

Model SPD-1A




* filled with epoxy resin

INDUSTRIAL BUZZER SPD-1C

TECHNICAL SPECIFICATIONS

Model SPD-1C

Operating voltage [V AC]	90-250
Operating current [mA]	1
Signal type	continous
Sound level [dB]	110
Cable length [mm]	200
Housing color	 black-white
Housing material	ABS
Weight [g]	160
Other properties	waterproof*

PRODUCT PHOTO

Model SPD-1C



* filled with epoxy resin

INDUSTRIAL BUZZER SPD-1P

TECHNICAL SPECIFICATIONS

Model SPD-1P

Operating voltage [V AC]	90-250
Operating current [mA]	1
Signal type	pulsing
Sound level [dB]	110
Cable length [mm]	200
Housing color	■ black
Housing material	ABS
Weight [g]	160
Other properties	waterproof*

PRODUCT PHOTO

Model SPD-1P



* filled with epoxy resin

INDUSTRIAL BUZZER SPD-2A

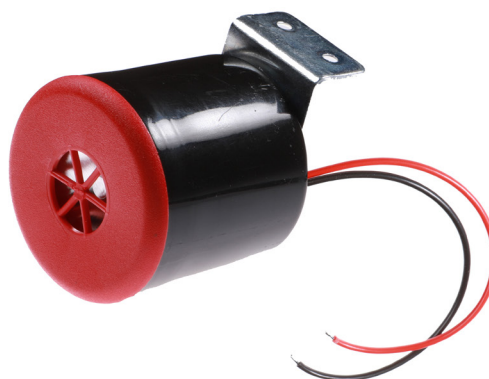
TECHNICAL SPECIFICATIONS

Model SPD-2A

Operating voltage [V DC]	9-60
Operating current [mA]	1
Signal type	alarm
Sound level [dB]	110
Cable length [mm]	120
Housing color	■ black-red
Housing material	ABS
Weight [g]	160
Other properties	waterproof*

PRODUCT PHOTO

Model SPD-2A



* filled with epoxy resin

INDUSTRIAL BUZZER SPD-2C

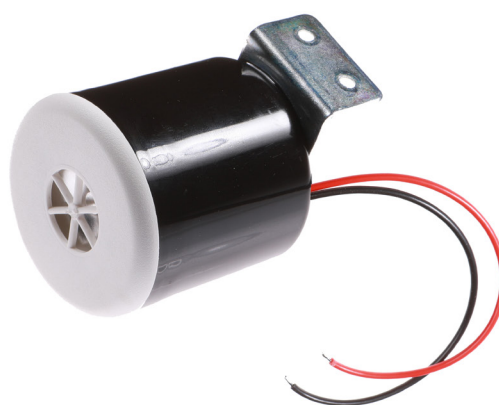
TECHNICAL SPECIFICATIONS

Model SPD-2C

Operating voltage [V DC]	9-60
Operating current [mA]	1
Signal type	continuous
Sound level [dB]	110
Cable length [mm]	120
Housing color	■ black-white
Housing material	ABS
Weight [g]	160
Other properties	waterproof*

PRODUCT PHOTO

Model SPD-2C



* filled with epoxy resin

INDUSTRIAL BUZZER SPD-2P

TECHNICAL SPECIFICATIONS

Model SPD-2P

Operating voltage [V DC]	9-60
Operating current [mA]	1
Signal type	pulsing
Sound level [dB]	110
Cable length [mm]	120
Housing color	■ black
Housing material	ABS
Weight [g]	160
Other properties	waterproof*

PRODUCT PHOTO

Model SPD-2P



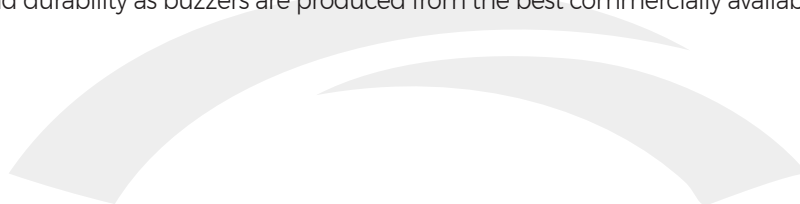
* filled with epoxy resin



ADDITIONAL INFORMATION

Industrial buzzers "BUZ"

- ▶ Simple and **easy to install**.
- ▶ **Small size** and flexible cables allow installation even in difficult to reach places.
- ▶ Type of sound emitted by sirens is clearly associated with an alarm (warning) and cannot be ignored by a person directly in the danger zone.
- ▶ **Highest quality** and durability as buzzers are produced from the best commercially available components.



CONTACT US

MPM | ul. Bajana 14
27-200 Starachowice, Poland
biuro@mpm.net.pl
www.mpm.net.pl



X-ON Electronics

Largest Supplier of Electrical and Electronic Components

Click to view similar products for [MPM manufacturer](#):

Other Similar products are found below :

[BCP-A48](#) [BCPW-D](#) [SPD-2A](#) [PCA-4B](#) [SPD-2C](#) [SPD-2P](#) [BCP-A24](#) [BCPW-C](#) [BCPW-P](#) [PCA-3B](#)