

N-Channel 75-V (D-S) MOSFET

GENERAL DESCRIPTION

The ME50N75T is the N-Channel logic enhancement mode power field effect transistors are produced using high cell density, DMOS trench technology. This high density process is especially tailored to minimize on-state resistance.

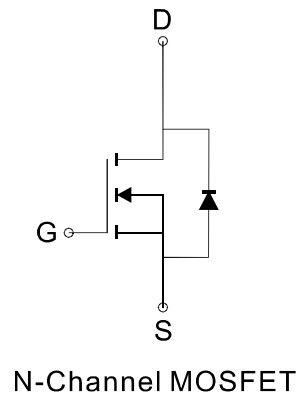
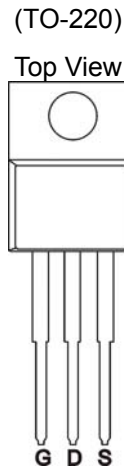
FEATURES

- $R_{DS(ON)} \leq 26m\Omega @ V_{GS}=10V$
- Super high density cell design for extremely low $R_{DS(ON)}$
- Exceptional on-resistance and maximum DC current capability

APPLICATIONS

- Power Management
- DC/DC Converter
- Load Switch

PIN CONFIGURATION



Ordering Information: ME50N75T (Pb-free)

ME50N75T-G (Green product-Halogen free)

Absolute Maximum Ratings (Tc=25°C Unless Otherwise Noted)

Parameter	Symbol	Limit	Unit
Drain-Source Voltage	V_{DSS}	75	V
Gate-Source Voltage	V_{GSS}	± 25	V
Continuous Drain Current	I_D	Tc=25°C	50
		Tc=70°C	42
Pulsed Drain Current	I_{DM}	200	A
Maximum Power Dissipation	P_D	Tc=25°C	150
		Tc=70°C	105
Operating Junction and Storage Temperature Range	T_J, T_{stg}	-55 to 175	°C
Thermal Resistance-Junction to Case*	$R_{\theta JC}$	1	°C/W

* The device mounted on 1in² FR4 board with 2 oz copper.

正式發行

N-Channel 75-V (D-S) MOSFET

Electrical Characteristics (TA=25°C Unless Otherwise Specified)

Symbol	Parameter	Limit	Min	Typ	Max	Unit
STATIC						
BV _{DSS}	Drain-Source Breakdown Voltage	V _{GS} =0V, I _D =250 μA	75			V
V _{GS(th)}	Gate Threshold Voltage	V _{DS} =V _{GS} , I _D =250 μA	2.0		4.0	V
I _{GSS}	Gate-Body Leakage	V _{DS} =0V, V _{GS} =±20V			±100	nA
I _{DSS}	Zero Gate Voltage Drain Current	V _{DS} =75V, V _{GS} =0V			1	μA
R _{DS(ON)}	Drain-Source On-Resistance*	V _{GS} =10V, I _D =30A		22	26	mΩ
V _{SD}	Diode Forward Voltage *	I _S =30A, V _{GS} =0V		0.9	1.2	V
DYNAMIC						
Q _g	Total Gate Charge	V _{DS} =48V, V _{GS} =10V, I _D =50A		38		nC
Q _g	Total Gate Charge	V _{DS} =48V, V _{GS} =4.5V, I _D =50A		11		
Q _{gs}	Gate-Source Charge			13		
Q _{gd}	Gate-Drain Charge			9		
R _g	Gate Resistance	V _{DS} =0V, V _{GS} =0V, f=1MHz		2		Ω
C _{iss}	Input Capacitance	V _{DS} =15V, V _{GS} =0V, f=1MHz		2270		pF
C _{oss}	Output Capacitance			189		
C _{rss}	Reverse Transfer Capacitance			59		
t _{d(on)}	Turn-On Delay Time	V _{DD} =30V, R _L =30Ω, V _{GS} =10V, R _G =3.6Ω		28		ns
t _r	Turn-On Rise Time			5		
t _{d(off)}	Turn-Off Delay Time			51		
T _f	Turn-Off Fall Time			6		

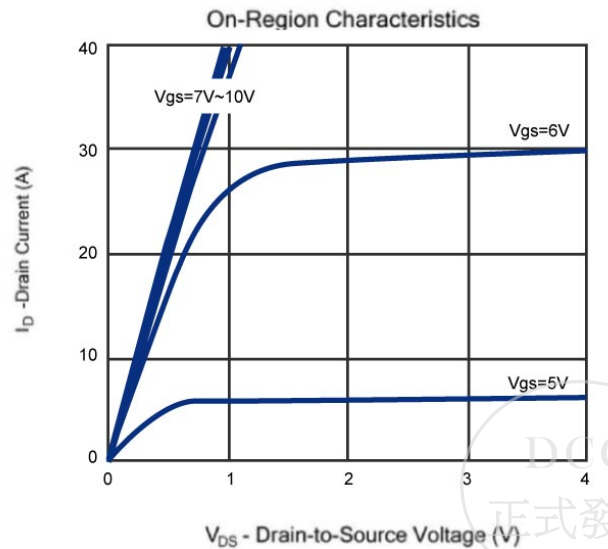
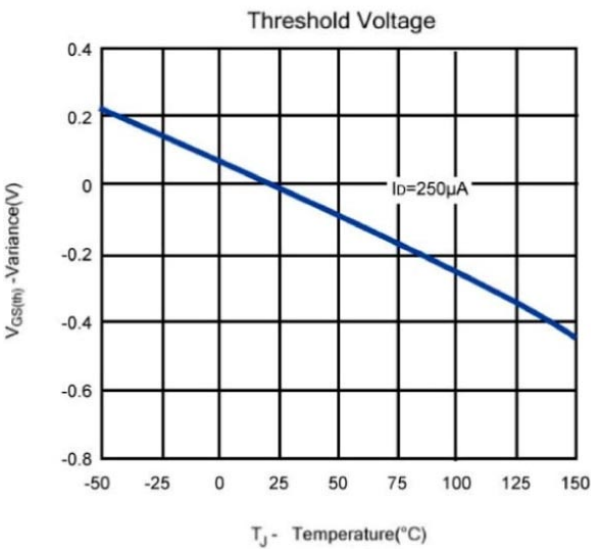
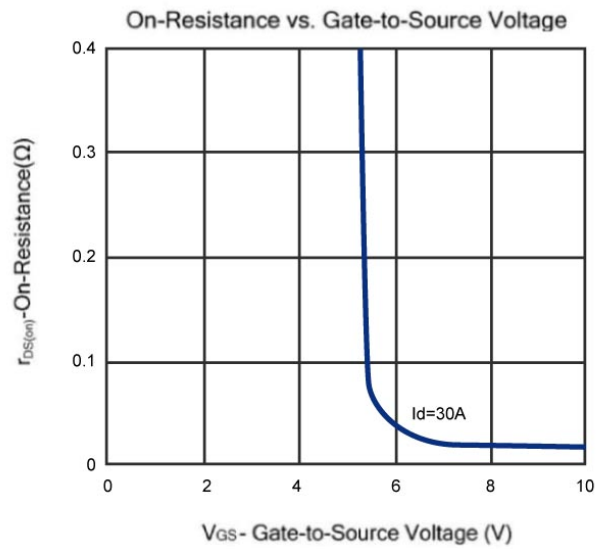
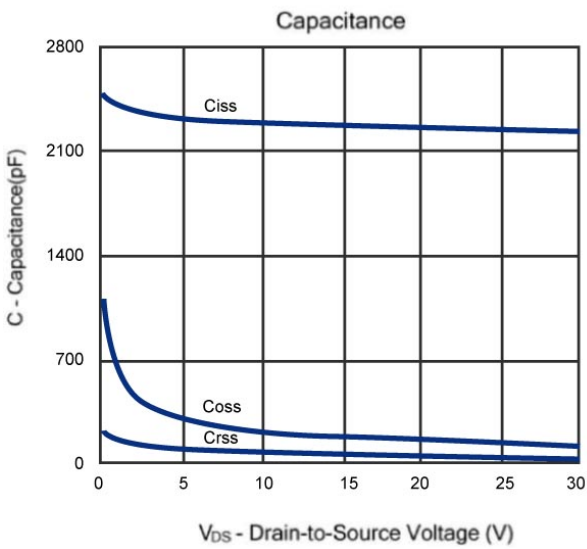
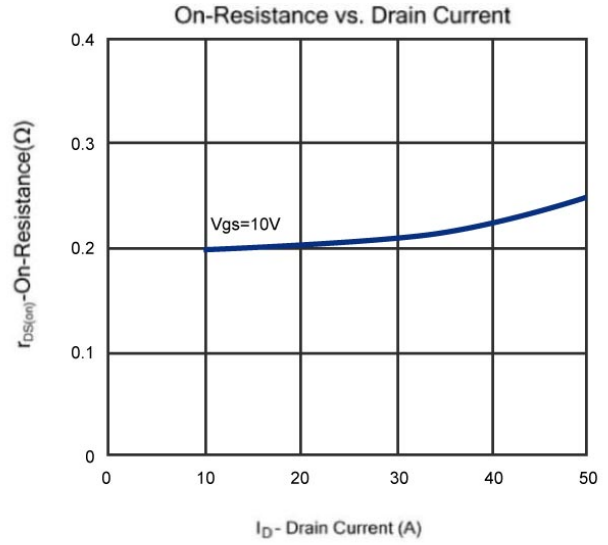
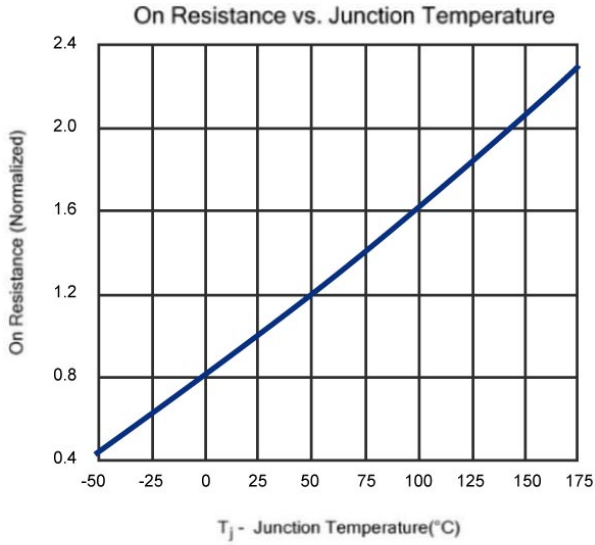
Notes: a. pulse test: pulse width ≤ 300us, duty cycle ≤ 2%, Guaranteed by design, not subject to production testing.

b. Matsuki Electric/ Force mos reserves the right to improve product design, functions and reliability without notice.



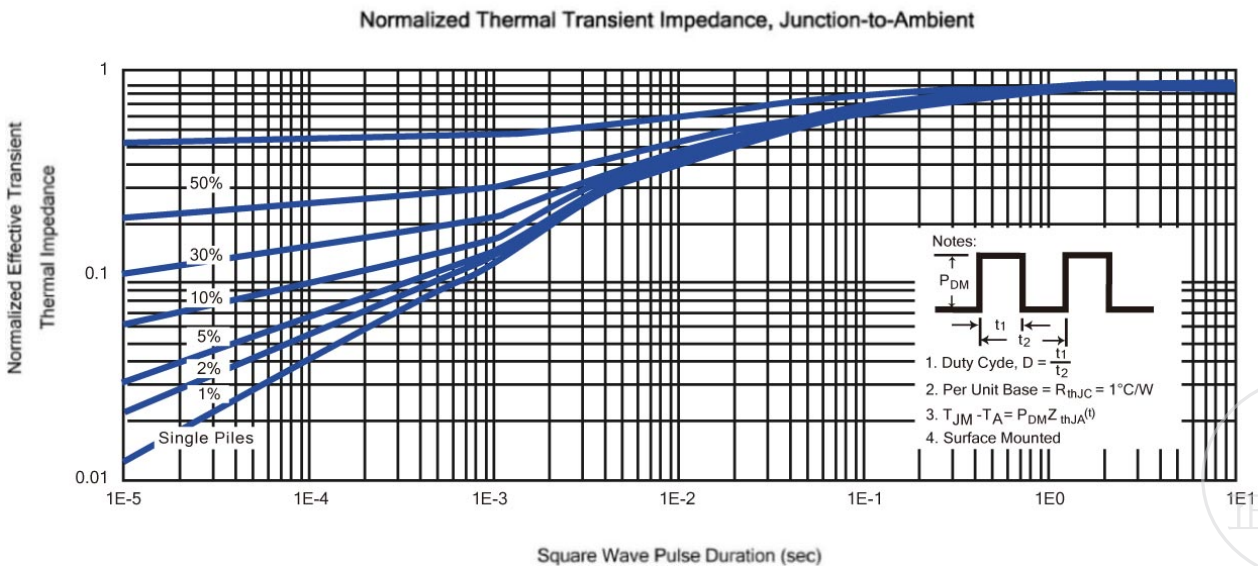
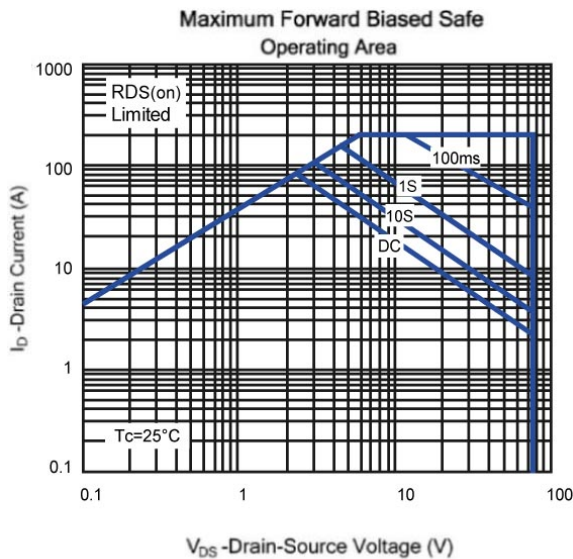
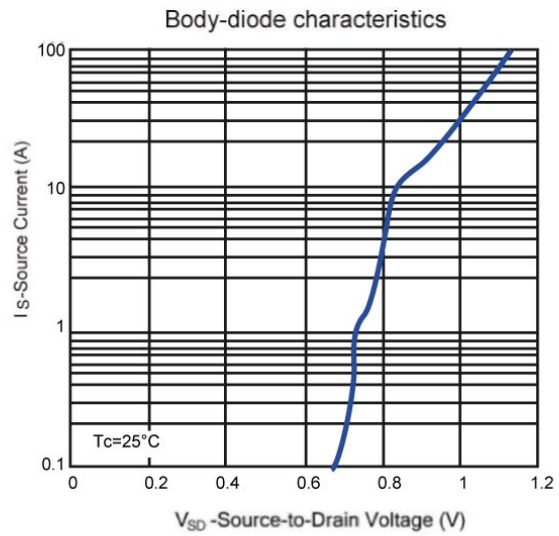
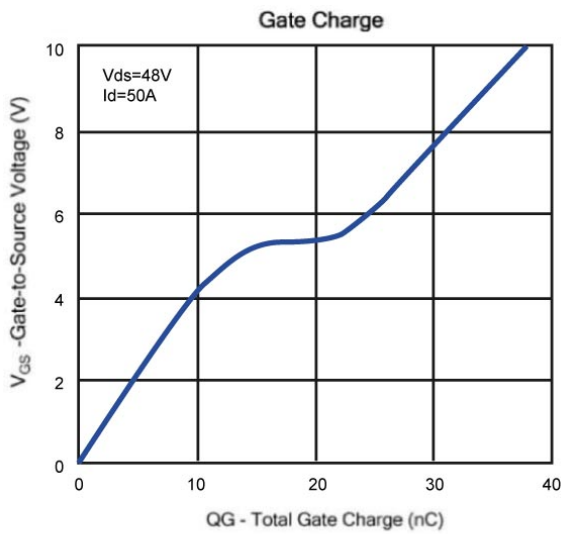
N-Channel 75-V (D-S) MOSFET

Typical Characteristics (T_J =25°C Noted)

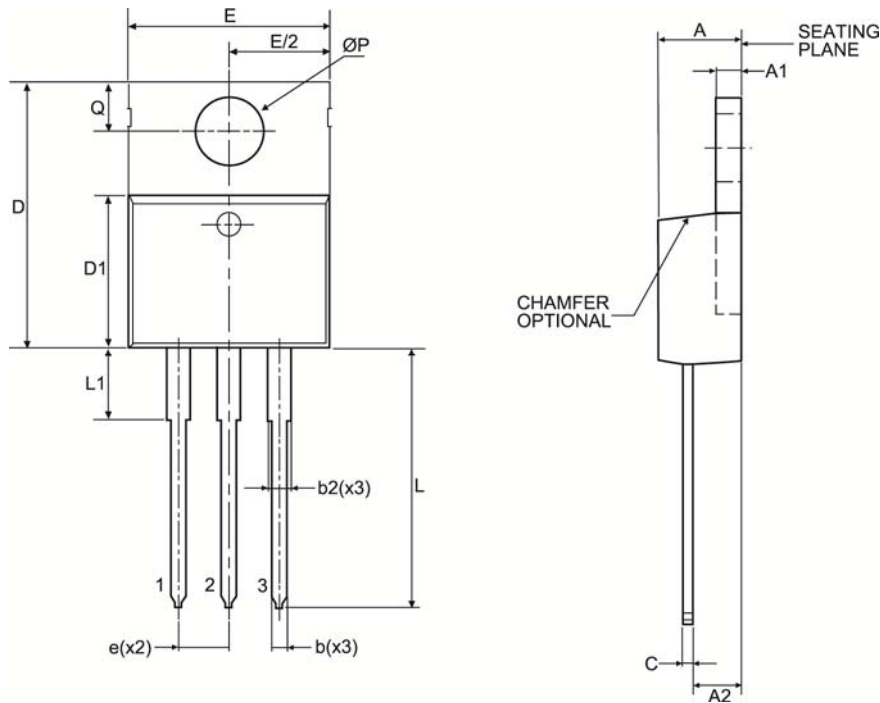


N-Channel 75-V (D-S) MOSFET

Typical Characteristics (T_J =25°C Noted)



TO-220 Package Outline



Symbol	MILLIMETERS (mm)	
	MIN	MAX
A	3.50	4.90
A1	1.00	1.40
A2	2.00	3.00
b	0.70	1.40
c	0.35	0.65
D	14.00	16.50
D1	8.30	9.50
E	9.60	10.70
e	2.54 BSC	
L	12.50	15.00
$\varnothing P$	3.60 TYP	
Q	2.50	3.10
b2	1.10	1.80
L1	2.40	3.20



X-ON Electronics

Largest Supplier of Electrical and Electronic Components

Click to view similar products for [MOSFET](#) category:

Click to view products by [MQTSUKI](#) manufacturer:

Other Similar products are found below :

[614233C](#) [648584F](#) [MCH3443-TL-E](#) [MCH6422-TL-E](#) [FDPF9N50NZ](#) [FW216A-TL-2W](#) [FW231A-TL-E](#) [APT5010JVR](#) [NTNS3A92PZT5G](#)
[IRF100S201](#) [JANTX2N5237](#) [2SK2464-TL-E](#) [2SK3818-DL-E](#) [FCA20N60_F109](#) [FDZ595PZ](#) [STD6600NT4G](#) [FSS804-TL-E](#) [2SJ277-DL-E](#)
[2SK1691-DL-E](#) [2SK2545\(Q,T\)](#) [D2294UK](#) [405094E](#) [423220D](#) [MCH6646-TL-E](#) [TPCC8103,L1Q\(CM](#) [367-8430-0972-503](#) [VN1206L](#)
[424134F](#) [026935X](#) [051075F](#) [SBVS138LT1G](#) [614234A](#) [715780A](#) [NTNS3166NZT5G](#) [751625C](#) [873612G](#) [IRF7380TRHR](#)
[IPS70R2K0CEAKMA1](#) [RJK60S3DPP-E0#T2](#) [RJK60S5DPK-M0#T0](#) [APT5010JVFR](#) [APT12031JFLL](#) [APT12040JVR](#) [DMN3404LQ-7](#)
[NTE6400](#) [JANTX2N6796U](#) [JANTX2N6784U](#) [JANTXV2N5416U4](#) [SQM110N05-06L-GE3](#) [SIHF35N60E-GE3](#)