

## QUICK CONNECT SELECTION GUIDE



*BU-190170031*



*BU-190230005*



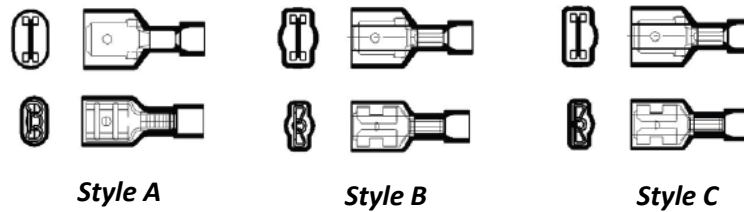
*BU-190170047*



*AI-50207*

- Mueller offers a wide range of quick connects that are suitable for a variety of applications.
- 4 different wire ranges
  - 12-10AWG
  - 16-14AWG
  - 22-18AWG
  - 22-16AWG
- 3 different tab sizes in both male and female
  - .250 X .032
  - .187 X .032
  - .187 X .020
- 4 different insulation styles
  - Nyax heat shrink
  - Nylon (fully insulated and partially insulated)
  - Vinyl
- Terminals are made of 260 hard brass with electro-tin plating
- Rated Voltage: 300V
- Single crimp terminals
- Solid or stranded wire accepted
- Recommended strip length: 1/4"

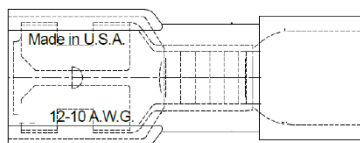
**Fully Insulated Style Guide**  
(Refer to "style" column in tables below)



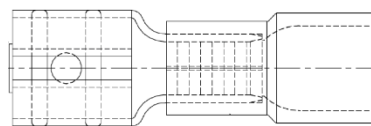
## 12-10AWG QUICK CONNECTS

PART NUMBER	AWG SIZE	MALE/FEMALE	TAB SIZE	INSULATION MATERIAL	FULLY INSULATED	STYLE	Temp Rating (°C)
AI-70213	12-10	FEMALE	.250 X .032	NYAX HEAT SHRINK	YES	N/A	125
AI-20167N*	12-10	FEMALE	.187 X .032	NYLON	PARTIAL	N/A	75
AI-50187N	12-10	FEMALE	.250 X .032	NYLON	PARTIAL	N/A	75
AI-50213	12-10	FEMALE	.250 X .032	NYLON	YES	B	75
BU-190070040*	12-10	FEMALE	.250 X .032 (FLAG)	NYLON	YES	N/A	105
AI-20167*	12-10	FEMALE	.187 X .032	VINYL	PARTIAL	N/A	75
BU-190170047	12-10	FEMALE	.250 X .032	VINYL	PARTIAL	N/A	75
AI-70212	12-10	MALE	.250 X .032	NYAX HEAT SHRINK	YES	N/A	125
AI-50186N*	12-10	MALE	.250 X .032	NYLON	PARTIAL	N/A	75
AI-50212	12-10	MALE	.250 X .032	NYLON	YES	B	75
BU-190230008*	12-10	MALE	.250 X .032	VINYL	PARTIAL	N/A	75

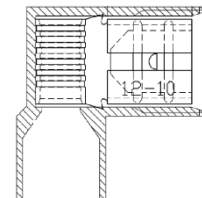
**FULLY INSULATED**



**PARTIALLY INSULATED**



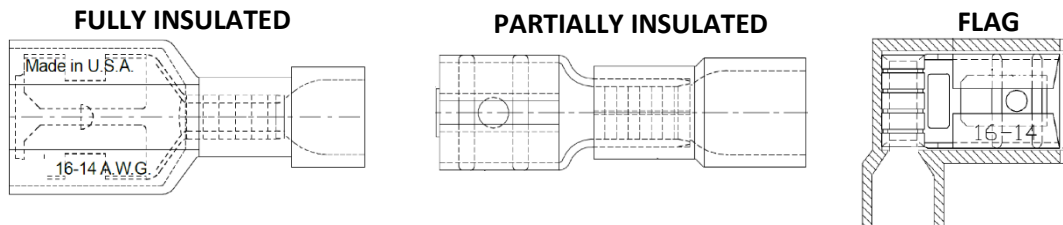
**FLAG**



\*UL LISTED --ALL DIMENSIONS ARE IN INCHES --CELL COLOR DEPICTS INSULATION COLOR

# 16-14AWG QUICK CONNECTS

PART NUMBER	AWG SIZE	MALE/FEMALE	TAB SIZE	INSULATION MATERIAL	FULLY INSULATED	STYLE	TEMP RATING (°C)
AI-70209	16-14	FEMALE	.250 X .032	NYAX HEAT SHRINK	YES	N/A	125
BU-190030040*	16-14	FEMALE	.250 X .032	NYLON	YES	A	105
AI-50209	16-14	FEMALE	.250 X .032	NYLON	YES	B	75
BU-19005-005	16-14	FEMALE	.250 X .032	NYLON	YES	C	105
AI-50195N	16-14	FEMALE	.187 X .020	NYLON	PARTIAL	N/A	75
AI-50180N	16-14	FEMALE	.250 X .032	NYLON	PARTIAL	N/A	75
BU-190070021*	16-14	FEMALE	.250 X .032 (FLAG)	NYLON	PARTIAL	N/A	105
BU-190170031	16-14	FEMALE	.187 X .020	VINYL	PARTIAL	N/A	75
BU-190170037	16-14	FEMALE	.250 X .032	VINYL	PARTIAL	N/A	75
AI-70208	16-14	MALE	.250 X .032	NYAX HEAT SHRINK	YES	N/A	125
AI-50208	16-14	MALE	.250 X .032	NYLON	YES	B	75
BU-190040005	16-14	MALE	.250 X .032	NYLON	YES	C	105
AI-50198N	16-14	MALE	.187 X .020	NYLON	PARTIAL	N/A	75
AI-50181N*	16-14	MALE	.250 X .032	NYLON	PARTIAL	N/A	75
BU-190230010	16-14	MALE	.187 X .020	VINYL	PARTIAL	N/A	75
BU-190230012	16-14	MALE	.250 X .032	VINYL	PARTIAL	N/A	75



\*UL LISTED -ALL DIMENSIONS ARE IN INCHES --CELL COLOR DEPICTS INSULATION COLOR

Mueller Electric Company  
2850 Gilchrist Rd. Bld 5A  
Akron, OH 44305

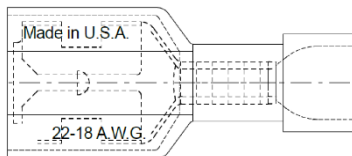
[www.muellerelectric.com](http://www.muellerelectric.com)

Toll Free: 800.955.2629  
Phone: 330.780.2525  
Fax: 330.780.2524

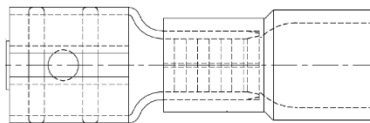
## 22-18AWG QUICK CONNECTS

PART NUMBER	AWG SIZE	MALE/FEMALE	TAB SIZE	INSULATION MATERIAL	FULLY INSULATED	STYLE	TEMP RATING (°C)
AI-70207	22-18	FEMALE	.250 X .032	NYAX HEAT SHRINK	YES	N/A	125
AI-50207	22-18	FEMALE	.250 X .032	NYLON	YES	B	75
BU-19005-0001	22-18	FEMALE	.250 X .032	NYLON	YES	C	105
BU-190070001*	22-18	FEMALE	.250 X .032 (FLAG)	NYLON	YES	N/A	105
AI-50192N	22-18	FEMALE	.187 X .020	NYLON	PARTIAL	N/A	75
BU-190170007	22-18	FEMALE	.187 X .020	VINYL	PARTIAL	N/A	75
AI-70206	22-18	MALE	.250 X .032	NYAX HEAT SHRINK	YES	N/A	125
AI-50206	22-18	MALE	.250 X .032	NYLON	YES	B	75
BU-190040001	22-18	MALE	.250 X .032	NYLON	YES	C	105
AI-50197N	22-18	MALE	.187 X .020	NYLON	PARTIAL	N/A	75
AI-50177N*	22-18	MALE	.250 X .032	NYLON	PARTIAL	N/A	75
BU-190230003	22-18	MALE	.187 X .020	VINYL	PARTIAL	N/A	75
BU-190230005*	22-18	MALE	.250 X .032	VINYL	PARTIAL	N/A	75

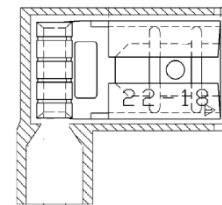
**FULLY INSULATED**



**PARTIALLY INSULATED**



**FLAG**



\*UL LISTED -ALL DIMENSIONS ARE IN INCHES --CELL COLOR DEPICTS INSULATION COLOR

Mueller Electric Company  
2850 Gilchrist Rd. Bld 5A  
Akron, OH 44305

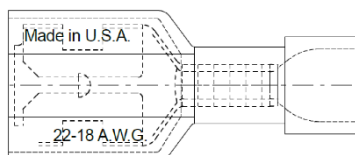
[www.muellerelectric.com](http://www.muellerelectric.com)

Toll Free: 800.955.2629  
Phone: 330.780.2525  
Fax: 330.780.2524

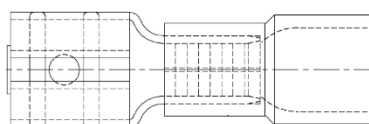
## 22-16AWG QUICK CONNECTS

<i>PART NUMBER</i>	<i>AWG SIZE</i>	<i>MALE/FEMALE</i>	<i>TAB SIZE</i>	<i>INSULATION MATERIAL</i>	<i>FULLY INSULATED</i>	<i>STYLE</i>	<i>TEMP RATING (°C)</i>
<b>BU-190030001*</b>	22-16	FEMALE	.250 X .032	NYLON	YES	A	105
<b>AI-50176N</b>	22-16	FEMALE	.250 X .032	NYLON	PARTIAL	N/A	75
<b>BU-190170014</b>	22-16	FEMALE	.250 X .032	VINYL	PARTIAL	N/A	75

**FULLY INSULATED**



**PARTIALLY INSULATED**



\*UL LISTED    -ALL DIMENSIONS ARE IN INCHES    --CELL COLOR DEPICTS INSULATION COLOR

## X-ON Electronics

Largest Supplier of Electrical and Electronic Components

*Click to view similar products for [Terminals](#) category:*

*Click to view products by [Mueller](#) manufacturer:*

Other Similar products are found below :

[00-054007-01074-6](#) [00-054007-70206-1](#) [00-054007-70210-8](#) [00-054007-70217-7](#) [00-054007-70228-3](#) [00-054007-70256-6](#) [00-054007-70316-7](#) [00-054007-49560-4](#) [00-054007-70209-2](#) [00-054007-70231-3](#) [00-054007-70241-2](#) [00-054007-70242-9](#) [00-054007-70246-7](#) [00-054007-70263-4](#) [00-054007-70288-7](#) [00-054007-70290-0](#) [00-054007-70300-6](#) [00-054007-70304-4](#) [01-2900-1-04412](#) [00581P0075](#) [600TS-10](#) [605601-1](#) [60598-1-CUT-TAPE](#) [60617-1-C](#) [61314-6-C](#) [61810-3](#) [62149-1](#) [626-0194](#) [63-S](#) [M55155/059I03](#) [M55155/079C01](#) [M55155/099B03](#) [M55155/099H02](#) [M55155/109H01](#) [M55155/12XH05](#) [M55155/29-5S](#) [M55155/29XJ08](#) [M55155/30-6S](#) [M55155/30-9S](#) [M55155/30XI09](#) [M6-14RSX](#) [696683-1](#) [696861-1](#) [696999-1](#) [M86700006](#) [D18-110B-C](#) [D18-110B-M](#) [701-1936](#) [701-1955](#) [701-2003](#)