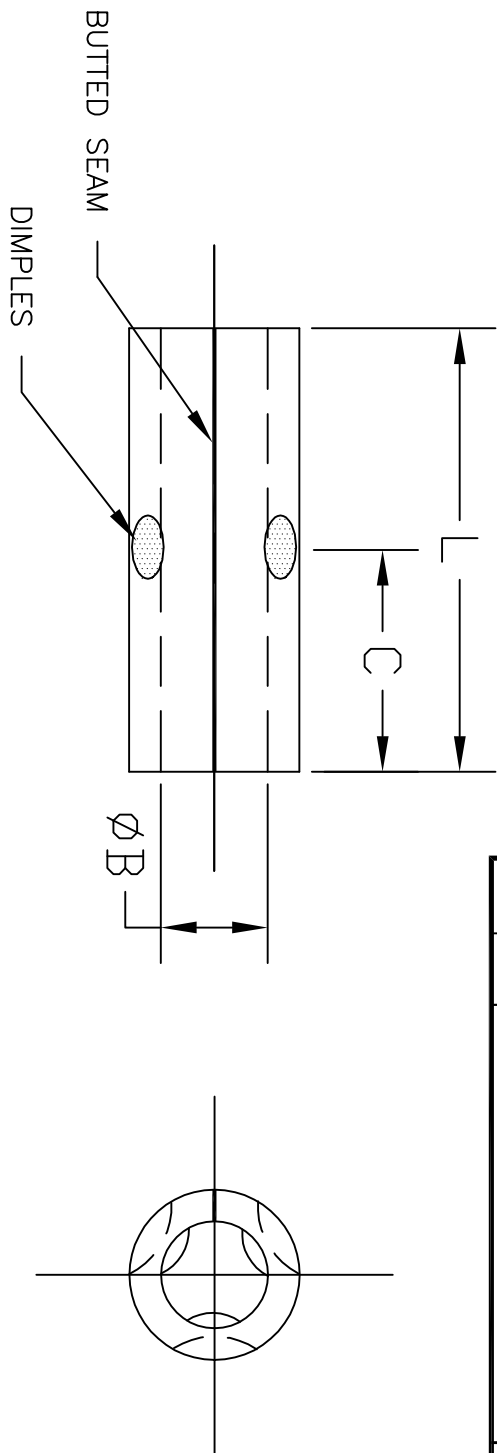


ALL RIGHTS RESERVED. NO PORTION OF THIS PUBLICATION, WHETHER IN WHOLE OR IN PART CAN BE REPRODUCED WITHOUT THE EXPRESS WRITTEN CONSENT OF SPC TECHNOLOGY.

REVISIONS				DOC. NO.	SPC-F005	* Effective: 12/21/98	* DCP No. 68	
DCP #	REV	DESCRIPTION	DRAWN	DATE	CHECKD	DATE	APPRD	DATE
	A	Rerdrawn in AutoCad	JAP	11/12/91				
1116	B	Was Dwg #CCS-TO-1*1*-HT	JWM	6/01/01	JC	6/20/01	JC	6/20/0



PART NO.	WIRE RANGE (AWG)	DIAMETER 'B'	L	C	WALL THICKNESS
CCS-TO-1010-HT	12-10	.135	.56	.28	.040
CCS-TO-1414-HT	16-14	.090	.56	.28	.030
CCS-TO-1818-HT	22-18	.070	.56	.28	.030

NOTES:

1. MATERIAL: ALLOY STEEL
FINISH: NICKEL PLATING
2. CONTINUOUS OPERATING TEMPERATURE: 900°F (482°C)
INTERMITTENT OPERATING TEMPERATURE: 1200°F (649°C)
3. VOLTAGE RATING: 600 V.

DISCLAIMER:
ALL STATEMENTS AND TECHNICAL INFORMATION CONTAINED HEREIN ARE BASED UPON INFORMATION AND/OR TESTS WE BELIEVE TO BE ACCURATE AND RELIABLE. SINCE CONDITIONS OF USE ARE BEYOND OUR CONTROL, THE USER SHALL DETERMINE THE SUITABILITY OF THE PRODUCT FOR THE INTENDED USE AND ASSUME ALL RISK AND LIABILITY WHATSOEVER IN CONNECTION THEREWITH.



SPC TECHNOLOGY

SPC-F005.DWG

Tolerances: Unless Otherwise Specified: .X = ±.015 .XX = ±.010 .XXX = ±.005		DRAWN BY: JC		DATE: 3/4/91
		CHECKED BY: JC		DATE: 11/21/91
		APPROVED BY: JL		DATE: 11/21/91
DRAWING TITLE: High-Temperature Butt Connectors				
SIZE: A	DWG. NO.: TA-350	ELECTRONIC FILE: TA-350.dwg		REV: B
SCALE: NTS	U.O.M.: INCHES [mm]	SHEET: 1		OF 1

X-ON Electronics

Largest Supplier of Electrical and Electronic Components

Click to view similar products for [Multicomp](#) manufacturer:

Other Similar products are found below :

[MCWW25XR220FTL](#) [SPC19952](#) [CR-MS-4](#) [MC23303](#) [1710467](#) [LB324P](#) [SPC19794-RH](#) [MCRF0008](#) [RBH3-16RBVB](#) [MC001599](#)
[OEM203N-240A](#) [MC19678](#) [SPC15268](#) [SPC20045](#) [SPC20494](#) [154-0140](#) [MCPIN-T30L-001](#) [MCPIP-T30L-001](#) [105-0020](#) [MCPIP-T5S-001](#)
[MC001616](#) [082-0323F](#) [MC011473](#) [MC002698](#) [MCFRBTN2400](#) [MCFRBTN2401](#) [RA01A12BSFMSOX](#) [MCVT600](#) [146-0043](#) [082-0043](#)
[LBDI633P](#) [12.99.1150](#) [MC000894](#) [MC21063](#) [MC14665](#) [146-0023](#) [187-0017](#) [MC23725](#) [082-0028F3](#) [082-0002F4](#) [NSYPPA4G](#) [SPC24553](#)
[SPC21178](#) [MC001625](#) [082-0322F](#) [MC011465](#) [MCWF08R2940BTL](#) [15T7C-130V](#) [MC0063W06031215R](#) [069-0002](#)