

Document Number: 82101403L

Copyright and Trademark

This publication may not be reproduced, in whole or in part, without the specific and express prior written permission signed by an executive officer of Multi-Tech Systems, Inc. All rights reserved. Copyright © 2017 by Multi-Tech Systems, Inc.

Multi-Tech Systems, Inc. makes no representations or warranties, whether express, implied or by estoppels, with respect to the content, information, material and recommendations herein and specifically disclaims any implied warranties of merchantability, fitness for any particular purpose and non-infringement. Multi-Tech Systems, Inc. reserves the right to revise this publication without obligation to notify any person or organization of such revisions or changes.

MultiTech, MultiConnect, and the MultiTech logo are registered trademarks of Multi-Tech Systems, Inc. All other brand and product names are trademarks or registered trademarks of their respective companies.

Multi-Tech Systems, Inc

2205 Woodale Drive,
Mounds View, Minnesota 55112 U.S.A.

Phone: 763-785-3500 or 800-328-9717

Fax: 763-785-9874



Support

Support Portal

<https://support.multitech.com>

Europe, Middle East, Africa:

support@multitech.co.uk

+(44) 118 959 7774

Knowledge Base

<http://www.multitech.com/kb.go>

U.S., Canada, all others:

support@multitech.com

(800) 972-2439 or (763) 717-5863

Business Hours: M-F, 8am to 5pm CT

Accessory Cards



Welcome

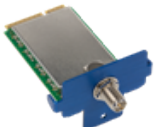
Thank you for purchasing an accessory card for your device. Accessory cards offer a variety of flexible, application specific interfaces that you can customize to your individual needs. Additional Accessory Card information can be found at www.multitech.net.

Types of Accessory Cards



GPIO

This accessory card provides a variety of General Purpose IO functionality to the Conduit gateway platform. It provides three analog inputs, four digital inputs, and four digital outputs.



LoRa

This accessory card provides long range RF support using Semtech's LoRa radio technology. The gateway uses this accessory card to connect MultiTech's mDot products to the cloud.



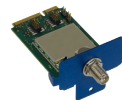
MF5ER

These accessory cards are Multi-Function Serial Accessory cards. They provide standard serial RS 232/422/485 communication for a number of industrial applications using a variety of legacy devices.



Ethernet

The MTAC-ETH accessory card provides an Ethernet connection using an RJ-45 Ethernet 10/100/1000 Connector. The Conduit gateway uses this accessory card to connect to your network or the internet. When configured properly and combined with the appropriate applications, the device also connects with the cloud.



XDOT

This accessory card provides long range RF support using Semtech's LoRa radio technology. The gateway uses this accessory card to connect MultiTech's Dot products to the cloud. It provides a limited functionality gateway and can communicate in peer-to-peer mode.

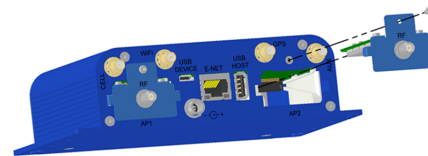
Installing an Accessory Card

You will need:

- Accessory card
- Phillips screwdriver

To install an accessory card:

- Disconnect power to the device, if necessary.
- At the back of the housing, locate the opening where you want the accessory card to be installed. The accessory card can be installed in the AP1 or AP2 opening.
- Remove the port cover and retain the screw for attaching the accessory card.
- Slide the card into the opening and push until you feel the card connector seat in the internal connector.
- Use a small Phillips screwdriver to attach the card bracket to the housing with the small screw from the port cover.



X-ON Electronics

Largest Supplier of Electrical and Electronic Components

Click to view similar products for [Interface Modules](#) category:

Click to view products by [Multitech](#) manufacturer:

Other Similar products are found below :

[CYG2218](#) [FAB118](#) [8500-003](#) [IFD8520](#) [FAB100-RC](#) [20-101-1338](#) [cPCI-3544](#) [CYG2217](#) [CYG2320](#) [422CON](#) [ATX6022/14GP7](#)
[ATX6022/8](#) [AX93221-24/48](#) [cPCI-3538](#) [USB30-MIPI-TESTER-OV10640](#) [MTAC-LORA-H-915](#) [OPT8AP-AE](#) [PCI-7854](#) [60006-016](#)
[96RMKVM-19V1C-A](#) [60016-011](#) [60016-014](#) [60006-008](#) [60016-015](#) [60011-075](#) [LPC1e-3488A](#) [HPCI-14S12U](#) [cBP-3208](#) [cBP-3062A](#)
[FAB205-6P5](#) [FAB114](#) [ATX6022/6](#) [60016-012](#) [96RMKVM-17V1C-A](#) [BB-QCLDVDSV2-KIT](#) [MOS-1120Y-0201E](#) [96RMLCD-17V1-A](#)
[96RMKVM-17V8C-A](#) [60004-005](#) [60016-017](#) [60006-019](#) [60006-009](#) [60004-002C](#) [60016-035](#) [60016-034](#) [60016-031](#) [60016-030](#) [60016-026](#)
[60016-025](#) [60016-024](#)