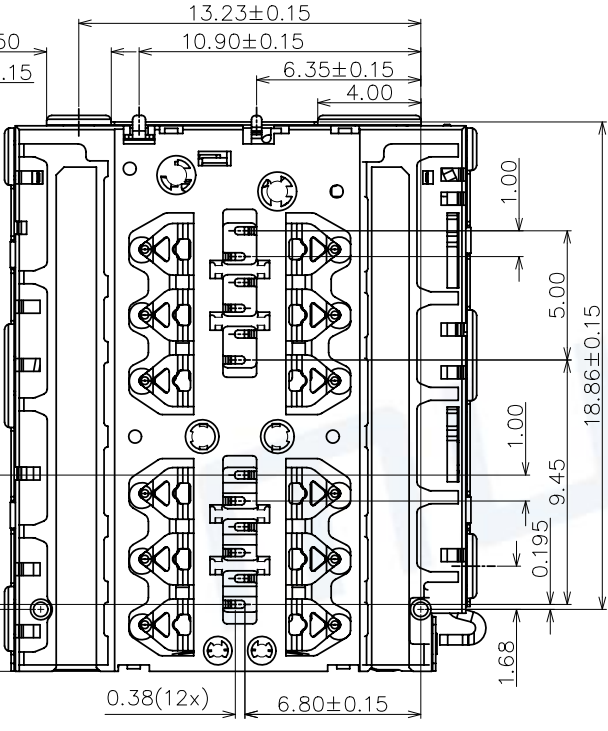
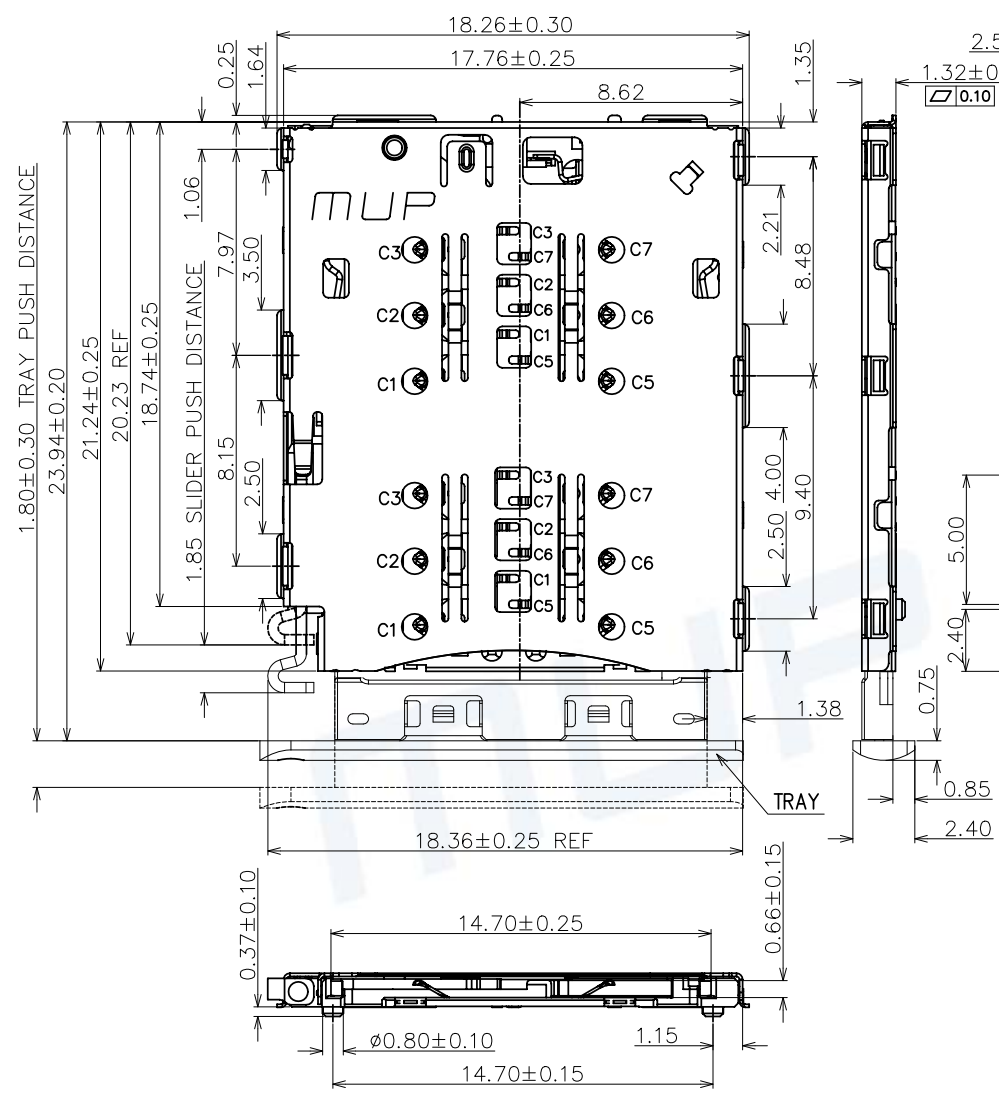


REV.	DESCRIPTION OF REVISIONS	APPR.	CHKD.	DRAW.	DATE
△	NEW			Henry	2018/11/22
△	Original Model C787-1			Henry	2023/10/19



**TECHNICAL CHARACTERISTICS**

1.General Characteristics  
Dimensions:21.24LX17.76WX1.35H mm  
TRAY MATING FORCE:1~10N  
TRAY UNMATING FORCE:2~10N  
Durability:1,500 cycles min.

2.Electrical Characteristics  
Contact resistance:50mΩ typical,  
100mΩMax  
Insulation resistance:>1000MΩ/500V DC

3.Solderability  
Vaporphase:215°C, 30sec.Max  
IR reflow:250°C,5sec.Max  
Manual soldering:370°C,3sec.Max

4.Environmental Characteristics  
Operating temperature:-40°C~+85°C  
Operating humidity:10%~+95%RH

ITEM	PART NAME	Q'TY	MATERIAL	FINISH
1	HOUSING	1	Hi-temp Thermoplastic	Black UL94V-0
2	DATA CONTACT	12	Copper Alloy	Contact area:Gold plated
3	SWITCH	1	Copper Alloy	Contact area:Gold plated
4	SHELL	1	Stainless Steel	Solder area:Gold plated
5	RODKER	1	Stainless Steel	
6	LATCH	2	Stainless Steel	
7	LEVER-BAR	1	Stainless Steel	

Unless otherwise specified, other tolerance are:

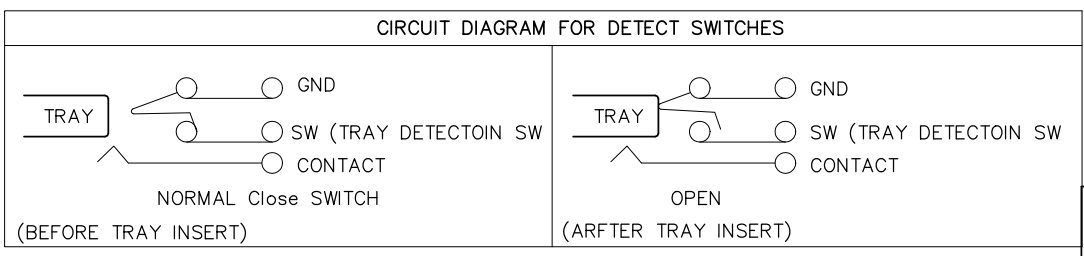
**MUP MUP INDUSTRIAL CO.,LTD.**

NAME: **DUAL NANO-SIM Card Connector**

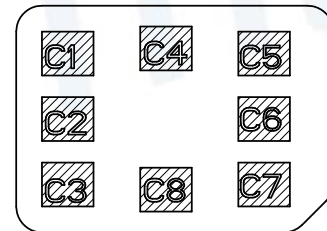
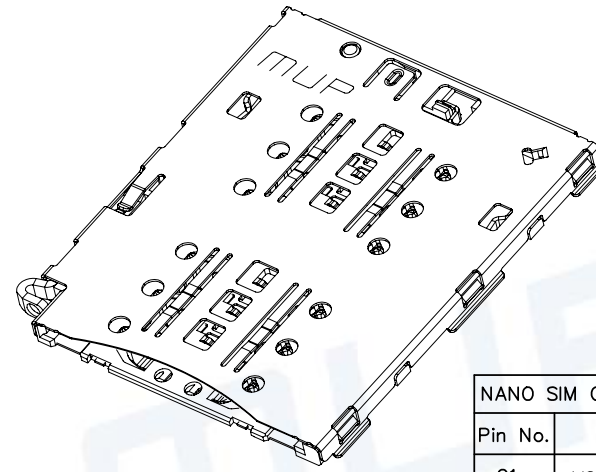
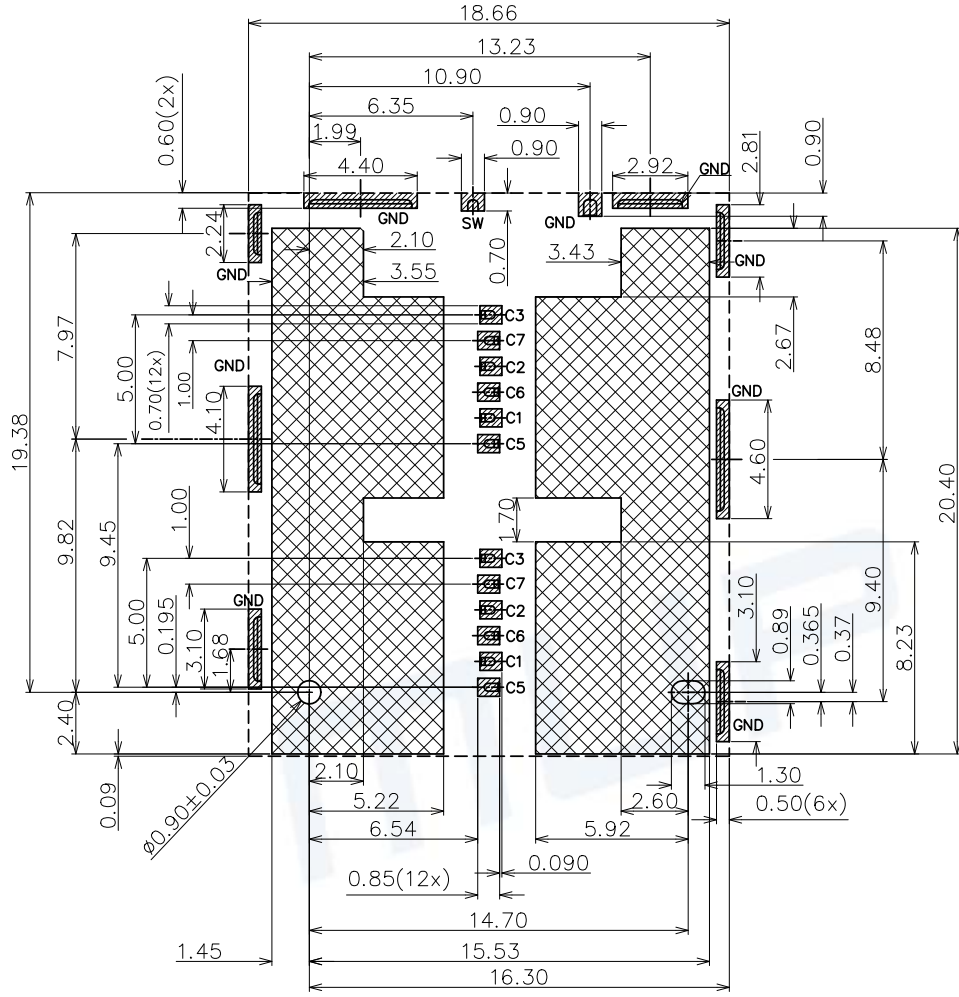
MODEL NO: **MUP-C7087-01**

TYPE : **H1.35mm Normally Colse With Card Tray Type**

PROJ.	UNIT	SCALE	DRAWN	DWG NO.:
①	mm	1:1	Henry Nov.14.2018	DWG-C7087-01-01
CUSTOMER DRAWING			CHECKED	SHEET
			Simon Nov.14.2018	1/2
			APPROVAL	REVISION
				2



REV.	DESCRIPTION OF REVISIONS	APPR.	CHKD.	DRAW.	DATE
△	NEW			Henry	2018/11/22
△	Original Model C787-1			Henry	2023/10/19



NANO SIM CARD

Pin No.	ASSIGNMENT
C1	VCC(SUPPLY VOLTAGE)
C2	RST(RESET SIGNAL)
C3	CLK(CLOCK SIGNAL)
SW	DETECTION SWITCH
GND	GND
C5	GND
C6	VPP(VARIABLE SUPPLY VOLTAGE)
C7	I/O(DATA INPUT/OUTPUT)

RECOMMENDED P.C.B LAYOUT  
 COMPONENT SIDE(TOLERANCE  $\pm 0.05$ )  
 ▨ PAD AREA  
 ▤ KEEP AREA  
 ▩ NO PATTERN AND VIA HOLE IN THIS AREA

ITEM	PART NAME	Q'TY	MATERIAL	FINISH
1	HOUSING	1	Hi-temp Thermoplastic	Black UL94V-0
2	DATA CONTACT	12	Copper Alloy	Contact area:Gold plated
3	SWITCH	1	Copper Alloy	Contact area:Gold plated
4	SHELL	1	Stainless Steel	Solder area:Gold plated
5	RODKER	1	Stainless Steel	
6	LATCH	2	Stainless Steel	
7	LEVER-BAR	1	Stainless Steel	

Unless otherwise specified, other tolerance are:

X	$\pm 0.35$	X*	$\pm 5^\circ$
X.X	$\pm 0.25$	X.X*	$\pm 4^\circ$
X.XX	$\pm 0.15$	X.XX*	$\pm 3^\circ$
X.XXX	$\pm 0.10$	X.XXX*	$\pm 2^\circ$

**MUP MUP INDUSTRIAL CO.,LTD.**

NAME: **DUAL NANO-SIM Card Connector**  
 MODEL NO: **MUP-C7087-01**  
 TYPE : **H1.35mm Normally Colse With Card Tray Type**

PROJ.	UNIT	SCALE	DRAWN	DWG NO.:
①	mm	1:1	Henry Nov.14.2018	DWG-C7087-01-01
CUSTOMER DRAWING			CHECKED	SHEET
			Simon Nov.14.2018	2/2
			APPROVAL	REVISION
				2



## X-ON Electronics

Largest Supplier of Electrical and Electronic Components

*Click to view similar products for [Memory Card Connectors](#) category:*

*Click to view products by [Murata](#) manufacturer:*

Other Similar products are found below :

[6407-249V-25273P](#) [6407-249V-25343P](#) [6426-201-21343](#) [69.920.0553.0](#) [MCR60A-98D-2.54DSA\(70\)](#) [809180410000000](#) [DM3AT-SF-PEJM5\(41\)](#) [IC11S-BUR-PNEJL\(71\)](#) [C70210M0083692](#) [2041353-2](#) [308-DS1P0811-192](#) [HM2P09PDR360N9LF](#) [10014744-011TLF](#) [11327-001](#) [11327-002](#) [NX1-32T-KT3K\(05\)](#) [95622-003LF](#) [84648-056HLF](#) [CCM03-3109 B LFT](#) [MS3116J10-6PW](#) [2309923-1](#) [61126-050CAHLF](#) [GTFP08432B1HR](#) [G85D1160022HHR](#) [SCE2MSDB76A121SN](#) [SCE2MSDZN76A121SN](#) [10014744-011ALF](#) [10014744-011LF](#) [10057542-1211FLF](#) [10067972-000LF](#) [10067972-050LF](#) [10122302-20110LF](#) [G85D1162022HHR](#) [TF-05A](#) [SMN-304-ARP6](#) [MIS11-S1F1-2000-A](#) [SMN-308-ARSP7](#) [MCS-302S-KT1B](#) [SMN-308-ACSP7](#) [K-DYX-008](#) [K-DYX-004](#) [HYCW126-TF18-150B](#) [C7024-03](#) [SMO-1030](#) [MCS-110-KT](#) [SIM-217](#) [SNO-1355-KT](#) [SMO-1025-P10](#) [SIM-211S-P6](#) [SNO-1440](#)