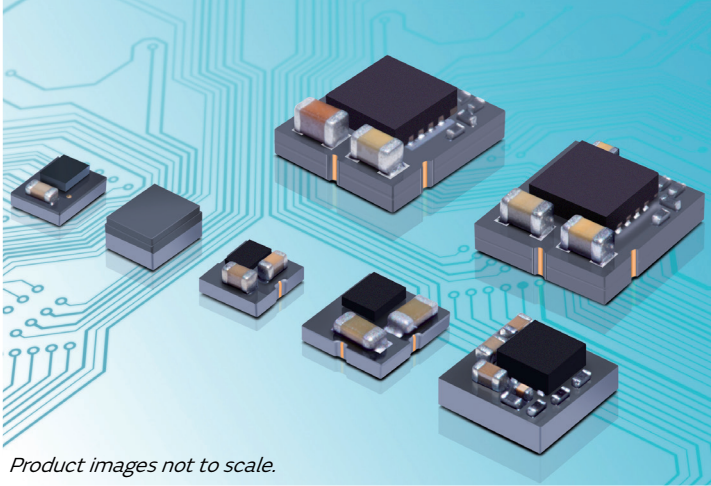


Product Brief

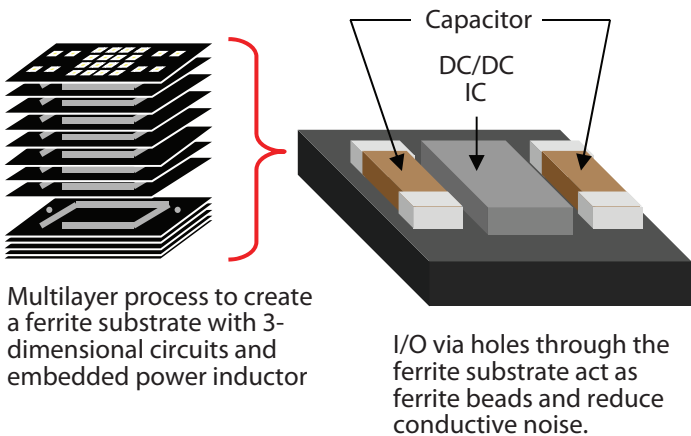
LXDC Series

μ DCDC Converters



Product images not to scale.

Structure



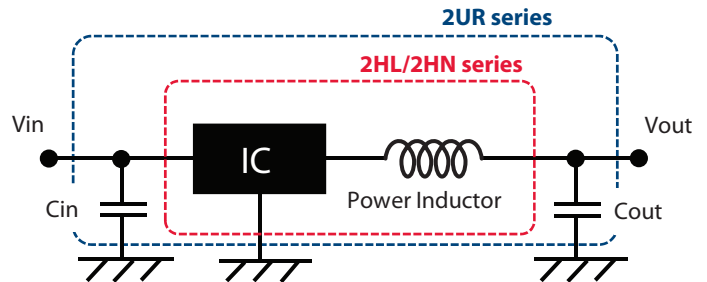
Features

- Low EMI noise and small footprint due to **inductor-embedded ferrite substrate**
- High efficiency using synchronous rectifier technology and PFM/PWM auto-select function (forced mode available on some models)
- Input voltage range: 2.3–5.5V & 4–14V (55F series)
- Load currents available are 600mA, 1A, 1.5A and 3A
- Fixed output voltage & adjustable voltage type (see product line-up table on page two)
- Switching frequency: 3MHz to 6MHz
- Operating temperature range: -40 to +85°C (105°C for 2XQ)

Applications

- Any device currently using discrete DC/DC circuits where downsizing and space savings are required
- Cellular phones, PDAs, mobile internet devices
- Digital cameras, ebooks, tablets, W-LAN, BT
- Portable game consoles, music players, etc.
- Base station, 12V AC/DC adaptor input devices

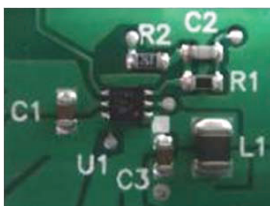
Application Circuit



Note: See page two for circuits specific to each series.

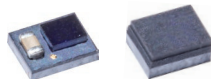
Downsizing Advantage

Discrete Solution



Footprint
35–60mm²

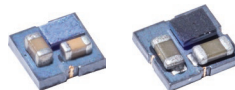
2HL or 2HN Series (0.6A)



2HL 2HN

10mm²
(including two external capacitors)

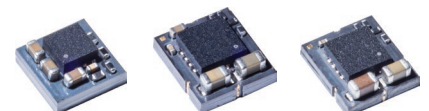
2UR Series (0.6A) 2XQ Series (1.5A)



2UR 2XQ

6–10mm²

44A Series (0.7A) -Boost 55K Series (3A) 55F Series (14V input, 1.5A)



44A 55K 55F

16–28mm²

LXDC Series

μDCDC Converters

Product Line-Up

Type	Load Current	Series	W x L x T (mm)	Application Circuit	Part Number	Input Voltage (V)	Output Voltage (V)	Max. Iout (mA)	Switch. Freq.	Pkg. (pcs/reel)	
Buck	≤0.6A	2HL	2.5×2.0×1.1		LXDC2HL10A-080	2.3-5.5	1.0	600	3MHz	3000	
					LXDC2HL12A-050		1.2				
					LXDC2HL13A-082		1.3				
					LXDC2HL1DA-087		2.35-5.5				1.35
					LXDC2HL15A-051		2.5-5.5				1.5
					LXDC2HL18A-052		2.8-5.5				1.8
		2HNN	2.5×2.0×1.2		LXDC2HL25A-053	3.5-5.5	2.5	500			
					LXDC2HL28A-243	2.3-5.5	2.8	450			
					LXDC2HL30A-054	3.7-5.5	3.0	400			
					LXDC2HL33A-055	3.8-5.5	3.3	300			
					LXDC2HN10A-132	2.3-5.5	1.0	600	3MHz	3000	
					LXDC2HN12A-099		1.2				
	LXDC2HN13A-236	1.3									
	LXDC2HN1DA-133	2.35-5.5	1.35								
	LXDC2HN15A-126	2.5-5.5	1.5								
	LXDC2HN18A-097	2.8-5.5	1.8								
	2UR	2.5×2.3×1.2		LXDC2HN25A-134	3.5-5.5	2.5	500				
				LXDC2HN28A-235	2.3-5.5	2.8	450				
LXDC2HN30A-135				3.7-5.5	3.0	400					
LXDC2HN33A-136				3.8-5.5	3.3	300					
LXDC2UR12A-118				2.3-5.5	1.2	600	6MHz	3000			
LXDC2UR15A-119					1.5						
LXDC2UR18A-120	1.8										
LXDC2UR30A-143	3.7-5.5	3.0									
LXDC2UR33A-122	3.8-5.5	3.3									
≤1.5A	2XQ	2.6×2.8×1.14			LXDC2UR25A-134				2.7-5.5	1.0	1.5A
				LXDC2XQ11A-298	1.2						
				LXDC2XQ12A-252	1.35						
				LXDC2XQ1DA-299	1.5						
				LXDC2XQ18A-253	1.8						
				LXDC2XQ25A-300	2.5						
				LXDC2XQ33A-254	3.0						
				≤3A	55K	5.7×5.0×2.1		LXDC2XQ10A-251		2.7-5.5	
LXDC55KAAA-205	Set by trim resistor										
≤1.5A	55F	5.7×5.0×2.1		LXDC55FAAA-203	4.0-14.0	0.8-5.3	1500	2.5MHz	1000		
Buck/Boost	≤1A Buck Mode/ ≤800mA Boost Mode	3EC	3.5×3.2×1.3		LXDC3ECAAD-202	2.5-5.5	3.2-3.4V Set at factory	≤1A Buck Mode/ ≤800mA Boost Mode	6MHz	1000	
Boost	≤0.7A	44A	4.0×4.0×2.0		LXDC44AAAC-169	2.7-5.5	5.0	700	3.3MHz	1000	

Contents subject to change without notice. Product images not to scale.

X-ON Electronics

Largest Supplier of Electrical and Electronic Components

Click to view similar products for [Non-Isolated DC/DC Converters](#) category:

Click to view products by [Murata](#) manufacturer:

Other Similar products are found below :

[PSR152.5-7IR](#) [APTH003A0X-SRZ](#) [SPM1004-3V3C](#) [R-785.0-05](#) [10E24-P15-10PPM](#) [1E24-P4-25PPM-SHV-5KV](#) [PROPOWER-3.3V](#)
[MYGTM01210BZN](#) [JRCS016A0S4-HZ](#) [40C24-N250-I5-H](#) [10C24-N250-I10-AQ-DA](#) [4AA24-P20-M-H](#) [3V12-N0.8](#) [3V24-P1](#) [3V24-N1](#)
[BMR4672010/001](#) [BMR4652010/001](#) [T31SN12008NMFA](#) [6AA24-P30-I5-M](#) [6AA24-N30-I5-M](#) [BM2P101X-Z](#) [ROF-78E12-0.5SMD-R](#)
[RPMA5.0-8.0/OF](#) [PTV03010WAD](#) [PTV05020WAH](#) [PTV12010LAH](#) [PTV12020WAD](#) [R-7212D](#) [R-7212P](#) [R-78AA5.0-1.0SMD](#) [30A24-](#)
[N15-E](#) [10A12-P4-M](#) [10C24-N250-I5](#) [10C24-P125](#) [10C24-P250-I5](#) [6A24-P20-I10-F-M-25PPM](#) [1A24-P30-F-M-C](#) [TSR 1-24150SM](#)
[1/2AA24-N30-I10](#) [1C24-N125](#) [12C24-N250](#) [V7806-1500](#) [PTV12020LAH](#) [PTV05010WAH](#) [PTN04050CAZT](#) [PTH12020WAD](#)
[PTH12020LAS](#) [PTH05050YAH](#) [PTH05T210WAH](#) [PTH05030WAZ](#)