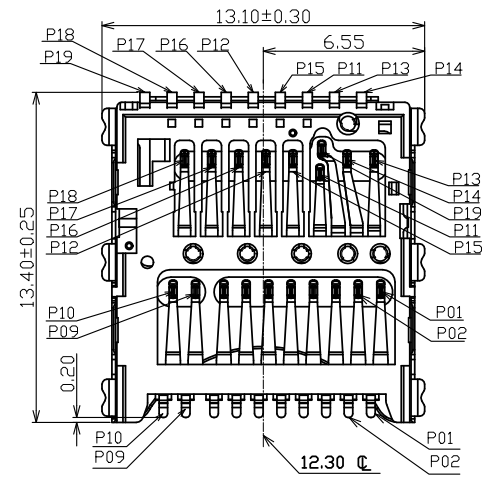
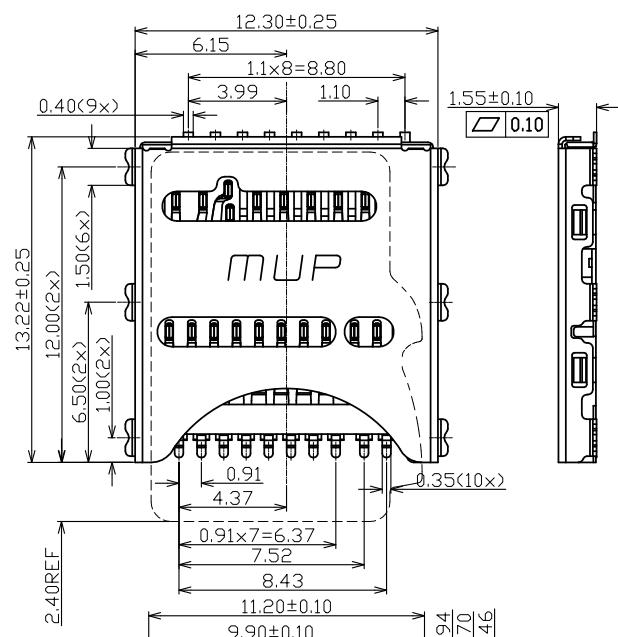
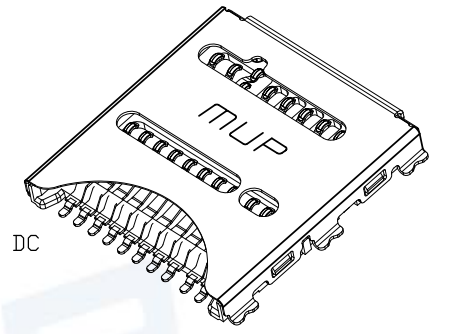


REV.	DESCRIPTION OF REVISIONS	APPR.	DRAW.	RELEASE	DATE
X1	NEW REVISION				Aug.23.2018
X2					



**TECHNICAL CHARACTERISTICS**  
 1.General Characteristics  
 Dimensions:13.22LX12.30WX1.55H mm  
 Weight:Approx 0.5g  
 Durability:1,500 cycles min.  
 2.Electrical Characteristics  
 Contact resistance:50mΩ typical, 100mΩMax  
 Insulation resistance:>1000m/500V DC  
 3.Solderability  
 Vaporphase:215°C, 30sec.Max  
 IR reflow:260°C,5~10sec.Max  
 Manual soldering:370°C.3sec.Max  
 4.Environmental Characteristics  
 Operating temperature:-25°C~+85°C  
 Storage Temperature :-40°C~+85°C  
 Operating humidity:10%~+95%RH

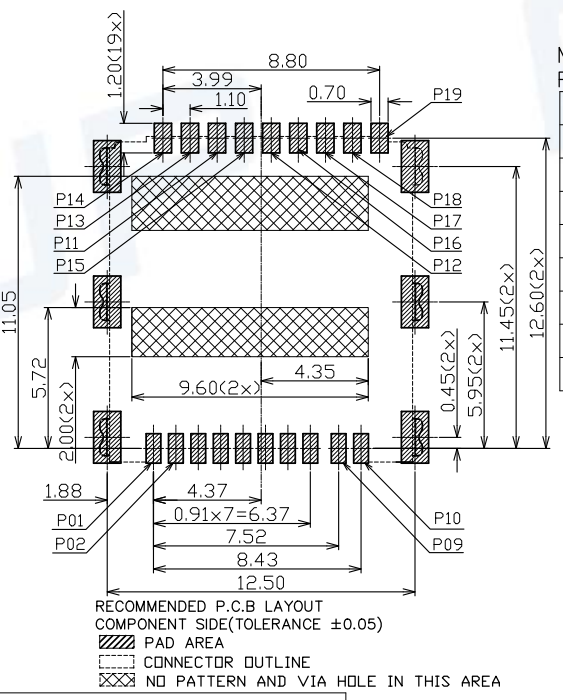
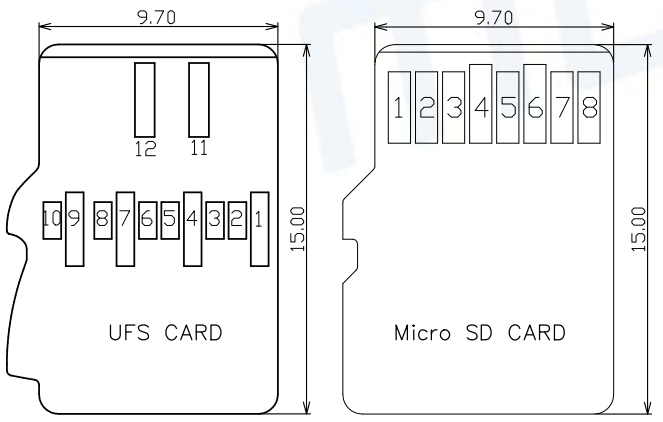


**UFS CARD PIN FUNCTION DEFINITION:**

UFS card	UFS socket	FUNCTION
P01	→ P01	VSS
P02	→ P02	DIN_C
P03	→ P03	DIN_T
P04	→ P04	VSS
P05	→ P05	DOUT_C
P06	→ P06	DOUT_T
P07	→ P07	VSS
P08	→ P08	REF_CLK
P09	→ P09	VCCQ2
P10	→ P10	C/D(GND)
P11	→ P11 P19	VSS
P12	→ P12	VCC

**MICRO SD CARD PIN FUNCTION DEFINITION:**

SD card	UFS socket	FUNCTION
P01	→ P18	DATA LINE(BIT 2)
P02	→ P17	CARD DETECT/ DATA LINE(BIT 3)
P03	→ P16	COMMAND RESPONSE
P04	→ P12	SUPPLY VOLTAGE
P05	→ P15	CLOCK
P06	→ P11 P19	SUPPLY VOLTAGE GROUND
P07	→ P14	DATA LINE(BIT 0)
P08	→ P13	DATA LINE(BIT 1)



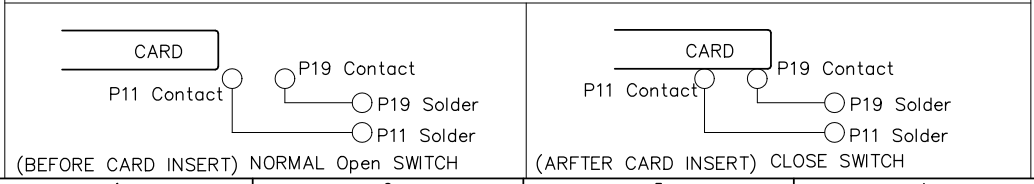
RECOMMENDED P.C.B LAYOUT  
 COMPONENT SIDE(TOLERANCE ±0.05)  
 ▨ PAD AREA  
 - - - CONNECTOR OUTLINE  
 ▨ NO PATTERN AND VIA HOLE IN THIS AREA

ITEM	PART NAME	Q'TY	MATERIAL	FINISH
1	HOUSING	1	Hi-temp Thermoplastic	Black UL94V-0
2	DATA CONTACT	18	Copper Alloy	Contact area:Gold plated
3	SWITCH	1	Copper Alloy	Contact area:Gold plated
4	SHELL	1	Stainless Steel	Solder area:Gold plated

Unless otherwise specified, other tolerance are:  
**MUP MUP INDUSTRIAL CO.,LTD.**

X ±0.35	X* ±5°	NAME:	<b>UFS Card Connector</b>	
X.X ±0.25	X.X* ±4°	MODEL NO.:	<b>MUP-M6101-1</b>	
X.XX ±0.15	X.XX* ±3°	TYPE :	<b>H1.55mm with switch pin</b>	
X.XXX ±0.10	X.XXX* ±2°	PROJ.	UNIT	SCALE
		mm	1:1	
CUSTOMER DRAWING		DRAWN	Henry Aug.23.2018	DWG NO.:
		CHECKED	Henry Aug.23.2018	DWG-MUP-M6101-1
		APPROVAL	Simon Aug.23.2018	SHEET
				1/1
				REVISION
				X1

**CIRCUIT DIAGRAM FOR DETECT SWITCHES**



## X-ON Electronics

Largest Supplier of Electrical and Electronic Components

*Click to view similar products for [Memory Card Connectors](#) category:*

*Click to view products by [Murata](#) manufacturer:*

Other Similar products are found below :

[M21-033321-005](#) [6407-249V-25273P](#) [6407-249V-25343P](#) [6426-201-21343](#) [69.920.0553.0](#) [MCR60A-98D-2.54DSA\(70\)](#) [809180410000000](#)  
[DM3AT-SF-PEJM5\(41\)](#) [IC11S-BUR-PNEJL\(71\)](#) [252-0144-000](#) [2041353-2](#) [308-DS1P0811-192](#) [HM2P09PDR360N9LF](#) [10014744-011TLF](#)  
[11327-001](#) [11327-002](#) [617230001](#) [NX1-32T-KT3K\(05\)](#) [N7E50-U516RB-50-SIN0005](#) [68-580163-21S](#) [125A-78C00](#) [CCM03-3109 B LFT](#)  
[2309923-1](#) [61126-050CAHLF](#) [IC1GA-68PD-1.27DS-EJ\(72\)](#) [GTFP08432B1HR](#) [SCE2MSDZN76A121SN](#) [10014744-011ALF](#) [10014744-](#)  
[011LF](#) [10057542-1211FLF](#) [10067972-000LF](#) [10067972-050LF](#) [10122302-20110LF](#) [G85D1162022HHR](#) [MUP-C7809-1](#) [NANO SIM 7P](#)  
[H1.37](#) [MICRO SIM 7P H1.35](#) [TF-CARD H1.8 SY](#) [MICRO SIM 6P H1.35](#) [TF-CARD H1.8](#) [TF-115Y-BCP9](#) [TF-115YY-ACP9](#) [SMN-309-](#)  
[ARP6](#) [TF-115Y-ACP9](#) [TF-108-ARP10](#) [SMN-303S-ACP7](#) [SNO-14100](#) [SD-112S](#) [MUP-C7804-1](#) [KH-TF-07DT](#)