

Piezoelectric Sound Components

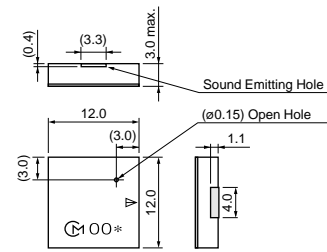


Piezoelectric Sounders External Drive SMD Type

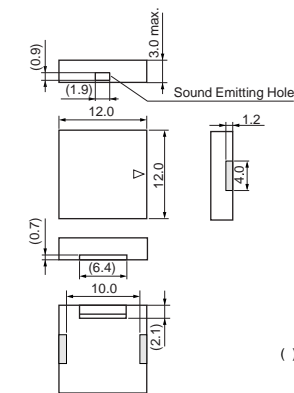
Taking advantage of extensive acoustic and mechanical design technology and high performance ceramics, Murata has developed SMD piezoelectric sounders that suit the thin, high-density design of electronic equipment.

■ Features

1. Small, thin and lightweight
2. High sound pressure level and clear sound
3. Reflowable
4. Tape & Reel supply



() : Ref. only
(in mm)
Tol. ±0.2

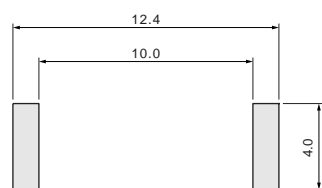


() : Ref. only
(in mm)
Tol. ±0.2

5

| Part Number | Sound Pressure Level (dB) | Operating Voltage Range (Vp-p) | Operating Temp. Range (°C) | Storage Temp. Range (°C) | Use |
|-------------------|--------------------------------------|--------------------------------|----------------------------|--------------------------|----------------------------|
| PKLCS1212E2000-R1 | 70 min.[3Vp-p,2kHz,square wave,10cm] | 25 max. | -20 to +70 | -30 to +80 | For consumer electronics |
| PKLCS1212E20A0-R1 | 70 min.[3Vp-p,2kHz,square wave,10cm] | 25 max. | -40 to +85 | -40 to +85 | For automotive electronics |
| PKLCS1212E4001-R1 | 75 min.[3Vp-p,4kHz,square wave,10cm] | 25 max. | -20 to +70 | -30 to +80 | For consumer electronics |
| PKLCS1212E40A1-R1 | 75 min.[3Vp-p,4kHz,square wave,10cm] | 25 max. | -40 to +85 | -40 to +85 | For automotive electronics |

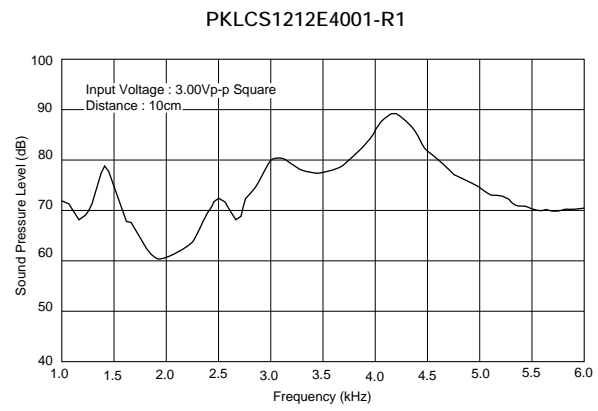
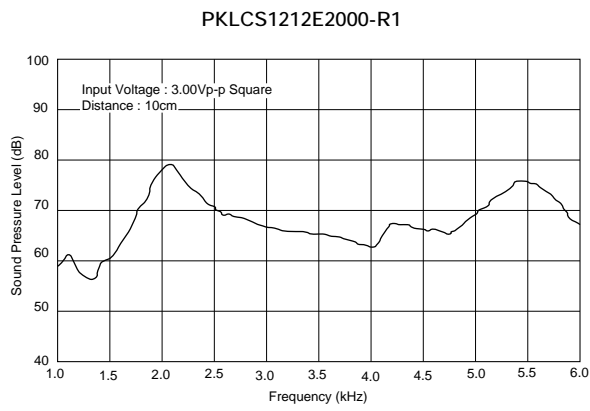
■ Standard Land Pattern Dimensions



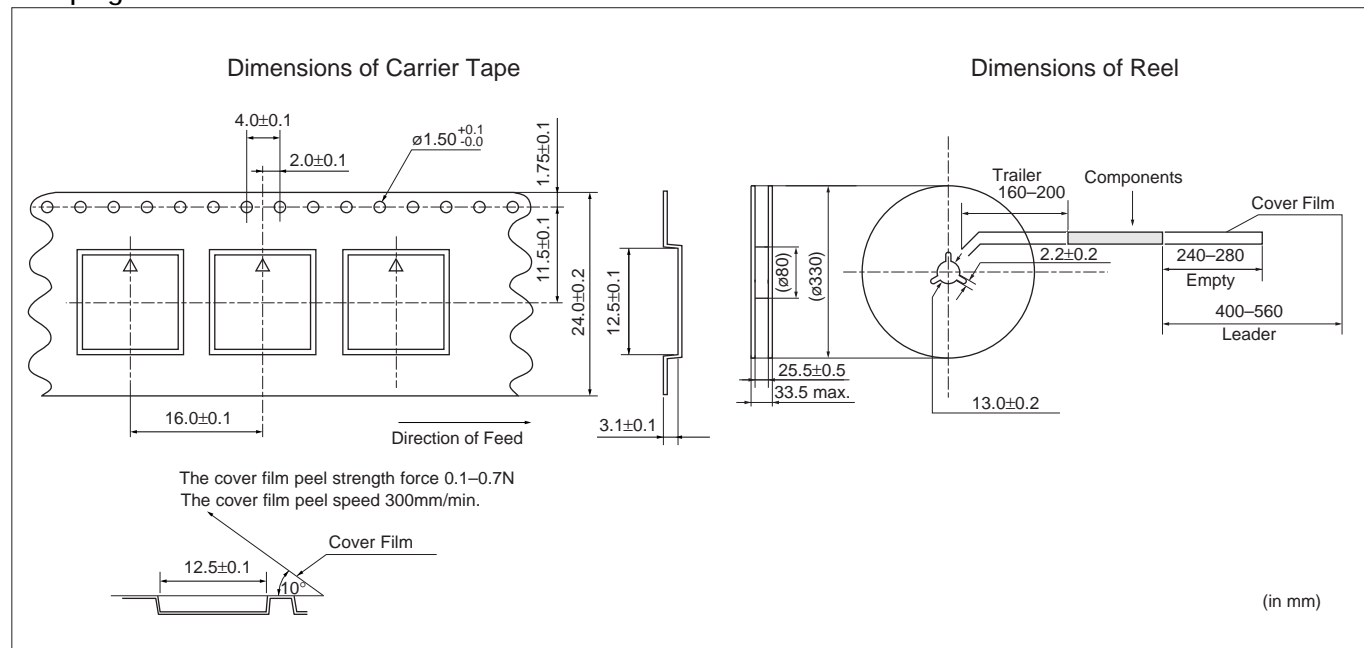
(in mm)

⚠Note • This PDF catalog is downloaded from the website of Murata Manufacturing co., Ltd. Therefore, it's specifications are subject to change or our products in it may be discontinued without advance notice. Please check with our sales representatives or product engineers before ordering.
 • This PDF catalog has only typical specifications because there is no space for detailed specifications. Therefore, please approve our product specifications or transact the approval sheet for product specifications before ordering.

■ Freq. Response (Square Wave 3Vp-p, 10cm)



■ Taping Dimension

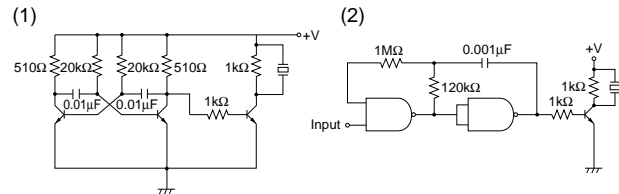


Piezoelectric Sounders (External Drive SMD Type) Circuit/Notice

■ Circuit

The following are examples of externally driven circuits.

- (1) Unstable multi-vibrator using Tr.
- (2) Circuits using inverters or NAND gates.



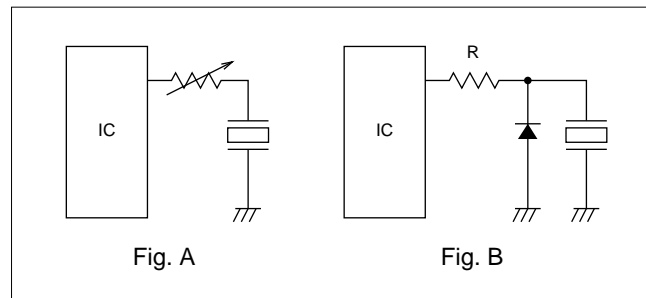
■ Notice (Soldering and Mounting)

Washing of the component is not acceptable, because it is not sealed.

■ Notice (Handling)

1. The component may be damaged if mechanical stress exceeding specifications is applied.
2. Take care to protect operating circuit from surge voltage resulting from excessive force, falling, shock or temperature change.
3. If DC voltage is applied to the component, silver migration may occur. Please pay full attention to avoid subjecting the component to DC voltage for long periods.
4. The resistor should be used as shown in Fig. A. A suitable resistance value should be chosen, preferably 1kΩ to 2kΩ. Instead of this measure, a diode may also be applied as shown in Fig. B.

5



5. Avoid excessive pulling of lead wire because wire may break or soldering point may come off.

Piezoelectric Sounders/Piezoelectric Buzzers/Piezoelectric Ringers (PIEZORINGER®)

(Part Number)

| | | | | | | | | | |
|----|---|----|---|---|----|----|----|---|-----|
| PK | M | 13 | E | P | YH | 40 | 00 | P | -A0 |
| 1 | 2 | 3 | 4 | 5 | 6 | 7 | 8 | 9 | 10 |

① Product ID

| Product ID | |
|------------|--------------------------------|
| PK | Piezoelectric Sound Components |

② Product

| Code | Product |
|------|-----------------|
| M | Sounder, Ringer |
| B | Buzzer |

③ Outer Dimensions

Expressed by two figures in mm.

Ex.)

| Code | Outer Dimensions |
|------|------------------|
| 13 | ø12.6mm |

④ Drive

| Code | Drive |
|------|----------------|
| E | External-Drive |
| S | Self-Drive |

⑤ Outer Electrode Style

| Code | Outer Electrode Style |
|------|-----------------------|
| P | Pin Type |
| W | Lead Wire Type |

⑥ Structure

| Code | Structure |
|------|--------------------------------|
| T□ | Standing Type |
| P□ | Flat Type Auto-assemble |
| Y□ | Flat Type/Available for Taping |
| C□ | Flat Type/Semi-auto-assemble |
| □ | Exclude above mentioned |

□ means specification of outer electrode.

SMD Piezoelectric Sounder

(Part Number)

| | | | | | | |
|----|-----|------|---|----|----|-----|
| PK | LCS | 1212 | E | 40 | 01 | -R1 |
| 1 | 2 | 3 | 4 | 5 | 6 | 7 |

① Product ID

| Product ID | |
|------------|--------------------------------|
| PK | Piezoelectric Sound Components |

② Product

| Code | Product |
|------|-------------|
| LCS | SMD Sounder |

③ Dimensions

| Code | Outer Dimensions |
|------|------------------|
| 1212 | □12mm |

④ Drive

| Code | Drive |
|------|----------------|
| E | External Drive |

⑦ Oscillating Frequency Type

| Code | Oscillating Frequency Type |
|------|--|
| 40 | Expressed resonant frequency by two-digit alphanumerics. The unit is in 100 hertz (Hz). In case of 4kHz (4000Hz), expressed as "40". |

⑧ Individual Specification Code

| Code | Individual Specification Code |
|------|---|
| 00 | Two digits express custom specification in characteristics. |

⑨ Special Quality Guarantee

| Code | Special Quality Guarantee |
|------|---------------------------|
| P | Post Plated Terminal |
| - | Blank |

⑩ Packaging

| Code | Packaging |
|------|---------------|
| -B0 | Bulk |
| -A0 | Radial Taping |
| -M0 | Magazine |

Radial taping or magazines are not available for all types. Please contact us.

Packaging Code is blank in the case of types for which radial taping or magazines are not available.

⑤ Oscillating Frequency Type

| Code | Oscillating Frequency Type |
|------|--|
| 40 | Expressed resonant frequency by two-digit alphanumerics. The unit is in 100 hertz (Hz). In case of 4kHz (4000Hz), expressed as "40". |

⑥ Individual Specification Code

| Code | Individual Specification Code |
|------|---|
| 01 | Two digits express specific specification in characteristics. |

⑦ Packaging

| Code | Packaging |
|------|----------------|
| -R1 | Plastic taping |

X-ON Electronics

Largest Supplier of Electrical and Electronic Components

Click to view similar products for [Piezo Buzzers & Audio Indicators](#) category:

Click to view products by [Murata](#) manufacturer:

Other Similar products are found below :

[6-4](#) [68S1240-PA](#) [MBA-624](#) [FDG06PSLLF](#) [FDG111PLF](#) [F/NRMB 24 BLACK LF](#) [PF-35N29WQ](#) [PFD-21A29W](#) [PFD-27A35PQ](#) [PL-21N30WQ](#) [PL-27A35PSQ](#) [PLD-21N30W](#) [PLD-21N30WQ](#) [PS-531Q](#) [PT-3534FP](#) [EBPT-401](#) [B822B](#) [PB-1220PEQ](#) [S6109](#) [SBM616PR](#) [SC110E](#) [SC2036ACP](#) [SC616N-2](#) [SC628FW](#) [SC628MPG](#) [SC648D](#) [SCS045MD9DT3S](#) [FCM12PLF](#) [F/EB20P-DR LF](#) [F/SMD03A LF](#) [FSMD8585JSLF](#) [F/SU 21-02 LF](#) [F/TCW 12 WITH LABEL LF](#) [F/UCW 06 WITH LABEL LF](#) [PFD-27N36W](#) [PKM22EPPH40S1-B0](#) [PKM35-4A0](#) [PL-35N29WQ](#) [PS-552Q](#) [CM-5](#) [REF-202](#) [B/SE 128 RED LF](#) [KBS-20DA-7AS](#) [KBS-27DA-5C-105](#) [LSC628ANR](#) [03-810.001](#) [RTO-1R07-001](#) [PL-21N31PQ](#) [B/CP 28B BLACK LF](#) [F/DGX 05P WITH LABEL LF](#)