

PWR70 SERIES

3 WATTS

UNREGULATED

OBSOLETE PRODUCT
Contact factory for replacement model

FEATURES

- I TESTED IN COMPLIANCE WITH UL544
- I OUTPUT POWER TO 3W
- I HIGH ISOLATION VOLTAGE: 2000VDC
- I SIX-SIDED SHIELDING
- I INPUT AND OUTPUT FILTERING
- I LOW PROFILE PACKAGE: 0.4" High

APPLICATIONS

- I POWER FOR DATA ACQUISITION, OP AMPS, ETC.
- I PROCESS CONTROL
- I PORTABLE EQUIPMENT
- I TEST EQUIPMENT

DESCRIPTION

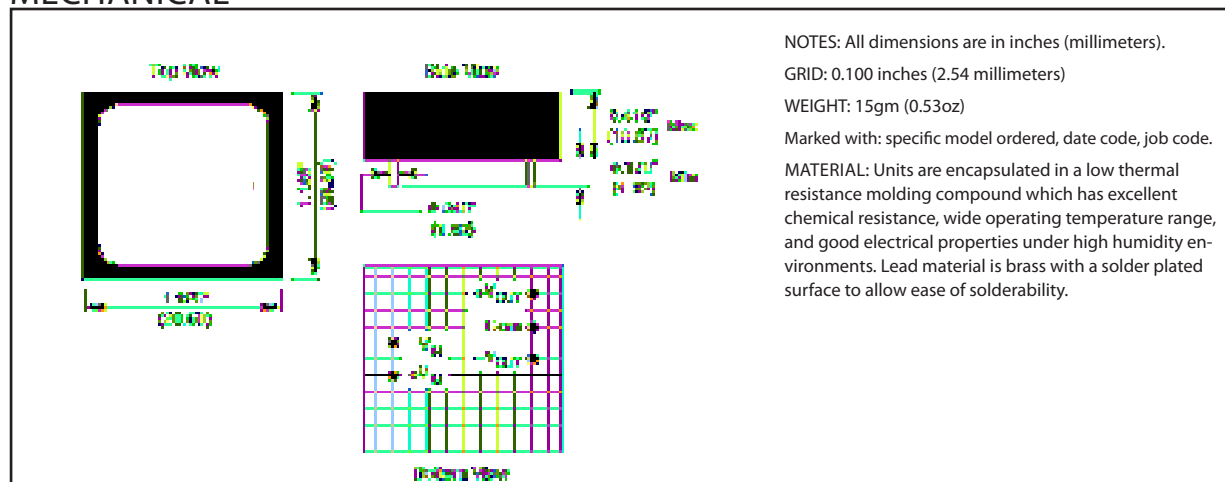
The PWR70 is a dual-output DC/DC converter designed for general purpose power conversion applications where high efficiency is more important than load regulation.

The PWR70 provides a plus and minus output voltage approximately equal to the input voltage magnitude. It operates over an input voltage range of 10VDC to 18VDC. Isolation voltage is a minimum of 2000VDC.

Six-sided shielding suppresses electromagnetic radiation which could disturb sensitive analog measurements or interfere with system timing signals. Input filtering minimizes reflected ripple current. Output ripple voltage and switching transients are reduced by filtering the PWR70 outputs.

The PWR70 is tested in compliance with UL544, VDE750, and CSA C22.2 dielectric withstand voltage requirements.

MECHANICAL



ELECTRICAL SPECIFICATIONS

At $T_a = +25^\circ\text{C}$, $V_{IN} = 15\text{VDC}$, and $I_{OUT} = \pm 15\text{mA}$ unless otherwise noted.

PARAMETER	CONDITIONS	MIN	TYP	MAX	UNITS
INPUT					
Rated Voltage			15		VDC
Voltage Range		10		18	VDC
Input Current	$I_{OUT} = \pm 3\text{mA}$ $I_{OUT} = \pm 33\text{mA}$		25	150	mA
Ripple Current	$I_{OUT} = \pm 33\text{mA}$		10		mVp-p
ISOLATION					
Rated Voltage		2000			VDC
Test Voltage	60s, 60Hz	5000			Vpk
Resistance			10		GΩ
Capacitance			12		pF
Leakage Current	$V_{ISO} = 240\text{VAC}, 60\text{Hz}$			2	μA
OUTPUT					
Rated Voltage			±15		VDC
Voltage Accuracy				±5	%
Rated Current			±15		mA
Current Range		0		±100	mA
Line Regulation	$10\text{VDC} \leq V_{IN} \leq 18\text{VDC}$		1.08		V/V
Load Regulation	$\pm 3\text{mA} \leq I_{OUT} \leq \pm 33\text{mA}$		35		mV/mA
Ripple Voltage	$I_{OUT} = \pm 3\text{mA}$ $I_{OUT} = \pm 33\text{mA}$		10	80	mVp-p
TEMPERATURE					
Specification		-25		+85	°C
Operating		-55		+125	°C

ABSOLUTE MAXIMUM RATINGS

Input Voltage.....18VDC
Output Current.....±150mA
Output Short-Circuit Duration.....Continuous

ORDERING INFORMATION

Device Family _____ PWR 70 /H
PWR indicates DC/DC converter
Model Number _____
Reliability Screening _____
No designator indicates standard manufacturing processing

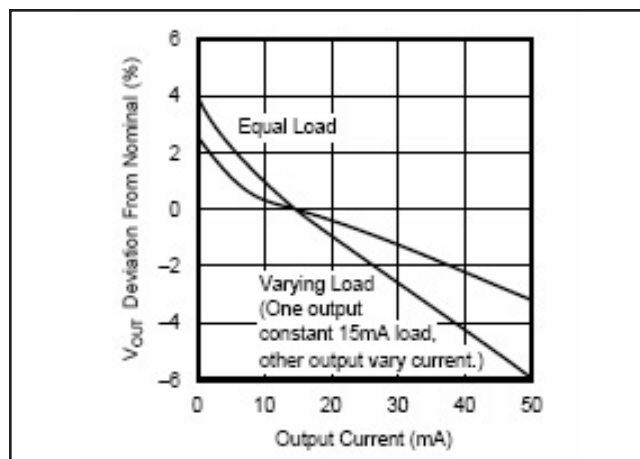


FIGURE 1. Load Regulation.

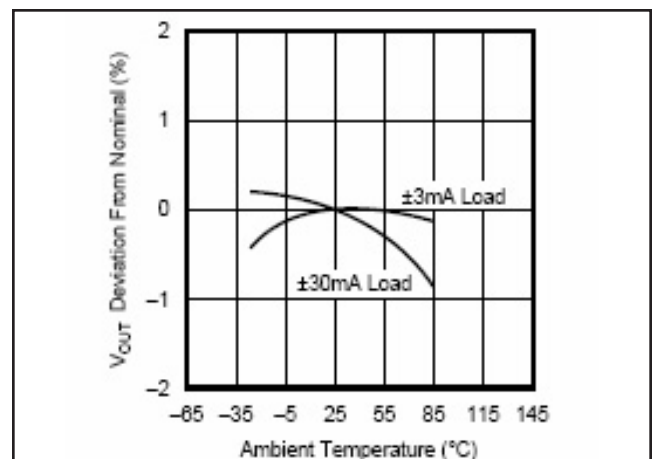


FIGURE 2. Temperature Drift.



Murata Power Solutions, Inc.

11 Cabot Boulevard, Mansfield, MA 02048-1151 U.S.A.

Tel: (508) 339-3000 (800) 233-2765 Fax: (508) 339-6356

www.murata-ps.com email: sales@murata-ps.com ISO 9001 & ISO 14001 REGISTERED

Murata Power Solutions, Inc. makes no representation that the use of its products in the circuits described herein, or the use of other technical information contained herein, will not infringe upon existing or future patent rights. The descriptions contained herein do not imply the granting of licenses to make, use, or sell equipment constructed in accordance therewith. Specifications are subject to change without notice. © 2009 Murata Power Solutions, Inc.

USA: Mansfield (MA), Tel: (508) 339 3000, email: sales@murata-ps.com

Canada: Toronto, Tel: (866) 740 1232, email: toronto@murata-ps.com

UK: Milton Keynes, Tel: +44 (0)1908 615232, email: mk@murata-ps.com

France: Montigny Le Bretonneux, Tel: +33 (0)1 34 60 01 01, email: france@murata-ps.com

Germany: München, Tel: +49 (0)89-544334-0, email: ped.munich@murata-ps.com

Japan: Tokyo, Tel: 3-3779-1031, email: sales_tokyo@murata-ps.com

Osaka, Tel: 6-6354-2025, email: sales_osaka@murata-ps.com

China: Shanghai, Tel: +86 215 027 3678, email: shanghai@murata-ps.com

Guangzhou, Tel: +86 208 221 8066, email: guangzhou@murata-ps.com

Singapore: Parkway Centre, Tel: +65 6348 9096, email: singapore@murata-ps.com

X-ON Electronics

Largest Supplier of Electrical and Electronic Components

Click to view similar products for [Isolated DC/DC Converters](#) category:

Click to view products by [Murata](#) manufacturer:

Other Similar products are found below :

[ESM6D044440C05AAQ](#) [FMD15.24G](#) [PSL486-7LR](#) [Q48T30020-NBB0](#) [JAHW100Y1](#) [SPB05C-12](#) [SQ24S15033-PS0S](#) [19-130041](#) [CE-1003](#)
[CE-1004](#) [GQ2541-7R](#) [RDS180245](#) [MAU228](#) [DFC15U48D15](#) [XGS-0512](#) [XGS-1205](#) [XGS-1212](#) [XGS-2412](#) [XGS-2415](#) [XKS-1215](#) [06322](#)
[NCT1000N040R050B](#) [SPB05B-15](#) [SPB05C-15](#) [L-DA20](#) [DCG40-5G](#) [QME48T40033-PGB0](#) [XKS-2415](#) [XKS-2412](#) [XKS-2405](#) [XKS-1212](#)
[XKS-1205](#) [XKS-0515](#) [XKS-0505](#) [XGS-2405](#) [XGS-1215](#) [XGS-0515](#) [PS9Z-6RM4](#) [73-551-5038I](#) [AK1601-9RT](#) [VI-R5022-EXWW](#) [PSC128-](#)
[7iR](#) [RPS8-350ATX-XE](#) [DAS1004812](#) [VI-LJ11-iz](#) [PQA30-D24-S24-DH](#) [VI-M5F-CQ](#) [VI-LN2-EW](#) [VI-PJW01-CZY](#) [CK2540-9ERT](#)